



# 21<sup>ST</sup> ANNUAL Poll Hereford Production Sale

18th February, 2019 at 1.30pm • Bordertown, South Australia

**ALLENDALE**  
POLL HEREFORD - SUFFOLK - POLL DORSET - WHITE SUFFOLK

*"Red Meat Specialists"*

**DAYS**  
WHITEFACE  
Poll Herefords | White Suffolks  
Maternal Composites



*Industry Leading Whiteface Genetics*



[www.allendalestuds.com.au](http://www.allendalestuds.com.au) | [www.dayswhiteface.com.au](http://www.dayswhiteface.com.au)



## SELLING AGENTS



Ross Milne	Hamilton	0408 057 558
Tom Dennis	Naracoorte	0427 975 207
Tom Penna	Adelaide	0428 854 708
Chris Howie	Adelaide	0408 842 331
Tony Wetherall	Adelaide	0427 390 001
Andy McGeoch	Orange	0418 737 470
Paul Jameson	Dubbo	0428 667 998



Gordon Wood	Strathalbyn	0408 813 215
Graeme Hampel	Bordertown	0408 838 292
Trevor Driver	Adelaide	0428 241 049
Richard Miller	Naracoorte	0428 849 327
Peter Godbolt	Albury	0457 591 929
John Setttee	Dubbo	0408 297 368
Andrew Sloan	Melbourne	0428 522 204

## **4% REBATE TO OUTSIDE AGENTS**

Conditions apply – see page 2.

---

The vendors and or their agents do not give any warranty as to errors or omissions, if any, in these particulars which they believe to be accurate when compiled.

Prospective purchasers should satisfy themselves by inspection or otherwise as to the accuracy of the particulars.

---



*Industry Leading Whiteface Genetics*

*“Red Meat Specialists”*

---

# 90 PERFORMANCE RECORDED BULLS

**OFFERED BY:**

**DAYS WHITEFACE**

**CONTACT**

**Lachlan Day - Phone 08 8752 1630**

**Mobile 0428 521 630 | Email [lday@dayswhiteface.com.au](mailto:lday@dayswhiteface.com.au)**

or **Graham Day** on 08 8752 2554

**ALLENDALE**

**CONTACT**

**Alastair Day**

**Mobile 0429 782 711 | Email [allendale@allendalestuds.com](mailto:allendale@allendalestuds.com)**

or **Graham Day** on 08 8752 2554

**SALE VENUE: Days Whiteface – 868 Naracoorte Rd, Bordertown.**

---

# Buyers Information

## Inspection

All cattle will be available for inspection from 11.00am on the morning of the Sale, however inspection can be arranged before hand by appointment.

## Luncheon

Will be available on the property.

## Delivery

While every care will be taken, no responsibility can be accepted whilst awaiting delivery.

## Transfers

Please indicate on the Buyers Instruction Slip if a transfer is required.

## Health

All cattle are officially government confirmed as TB free and Brucellosis free. The properties have a J-Bas 6 status for Bovine Johnes disease. All sale cattle treated with 7 in 1 (booster due Autumn 2019). All sale cattle treated with Dectomax, January 2019. All sale bulls ear notch tested as NOT persistently infected with the BVDV virus. All bulls have been vaccinated with Pestiguard and Vibrovax.

## Interstate Purchasers

The Vendor agrees to hold any stock for interstate buyers until any necessary tests have been completed. Expenses incurred payable by the Purchasers. Should any cattle react, the sale will be cancelled.

## Accommodation and Transport

The Auctioneers or vendors will be pleased to arrange accommodation in Adelaide or Bordertown.

## Buying Orders

The Auctioneer's Stud Stock staff are well acquainted with the herd. Buying orders will be diligently executed by officers experienced in stud beef cattle practice.

## Insurance

Can be arranged for transit and/or periods up to twelve (12) months cover.

## Rebate

A rebate of four percent (4%) will be paid to outside agents in attendance. A rebate of one percent (1%) will be paid to outside agents not in attendance but introducing client in writing prior to the sale.

## BUYER'S INSTRUCTION SLIP - see Page 76

AVERAGE EBVS FOR 2017 BORN CALVES								\$ INDEX VALUE	
CE DIR	CE DTRS	GL	BWT	200W	400W	600W	MCW	SUP MKT	+\$88
+1.1	+1.2	-0.3	+4.4	+33	+54	+77	+67	GRASS FED	+\$83
MILK	SS	CWT	EMA	RIB	RUMP	RBY%	IMF%	GRAIN FED	+\$96
+16	+2.0	+50	+3.3	+0.5	+0.6	+0.8	+0.4	EU	+\$98



## ***Can't make the sale?***

***Register in just seven easy steps and log onto AuctionsPlus to bid from anywhere on your phone, tablet or desktop.***

**1**

### **REGISTER ONLINE**

FREE once off registration for all auctions.

**2**

### **VIEW CATALOGUE**

Stock history, photos, videos, pedigrees and more .

**3**

### **LIMIT BID**

Can't make the auction? Set your maximum bid prior to auction and let the system bid for you.

**4**

### **ENTER AUCTION**

Log into the auction anytime, anywhere and bid on your mobile, tablet or computer.

**5**

### **CONTACT SELLER**

Contact selling agent to arrange payment and delivery.

**6**

### **PAYMENT**

Via the selling agent's terms and conditions.

**7**

### **DELIVERY**

Arrange transport of livestock at your expense.

***Contact AuctionsPlus on (02) 9262 4222  
www.auctionsplus.com.au***

# Breedplan Explanation

**EBV's are provided for the following traits:**

<b>CE DIR</b>	Calving Ease Direct. Indicates how this animal influences the birth of its progeny. Positive EBV's indicate easier calving.
<b>CE DTRS</b>	Calving Ease Daughters. Indicates how well the animal produces daughters that have easier calving.
<b>GL</b>	Lower Gestation Length EBV's indicate easier calving and increased growth after birth.
<b>SS</b>	Scrotal size is an indicator of male fertility in regards to semen quality and quantity. SS is also positively associated with female fertility.
<b>Birth Weight</b>	The lower the birthweight EBV, the lighter is the birthweight potential of the progeny.
<b>Genetic Milk</b>	Reflects extra calf weight at weaning due to the genetic influence a sire has on his daughters milking and mothering ability.
<b>200 Day Weight</b>	Indicates the relative weight advantage of a sire at 8-10 months of age.
<b>400 Day Weight</b>	Indicates the relative weight advantage of a sire at yearling age.
<b>600 Day Weight</b>	The best single estimate of an animals genetic merit for growth beyond yearling age.
<b>MWT</b>	Mature Cow Weight is an estimate of the genetic difference in cow weight at 5 years of age.
<b>CWT</b>	Estimates the genetic difference in carcass weight and is adjusted to 650 days of age.
<b>Fat Depth</b>	Bulls with negative (-) EBV's for this trait are expected to produce relatively leaner progeny than bulls with positive (+) EBV's.
<b>EMA</b>	Bulls with positive (+) EBV's for this trait are expected to produce more muscular progeny than bulls with negative (-) EBV's.
<b>Retail Beef Yield</b>	Bulls with larger EBV's are expected to produce progeny with higher yielding carcasses.
<b>Intramuscular Fat %</b>	Positive EBV's indicate likelihood of more intramuscular fat.
<b>Accuracies</b>	The accuracy provides a measure of the reliability of the EBV. The higher the value, the less likelihood of the EBV changing with the addition of more performance records on the animal.
<b>Selection Indexes</b>	An index ranks an animal for single production goal - profit. They take the hard work out of knowing how much emphasis to give each of the available growth, maternal, carcass and fertility EBV's when selecting parent animals. An index is a composite EBV of traits best suited to a particular production system and target market.
<b>Supermarket Index</b>	Targeting the domestic supermarket trade. Steers are either finished on grass or grain (eg 50-70 days). Steers are assumed marketed at 500kg live weight (270kg HSCW and 12mm P8 fat depth) at 17 months of age. Daughters are retained for breeding. Emphasis has been placed on eating quality and tenderness to favour animals that are suited to MSA requirements.
<b>Grass Fed</b>	Targeting pastured finished steers. Steers are assumed marketed at 600kg live weight (330kg HSCW and 8mm P8 fat depth) at 23 months of age. Daughters are retained for breeding. Emphasis has been placed on eating quality and tenderness to favour animals that are suited to MSA requirements.
<b>Grain Fed</b>	Targeting pastured grown steers with a 125 day feedlot finishing period for the grain fed markets. Steers are assumed marketed at 600kg live weight (330kg HSCW and 20mm P8 fat) at 20 months of age. Daughters are retained for breeding. There is a significant premium if steers reach a marble score of 2 or greater.
<b>EU Index</b>	Targeting pastured or grain finished steers for the EU market. Steers are assumed marketed at 600kg live weight (320kg HSCW and 20mm P8 fat depth) at 20 months of age. Daughters are retained for breeding. Emphasis has been placed on eating quality and tenderness to favour animals that are suited to MSA requirements.

# Reference Sire



## R LEADER 6964 (IMP USA) (PP)

**OSAP43500058**

**BIRTH DATE - 05/01/2014**

SCHU-LAR 5N OF 9L 3008 (IMP USA) (P)  
 SCHU-LAR ON TARGET 22S (IMP USA) (ET) (P)  
 SCHU-LAR 208 OF 1H 121 ET (P)

FELTONS LEGEND 242 (IMP USA) (P)  
 MSU TCF REVOLUTION 4R (IMP USA) (PP)  
 MSU TCF RACHAEL ET 54N (P)

**SIRE - HYALITE ON TARGET 936 (P)**

**DAM - R MISS REVOLUTION 1009 (P)**

KT TOP SECRET 1030 (P)  
 HYALITE TS LASS 310 (P)  
 HYALITE 215F LASS 812 (P)

JDF 16D WRANGLER 15 (P)  
 R MISS WRANGLER 3007 (P)  
 R MISS LASS 1741 (H#)

DECEMBER 2018 GROUP BREEDPLAN EBVS							
CE DIR	CE DTRS	GL	BWT	200W	400W	600W	MCW
<b>+5.9</b>	<b>+2.9</b>	<b>+2.1</b>	<b>+1.9</b>	<b>+46</b>	<b>+70</b>	<b>+87</b>	<b>+66</b>
70%	40%	94%	95%	92%	92%	90%	75%
MILK	SS	CWT	EMA	RIB	RUMP	RBY%	IMP%
<b>+20</b>	<b>+4.2</b>	<b>+71</b>	<b>+5.7</b>	<b>+1.3</b>	<b>+0.9</b>	<b>+0.9</b>	<b>+0.3</b>
71%	89%	75%	68%	70%	74%	63%	72%

\$ INDEX VALUE	
SUP MKT	+\$131
GRASS FED	+\$128
GRAIN FED	+\$143
EU	+\$146

Leader our newest outcross sire has delivered what we were expecting from him. His calves are born easily, have impressive early growth and muscularity. His daughters will be outstanding cows I believe. He is a trait leader for birth weight, 200 and 400 day wt and scrotal size. He is also in top 5% for carcase wt, EMA, supermarket, grassfed and EU indexes. We have a retained son N102 and have 8 sons in the sale.

# Reference Sire



## DAYS EXECUTIVE K168 (PP)

**K168**

**BIRTH DATE - 17/07/2014**

ALLENDALE ROSEMOUNT 2 (AI) (P)  
 ALLENDALE VAGABOND A74 (AI) (P)  
 SUZELLE MARLINE U54 (AI) (ET) (P)

**SIRE – ALLENDALE WATERHOUSE D1 (PP)**

ALLENDALE LANDLORD 3 (AI) (P)  
 ALLENDALE MARLINE X185 (P)  
 ALLENDALE MARLINE U46 (AI) (P)

DEBARRY EDEN (PP)

ALLENDALE TIPPERARY D13 (AI) (ET) (P)  
 ALLENDALE FANCY U64 (AI) (P)

**DAM – DAYS SILVIA G13 (AI) (P)**

ALLENDALE NATIONAL W168 (PP)  
 DAYS SILVIA E30 (AI) (P)  
 ALLENDALE SILVIA B273 (P)

### DECEMBER 2018 GROUP BREEDPLAN EBVS

CE DIR	CE DTRS	GL	BWT	200W	400W	600W	MCW
<b>+3.5</b>	<b>+3.6</b>	<b>-4.2</b>	<b>+5.1</b>	<b>+44</b>	<b>+79</b>	<b>+108</b>	<b>+97</b>
65%	53%	83%	93%	87%	84%	87%	77%
MILK	SS	CWT	EMA	RIB	RUMP	RBV%	IMF%
<b>+23</b>	<b>+4.1</b>	<b>+72</b>	<b>+6.8</b>	<b>-0.3</b>	<b>-0.3</b>	<b>+1.9</b>	<b>+0.9</b>
60%	88%	75%	67%	70%	74%	68%	71%

### \$ INDEX VALUE

SUP MKT	+\$136
GRASS FED	+\$130
GRAIN FED	+\$155
EU	+\$151

Executive was Reserve Champion Supermarket bull and Reserve Intermediate Champion at Dubbo selling for \$45,000 to Talbalba and Injermira. He is already a trait leader for gestation length, 200, 400 and 600 day wt and scrotal size. He is also in the top 1% for EMA, supermarket and EU indexes. Top 5% for milk and other indexes. He has 6 sons in the sale.



# Reference Sire



## ALLEDALE ANZAC K4 (ET) (PP)

**K4**

**BIRTH DATE - 12/02/2014**

ALLEDALE ROSEMOUNT 2 (AI) (P)  
 ALLEDALE VAGABOND A74 (AI) (P)  
 SUZELLE MARLINE U54 (AI) (ET) (P)

ALLEDALE KING KONG 2 (S)  
 ALLEDALE NATIONAL W168 (PP)  
 ALLEDALE CORA R22 (P)

**SIRE - ALLEDALE WATERHOUSE D1 (PP)**

**DAM - ALLEDALE DAWN B22 (AI) (ET) (P)**

ALLEDALE LANDLORD 3 (AI) (P)  
 ALLEDALE MARLINE X185 (P)  
 ALLEDALE MARLINE U46 (AI) (P)

VENA PARK SHARKA (H)  
 ALLEDALE DAWN T60 (AI) (P)  
 ALLEDALE DAWN N159 (AI) (P)

DECEMBER 2018 GROUP BREEDPLAN EBVS							
CE DIR	CE DTRS	GL	BWT	200W	400W	600W	MCW
<b>+5.3</b>	<b>+7.1</b>	<b>-1.1</b>	<b>+4.1</b>	<b>+36</b>	<b>+62</b>	<b>+82</b>	<b>+93</b>
74%	61%	89%	93%	87%	86%	88%	79%
MILK	SS	CWT	EMA	RIB	RUMP	RBV%	IMF%
<b>+21</b>	<b>+5.7</b>	<b>+54</b>	<b>+5.5</b>	<b>+0.5</b>	<b>+1.2</b>	<b>+0.7</b>	<b>+0.7</b>
65%	88%	77%	70%	72%	76%	70%	75%

\$ INDEX VALUE	
SUP MKT	+\$119
GRASS FED	+\$116
GRAIN FED	+\$132
EU	+\$135

Anzac K4 is a long, deep, strong headed bull that sold at Dubbo for \$40,000 to Glendan Park. His dam B22 has had 10 sons sell to average \$17,500. Top 1% SS. Top 5% EMA, EU Index. Top 10% Milk, Supermarket, Grassfed and Grainfed Indexes. Top 20% IMF. Anzac K4 has 6 sons in this sale.

# Reference Sire



## ALLENDALE CHISEL L3 (ET) (PP)

**L3**

**BIRTH DATE - 10/02/2015**

ALLENDALE VAGABOND A74 (AI) (P)  
 ALLENDALE WATERHOUSE D1 (PP)  
 ALLENDALE MARLINE X185 (P)

**SIRE – DAYS ROBIN HOOD H38 (AI) (ET) (PP)**

ALLENDALE KENWORTH 2 (P)  
 ALLENDALE FANCY U5 (AI) (P)  
 ALLENDALE FANCY 248 (AI) (P)

SOUTH BUKALONG SHAW 3 (P)  
 SOUTH BUKALONG SHANNON 40 (PP)  
 SOUTH BUKALONG PETAL 88 (P)

**DAM – ALLENDALE CORA D47 (AI) (P)**

ALLENDALE ROBIN HOOD (AI) (P)  
 ALLENDALE CORA B7 (AI) (P)  
 ALLENDALE CORA Y208 (P)

DECEMBER 2018 GROUP BREEDPLAN EBVS								\$ INDEX VALUE	
CE DIR	CE DTRS	GL	BWT	200W	400W	600W	MCW	SUP MKT	
<b>+3.3</b>	<b>+3.2</b>	<b>-3.4</b>	<b>+3.3</b>	<b>+37</b>	<b>+66</b>	<b>+86</b>	<b>+83</b>		+\$125
65%	50%	73%	88%	82%	81%	83%	75%	GRASS FED	+\$123
MILK	SS	CWT	EMA	RIB	RUMP	RBV%	IMF%	GRAIN FED	
<b>+13</b>	<b>+3.0</b>	<b>+61</b>	<b>+5.8</b>	<b>+1.6</b>	<b>+3.7</b>	<b>+0.4</b>	<b>+0.7</b>		+\$136
59%	81%	72%	60%	68%	71%	63%	70%	EU	+\$135

Chisel L3 is an early maturing, muscular bull with a strong head and an excellent eye set. His dam D47 has had 5 sons used in our stud. D47's sons at auction have sold to \$20,000 for Chisel L8 at Wodonga to Howquadale and 5 have averaged \$15,000. Top 1% Rump Fat. Top 5% GL, EMA, Rib fat, Supermarket, Grassfed and EU indexes. Top 10% 400 Day Wt, SS and Grainfed Index. Top 20% 200 Day Wt and IMF. Chisel L3 has 6 sons in this sale.

# Reference Sire



## WIRRUNA KATNOOK K74 (AI) (P)

**K74**

**BIRTH DATE - 10/08/2014**

NOOKEN VALERIAN 2 (AI) (ET) (P)  
 QUAMBY PLAINS STOCKMASTER Y118 (P)  
 QUAMBY PLAINS MAGPIE W9 (P)

**SIRE - WIRRUNA FLETCHER F214 (P)**

MOUNT DIFFICULT UNGAR (S)  
 WIRRUNA LAST DAY B16 (AI) (H#)  
 WIRRUNA LAST DAY Z152 (P)

MOUNT DIFFICULT FELLIS Y12 (AI) (P)  
 WIRRUNA DAFFY D1 (P)  
 MOUNT DIFFICULT LAST DAY A205 (P)

**DAM - WIRRUNA VICTORIA G7 (AI) (P)**

ALLENDALE NATIONAL W168 (PP)  
 WIRRUNA VICTORIA E112 (AI) (ET) (P)  
 SOUTH BUKALONG VICTORIA 202 (P)

DECEMBER 2018 GROUP BREEDPLAN EBVS							
CE DIR	CE DTRS	GL	BWT	200W	400W	600W	MCW
<b>-3.0</b>	<b>+1.1</b>	<b>-5.8</b>	<b>+6.6</b>	<b>+45</b>	<b>+66</b>	<b>+96</b>	<b>+74</b>
74%	54%	95%	95%	90%	90%	90%	80%
MILK	SS	CWT	EMA	RIB	RUMP	RBV%	IMF%
<b>+15</b>	<b>+3.1</b>	<b>+69</b>	<b>+7.9</b>	<b>+0.2</b>	<b>-0.9</b>	<b>+3.1</b>	<b>+1.9</b>
62%	90%	77%	69%	72%	77%	69%	76%

\$ INDEX VALUE	
SUP MKT	+\$126
GRASS FED	+\$123
GRAIN FED	+\$168
EU	+\$149

Katnook K74 is a well muscled, smooth skinned bull used by Days Whiteface and Allendale in 2016. Top 1% GL, EMA, IMF, RBV and Grained Index. Top 5% 200 Day Wt, SS, Supermarket, Grassfed and EU Indexes. Top 10% 400 and 600 Day Wt. Katnook has 10 sons in this sale.

# Strong History, Bright Future



- Professionalism • Commitment
- Network • Presentation

*Our passion for your business drives results.*

- **Gordon Wood** 0408 813 215 • **Leo Redden** 0408 806 021
- **Richard Miller** 0428 849 327

landmark.com.au

**LANDMARK**

2018/19/00193

**Acc. ALLEDALE**

**Lot 1 - ALLEDALE FCF DUBVEGAS N061 (PP)**

**N061**

**BIRTH DATE - 04/05/2017**

SHEF WONDER M326 W18 ET (P)  
 REMITALL-WEST GAME DAY ET 74Y (IMP CAN) (P)  
 REMITALL MARVEL 78T (IMP CAN) (P)  
**SIRE - ALLEDALE CHISEL L8 (ET) (S)**  
 SOUTH BUKALONG SHANNON 40 (PP)  
 ALLEDALE CORA D47 (AI) (P)  
 ALLEDALE CORA B7 (AI) (P)

MOUNT DIFFICULT FELLIS Y12 (AI) (P)  
 WIRRUNA ABERCORN (AI) (P)  
 WIRRUNA GOLDEN VANITY R94 (AI) (P)  
**DAM - ALLEDALE FANCY D207 (AI) (P)**  
 ALLEDALE KHATMANDU 2 (S)  
 ALLEDALE FANCY U66 (AI) (P)  
 ALLEDALE FANCY L70 (P)

DECEMBER 2018 GROUP BREEDPLAN EBVS							
CE DIR	CE DTRS	GL	BWT	200W	400W	600W	MCW
<b>-3.7</b>	<b>+1.3</b>	<b>-1.7</b>	<b>+5.9</b>	<b>+42</b>	<b>+71</b>	<b>+97</b>	<b>+84</b>
43%	35%	56%	72%	67%	67%	70%	62%
MILK	SS	CWT	EMA	RIB	RUMP	RBY%	IMF%
<b>+18</b>	<b>+3.7</b>	<b>+64</b>	<b>+5.1</b>	<b>+1.1</b>	<b>+1.6</b>	<b>+1.1</b>	<b>+0.2</b>
49%	76%	57%	48%	53%	57%	50%	51%

\$ INDEX VALUE	
SUP MKT	+\$113
GRASS FED	+\$107
GRAIN FED	+\$119
EU	+\$123

A well balanced, strong topped bull with Stud potential. Chisel L8 sold at Wodonga for \$20,000 to Howquadaale. Top 5% 200 & 400 Day Wt and Scrotal Size. Top 10% 600 Day Wt, Carcase Wt, EMA and Supermarket Index. Top 15% Rib & Rump fat, Grass fed and EU Indexes. Top 20% Grainfed Index. Pigment 100/100. HOMOZYGOUS POLL.

PURCHASER:..... \$.....



**LOT 1**

# ALLENDALE / DAYS WHITEFACE 2019

## Acc. ALLENDALE

### Lot 2 - ALLENDALE INJUNE N028 (AI) (PP)

**N028**

**BIRTH DATE - 22/04/2017**

QUAMBY PLAINS STOCKMASTER Y118 (P)  
 WIRRUNA FLETCHER F214 (P)  
 WIRRUNA LAST DAY B16 (AI) (H#)

ALLENDALE WATERHOUSE D1 (PP)  
 DAYS ROBIN HOOD H38 (AI) (ET) (PP)  
 ALLENDALE FANCY U5 (AI) (P)

**SIRE - WIRRUNA KATNOOK K74 (AI) (P)**  
 WIRRUNA DAFFY D1 (P)  
 WIRRUNA VICTORIA G7 (AI) (P)  
 WIRRUNA VICTORIA E112 (AI) (ET) (P)

**DAM - ALLENDALE FANCY L15 (AI) (P)**  
 ALLENDALE ANZAC E114 (PP)  
 ALLENDALE FANCY H25 (AI) (PP)  
 ALLENDALE FANCY B115 (P)

DECEMBER 2018 GROUP BREEDPLAN EBVS							
CE DIR	CE DTRS	GL	BWT	200W	400W	600W	MCW
<b>-5.7</b>	<b>-0.3</b>	<b>-4.5</b>	<b>+5.9</b>	<b>+40</b>	<b>+63</b>	<b>+85</b>	<b>+83</b>
47%	36%	74%	73%	68%	68%	71%	64%
MILK	SS	CWT	EMA	RIB	RUMP	RBV%	IMF%
<b>+11</b>	<b>+2.1</b>	<b>+60</b>	<b>+8.2</b>	<b>+0.9</b>	<b>+1.5</b>	<b>+2.1</b>	<b>+1.4</b>
47%	77%	59%	51%	54%	58%	52%	54%

\$ INDEX VALUE	
SUP MKT	+\$102
GRASS FED	+\$100
GRAIN FED	+\$125
EU	+\$117

A well muscled, correct heifer's first calf. Granddam H25 is a Donor and a full sister to 2 bulls used in our stud - Chinchilla J23 sold to Glen Bowman and Chinchilla K65 sold to Coryule Pastoral. With this bull being Homozygous polled, with an EMA of +8.2 and IMF of +1.4 he is worthy of stud inspection. Top 1% EMA. Top 5% Gestation length, RBV and IMF. Top 10% 200 Day Wt. Top 15% 400 Day Wt, Carcase Wt, Rump Fat and Grain Fed Index. Top 20% Supermarket, Grass Fed and EU Indexes. Pigment 100/100. HOMOZYGOUS POLL.

PURCHASER:..... \$.....



**Acc. ALLENDALE**

**Lot 3 - ALLENDALE INDUSTRY N042 (AI) (P)**

**N042**

**BIRTH DATE - 27/04/2017**

QUAMBY PLAINS STOCKMASTER Y118 (P)  
 WIRRUNA FLETCHER F214 (P)  
 WIRRUNA LAST DAY B16 (AI) (H#)  
**SIRE - WIRRUNA KATNOOK K74 (AI) (P)**  
 WIRRUNA DAFFY D1 (P)  
 WIRRUNA VICTORIA G7 (AI) (P)  
 WIRRUNA VICTORIA E112 (AI) (ET) (P)

ALLENDALE NATIONAL W168 (PP)  
 ALLENDALE ZEPPELIN (AI) (S)  
 ALLENDALE FANCY Z247 (P)  
**DAM - ALLENDALE FANCY G95 (ET) (P)**  
 ALLENDALE LANDLORD 3 (AI) (P)  
 ALLENDALE FANCY Y19 (AI) (P)  
 ALLENDALE FANCY U84 (AI) (P)

DECEMBER 2018 GROUP BREEDPLAN EBVS							
CE DIR	CE DTRS	GL	BWT	200W	400W	600W	MCW
<b>+0.1</b>	<b>+0.6</b>	<b>-5.2</b>	<b>+4.3</b>	<b>+38</b>	<b>+58</b>	<b>+83</b>	<b>+72</b>
45%	35%	75%	73%	66%	65%	66%	59%
MILK	SS	CWT	EMA	RIB	RUMP	RBV%	IMF%
<b>+15</b>	<b>+2.5</b>	<b>+62</b>	<b>+5.9</b>	<b>+0.2</b>	<b>-0.3</b>	<b>+1.9</b>	<b>+1.0</b>
48%	64%	54%	43%	52%	56%	48%	53%

\$ INDEX VALUE	
SUP MKT	+\$106
GRASS FED	+\$104
GRAIN FED	+\$128
EU	+\$123

Sirey headed, deep bodied bull with muscle. Top 1% – GL. Top 5% EMA and RBV. Top 10% Carcase Wt and IMF. Top 15% Supermarket, Grainfed and EU Indexes. Top 20% Grassfed Index. Pigment 100/100.

PURCHASER:..... \$.....



# ALLENDALE / DAYS WHITEFACE 2019

## Acc. ALLENDALE

### Lot 4 - ALLENDALE GOODWOOD N067 (PP)

**N067**

**BIRTH DATE - 06/05/2017**

ALLENDALE YACKA (AI) (P)  
 ALLENDALE ANZAC E114 (PP)  
 ALLENDALE DAWN B22 (AI) (ET) (P)

ALLENDALE WATERHOUSE D1 (PP)  
 ALLENDALE WASHINGTON G82 (ET) (P)  
 ALLENDALE FANCY Z59 (P)

**SIRE - ALLENDALE COLLINGWOOD J29 (AI) (PP)**  
 HEATHERDALE MAGNUM C97 (P)  
 ALLENDALE BLUE MIST E13 (P)  
 HEATHERDALE BLUE MIST C25 (AI) (P)

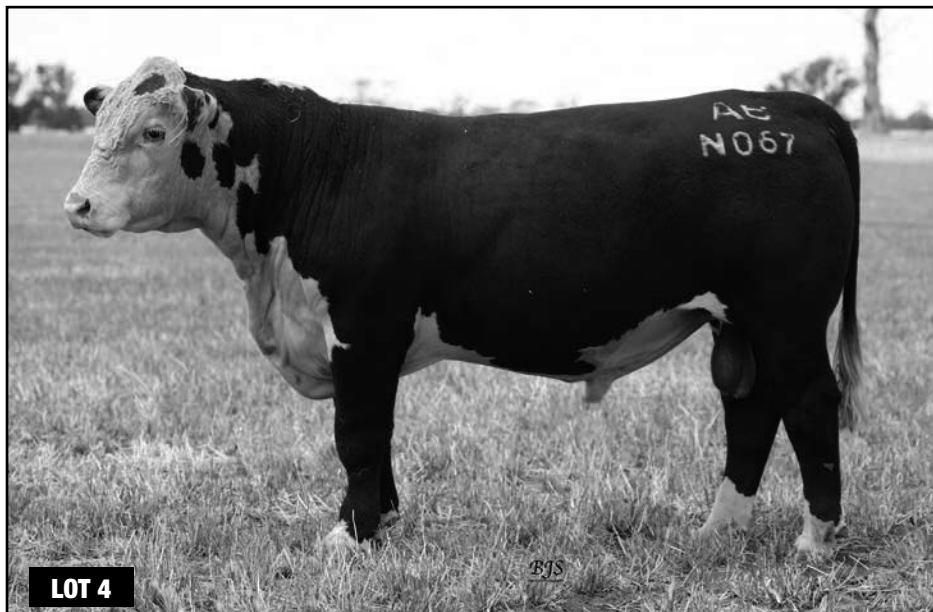
**DAM - ALLENDALE FANCY J1 (P)**  
 ALLENDALE YEMEN E39 (P)  
 ALLENDALE FANCY G6 (P)  
 ALLENDALE FANCY E2 (AI) (P)

DECEMBER 2018 GROUP BREEDPLAN EBVS							
CE DIR	CE DTRS	GL	BWT	200W	400W	600W	MCW
<b>-2.8</b>	<b>-0.2</b>	<b>-0.4</b>	<b>+6.0</b>	<b>+32</b>	<b>+55</b>	<b>+78</b>	<b>+59</b>
43%	34%	56%	72%	67%	67%	70%	63%
MILK	SS	CWT	EMA	RIB	RUMP	RBY%	IMF%
<b>+21</b>	<b>+3.8</b>	<b>+49</b>	<b>+6.5</b>	<b>+2.0</b>	<b>+3.1</b>	<b>-0.3</b>	<b>+2.2</b>
48%	77%	57%	48%	52%	57%	50%	51%

\$ INDEX VALUE	
SUP MKT	+\$109
GRASS FED	+\$109
GRAIN FED	+\$153
EU	+\$124

Muscular, well made bull with a good head and eye setting. This bull has some good females in his pedigree. With his fertility and carcass traits in the top 1% this bull is worth some consideration. Top 1% Scrotal Size, EMA, Rump fat and IMF Top 5% Rib Fat and Grainfed Index. Top 10% Milk, Grassfed and EU Indexes. Top 15% Supermarket Index. Pigment 80/75. HOMOZYGOUS POLL.

PURCHASER:..... \$.....





**Acc. ALLENDALE**

**Lot 5 - ALLENDALE INVERELL N109 (S)**

**N109**

**BIRTH DATE - 25/05/2017**

ALLEDALE WATERHOUSE D1 (PP)  
 DAYS ROBIN HOOD H38 (AI) (ET) (PP)  
 ALLENDALE FANCY U5 (AI) (P)

ALLEDALE SUPERSTAR B28 (AI) (ET) (S)  
 ALLENDALE YALLARO 2 (AI) (TW) (P)  
 ALLENDALE FANCY A181 (AI) (P)

**SIRE - ALLENDALE CHISEL L3 (ET) (PP)**  
 SOUTH BUKALONG SHANNON 40 (PP)  
 ALLENDALE CORA D47 (AI) (P)  
 ALLENDALE CORA B7 (AI) (P)

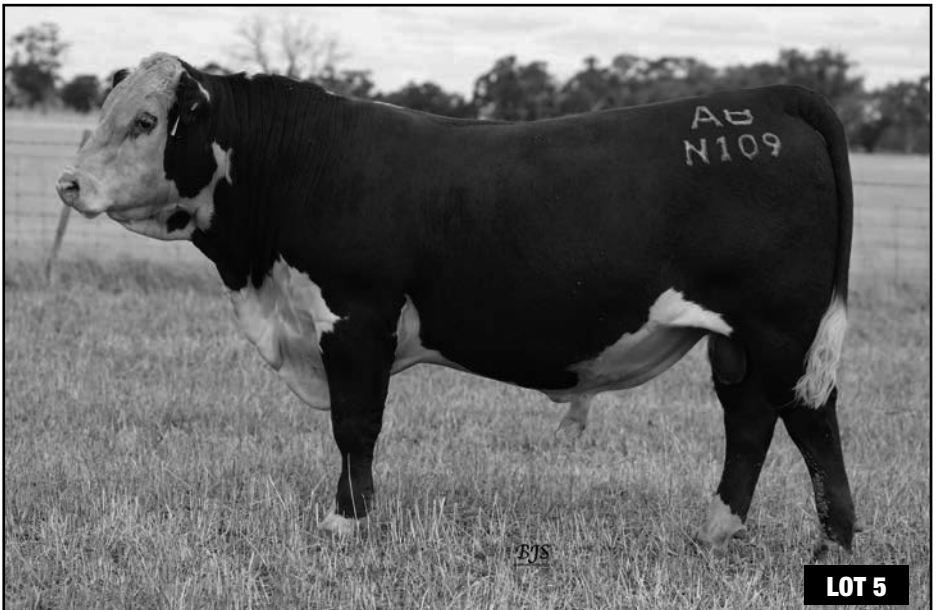
**DAM - ALLENDALE FANCY G108 (P)**  
 BRAXTON WESTWIND 120M (IMP NZL) (P)  
 ALLENDALE FANCY A158 (AI) (ET) (S)  
 ALLENDALE FANCY V190 (AI) (P)

DECEMBER 2018 GROUP BREEDPLAN EBVS							
CE DIR	CE DTRS	GL	BWT	200W	400W	600W	MCW
<b>-2.7</b>	<b>+2.1</b>	<b>-2.5</b>	<b>+5.1</b>	<b>+39</b>	<b>+61</b>	<b>+85</b>	<b>+83</b>
44%	35%	55%	73%	67%	67%	70%	63%
MILK	SS	CWT	EMA	RIB	RUMP	RBV%	IMF%
<b>+11</b>	<b>+1.5</b>	<b>+56</b>	<b>+4.4</b>	<b>+0.5</b>	<b>+1.3</b>	<b>+1.1</b>	<b>+0.7</b>
49%	76%	57%	48%	53%	57%	50%	51%

\$ INDEX VALUE	
SUP MKT	+\$97
GRASS FED	+\$93
GRAIN FED	+\$107
EU	+\$107

A deep bodied, strong bull very much like his grandsire Yallaro. Some good cows in this bull's pedigree including donors V190, A158 and D47. Top 10% Gestation Length. Top 15% 200 Day Weight and EMA. Top 20% 400 Day Wt and Rump Fat. Pigment 100/100.

PURCHASER:..... \$.....



**LOT 5**

# ALLEDALE / DAYS WHITEFACE 2019

## Acc. ALLENDALE

### Lot 6 - ALLENDALE INTERCEPT N037 (AI) (P)

**N037**

**BIRTH DATE - 25/04/2017**

WIRRUNA DAFFY D1 (P)  
 WIRRUNA GEELONG G171 (AI) (PP)  
 WIRRUNA LAST DAY E163 (AI) (P)  
**SIRE - ALLENDALE JI FREEWAY K28 (AI) (PP)**  
 ALLENDALE WATERHOUSE D1 (PP)  
 ABBERLEY MARLINE H10 (AI) (P)  
 ABBERLEY MARLINE E6 (AI) (P)

SHF WONDER M326 W18 ET (P)  
 REMITALL-WEST GAME DAY ET 74Y (IMP CAN) (P)  
 REMITALL MARVEL 78T (IMP CAN) (P)  
**DAM - ALLENDALE BLUE MIST L17 (AI) (H#)**  
 ALLENDALE ANZAC E114 (PP)  
 ALLENDALE BLUE MIST H9 (AI) (P)  
 ALLENDALE BLUE MIST E13 (P)

DECEMBER 2018 GROUP BREEDPLAN EBVS							
CE DIR	CE DTRS	GL	BWT	200W	400W	600W	MCW
<b>+8.9</b>	<b>+5.3</b>	<b>-0.9</b>	<b>+1.2</b>	<b>+31</b>	<b>+49</b>	<b>+68</b>	<b>+37</b>
42%	32%	73%	71%	65%	65%	64%	58%
MILK	SS	CWT	EMA	RIB	RUMP	RBY%	IMF%
<b>+20</b>	<b>+2.9</b>	<b>+59</b>	<b>+6.4</b>	<b>+2.4</b>	<b>+3.2</b>	<b>-0.1</b>	<b>+2.4</b>
44%	76%	53%	48%	52%	56%	50%	51%

\$ INDEX VALUE	
SUP MKT	+\$130
GRASS FED	+\$134
GRAIN FED	+\$179
EU	+\$147

A deep soft bull used on stud heifers. An old fashioned bull with new fashioned figures. Good line of females in this bull's pedigree. Dam is a donor, Granddam is a full sister to Collingwood J29 and a donor and E13 is a donor and dam of 8 bulls to \$20,000 to ave \$11,500. Retaining semen for within herd use only. Top 1% - Rib and Rump Fat, IMF, Grass Fed and Grain Fed Indexes. Top 5% EMA, Supermarket and EU Indexes. Top 10% Calving Ease, Birth Weight and SS. Top 15% Milk and Carcase Wt. Pigment 100/100.

PURCHASER:..... \$.....



**Acc. ALLENDALE**

**Lot 7 - ALLENDALE INSANE N035 (AI) (TW) (PP)**

**N035**

**BIRTH DATE - 24/04/2017**

ALLENDALE VAGABOND A74 (AI) (P)  
 ALLENDALE WATERHOUSE D1 (PP)  
 ALLENDALE MARLINE X185 (P)

ALLENDALE ADVANTAGE E14 (AI) (P)  
 ALLENDALE DIXY H107 (AI) (S)  
 ALLENDALE LAST DAY E10 (P)

**SIRE - ALLENDALE ANZAC K4 (ET) (PP)**

**DAM - ALLENDALE CORA K66 (P)**

ALLENDALE NATIONAL W168 (PP)  
 ALLENDALE DAWN B22 (AI) (ET) (P)  
 ALLENDALE DAWN T60 (AI) (P)

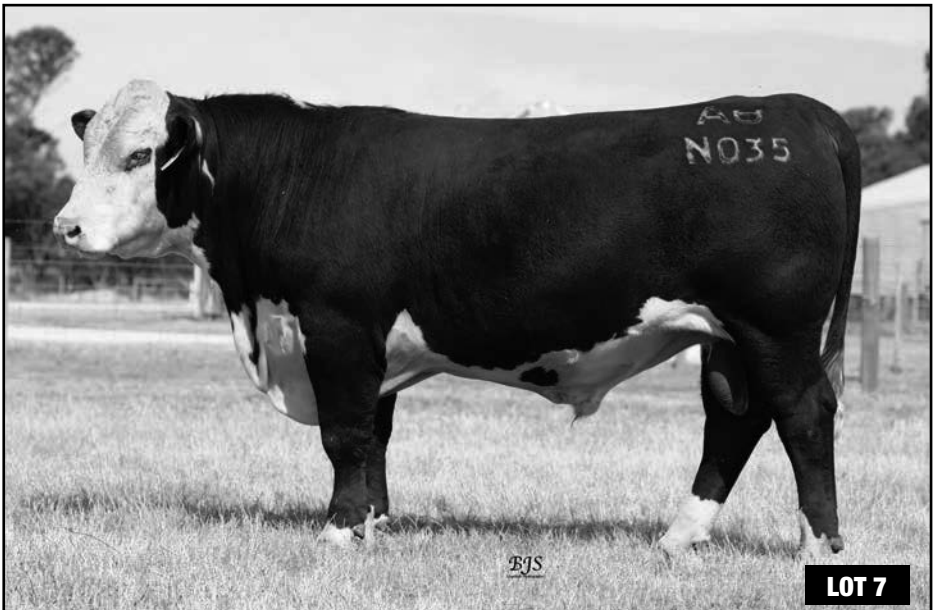
MERRINA A74 REACTOR E148 (P)  
 ALLENDALE CORA H76 (P)  
 ALLENDALE CORA C193 (P)

DECEMBER 2018 GROUP BREEDPLAN EBVS							
CE DIR	CE DTRS	GL	BWT	200W	400W	600W	MCW
<b>+5.7</b>	<b>+5.0</b>	<b>-0.4</b>	<b>+4.2</b>	<b>+31</b>	<b>+55</b>	<b>+74</b>	<b>+81</b>
44%	35%	58%	71%	66%	66%	66%	58%
MILK	SS	CWT	EMA	RIB	RUMP	RBV%	IMF%
<b>+21</b>	<b>+2.9</b>	<b>+49</b>	<b>+4.6</b>	<b>+0.3</b>	<b>+0.4</b>	<b>+0.7</b>	<b>+0.8</b>
47%	75%	55%	49%	53%	58%	51%	53%

\$ INDEX VALUE	
SUP MKT	+\$98
GRASS FED	+\$95
GRAIN FED	+\$111
EU	+\$111

Well balanced, smooth bull used on stud heifers. Anzac K4 purchased by Glendan Park stud for \$40,000. Top 10% SS. Top 15% EMA Top 20% Calving Ease and IMF. Pigment 100/100. HOMOZYGOUS POLL.

PURCHASER: ..... \$.....



# ALLEDALE / DAYS WHITEFACE 2019

## Acc. DAYS WHITEFACE

### Lot 8 - DAYS INFLUENTIAL N178 (PP)

N178

BIRTH DATE - 24/06/2017

TH 71U 719T MR HEREFORD 11X (IMP USA) (P)  
TH 70R 11X MR HEREFORD 34Z (IMP USA) (P)  
TH 172J 57G QUEEN MAKER 70R (P)

SIRE - DAYS GODFATHER L44 (AI) (S)

SOUTH BUKALONG WALLACE 2 (P)  
DAYS FANCY H31 (AI) (ET) (P)  
ALLEDALE FANCY A7 (AI) (ET) (P)

ALLEDALE VAGABOND A74 (AI) (P)  
ALLEDALE WATERHOUSE D1 (P)  
ALLEDALE MARLINE X185 (P)

DAM - DAYS FANCY K166 (P)

WIRRUNA ABERCORN (AI) (P)  
DAYS FANCY F7 (AI) (ET) (P)  
ALLEDALE FANCY U64 (AI) (P)

#### DECEMBER 2018 GROUP BREEDPLAN EBVS

CE DIR	CE DTRS	GL	BWT	200W	400W	600W	MCW
<b>+5.0</b>	<b>+3.0</b>	<b>-2</b>	<b>+4.2</b>	<b>+41</b>	<b>+68</b>	<b>+95</b>	<b>+72</b>
41%	35%	55%	70%	64%	64%	63%	57%
MILK	SS	CWT	EMA	RIB	RUMP	RBV%	IMF%
<b>+20</b>	<b>+5.0</b>	<b>+67</b>	<b>+5.3</b>	<b>+0.9</b>	<b>+1.8</b>	<b>+0.7</b>	<b>+0.8</b>
45%	75%	53%	48%	52%	56%	50%	50%

#### \$ INDEX VALUE

SUP MKT	+\$140
GRASS FED	+\$137
GRAIN FED	+\$162
EU	+\$155

Homozygous Polled. Long, strong topped athletic bull with sire appeal. Fancy U64 is dam of Tipperary D13 sire of lots 24-28. Top 5% scrotal size, Supermarket, Grassfed and EU indexes. Top 5% grainfed index. Top 10% for 200,400 and 600 day wt, carcass wt and EMA. Pigment 100/100.

PURCHASER: ..... \$ .....



**Acc. DAYS WHITEFACE**

**Lot 9 - DAYS INDIANAPOLIS N132 (PP)**

**N132**

**BIRTH DATE - 01/06/2017**

TH 71U 719T MR HEREFORD 11X (IMP USA) (P)  
 TH 70R 11X MR HEREFORD 34Z (IMP USA) (P)  
 TH 172J 57G QUEEN MAKER 70R (P)

PINE HILL CAVALIER C568 (AI) (P)  
 INJEMIRA CAVALIER G032 (P)  
 INJEMIRA LIONESS B038 (AI) (H#)

**SIRE - DAYS GUNPOWDER L13 (AI) (S)**

ALLENDALE WATERHOUSE D1 (PP)  
 DAYS DAWN J71 (P)  
 ALLENDALE DAWN D161 (P)

**DAM - DAYS MARLINE L80 (P)**

ALLENDALE SUPERSTAR B26 (AI) (ET) (P)  
 DAYS MARLINE H51 (P)  
 ALLENDALE MARLINE A177 (P)

DECEMBER 2018 GROUP BREEDPLAN EBVS							
CE DIR	CE DTRS	GL	BWT	200W	400W	600W	MCW
<b>+6.7</b>	<b>+3.1</b>	<b>-2.5</b>	<b>+4.2</b>	<b>+37</b>	<b>+68</b>	<b>+88</b>	<b>+79</b>
39%	28%	52%	70%	64%	64%	63%	57%
MILK	SS	CWT	EMA	RIB	RUMP	RBV%	IMF%
<b>+19</b>	<b>+2.7</b>	<b>+60</b>	<b>+4.9</b>	<b>+0.7</b>	<b>+0.9</b>	<b>+0.5</b>	<b>+0.9</b>
41%	75%	52%	47%	51%	56%	49%	49%

\$ INDEX VALUE	
SUP MKT	+\$116
GRASS FED	+\$113
GRAIN FED	+\$134
EU	+\$128

Homozygous Polled. Long, deep bodied, easy doing heifers first calf. Gunpowder L13 was used on heifers and sold to Mahwallok East. N132 is in top 10% for gestation length, EMA and all indexes. Pigment 100/100.

PURCHASER: ..... \$.....



**Acc. DAYS WHITEFACE**

**Lot 10 - DAYS HEADLINE N184 (TW) (P)**

**N184**

**BIRTH DATE - 26/06/2017**

TH 71U 719T MR HEREFORD 11X (IMP USA) (P)  
 TH 70R 11X MR HEREFORD 34Z (IMP USA) (P)  
 TH 172J 57G QUEEN MAKER 70R (P)

SOUTH BUKALONG WALLACE 2 (P)  
 DAYS PATRICK H37 (AI) (ET) (S)  
 ALLENDALE FANCY A7 (AI) (ET) (P)

**SIRE - DAYS GODFATHER L44 (AI) (S)**

SOUTH BUKALONG WALLACE 2 (P)  
 DAYS FANCY H31 (AI) (ET) (P)  
 ALLENDALE FANCY A7 (AI) (ET) (P)

**DAM - DAYS MOTH K120 (P)**

ALLENDALE WATERHOUSE D1 (PP)  
 DAYS MOTH H50 (P)  
 ALLENDALE MOTH C74 (AI) (P)

**DECEMBER 2018 GROUP BREEDPLAN EBVS**

CE DIR	CE DTRS	GL	BWT	200W	400W	600W	MCW
<b>-3.8</b>	<b>+0.8</b>	<b>-2.5</b>	<b>+7.7</b>	<b>+48</b>	<b>+79</b>	<b>+114</b>	<b>+99</b>
41%	33%	56%	70%	63%	63%	63%	57%
MILK	SS	CWT	EMA	RIB	RUMP	RBV%	IMF%
<b>+13</b>	<b>+3.4</b>	<b>+69</b>	<b>+4.2</b>	<b>+0.7</b>	<b>+0.9</b>	<b>+0.6</b>	<b>+1.6</b>
44%	70%	52%	45%	50%	54%	47%	50%

**\$ INDEX VALUE**

SUP MKT	+\$123
GRASS FED	+\$116
GRAIN FED	+\$151
EU	+\$134

Strong bull with an impressive topline. First son of K120 sold for \$8,000 to Peter Tischler last year. Top 1% 200, 400 and 600 day wt. Top 5% scrotal size, carcass wt, IMF. Top 5% Supermarket, grain fed and EU indexes. Top 10% gestation length and grainfed index. Pigment 100/100.

PURCHASER:..... \$.....



**Acc. DAYS WHITEFACE**

**Lot 11 - DAYS GODFATHER N022 (AI) (P)**

**N022**

**BIRTH DATE - 02/05/2017**

QUAMBY PLAINS STOCKMASTER Y118 (P)  
 WIRRUNA FLETCHER F214 (P)  
 WIRRUNA LAST DAY B16 (AI) (H#)

SOUTH BUKALONG WALKER 6 (AI) (P)  
 SOUTH BUKALONG WALLACE 2 (P)  
 SOUTH BUKALONG VICTORIA 152 (P)

**SIRE - WIRRUNA KATNOOK K74 (AI) (P)**  
 WIRRUNA DAFFY D1 (P)  
 WIRRUNA VICTORIA G7 (AI) (P)  
 WIRRUNA VICTORIA E112 (AI) (ET) (P)

**DAM - DAYS FANCY H31 (AI) (ET) (P)**  
 ALLENDALE NATIONAL W168 (PP)  
 ALLENDALE FANCY A7 (AI) (ET) (P)  
 ALLENDALE FANCY U5 (AI) (P)

DECEMBER 2018 GROUP BREEDPLAN EBVS							
CE DIR	CE DTRS	GL	BWT	200W	400W	600W	MCW
<b>+1.8</b>	<b>+3.4</b>	<b>-6.3</b>	<b>+4.9</b>	<b>+44</b>	<b>+65</b>	<b>+95</b>	<b>+67</b>
50%	40%	76%	73%	69%	69%	68%	62%
MILK	SS	CWT	EMA	RIB	RUMP	RBV%	IMF%
<b>+17</b>	<b>+3.2</b>	<b>+67</b>	<b>+6.5</b>	<b>+1.5</b>	<b>+1.7</b>	<b>+1.5</b>	<b>+2.5</b>
51%	78%	58%	53%	57%	60%	55%	57%

\$ INDEX VALUE	
SUP MKT	+\$142
GRASS FED	+\$142
GRAIN FED	+\$192
EU	+\$162

Heavy bodied, deep sided bull with a sires head. Outstanding pedigree and figures. He was used heavily on cows in 2018. His sire Katnook is a carcass bull being in the top 1% of the breed for EMA and IMF. Fancy H31 is a full sister to Patrick H37, EU class winner at Dubbo selling for \$27,000 to Quamby and Chester. She is also the dam of sire L44, who has 5 sons on offer and alsotots 24-28. Fancy U5 is dam of the Robin Hood bulls. N022 is in the top 1% for gestation length, IMF and all indexes. Top 5% for 200 day wt, scrotal size, carcass wt and EMA. Retaining semen for within herd use only. Pigment 100/100.

PURCHASER:..... \$.....



**LOT 11**

# ALLEDALE / DAYS WHITEFACE 2019

## Acc. DAYS WHITEFACE

Lot 12 - DAYS IMPERIOUS N034 (AI) (PP)

N034

BIRTH DATE - 05/05/2017

MELVILLE EXCEL E443 (P)  
DAYS ELABORATE J59 (AI) (P)  
DAYS CORA E38 (AI) (P)

SIRE - DAYS GLOBETROTTER L107 (P)

DAYS BEDFORD F14 (AI) (P)  
DAYS BLISSFUL J25 (AI) (P)  
DAYS BLISSFUL G111 (P)

REMITALL ACME 10A (P)

REMITALL EMBRACER 8E (IMP CAN) (P)  
PLAIN LAKE BELLE 20X 117P 5B (P)

DAM - DAYS DAWN L23 (AI) (P)

SOUTH BUKALONG SHANNON 40 (PP)  
ALLEDALE DAWN D70 (AI) (P)  
ALLEDALE DAWN A263 (P)

### DECEMBER 2018 GROUP BREEDPLAN EBVS

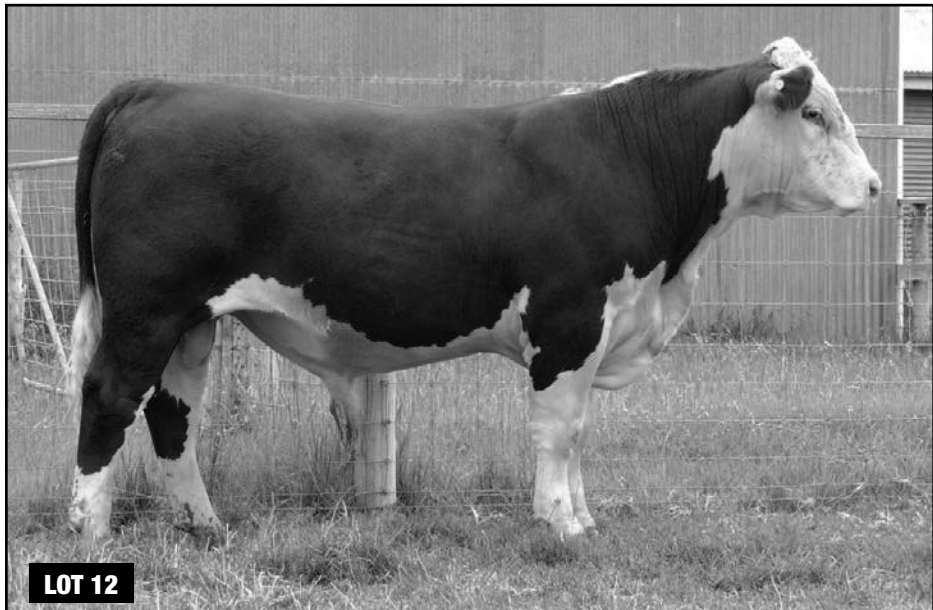
CE DIR	CE DTRS	GL	BWT	200W	400W	600W	MCW
<b>+10.3</b>	<b>+6.8</b>	<b>-4.2</b>	<b>+3.4</b>	<b>+38</b>	<b>+65</b>	<b>+85</b>	<b>+64</b>
38%	29%	72%	70%	64%	64%	62%	57%
MILK	SS	CWT	EMA	RIB	RUMP	RBY%	IMF%
<b>+22</b>	<b>+2.5</b>	<b>+62</b>	<b>+4.4</b>	<b>+0.3</b>	<b>+0.4</b>	<b>+1.6</b>	<b>-0.1</b>
41%	76%	51%	46%	49%	53%	47%	46%

### \$ INDEX VALUE

SUP MKT	+\$118
GRASS FED	+\$115
GRAIN FED	+\$123
EU	+\$130

Homozygous Polled. Long, well balanced, good structured bull with an outcross pedigree. Used on stud heifers in 2018. L107 Junior and Grand Champion Adelaide 2016. Top 5% calving ease, gestation length and milk. Top 10% supermarket, grassfed and EU indexes. Pigment 100/100.

PURCHASER:..... \$.....





**Acc. DAYS WHITEFACE**

**Lot 13 - DAYS IDEAL N070 (AI) (S)**

**N070**

**BIRTH DATE - 13/05/2017**

ALLENDALE VAGABOND A74 (AI) (P)  
 ALLENDALE WATERHOUSE D1 (PP)  
 ALLENDALE MARLINE X185 (P)

REMITALL EMBRACER 8E (IMP CAN) (P)  
 DAYS BLACKBERRY G82 (AI) (P)  
 ALLENDALE FANCY B94 (AI) (P)

**SIRE - DAYS EXECUTIVE K168 (PP)**

ALLENDALE TIPPERARY D13 (AI) (ET) (P)  
 DAYS SILVIA G13 (AI) (P)  
 DAYS SILVIA E30 (AI) (P)

**DAM - DAYS LYDIA J116 (P)**

DAYS ROBIN HOOD E124 (P)  
 DAYS LYDIA G94 (P)  
 DAYS LYDIA E117 (P)

DECEMBER 2018 GROUP BREEDPLAN EBVS							
CE DIR	CE DTRS	GL	BWT	200W	400W	600W	MCW
<b>+3.8</b>	<b>+2.8</b>	<b>-3.7</b>	<b>+6.3</b>	<b>+44</b>	<b>+77</b>	<b>+107</b>	<b>+107</b>
42%	34%	73%	73%	68%	68%	71%	63%
MILK	SS	CWT	EMA	RIB	RUMP	RBV%	IMF%
<b>+22</b>	<b>+5.3</b>	<b>+64</b>	<b>+4.5</b>	<b>-0.9</b>	<b>-1.2</b>	<b>+2.1</b>	<b>-0.2</b>
46%	76%	58%	49%	54%	58%	51%	52%

\$ INDEX VALUE	
SUP MKT	+\$127
GRASS FED	+\$118
GRAIN FED	+\$128
EU	+\$143

Our first Executive son to be offered. Like his sire he is deep. Thick and attractive. Top 1% 400 day wt and scrotal size. Top 5% gestation length, 200 and 600 day wt, yield, supermarket, grassfed and EU indexes. Pigment 100/100.

PURCHASER:..... \$.....



PURCHASER:..... \$.....

# ALLEDALE / DAYS WHITEFACE 2019

## Acc. DAYS WHITEFACE

Lot 14 - DAYS N079 (AI) (PP)

**N079**

**BIRTH DATE - 15/05/2017**

SCHU-LAR ON TARGET 22S (IMP USA) (ET) (P)  
 HYALITE ON TARGET 936 (P)  
 HYALITE TS LASS 310 (P)

ALLEDALE WATERHOUSE D1 (PP)  
 DAYS ROBIN HOOD H38 (AI) (ET) (PP)  
 ALLEDALE FANCY U5 (AI) (P)

**SIRE - R LEADER 6964 (IMP USA) (PP)**

**DAM - DAYS MAVIS L69 (P)**

MSU TCF REVOLUTION 4R (IMP USA) (PP)  
 R MISS REVOLUTION 1009 (P)  
 R MISS WRANGLER 3007 (P)

DAYS ARMSTRONG E312 (P)  
 DAYS MAVIS H12 (P)  
 ALLEDALE MAVIS C122 (P)

DECEMBER 2018 GROUP BREEDPLAN EBVS							
CE DIR	CE DTRS	GL	BWT	200W	400W	600W	MCW
<b>-0.1</b>	<b>+0.6</b>	<b>+1.6</b>	<b>+4.8</b>	<b>+49</b>	<b>+77</b>	<b>+113</b>	<b>+91</b>
44%	29%	74%	73%	68%	69%	71%	63%
MILK	SS	CWT	EMA	RIB	RUMP	RBV%	IMF%
<b>+21</b>	<b>+5.0</b>	<b>+80</b>	<b>+6.0</b>	<b>+1.1</b>	<b>+1.5</b>	<b>+1.4</b>	<b>+0.6</b>
48%	76%	58%	50%	54%	58%	50%	52%

\$ INDEX VALUE	
SUP MKT	+\$146
GRASS FED	+\$140
GRAIN FED	+\$162
EU	+\$160

Homozygous Polled. Our first Leader son, a heifer's first calf has an outstanding carcass and figures. Mavis H12 had a son sell for \$13,000 to Edendale and has a very good Leader son in the sale, Lot 46. Top 1% 200, 400 and 600 day wt, scrotal size, carcass wt, supermarket, grassfed and EU indexes. Top 5% EMA and grain fed index. Pigment 0/100.

PURCHASER:..... \$.....



**Acc. DAYS WHITEFACE**

**Lot 15 - DAYS INSPECTOR N114 (AI) (PP)**

**N114**

**BIRTH DATE - 24/05/2017**

SCHU-LAR ON TARGET 22S (IMP USA) (ET) (P)  
 HYALITE ON TARGET 936 (P)  
 HYALITE TS LASS 310 (P)

ALLENDALE NATIONAL W168 (PP)  
 PINE HILL ENERGISE E604 (AI) (P)  
 PINE HILL SIRIKIT B705 (P)

**SIRE - R LEADER 6964 (IMP USA) (PP)**  
 MSU TCF REVOLUTION 4R (IMP USA) (PP)  
 R MISS REVOLUTION 1009 (P)  
 R MISS WRANGLER 3007 (P)

**DAM - DAYS TRILBY J170 (P)**  
 ALLENDALE TIPPERARY D13 (AI) (ET) (P)  
 DAYS TRILBY F115 (P)  
 ALLENDALE TRILBY D105 (AI) (P)

DECEMBER 2018 GROUP BREEDPLAN EBVS							
CE DIR	CE DTRS	GL	BWT	200W	400W	600W	MCW
<b>-2.5</b>	<b>-1.6</b>	<b>+1.8</b>	<b>6.3</b>	<b>+48</b>	<b>+72</b>	<b>+97</b>	<b>+76</b>
44%	30%	74%	73%	69%	69%	71%	62%
MILK	SS	CWT	EMA	RIB	RUMP	RBV%	IMF%
<b>+17</b>	<b>+3.6</b>	<b>+69</b>	<b>+5.8</b>	<b>+1.0</b>	<b>+0.8</b>	<b>+1.1</b>	<b>+0.7</b>
50%	76%	58%	50%	54%	58%	50%	52%

\$ INDEX VALUE	
SUP MKT	+\$115
GRASS FED	+\$110
GRAIN FED	+\$132
EU	+\$129

Homozygous Polled. Very long smooth skinned bull. Top 1% 200 day wt. Top 5% 400 day wt, scrotal size, carcass wt and EMA. Top 10% 600 day wt and all indexes. Pigment 100/100.

PURCHASER:..... \$.....



**LOT 15**



## Supporting your business.

Next time you are thinking about a partner for your livestock business, think Elders. Marketing over 1.72 million cattle and 9.5 million sheep each year by our livestock specialists located across Australia and overseas, ensures we have access to the relevant information and trends that will affect your business.

Our team will assist you to select the right sales option, whether that be through online or traditional channels, to ensure the best price is achieved. We can also work with you on improving productivity to gain more meat, wool or milk from your stock, as well as sourcing stock or land, or providing finance options to maintain cash flow. That's why Elders is the right choice to help you make more possible.

---

For more information contact:

Tom Dennis 0427 975 207

Ross Milne 0408 057 558

Tony Wetherall 0427 390 001

Andy McGeoch (NSW) 0418 737 470

[elders.com.au](http://elders.com.au)

*Elders*

ULT940 12/15

# Acc. ALLENDALE

## Lot 16 - ALLENDALE COLLINGWOOD N003 (AI) (P)

**N003**

**BIRTH DATE - 16/03/2017**

DEBARRY ELLIOTT (P)  
 MERAWAH ELLIOTT F115 (PP)  
 MERAWAH SHAMROCK A4 (ET) (P)  
**SIRE - KERLSON PINES JESTER J99 (PP)**  
 MINLACOWIE VALIANT NICK (AI) (ET) (P)  
 KERLSON PINES U-BEAUTY C34 (P)  
 KERLSON PINES U-BEAUTY Z9 (P)

HEATHERDALE OPIUM U78 (AI) (P)  
 HEATHERDALE MAGNUM C97 (P)  
 HEATHERDALE ALMOND JOY Z237 (P)  
**DAM - ALLENDALE BLUE MIST E13 (P)**  
 HEATHERDALE SOVEREIGN V11 (P)  
 HEATHERDALE BLUE MIST C25 (AI) (P)  
 HEATHERDALE BLUE MIST Z140 (P)

DECEMBER 2018 GROUP BREEDPLAN EBVS							
CE DIR	CE DTRS	GL	BWT	200W	400W	600W	MCW
<b>-1.8</b>	<b>-0.6</b>	<b>-3.1</b>	<b>+5.0</b>	<b>+34</b>	<b>+50</b>	<b>+66</b>	<b>+47</b>
43%	33%	74%	63%	61%	60%	61%	52%
MILK	SS	CWT	EMA	RIB	RUMP	RBV%	IMF%
<b>+16</b>	<b>+1.9</b>	<b>+45</b>	<b>+3.9</b>	<b>+2.2</b>	<b>+3.0</b>	<b>-0.5</b>	<b>+1.1</b>
48%	57%	48%	41%	46%	49%	44%	46%

\$ INDEX VALUE	
SUP MKT	+\$84
GRASS FED	+\$83
GRAIN FED	+\$104
EU	+\$91

Long, strong headed bull from the prolific female in Blue Mist E13. E13 has had 8 sons sell to \$20,000 to average \$11,500. We also retained another son Collingwood J29 who has some good sons in this sale. Top 1% Rib Fat. Top 5% GL and Rump Fat. Top 10% IMF. Pigment 100/100.

PURCHASER:..... \$.....

# Acc. ALLENDALE

## Lot 17 - ALLENDALE HILTON N079 (S)

**N079**

**BIRTH DATE - 15/05/2017**

SHF WONDER M326 W18 ET (P)  
 REMITALL-WEST GAME DAY ET 74Y (IMP CAN) (P)  
 REMITALL MARVEL 78T (IMP CAN) (P)  
**SIRE - ALLENDALE CHISEL L8 (ET) (S)**  
 SOUTH BUKALONG SHANNON 40 (PP)  
 ALLENDALE CORA D47 (AI) (P)  
 ALLENDALE CORA B7 (AI) (P)

ALLEDALE WATERHOUSE D1 (PP)  
 ALLENDALE BULLS-EYE F38 (AI) (P)  
 ALLENDALE CORA C14 (AI) (P)  
**DAM - ALLENDALE FANCY K158 (P)**  
 DAVIS 80U FACSIMILE 14X (IMP CAN) (P)  
 ALLENDALE FANCY S19 (AI) (P)  
 ALLENDALE FANCY N71 (P)

DECEMBER 2018 GROUP BREEDPLAN EBVS							
CE DIR	CE DTRS	GL	BWT	200W	400W	600W	MCW
<b>+3.1</b>	<b>+4.6</b>	<b>-1.5</b>	<b>+4.2</b>	<b>+37</b>	<b>+63</b>	<b>+92</b>	<b>+92</b>
40%	33%	47%	70%	65%	66%	69%	61%
MILK	SS	CWT	EMA	RIB	RUMP	RBV%	IMF%
<b>+16</b>	<b>+3.8</b>	<b>+58</b>	<b>+2.9</b>	<b>-0.3</b>	<b>-0.6</b>	<b>+1.4</b>	<b>-0.4</b>
43%	76%	56%	47%	52%	56%	49%	49%

\$ INDEX VALUE	
SUP MKT	+\$109
GRASS FED	+\$102
GRAIN FED	+\$105
EU	+\$121

A deep bodied, muscular, smooth skinned bull. Grand dam S19 is the dam of our Rosemount bulls that sold to \$52,000. Top 1% Scrotal Size. Top 10% Supermarket Index. Top 15% EU Index. Top 20% 200, 400 and 600 Day Wt, Carcase Wt and Grass Fed Index. Pigment 100/100.

PURCHASER:..... \$.....

# ALLENDALE / DAYS WHITEFACE 2019

## Acc. ALLENDALE

**Lot 18 - ALLENDALE N190 (P)**

**N190**

**BIRTH DATE - 03/2017**

ALLENDALE YACKA (AI) (P)  
ALLENDALE ANZAC E114 (PP)  
ALLENDALE DAWN B22 (AI) (ET) (P)

**DAM -**

**SIRE - ALLENDALE COLLINGWOOD J29 (AI) (PP)**  
HEATHERDALE MAGNUM C97 (P)  
ALLENDALE BLUE MIST E13 (P)  
HEATHERDALE BLUE MIST C25 (AI) (P)

DECEMBER 2018 GROUP BREEDPLAN EBVS							
CE DIR	CE DTRS	GL	BWT	200W	400W	600W	MCW
MILK	SS	CWT	EMA	RIB	RUMP	RBV%	IMF%

\$ INDEX VALUE	
SUP MKT	
GRASS FED	
GRAIN FED	
EU	

Excellent commercial bull sired by Collingwood J29. Pigment 95/100.

PURCHASER:..... \$.....

## Acc. ALLENDALE

**Lot 19 - ALLENDALE GANGSTER N011 (ET) (S)**

**N011**

**BIRTH DATE - 19/03/2017**

ALLENDALE PUNTER 3 (AI) (P)  
ALLENDALE YACKA (AI) (P)  
ALLENDALE FLORRIE Z33 (AI) (P)

MOUNT DIFFICULT FELLIS Y12 (AI) (P)  
WIRRUNA ABERCORN (AI) (P)  
WIRRUNA GOLDEN VANITY R94 (AI) (P)

**SIRE - ALLENDALE ANZAC E114 (PP)**  
ALLENDALE NATIONAL W168 (PP)  
ALLENDALE DAWN B22 (AI) (ET) (P)  
ALLENDALE DAWN T60 (AI) (P)

**DAM - ALLENDALE MARLINE E49 (P)**  
BOBANKEN X-CEPTIONAL X44 (P)  
ALLENDALE MARLINE A109 (P)  
ALLENDALE MARLINE V153 (P)

DECEMBER 2018 GROUP BREEDPLAN EBVS							
CE DIR	CE DTRS	GL	BWT	200W	400W	600W	MCW
<b>+1.8</b>	<b>-0.7</b>	<b>-2.2</b>	<b>+4.9</b>	<b>+40</b>	<b>+66</b>	<b>+90</b>	<b>+76</b>
55%	50%	65%	69%	68%	68%	68%	65%
MILK	SS	CWT	EMA	RIB	RUMP	RBV%	IMF%
<b>+18</b>	<b>+3.6</b>	<b>+62</b>	<b>+5.3</b>	<b>+0.5</b>	<b>+0.9</b>	<b>+1.1</b>	<b>+0.9</b>
64%	66%	61%	55%	59%	61%	56%	60%

\$ INDEX VALUE	
SUP MKT	+\$112
GRASS FED	+\$108
GRAIN FED	+\$130
EU	+\$124

A deep, long bodied bull. E49 has 4 sons in this sale and 2 good bulls for Wodonga. Top 5% Scrotal Size Top 10% GL, 200 & 400, Carcase Wt and EMA, Supermarket, Grainfed and EU indexes. Top 15% 600 Day Wt, IMF and Grassfed Index. Pigment 100/100.

PURCHASER:..... \$.....

# Acc. ALLENDALE

## Lot 20 - ALLENDALE GANGSTER N006 (ET) (P)

**N006**

**BIRTH DATE - 17/03/2017**

ALLEDALE YACKA (AI) (P)  
 ALLENDALE ANZAC E114 (PP)  
 ALLENDALE DAWN B22 (AI) (ET) (P)  
**SIRE - INJEMIRA ANZAC AI J188 (AI) (PP)**  
 PEAKES ARTIST A8 (P)  
 INJEMIRA PATTIE D119 (P)  
 INJEMIRA PATTIE Z130 (AI) (ET) (P)

MOUNT DIFFICULT FELLIS Y12 (AI) (P)  
 WIRRUNA ABERCORN (AI) (P)  
 WIRRUNA GOLDEN VANITY R94 (AI) (P)  
**DAM - ALLENDALE MARLINE E49 (P)**  
 BOBANKEN X-CEPTIONAL X44 (P)  
 ALLENDALE MARLINE A109 (P)  
 ALLENDALE MARLINE V153 (P)

DECEMBER 2018 GROUP BREEDPLAN EBVS							
CE DIR	CE DTRS	GL	BWT	200W	400W	600W	MCW
<b>-0.8</b>	<b>-0.7</b>	<b>-2.7</b>	<b>+5.1</b>	<b>+39</b>	<b>+64</b>	<b>+84</b>	<b>+74</b>
48%	39%	64%	70%	67%	67%	69%	61%
MILK	SS	CWT	EMA	RIB	RUMP	RBY%	IMF%
<b>+18</b>	<b>+2.3</b>	<b>+61</b>	<b>+5.9</b>	<b>+0.6</b>	<b>+0.9</b>	<b>+1.4</b>	<b>+0.3</b>
54%	72%	60%	52%	57%	60%	52%	58%

\$ INDEX VALUE	
SUP MKT	+\$97
GRASS FED	+\$92
GRAIN FED	+\$103
EU	+\$106

Long, correct bull. Full brother to Lot 21. E49 has 4 sons in this sale and 2 good bulls for Wodonga. Top 5% EMA. Top 10% GL. Top 15% 200 and 400 Day Wt and Carcase Wt. Pigment 100/100.

PURCHASER:..... \$.....

# Acc. ALLENDALE

## Lot 21 - ALLENDALE GANGSTER N012 (ET) (PP)

**N012**

**BIRTH DATE - 22/03/2017**

ALLEDALE YACKA (AI) (P)  
 ALLENDALE ANZAC E114 (PP)  
 ALLENDALE DAWN B22 (AI) (ET) (P)  
**SIRE - INJEMIRA ANZAC AI J188 (AI) (PP)**  
 PEAKES ARTIST A8 (P)  
 INJEMIRA PATTIE D119 (P)  
 INJEMIRA PATTIE Z130 (AI) (ET) (P)

MOUNT DIFFICULT FELLIS Y12 (AI) (P)  
 WIRRUNA ABERCORN (AI) (P)  
 WIRRUNA GOLDEN VANITY R94 (AI) (P)  
**DAM - ALLENDALE MARLINE E49 (P)**  
 BOBANKEN X-CEPTIONAL X44 (P)  
 ALLENDALE MARLINE A109 (P)  
 ALLENDALE MARLINE V153 (P)

DECEMBER 2018 GROUP BREEDPLAN EBVS							
CE DIR	CE DTRS	GL	BWT	200W	400W	600W	MCW
<b>-1.9</b>	<b>-1</b>	<b>-1.3</b>	<b>+4.2</b>	<b>+39</b>	<b>+63</b>	<b>+81</b>	<b>+60</b>
48%	39%	64%	73%	68%	68%	70%	63%
MILK	SS	CWT	EMA	RIB	RUMP	RBY%	IMF%
<b>+13</b>	<b>+2.5</b>	<b>+62</b>	<b>+6.0</b>	<b>+1.7</b>	<b>+2.6</b>	<b>+0.5</b>	<b>+1.2</b>
54%	74%	60%	52%	57%	60%	53%	58%

\$ INDEX VALUE	
SUP MKT	+\$106
GRASS FED	+\$104
GRAIN FED	+\$129
EU	+\$116

A thick, strong headed bull. Full brother to the previous lot. Top 5% EMA, Rib and Rump Fat. Top 10% Carcase Wt, IMF and Grainfed index. Top 15% 200 and 400 Day Wt, Supermarket and Grassfed Indexes. Top 20% Scrotal Size and EU Index. Pigment 100/100. HOMOZYGOUS POLL.

PURCHASER:..... \$.....

# ALLEDALE / DAYS WHITEFACE 2019

## Acc. ALLENDALE

### Lot 22 - ALLENDALE INNAMINCKA N098 (AI) (S)

**N098**

**BIRTH DATE - 21/05/2017**

ALLEDALE KING KONG 2 (S)  
ALLEDALE NATIONAL W168 (PP)  
ALLEDALE CORA R22 (P)

ALLEDALE SUPERSTAR B28 (AI) (ET) (S)  
ALLEDALE YALLAROI 2 (AI) (TW) (P)  
ALLEDALE FANCY A181 (AI) (P)

**SIRE - ALLENDALE WASHINGTON K5 (ET) (PP)**  
ALLEDALE OVERTON (P)  
ALLEDALE FANCY Z59 (P)  
ALLEDALE FANCY V35 (P)

**DAM - ALLENDALE MARLINE H15 (AI) (P)**  
WIRRUNA ABERCORN (AI) (P)  
ALLEDALE MARLINE E49 (P)  
ALLEDALE MARLINE A109 (P)

DECEMBER 2018 GROUP BREEDPLAN EBVS							
CE DIR	CE DTRS	GL	BWT	200W	400W	600W	MCW
<b>-11.3</b>	<b>-4.5</b>	<b>+0.2</b>	<b>+5.6</b>	<b>+34</b>	<b>+56</b>	<b>+78</b>	<b>+80</b>
46%	39%	76%	74%	69%	70%	72%	65%
MILK	SS	CWT	EMA	RIB	RUMP	RB%Y	IMF%
<b>+10</b>	<b>+2.4</b>	<b>+49</b>	<b>+3.8</b>	<b>+0.7</b>	<b>+1.0</b>	<b>+1.0</b>	<b>+0.2</b>
51%	77%	60%	52%	56%	60%	54%	54%

\$ INDEX VALUE	
SUP MKT	+\$64
GRASS FED	+\$59
GRAIN FED	+\$64
EU	+\$72

A quality, strong boned, deep bodied bull. Note granddam E49 the mother of the 3 previous lots. Top 20% Scrotal Size. Pigment 100/100.

PURCHASER:..... \$.....

## Acc. ALLENDALE

### Lot 23 - ALLENDALE ETHRIDGE N002 (ET) (S)

**N002**

**BIRTH DATE - 14/03/2017**

ALLEDALE PUNTER 3 (AI) (P)  
ALLEDALE YACKA (AI) (P)  
ALLEDALE FLORRIE Z33 (AI) (P)

ALLEDALE NATIONAL W168 (PP)  
ALLEDALE SUPERSTAR B26 (AI) (ET) (P)  
ALLEDALE DAWN T60 (AI) (P)

**SIRE - ALLENDALE ANZAC E114 (PP)**  
ALLEDALE NATIONAL W168 (PP)  
ALLEDALE DAWN B22 (AI) (ET) (P)  
ALLEDALE DAWN T60 (AI) (P)

**DAM - ALLENDALE KERRY MAID F7 (P)**  
WIRANYA ASCENDANT (P)  
WIRANYA KERRY MAID W28 (S)  
WIRANYA KERRY MAID T68 (AI) (H#)

DECEMBER 2018 GROUP BREEDPLAN EBVS							
CE DIR	CE DTRS	GL	BWT	200W	400W	600W	MCW
<b>+4.8</b>	<b>+1.8</b>	<b>-1.8</b>	<b>+2.9</b>	<b>+33</b>	<b>+54</b>	<b>+74</b>	<b>+59</b>
55%	50%	67%	74%	71%	72%	72%	67%
MILK	SS	CWT	EMA	RIB	RUMP	RB%Y	IMF%
<b>+19</b>	<b>+2.1</b>	<b>+54</b>	<b>+5.0</b>	<b>+1.7</b>	<b>+2.6</b>	<b>+0.4</b>	<b>+0.8</b>
64%	76%	63%	56%	60%	63%	57%	61%

\$ INDEX VALUE	
SUP MKT	+\$107
GRASS FED	+\$106
GRAIN FED	+\$121
EU	+\$116

Level, well balanced bull. A bull that could be used on heifers. F7 had Lot 1 in our 2015 sale selling to Crown Point Pastoral. Wiranya Kerry maid W28 was the top priced female at the Wiranya dispersal, purchased for \$17,500. Top 5% Rib and Rump Fat. Top 10% EMA. Top 15% GL, Supermarket and Grassfed Indexes. Top 20% Birth Wt, Milk, IMF, Grainfed and EU Indexes. Pigment 100/100.

PURCHASER:..... \$.....



**Acc. DAYS WHITEFACE**

**Lot 24 - DAYS GODFATHER N014 (AI) (ET) (S)**

**N014**

**BIRTH DATE - 21/03/2017**

BOWEN VINCENT V1 (S)  
 DEBARRY EDEN (PP)  
 DEBARRY PURITY V50 (AI) (ET) (P)

SOUTH BUKALONG WALKER 6 (AI) (P)  
 SOUTH BUKALONG WALLACE 2 (P)  
 SOUTH BUKALONG VICTORIA 152 (P)

**SIRE - ALLEDALE TIPPERARY D13 (AI) (ET) (P)**  
 KROY PARK JUDGE J9 (P)  
 ALLEDALE FANCY U64 (AI) (P)  
 ALLEDALE FANCY S21 (AI) (P)

**DAM - DAYS FANCY H31 (AI) (ET) (P)**  
 ALLEDALE NATIONAL W168 (PP)  
 ALLEDALE FANCY A7 (AI) (ET) (P)  
 ALLEDALE FANCY U5 (AI) (P)

DECEMBER 2018 GROUP BREEDPLAN EBVS							
CE DIR	CE DTRS	GL	BWT	200W	400W	600W	MCW
<b>+2.3</b>	<b>+1.2</b>	<b>-2.6</b>	<b>+4.4</b>	<b>+42</b>	<b>+62</b>	<b>+88</b>	<b>+57</b>
50%	44%	62%	73%	68%	68%	71%	65%
MILK	SS	CWT	EMA	RIB	RUMP	RBV%	IMF%
<b>+21</b>	<b>+2.4</b>	<b>+61</b>	<b>+4.3</b>	<b>+2.1</b>	<b>+3.5</b>	<b>-0.1</b>	<b>+1.8</b>
57%	76%	60%	53%	57%	60%	55%	56%

\$ INDEX VALUE	
SUP MKT	+\$125
GRASS FED	+\$124
GRAIN FED	+\$157
EU	+\$134

The first of 5 ET full brothers lotted consecutively. N014 is a long, deep, quality bull. Allendale Tipperary D13 was sold at Dubbo. His daughters have been exceptional. Fancy H31 is also dam of sire L44 and lot 11. Fancy U5 dam of the Robin Hood bulls. Top 5% IMF and all indexes. Top 10% gestation length, 200 day wt and milk. Pigment 100/100.

PURCHASER:..... \$.....



# ALLEDALE / DAYS WHITEFACE 2019

## Acc. DAYS WHITEFACE

Lot 25 - DAYS GODFATHER N009 (AI) (ET) (PP)

N009

BIRTH DATE - 21/03/2017

BOWEN VINCENT V1 (S)  
DEBARRY EDEN (PP)  
DEBARRY PURITY V50 (AI) (ET) (P)

SIRE - ALLENDALE TIPPERARY D13 (AI) (ET) (P)  
KROY PARK JUDGE J9 (P)  
ALLEDALE FANCY U64 (AI) (P)  
ALLEDALE FANCY S21 (AI) (P)

SOUTH BUKALONG WALKER 6 (AI) (P)  
SOUTH BUKALONG WALLACE 2 (P)  
SOUTH BUKALONG VICTORIA 152 (P)

DAM - DAYS FANCY H31 (AI) (ET) (P)  
ALLEDALE NATIONAL W168 (PP)  
ALLEDALE FANCY A7 (AI) (ET) (P)  
ALLEDALE FANCY U5 (AI) (P)

DECEMBER 2018 GROUP BREEDPLAN EBVS							
CE DIR	CE DTRS	GL	BWT	200W	400W	600W	MCW
<b>+1.1</b>	<b>+1.0</b>	<b>-1.5</b>	<b>+6.6</b>	<b>+48</b>	<b>+72</b>	<b>+103</b>	<b>+73</b>
50%	44%	61%	73%	68%	68%	71%	65%
MILK	SS	CWT	EMA	RIB	RUMP	RBV%	IMF%
<b>+22</b>	<b>+2.7</b>	<b>+65</b>	<b>+4.6</b>	<b>+1.1</b>	<b>+1.6</b>	<b>+0.7</b>	<b>+1.8</b>
56%	76%	60%	53%	57%	60%	55%	56%

\$ INDEX VALUE	
SUP MKT	+\$130
GRASS FED	+\$126
GRAIN FED	+\$164
EU	+\$142

Homozygous Polled. Big strong bull with a very good carcasse. See notes lot 24. Top 1% 200 day wt. Top 5% 400 and 600 day wt, milk, IMF and all indexes. Pigment 100/100.

PURCHASER:..... \$.....

## Acc. DAYS WHITEFACE

Lot 26 - DAYS GODFATHER N011 (AI) (ET) (S)

N011

BIRTH DATE - 23/03/2017

BOWEN VINCENT V1 (S)  
DEBARRY EDEN (PP)  
DEBARRY PURITY V50 (AI) (ET) (P)

SIRE - ALLENDALE TIPPERARY D13 (AI) (ET) (P)  
KROY PARK JUDGE J9 (P)  
ALLEDALE FANCY U64 (AI) (P)  
ALLEDALE FANCY S21 (AI) (P)

SOUTH BUKALONG WALKER 6 (AI) (P)  
SOUTH BUKALONG WALLACE 2 (P)  
SOUTH BUKALONG VICTORIA 152 (P)

DAM - DAYS FANCY H31 (AI) (ET) (P)  
ALLEDALE NATIONAL W168 (PP)  
ALLEDALE FANCY A7 (AI) (ET) (P)  
ALLEDALE FANCY U5 (AI) (P)

DECEMBER 2018 GROUP BREEDPLAN EBVS							
CE DIR	CE DTRS	GL	BWT	200W	400W	600W	MCW
<b>-0.7</b>	<b>+0.5</b>	<b>+0.0</b>	<b>+7.0</b>	<b>+48</b>	<b>+77</b>	<b>+113</b>	<b>+80</b>
50%	44%	61%	73%	68%	68%	71%	65%
MILK	SS	CWT	EMA	RIB	RUMP	RBV%	IMF%
<b>+25</b>	<b>+2.5</b>	<b>+70</b>	<b>+4.7</b>	<b>+1.1</b>	<b>+1.8</b>	<b>+0.9</b>	<b>+2.1</b>
56%	76%	60%	53%	57%	60%	55%	56%

\$ INDEX VALUE	
SUP MKT	+\$139
GRASS FED	+\$134
GRAIN FED	+\$178
EU	+\$150

Strong topped medium framed bull. See notes lot 24. Top 1% 200, 400 and 600 day wt, milk, IMF, supermarket, grassfed and grainfed indexes. Top 5% carcasse wt and EU index. Pigment 100/100.

PURCHASER:..... \$.....

# Acc. DAYS WHITEFACE

**Lot 27 - DAYS GODFATHER N003 (AI) (ET) (S)**

**N003**

**BIRTH DATE - 21/03/2017**

BOWEN VINCENT V1 (S)  
 DEBARRY EDEN (PP)  
 DEBARRY PURITY V50 (AI) (ET) (P)  
**SIRE - ALLENDALE TIPPERARY D13 (AI) (ET) (P)**  
 KROY PARK JUDGE J9 (P)  
 ALLENDALE FANCY U64 (AI) (P)  
 ALLENDALE FANCY S21 (AI) (P)

SOUTH BUKALONG WALKER 6 (AI) (P)  
 SOUTH BUKALONG WALLACE 2 (P)  
 SOUTH BUKALONG VICTORIA 152 (P)  
**DAM - DAYS FANCY H31 (AI) (ET) (P)**  
 ALLENDALE NATIONAL W168 (PP)  
 ALLENDALE FANCY A7 (AI) (ET) (P)  
 ALLENDALE FANCY U5 (AI) (P)

DECEMBER 2018 GROUP BREEDPLAN EBVS								\$ INDEX VALUE	
CE DIR	CE DTRS	GL	BWT	200W	400W	600W	MCW	SUP MKT	+
<b>+1.7</b>	<b>+1.1</b>	<b>-1.8</b>	<b>+5.0</b>	<b>+42</b>	<b>+66</b>	<b>+95</b>	<b>+63</b>		+\$128
50%	44%	61%	73%	68%	68%	71%	65%	GRASS FED	+\$126
MILK	SS	CWT	EMA	RIB	RUMP	RBV%	IMF%	GRAIN FED	+
<b>+20</b>	<b>+2.6</b>	<b>+62</b>	<b>+4.4</b>	<b>+1.7</b>	<b>+2.7</b>	<b>+0.3</b>	<b>+1.7</b>		+\$160
56%	76%	60%	53%	57%	60%	55%	56%	EU	+\$138

Big, long bull. See notes lot 24. Top 5% 200 day wt, IMF and all indexes. Top 5% 400 and 600 day wt and all indexes. Pigment 100/100.

PURCHASER:..... \$.....

# Acc. DAYS WHITEFACE

**Lot 28 - DAYS GODFATHER N006 (AI) (ET) (PP)**

**N006**

**BIRTH DATE - 20/03/2017**

BOWEN VINCENT V1 (S)  
 DEBARRY EDEN (PP)  
 DEBARRY PURITY V50 (AI) (ET) (P)  
**SIRE - ALLENDALE TIPPERARY D13 (AI) (ET) (P)**  
 KROY PARK JUDGE J9 (P)  
 ALLENDALE FANCY U64 (AI) (P)  
 ALLENDALE FANCY S21 (AI) (P)

SOUTH BUKALONG WALKER 6 (AI) (P)  
 SOUTH BUKALONG WALLACE 2 (P)  
 SOUTH BUKALONG VICTORIA 152 (P)  
**DAM - DAYS FANCY H31 (AI) (ET) (P)**  
 ALLENDALE NATIONAL W168 (PP)  
 ALLENDALE FANCY A7 (AI) (ET) (P)  
 ALLENDALE FANCY U5 (AI) (P)

DECEMBER 2018 GROUP BREEDPLAN EBVS								\$ INDEX VALUE	
CE DIR	CE DTRS	GL	BWT	200W	400W	600W	MCW	SUP MKT	+
<b>+1.1</b>	<b>+1.0</b>	<b>-1.3</b>	<b>+5.8</b>	<b>+40</b>	<b>+64</b>	<b>+92</b>	<b>+67</b>		+\$114
50%	44%	62%	73%	68%	68%	71%	65%	GRASS FED	+\$110
MILK	SS	CWT	EMA	RIB	RUMP	RBV%	IMF%	GRAIN FED	+
<b>+23</b>	<b>+3.5</b>	<b>+57</b>	<b>+3.1</b>	<b>+1.0</b>	<b>+1.6</b>	<b>+0.6</b>	<b>+0.9</b>		+\$133
57%	76%	60%	53%	57%	60%	55%	56%	EU	+\$124

Homozygous Polled. A quality, smooth bodied bull. See notes lot 24. Top 5% milk and scrotal size. Top 10% 200 day wt and all indexes. Pigment 100/100.

PURCHASER:..... \$.....

# ALLEDALE / DAYS WHITEFACE 2019

## Acc. DAYS WHITEFACE

Lot 29 - DAYS IMPACT N152 (AI) (PP)

N152

BIRTH DATE - 08/06/2017

SCHU-LAR ON TARGET 22S (IMP USA) (ET) (P)  
HYALITE ON TARGET 936 (P)  
HYALITE TS LASS 310 (P)

SIRE - R LEADER 6964 (IMP USA) (PP)

MSU TCF REVOLUTION 4R (IMP USA) (PP)  
R MISS REVOLUTION 1009 (P)  
R MISS WRANGLER 3007 (P)

ALLEDALE SUPERSTAR B28 (AI) (ET) (S)  
DAYS WASHINGTON H35 (AI) (ET) (P)  
ALLEDALE FANCY Z59 (P)

DAM - DAYS CORA K157 (P)

ALLEDALE WATERHOUSE D1 (PP)  
DAYS CORA G23 (AI) (P)  
DAYS CORA E38 (AI) (P)

### DECEMBER 2018 GROUP BREEDPLAN EBVS

CE DIR	CE DTRS	GL	BWT	200W	400W	600W	MCW
3.7	+4.1	-0.3	+4.7	+44	+66	+90	+81
43%	28%	73%	72%	67%	67%	66%	58%
MILK	SS	CWT	EMA	RIB	RUMP	RBV%	IMF%
+18	+2.7	+66	+5.3	+1.2	+1.5	+1.0	+0.0
47%	76%	54%	49%	53%	57%	49%	50%

### \$ INDEX VALUE

SUP MKT	+\$119
GRASS FED	+\$114
GRAIN FED	+\$121
EU	+\$130

Homozygous Polled. Long, deep, correct, smooth skinned bull with a sire's outlook. Cora E38 dam of Elaborate J59 and K107 selling at Wodonga for \$13,000 and \$22,000. Top 5% 200 day wt and carcass wt. Top 10% 400 day wt, EMA, supermarket, grassfed and EU indexes. Pigment 100/100.

PURCHASER: ..... \$ .....



**Acc. DAYS WHITEFACE**

**Lot 30 - DAYS HIJACKER N167 (AI) (PP)**

**N167**

**BIRTH DATE - 14/06/2017**

SCHU-LAR ON TARGET 22S (IMP USA) (ET) (P)  
 HYALITE ON TARGET 936 (P)  
 HYALITE TS LASS 310 (P)

WIRRUNA DAFFY D1 (P)  
 WIRRUNA GEELONG G171 (AI) (PP)  
 WIRRUNA LAST DAY E163 (AI) (P)

**SIRE - R LEADER 6964 (IMP USA) (PP)**  
 MSU TCF REVOLUTION 4R (IMP USA) (PP)  
 R MISS REVOLUTION 1009 (P)  
 R MISS WRANGLER 3007 (P)

**DAM - DAYS DAWN K8 (AI) (ET) (P)**  
 ALLENDALE ROBIN HOOD Z239 (P)  
 ALLENDALE DAWN C62 (AI) (P)  
 ALLENDALE DAWN A150 (AI) (ET) (P)

DECEMBER 2018 GROUP BREEDPLAN EBVS								\$ INDEX VALUE	
CE DIR	CE DTRS	GL	BWT	200W	400W	600W	MCW	SUP MKT	+\$115
<b>+2.0</b>	<b>+2.8</b>	<b>+2.6</b>	<b>+5.1</b>	<b>+40</b>	<b>+62</b>	<b>+81</b>	<b>+79</b>	GRASS FED	+\$111
45%	31%	74%	73%	68%	68%	67%	59%	GRAIN FED	+\$121
MILK	SS	CWT	EMA	RIB	RUMP	RBV%	IMF%	EU	+\$133
<b>+12</b>	<b>+4.8</b>	<b>+59</b>	<b>+5.8</b>	<b>+1.2</b>	<b>+1.1</b>	<b>+1.7</b>	<b>+0.0</b>		
50%	77%	56%	51%	54%	58%	51%	53%		

Homozygous Polled. Long bodied, smooth skinned Leader son. Dawn C62 is dam of Calibre G74 selling for Dubbo record of \$90,000 to Bowen and Melville Park. 3 other sons have averaged \$14,000 on property. Top 1% scrotal size. Top 5% EMA. Top 10% 200 day wt, supermarket, grassfed and EU indexes. Pigment 100/100.

PURCHASER:..... \$.....



# ALLENDALE / DAYS WHITEFACE 2019

## Acc. DAYS WHITEFACE

**Lot 31 - DAYS IMPERIAL N193 (PP)**

**N193**

**BIRTH DATE - 05/07/2017**

ALLENDALE VAGABOND A74 (AI) (P)  
 ALLENDALE WATERHOUSE D1 (PP)  
 ALLENDALE MARLINE X185 (P)

TH 71U 719T MR HEREFORD 11X (IMP USA) (P)  
 TH 70R 11X MR HEREFORD 34Z (IMP USA) (P)  
 TH 172J 57G QUEEN MAKER 70R (P)

**SIRE - DAYS ROBIN HOOD H38 (AI) (ET) (PP)**  
 ALLENDALE KENWORTH 2 (P)  
 ALLENDALE FANCY U5 (AI) (P)  
 ALLENDALE FANCY 248 (AI) (P)

**DAM - DAYS FANCY K110 (AI) (P)**  
 DAYS WIZARD F5 (AI) (ET) (S)  
 DAYS FANCY H166 (P)  
 ALLENDALE FANCY A230 (P)

DECEMBER 2018 GROUP BREEDPLAN EBVS							
CE DIR	CE DTRS	GL	BWT	200W	400W	600W	MCW
<b>+1.1</b>	<b>+3.3</b>	<b>-0.5</b>	<b>+5.3</b>	<b>+39</b>	<b>+60</b>	<b>+87</b>	<b>+68</b>
51%	42%	66%	73%	69%	69%	69%	64%
MILK	SS	CWT	EMA	RIB	RUMP	RBV%	IMF%
<b>+19</b>	<b>+4.6</b>	<b>+59</b>	<b>+6.5</b>	<b>+2.2</b>	<b>+4.5</b>	<b>+0.0</b>	<b>+1.1</b>
54%	77%	62%	56%	59%	63%	55%	60%

\$ INDEX VALUE	
SUP MKT	+\$130
GRASS FED	+\$129
GRAIN FED	+\$153
EU	+\$142

Homozgyous Polled. Big long bull, by old favourite H38, with a very good carcass and sires outlook. His dam Fancy K110 reared one of our best 2018 drop bull calves. Top 1% scrotal size and EMA. Top 5% all indexes. Top 10% IMF. Pigment 100/100.

PURCHASER:..... \$.....



Acc. DAYS WHITEFACE

Lot 32 - DAYS INDICATOR N148 (AI) (PP)

N148

BIRTH DATE - 07/06/2017

SCHU-LAR ON TARGET 22S (IMP USA) (ET) (P)  
 HYALITE ON TARGET 936 (P)  
 HYALITE TS LASS 310 (P)

ALLEDALE VAGABOND A74 (AI) (P)  
 ALLEDALE WATERHOUSE D1 (PP)  
 ALLEDALE MARLINE X185 (P)

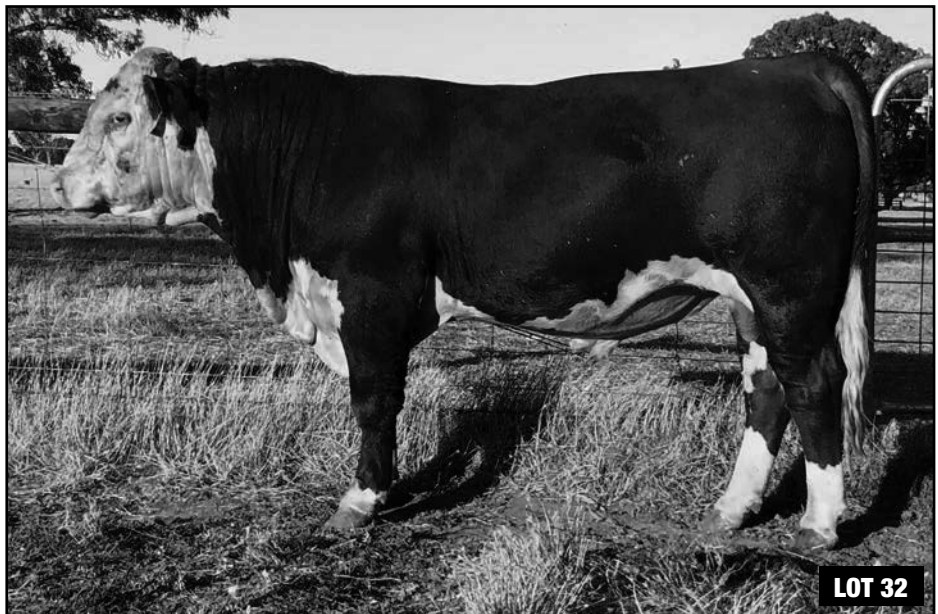
SIRE - R LEADER 6964 (IMP USA) (PP)  
 MSU TCF REVOLUTION 4R (IMP USA) (PP)  
 R MISS REVOLUTION 1009 (P)  
 R MISS WRANGLER 3007 (P)

DAM - DAYS DAWN H71 (P)  
 ALLEDALE ROBIN HOOD Z239 (P)  
 ALLEDALE DAWN C62 (AI) (P)  
 ALLEDALE DAWN A150 (AI) (ET) (P)

DECEMBER 2018 GROUP BREEDPLAN EBVS								\$ INDEX VALUE	
CE DIR	CE DTRS	GL	BWT	200W	400W	600W	MCW	SUP MKT	+\$121
<b>+8.1</b>	<b>+6.7</b>	<b>-1.3</b>	<b>+0.5</b>	<b>+33</b>	<b>+59</b>	<b>+75</b>	<b>+81</b>	GRASS FED	+\$119
47%	34%	75%	73%	69%	69%	67%	60%	GRAIN FED	+\$133
MILK	SS	CWT	EMA	RIB	RUMP	RBY%	IMF%	EU	+\$138
<b>+16</b>	<b>+3.9</b>	<b>+61</b>	<b>+6.0</b>	<b>+0.6</b>	<b>+0.7</b>	<b>+1.4</b>	<b>+0.6</b>		
52%	76%	57%	52%	55%	59%	52%	54%		

Homozygous Polled. Long, strong topped low birth weight bull. Dawn H71 is a full sister to Calibre G74, Dubbo record holder at \$90,000. Top 1% scrotal size. Top 5% birthweight, EMA, supermarket, grassfed and EU indexes. Top 10% calving ease and grained index. Pigment 98/100.

PURCHASER: ..... \$.....



# ALLEDALE / DAYS WHITEFACE 2019

## Acc. DAYS WHITEFACE

### Lot 33 - DAYS GALLIPOLI N153 (PP)

### N153

**BIRTH DATE - 08/06/2017**

TH 71U 719T MR HEREFORD 11X (IMP USA) (P)  
TH 70R 11X MR HEREFORD 34Z (IMP USA) (P)  
TH 172J 57G QUEEN MAKER 70R (P)

ALLEDALE WATERHOUSE D1 (PP)  
DAYS CALIBRE G74 (PP)  
ALLEDALE DAWN C62 (AI) (P)

**SIRE - DAYS GODFATHER L44 (AI) (S)**

SOUTH BUKALONG WALLACE 2 (P)  
DAYS FANCY H31 (AI) (ET) (P)  
ALLEDALE FANCY A7 (AI) (ET) (P)

**DAM - DAYS FANCY J76 (AI) (P)**

ALLEDALE WASHINGTON D57 (AI) (P)  
DAYS FANCY F38 (AI) (P)  
ALLEDALE FANCY C231 (P)

DECEMBER 2018 GROUP BREEDPLAN EBVS							
CE DIR	CE DTRS	GL	BWT	200W	400W	600W	MCW
<b>+2.9</b>	<b>+4.4</b>	<b>-1.6</b>	<b>+4.3</b>	<b>+38</b>	<b>+64</b>	<b>+91</b>	<b>+83</b>
41%	33%	60%	71%	65%	65%	64%	58%
MILK	SS	CWT	EMA	RIB	RUMP	RBV%	IMF%
<b>+13</b>	<b>+2.5</b>	<b>+65</b>	<b>+6.3</b>	<b>+1.5</b>	<b>+2.4</b>	<b>+0.7</b>	<b>+1.6</b>
46%	76%	53%	48%	52%	56%	50%	51%

\$ INDEX VALUE	
SUP MKT	+\$129
GRASS FED	+\$128
GRAIN FED	+\$158
EU	+\$143

Homozygous Polled. Long, correct bull who is a maternal brother to stud sire Gallipoli L142. Top 5% EMA, IMF and all indexes. Pigment 100/100.

PURCHASER:..... \$.....

## Acc. DAYS WHITEFACE

### Lot 34 - DAYS GRADUATE N213 (PP)

### N213

**BIRTH DATE - 19/07/2017**

TH 71U 719T MR HEREFORD 11X (IMP USA) (P)  
TH 70R 11X MR HEREFORD 34Z (IMP USA) (P)  
TH 172J 57G QUEEN MAKER 70R (P)

JAMENA EX VIEW (P)  
ALLEDALE VAN DIEMEN A124 (P)  
ALLEDALE FANCY X213 (P)

**SIRE - DAYS GODFATHER L44 (AI) (S)**

SOUTH BUKALONG WALLACE 2 (P)  
DAYS FANCY H31 (AI) (ET) (P)  
ALLEDALE FANCY A7 (AI) (ET) (P)

**DAM - DAYS SIRIKIT G164 (P)**

PINE HILL CAPITAL W515 (AI) (P)  
PINE HILL SIRIKIT Z636 (P)  
PINE HILL SIRIKIT X620 (AI) (P)

DECEMBER 2018 GROUP BREEDPLAN EBVS							
CE DIR	CE DTRS	GL	BWT	200W	400W	600W	MCW
<b>+1.8</b>	<b>+0.5</b>	<b>-0.2</b>	<b>+5.0</b>	<b>+44</b>	<b>+73</b>	<b>+108</b>	<b>+89</b>
40%	32%	54%	71%	65%	65%	63%	57%
MILK	SS	CWT	EMA	RIB	RUMP	RBV%	IMF%
<b>+18</b>	<b>+2.5</b>	<b>+70</b>	<b>+3.0</b>	<b>+1.0</b>	<b>+1.2</b>	<b>-0.4</b>	<b>+1.3</b>
47%	76%	52%	47%	51%	56%	49%	49%

\$ INDEX VALUE	
SUP MKT	+\$123
GRASS FED	+\$117
GRAIN FED	+\$145
EU	+\$131

Homozygous Polled. Long, stretchy upstanding bull. Sirikit G164 has had 2 sons sell to Winderadeen to average \$7,250. Top 5% 200, 400 and 600 day wt, carcass wt, supermarket and grainfed indexes. Top 10% grassfed and EU indexes. Pigment 100/100.

PURCHASER:..... \$.....



# Acc. DAYS WHITEFACE

**Lot 35 - DAYS GLADIATOR N140 (AI) (S)**

**N140**

**BIRTH DATE - 04/06/2017**

ALLEDALE VAGABOND A74 (AI) (P)  
 ALLEDALE WATERHOUSE D1 (PP)  
 ALLEDALE MARLINE X185 (P)

ALLEDALE KING KONG 2 (S)  
 ALLEDALE NATIONAL W168 (PP)  
 ALLEDALE CORA R22 (P)

**SIRE - DAYS EXECUTIVE K168 (PP)**

ALLEDALE TIPPERARY D13 (AI) (ET) (P)  
 DAYS SILVIA G13 (AI) (P)  
 DAYS SILVIA E30 (AI) (P)

**DAM - DAYS HARMONY H23 (AI) (ET) (P)**

ALLEDALE INVESTIGATOR 3 (P)  
 ALLEDALE HARMONY S37 (P)  
 ALLEDALE HARMONY P155 (AI) (P)

DECEMBER 2018 GROUP BREEDPLAN EBVS								\$ INDEX VALUE	
CE DIR	CE DTRS	GL	BWT	200W	400W	600W	MCW	SUP MKT	VALUE
<b>+6.5</b>	<b>+4.3</b>	<b>-3.2</b>	<b>+3.1</b>	<b>+32</b>	<b>+59</b>	<b>+78</b>	<b>+81</b>		+\$99
46%	40%	73%	73%	68%	68%	67%	61%	GRASS FED	+\$96
MILK	SS	CWT	EMA	RIB	RUMP	RBV%	IMF%	GRAIN FED	+\$103
<b>+13</b>	<b>+1.8</b>	<b>+55</b>	<b>+5.2</b>	<b>-0.1</b>	<b>+0.2</b>	<b>+1.4</b>	<b>+0.3</b>	EU	+\$110
49%	78%	57%	52%	56%	59%	54%	54%		

Long, deep bodied bull. Son of H23 sold for \$8,000 to Winderadeen. Top 5% gestation length. Top 10% EMA. Pigment 100/100.

PURCHASER:..... \$.....

# Acc. DAYS WHITEFACE

**Lot 36 - DAYS IDAHO N133 (S)**

**N133**

**BIRTH DATE - 01/06/2017**

TH 71U 719T MR HEREFORD 11X (IMP USA) (P)  
 TH 70R 11X MR HEREFORD 34Z (IMP USA) (P)  
 TH 172J 57G QUEEN MAKER 70R (P)

ALLEDALE WATERHOUSE D1 (PP)  
 DAYS ROBIN HOOD H38 (AI) (ET) (PP)  
 ALLEDALE FANCY U5 (AI) (P)

**SIRE - DAYS GUNPOWDER L13 (AI) (S)**

ALLEDALE WATERHOUSE D1 (PP)  
 DAYS DAWN J71 (P)  
 ALLEDALE DAWN D161 (P)

**DAM - DAYS FANCY L92 (P)**

ALLEDALE SUPERSTAR B28 (AI) (ET) (S)  
 DAYS FANCY G89 (AI) (ET) (P)  
 ALLEDALE FANCY Z59 (P)

DECEMBER 2018 GROUP BREEDPLAN EBVS								\$ INDEX VALUE	
CE DIR	CE DTRS	GL	BWT	200W	400W	600W	MCW	SUP MKT	VALUE
<b>+1.3</b>	<b>+2.8</b>	<b>-2.8</b>	<b>+5.0</b>	<b>+36</b>	<b>+63</b>	<b>+89</b>	<b>+88</b>		+\$111
43%	33%	53%	70%	65%	65%	64%	58%	GRASS FED	+\$108
MILK	SS	CWT	EMA	RIB	RUMP	RBV%	IMF%	GRAIN FED	+\$134
<b>+19</b>	<b>+1.8</b>	<b>+60</b>	<b>+6.4</b>	<b>+0.7</b>	<b>+1.5</b>	<b>+0.9</b>	<b>+1.5</b>	EU	+\$122
42%	76%	54%	49%	53%	57%	50%	50%		

Thick, easy doing heifer's first calf. Top 5% EMA and IMF. Top 10% gestation length and grainfed index. Pigment 100/100.

PURCHASER:..... \$.....

zoetis

# MISSING LEPTOSPIROSIS VACCINATIONS COULD LAY YOU OFF WORK FOR MONTHS

In addition to reducing the reproductive performance of beef and dairy herds, leptospirosis can spread from cattle to humans and develop into an ongoing chronic-fatigue-like illness

Don't risk your family, your employees, yourself or your herd. Vaccinate your cattle with Ultravac® 7in1\*, the only 7in1 that prevents shedding of leptospires, and can be used in calves from 4 weeks of age.

**Protection against leptospirosis and clostridial diseases**



FOR MORE INFORMATION, SPEAK TO YOUR LOCAL ZOEIIS REPRESENTATIVE OR CALL 1800 963 847

\*See product leaflet for details of administration and product claims.

Zoetis Australia Pty Ltd, ABN 94 156 476 425, Level 6, 5 Baker Boulevard, Rhodes NSW 2138. © 2016 Zoetis Inc. All rights reserved. Z0450 08/16.

**Acc. ALLENDALE**

**Lot 37 - ALLENDALE IMMORTAL N139 (PP)**

**N139**

**BIRTH DATE - 10/06/2017**

ALLENDALE YACKA (AI) (P)  
 ALLENDALE ANZAC E114 (PP)  
 ALLENDALE DAWN B22 (AI) (ET) (P)  
**SIRE - ALLENDALE COLLINGWOOD J29 (AI) (PP)**  
 HEATHERDALE MAGNUM C97 (P)  
 ALLENDALE BLUE MIST E13 (P)  
 HEATHERDALE BLUE MIST C25 (AI) (P)

SHF WONDER M326 W18 ET (P)  
 REMITALL-WEST GAME DAY ET 74Y (IMP CAN) (P)  
 REMITALL MARVEL 78T (IMP CAN) (P)  
**DAM - ALLENDALE DAISY K63 (AI) (P)**  
 ALLENDALE WATERLOO B50 (AI) (P)  
 ALLENDALE DAISY D48 (AI) (P)  
 ALLENDALE DAISY Z80 (TW) (P)

DECEMBER 2018 GROUP BREEDPLAN EBVS							
CE DIR	CE DTRS	GL	BWT	200W	400W	600W	MCW
<b>-5.2</b>	<b>+0.7</b>	<b>+1.3</b>	<b>+7.3</b>	<b>+42</b>	<b>+77</b>	<b>+108</b>	<b>+92</b>
43%	34%	59%	73%	67%	68%	71%	63%
MILK	SS	CWT	EMA	RIB	RUMP	RBV%	IMF%
<b>+20</b>	<b>+4.8</b>	<b>+71</b>	<b>+6.7</b>	<b>+1.6</b>	<b>+2.2</b>	<b>+0.1</b>	<b>+2.0</b>
47%	76%	58%	49%	54%	58%	52%	52%

\$ INDEX VALUE	
SUP MKT	+\$129
GRASS FED	+\$125
GRAIN FED	+\$167
EU	+\$143

Long bodied bull from a good RWGD daughter. The type, pedigree and figures of this bull make him a very interesting package. Top 1% 400 Day wt, Scrotal Size, EMA and IMF. Top 5% 200 and 600 Day Wt and Rib and Rump fat. Top 10% all Indexes. Top 15% Milk. Pigment 100/100. HOMOZYGOUS POLL.

PURCHASER: ..... \$.....



*EJS*

**LOT 37**

# ALLENDALE / DAYS WHITEFACE 2019

## Acc. ALLENDALE

**Lot 38 - ALLENDALE GAMBLE N123 (P)**

**N123**

**BIRTH DATE - 03/06/2017**

ALLENDALE YACKA (AI) (P)  
 ALLENDALE ANZAC E114 (PP)  
 ALLENDALE DAWN B22 (AI) (ET) (P)

**SIRE - ALLENDALE COLLINGWOOD J29 (AI) (PP)**  
 HEATHERDALE MAGNUM C97 (P)  
 ALLENDALE BLUE MIST E13 (P)  
 HEATHERDALE BLUE MIST C25 (AI) (P)

OKAWA COMMODORE 020076 (IMP NZL) (P)  
 ALLENDALE AMAZON E16 (AI) (S)  
 DEBARRY VIRGINIA A175 (P)

**DAM - ALLENDALE DAISY G167 (P)**  
 ALLENDALE LANDLORD 3 (AI) (P)  
 ALLENDALE DAISY X216 (P)  
 ALLENDALE DAISY M7 (H)

DECEMBER 2018 GROUP BREEDPLAN EBVS							
CE DIR	CE DTRS	GL	BWT	200W	400W	600W	MCW
<b>-0.7</b>	<b>-0.7</b>	<b>-0.4</b>	<b>+6.5</b>	<b>+39</b>	<b>+60</b>	<b>+92</b>	<b>+67</b>
43%	35%	51%	73%	67%	68%	70%	63%
MILK	SS	CWT	EMA	RIB	RUMP	RBV%	IMF%
<b>+17</b>	<b>+2.7</b>	<b>+57</b>	<b>+5.2</b>	<b>+1.1</b>	<b>+1.5</b>	<b>+1.0</b>	<b>+0.8</b>
49%	76%	57%	48%	54%	58%	51%	52%

\$ INDEX VALUE	
SUP MKT	+\$113
GRASS FED	+\$110
GRAIN FED	+\$134
EU	+\$126

A muscular, long bull. Top 10% EMA, Supermarket, Grass fed, Grain Fed and EU Indexes. Top 15% 200 & 600 Day Wt, Scrotal Size, Rib and Rump Fat. Top 20% IMF. Pigment 100/100.

PURCHASER:..... \$.....



# Acc. ALLENDALE

## Lot 39 - ALLENDALE GLENDAMBO N167 (PP)

**N167**

**BIRTH DATE - 05/07/2017**

SHF WONDER M326 W18 ET (P)  
 REMITALL-WEST GAME DAY ET 74Y (IMP CAN) (P)  
 REMITALL MARVEL 78T (IMP CAN) (P)

ALLENDALE WATERHOUSE D1 (PP)  
 ALLENDALE WASHINGTON G82 (ET) (P)  
 ALLENDALE FANCY Z59 (P)

**SIRE - ALLENDALE CHISEL L8 (ET) (S)**  
 SOUTH BUKALONG SHANNON 40 (PP)  
 ALLENDALE CORA D47 (AI) (P)  
 ALLENDALE CORA B7 (AI) (P)

**DAM - ALLENDALE FANCY J2 (P)**  
 ALLENDALE YALLAROI 2 (AI) (TW) (P)  
 ALLENDALE FANCY G108 (P)  
 ALLENDALE FANCY A158 (AI) (ET) (S)

DECEMBER 2018 GROUP BREEDPLAN EBVS								\$ INDEX VALUE	
CE DIR	CE DTRS	GL	BWT	200W	400W	600W	MCW	SUP MKT	
<b>-0.1</b>	<b>+4.1</b>	<b>-1.0</b>	<b>+4.4</b>	<b>+37</b>	<b>+69</b>	<b>+91</b>	<b>+85</b>		+\$112
39%	31%	51%	71%	65%	65%	68%	60%	GRASS FED	+\$108
MILK	SS	CWT	EMA	RIB	RUMP	RBV%	IMF%	GRAIN FED	
<b>+16</b>	<b>+3.5</b>	<b>+58</b>	<b>+3.0</b>	<b>+0.8</b>	<b>+1.1</b>	<b>+0.1</b>	<b>+0.8</b>		+\$128
44%	73%	55%	45%	50%	55%	48%	49%	EU	+\$124

Well balanced. Long, smooth bull. Granddam G108 is also the dam of Lot 5. Top 5% 400 Day Wt and Scrotal Size. Top 10% Supermarket and EU Indexes. Top 15% 600 Day Wt, Grass fed and Grain fed Indexes. Top 20% 200 Day Wt and IMF. Pigment 100/100. HOMOZYGOUS POLL.

PURCHASER:..... \$.....

# Acc. ALLENDALE

## Lot 40 - ALLENDALE GILCHRIST N057 (TW) (PP)

**N057**

**BIRTH DATE - 03/05/2017**

SHF WONDER M326 W18 ET (P)  
 REMITALL-WEST GAME DAY ET 74Y (IMP CAN) (P)  
 REMITALL MARVEL 78T (IMP CAN) (P)

TYCOLAH GOLD RUSH (S)  
 ALLENDALE BARRISTER F107 (AI) (P)  
 ALLENDALE SILVIA A37 (AI) (ET) (P)

**SIRE - ALLENDALE CHISEL L8 (ET) (S)**  
 SOUTH BUKALONG SHANNON 40 (PP)  
 ALLENDALE CORA D47 (AI) (P)  
 ALLENDALE CORA B7 (AI) (P)

**DAM - ALLENDALE FLORRIE Z170 (P)**  
 ALLENDALE NATIONAL W168 (PP)  
 ALLENDALE FLORRIE Z10 (AI) (P)  
 ALLENDALE FLORRIE W160 (AI) (P)

DECEMBER 2018 GROUP BREEDPLAN EBVS								\$ INDEX VALUE	
CE DIR	CE DTRS	GL	BWT	200W	400W	600W	MCW	SUP MKT	
<b>-7.7</b>	<b>-1.6</b>	<b>-0.7</b>	<b>+5.9</b>	<b>+36</b>	<b>+60</b>	<b>+77</b>	<b>+64</b>		+\$79
39%	31%	51%	69%	62%	61%	63%	56%	GRASS FED	+\$75
MILK	SS	CWT	EMA	RIB	RUMP	RBV%	IMF%	GRAIN FED	
<b>+13</b>	<b>+3.9</b>	<b>+43</b>	<b>+3.1</b>	<b>+0.6</b>	<b>+0.7</b>	<b>+0.4</b>	<b>+0.4</b>		+\$91
43%	62%	50%	38%	43%	46%	40%	43%	EU	+\$91

Deep, quality bull. Dam has had sons sell to \$11,000 to CL Kilsby and Co. Top 1% Scrotal Size. Pigment 98/100. HOMOZYGOUS POLL.

PURCHASER:..... \$.....

# ALLENDALE / DAYS WHITEFACE 2019

## Acc. ALLENDALE

### Lot 41 - ALLENDALE GALLAGHER N046 (AI) (P)

**N046**

**BIRTH DATE - 28/04/2017**

QUAMBY PLAINS STOCKMASTER Y118 (P)  
WIRRUNA FLETCHER F214 (P)  
WIRRUNA LAST DAY B16 (AI) (H#)

ALLENDALE VAGABOND A74 (AI) (P)  
MERRINA A74 REACTOR E148 (P)  
MERRINA T81 FANTASY A33 (AI) (P)

**SIRE - WIRRUNA KATNOOK K74 (AI) (P)**

WIRRUNA DAFFY D1 (P)  
WIRRUNA VICTORIA G7 (AI) (P)  
WIRRUNA VICTORIA E112 (AI) (ET) (P)

**DAM - ALLENDALE FANCY J63 (P)**

ALLENDALE LANDLORD 3 (AI) (P)  
ALLENDALE FANCY Y19 (AI) (P)  
ALLENDALE FANCY U84 (AI) (P)

DECEMBER 2018 GROUP BREEDPLAN EBVS							
CE DIR	CE DTRS	GL	BWT	200W	400W	600W	MCW
<b>-4.8</b>	<b>+1.0</b>	<b>-4.5</b>	<b>+7.1</b>	<b>+42</b>	<b>+59</b>	<b>+89</b>	<b>+79</b>
45%	34%	74%	73%	68%	69%	71%	63%
MILK	SS	CWT	EMA	RIB	RUMP	RBV%	IMF%
<b>+19</b>	<b>+2.1</b>	<b>+59</b>	<b>+6.1</b>	<b>+0.3</b>	<b>-0.2</b>	<b>+2.4</b>	<b>+0.7</b>
46%	77%	58%	50%	54%	58%	52%	53%

\$ INDEX VALUE	
SUP MKT	+\$100
GRASS FED	+\$95
GRAIN FED	+\$116
EU	+\$115

Muscular, strong headed bull from a heavy milking dam. J63 weaned our best heifer calf this year. Top 5% GL, 200 day Wt and EMA. Top 20% Milk, IMF, Grain fed and EU Indexes. Pigment 100/100.

PURCHASER:..... \$ .....

## Acc. ALLENDALE

### Lot 42 - ALLENDALE INFORMANT N020 (AI) (TW) (S)

**N020**

**BIRTH DATE - 20/04/2017**

QUAMBY PLAINS STOCKMASTER Y118 (P)  
WIRRUNA FLETCHER F214 (P)  
WIRRUNA LAST DAY B16 (AI) (H#)

ALLENDALE YALLARO 2 (AI) (TW) (P)  
ALLENDALE CHISEL G161 (P)  
ALLENDALE CORA D47 (AI) (P)

**SIRE - WIRRUNA KATNOOK K74 (AI) (P)**

WIRRUNA DAFFY D1 (P)  
WIRRUNA VICTORIA G7 (AI) (P)  
WIRRUNA VICTORIA E112 (AI) (ET) (P)

**DAM - ALLENDALE FANCY L38 (AI) (TW) (P)**

ALLENDALE YEMEN E39 (P)  
ALLENDALE FANCY G6 (P)  
ALLENDALE FANCY E2 (AI) (P)

DECEMBER 2018 GROUP BREEDPLAN EBVS							
CE DIR	CE DTRS	GL	BWT	200W	400W	600W	MCW
<b>-5.6</b>	<b>-0.9</b>	<b>-4.0</b>	<b>+7.9</b>	<b>+51</b>	<b>+69</b>	<b>+98</b>	<b>+86</b>
43%	32%	61%	68%	65%	66%	67%	59%
MILK	SS	CWT	EMA	RIB	RUMP	RBV%	IMF%
<b>+16</b>	<b>+3.2</b>	<b>+62</b>	<b>+5.2</b>	<b>+0.4</b>	<b>+0.2</b>	<b>+1.7</b>	<b>+0.9</b>
44%	74%	56%	48%	52%	56%	50%	52%

\$ INDEX VALUE	
SUP MKT	+\$107
GRASS FED	+\$101
GRAIN FED	+\$125
EU	+\$122

Panda eyed heifer's first calf expressing a lot of muscle. G6 is also the granddam of Lot 4 and 71. Top 1% 200 Day Wt. Top 5% GL, 400 Day Wt and SS. Top 10% 600 Day Wt, Carcase Wt and EMA. Top 15% IMF, Supermarket, Grainfed and EU Indexes. Top 20% Grassfed Index. Pigment 100/100.

PURCHASER:..... \$ .....

# Acc. ALLENDALE

**Lot 43 - ALLENDALE ICON N088 (AI) (TW) (P)**

**N088**

**BIRTH DATE - 18/05/2017**

QUAMBY PLAINS STOCKMASTER Y118 (P)  
 WIRRUNA FLETCHER F214 (P)  
 WIRRUNA LAST DAY B16 (AI) (H#)

ALLENDALE SUPERSTAR B28 (AI) (ET) (S)  
 ALLENDALE ADVANTAGE G106 (AI) (P)  
 ALLENDALE FANCY A301 (P)

**SIRE - WIRRUNA KATNOOK K74 (AI) (P)**

**DAM - ALLENDALE KATE J133 (P)**

WIRRUNA DAFFY D1 (P)  
 WIRRUNA VICTORIA G7 (AI) (P)  
 WIRRUNA VICTORIA E112 (AI) (ET) (P)

ALLENDALE YEMEN E39 (P)  
 ALLENDALE KATE G62 (P)  
 ABBERLEY KATE E2 (P)

DECEMBER 2018 GROUP BREEDPLAN EBVS								\$ INDEX VALUE	
CE DIR	CE DTRS	GL	BWT	200W	400W	600W	MCW	SUP MKT	+\$87
<b>-1.2</b>	<b>+1.1</b>	<b>-3.3</b>	<b>+4.7</b>	<b>+35</b>	<b>+51</b>	<b>+67</b>	<b>+50</b>	GRASS FED	+\$86
44%	33%	57%	72%	67%	67%	69%	62%	GRAIN FED	+\$109
MILK	SS	CWT	EMA	RIB	RUMP	RBV%	IMF%	EU	+\$102
<b>+16</b>	<b>+1.7</b>	<b>+49</b>	<b>+5.5</b>	<b>+0.4</b>	<b>+0.0</b>	<b>+1.8</b>	<b>+1.0</b>		
44%	75%	56%	48%	53%	57%	50%	51%		

Strong topped bull that will be suitable for heifers. Top 5% GL and EMA. Top 10% RBV and IMF. Pigment 100/100.

PURCHASER:..... \$.....

# Acc. ALLENDALE

**Lot 44 - ALLENDALE ILLUSION N076 (P)**

**N076**

**BIRTH DATE - 14/05/2017**

ALLENDALE ANZAC E114 (PP)  
 ALLENDALE COLLINGWOOD J29 (AI) (PP)  
 ALLENDALE BLUE MIST E13 (P)

WIRRUNA ABERCORN (AI) (P)  
 ALLENDALE YEMEN E39 (P)  
 ALLENDALE FANCY A158 (AI) (ET) (S)

**SIRE - ALLENDALE COOLABAH L42 (TW) (PP)**

**DAM - ALLENDALE MARLINE L24 (AI) (P)**

ALLENDALE WASHINGTON C77 (AI) (PP)  
 ABBERLEY KATE E3 (P)  
 ABBERLEY KATE (AI) (P)

ALLENDALE BULLS-EYE F38 (AI) (P)  
 ALLENDALE MARLINE J109 (P)  
 ALLENDALE MARLINE C233 (P)

DECEMBER 2018 GROUP BREEDPLAN EBVS								\$ INDEX VALUE	
CE DIR	CE DTRS	GL	BWT	200W	400W	600W	MCW	SUP MKT	+\$92
<b>+4.0</b>	<b>+2.3</b>	<b>-1.1</b>	<b>+3.4</b>	<b>+29</b>	<b>+48</b>	<b>+65</b>	<b>+61</b>	GRASS FED	+\$90
37%	29%	53%	70%	64%	65%	68%	59%	GRAIN FED	+\$107
MILK	SS	CWT	EMA	RIB	RUMP	RBV%	IMF%	EU	+\$105
<b>+17</b>	<b>+2.9</b>	<b>+44</b>	<b>+3.4</b>	<b>+0.7</b>	<b>+1.0</b>	<b>+0.1</b>	<b>+0.7</b>		
41%	75%	54%	44%	49%	54%	47%	45%		

Quality heifer's first calf, also suitable to use on heifers. Top 10% Scrotal Size Top 20% IMF. Pigment 100/100.

PURCHASER:..... \$.....

# ALLEDALE / DAYS WHITEFACE 2019

## Acc. DAYS WHITEFACE

### Lot 45 - DAYS INNOVATOR N055 (AI) (PP)

### N055

**BIRTH DATE - 10/05/2017**

ALLEDALE VAGABOND A74 (AI) (P)  
ALLEDALE WATERHOUSE D1 (PP)  
ALLEDALE MARLINE X185 (P)

HEATHERDALE JUNCTION W203 (P)  
TAS BALTIMORE A14 (AI) (P)  
WIRANYA BISETTA W24 (P)

**SIRE - DAYS EXECUTIVE K168 (PP)**

ALLEDALE TIPPERARY D13 (AI) (ET) (P)  
DAYS SILVIA G13 (AI) (P)  
DAYS SILVIA E30 (AI) (P)

**DAM - DAYS FANCY G148 (P)**

ALLEDALE NATIONAL W168 (PP)  
ALLEDALE FANCY A6 (AI) (ET) (P)  
ALLEDALE FANCY U5 (AI) (P)

DECEMBER 2018 GROUP BREEDPLAN EBVS							
CE DIR	CE DTRS	GL	BWT	200W	400W	600W	MCW
<b>+5.3</b>	<b>+4.4</b>	<b>-1.8</b>	<b>+4.9</b>	<b>+41</b>	<b>+72</b>	<b>+99</b>	<b>+79</b>
43%	36%	73%	73%	68%	68%	71%	63%
MILK	SS	CWT	EMA	RIB	RUMP	RBV%	IMF%
<b>+25</b>	<b>+2.7</b>	<b>+66</b>	<b>+6.0</b>	<b>+0.1</b>	<b>+0.4</b>	<b>+1.9</b>	<b>+0.6</b>
49%	77%	58%	50%	54%	58%	52%	53%

\$ INDEX VALUE	
SUP MKT	+\$129
GRASS FED	+\$124
GRAIN FED	+\$144
EU	+\$141

Homozygous Polled. Long, deep easy doing bull. Fancy U5 dam of Robin Hood bulls. Top 1% milk. Top 5% 400 and 600 day wt, EMA and all indexes. Pigment 100/100.

PURCHASER:..... \$.....

## Acc. DAYS WHITEFACE

### Lot 46 - DAYS FRANCHISE N126 (AI) (PP)

### N126

**BIRTH DATE - 30/05/2017**

SCHU-LAR ON TARGET 22S (IMP USA) (ET) (P)  
HYALITE ON TARGET 936 (P)  
HYALITE TS LASS 310 (P)

VALMA LANCELOT A61 (P)  
DAYS ARMSTRONG E312 (P)  
VALMA MERCHANTS MOONSHINE A23 (AI) (P)

**SIRE - R LEADER 6964 (IMP USA) (PP)**

MSU TCF REVOLUTION 4R (IMP USA) (PP)  
R MISS REVOLUTION 1009 (P)  
R MISS WRANGLER 3007 (P)

**DAM - DAYS MAVIS H12 (P)**

ALLEDALE VOLTAGE (AI) (P)  
ALLEDALE MAVIS C122 (P)  
ALLEDALE MAVIS A157 (P)

DECEMBER 2018 GROUP BREEDPLAN EBVS							
CE DIR	CE DTRS	GL	BWT	200W	400W	600W	MCW
<b>-5.5</b>	<b>-3.5</b>	<b>+5.1</b>	<b>+5.5</b>	<b>+43</b>	<b>+65</b>	<b>+87</b>	<b>+71</b>
43%	28%	74%	74%	69%	69%	72%	63%
MILK	SS	CWT	EMA	RIB	RUMP	RBV%	IMF%
<b>+17</b>	<b>+5.5</b>	<b>+56</b>	<b>+4.4</b>	<b>+1.1</b>	<b>+1.0</b>	<b>+0.5</b>	<b>+0.5</b>
50%	76%	58%	50%	54%	58%	50%	51%

\$ INDEX VALUE	
SUP MKT	+\$101
GRASS FED	+\$96
GRAIN FED	+\$115
EU	+\$115

Homozygous Polled. Long, smooth skinned muscular bull. Mavis H12 sons sold to \$13,000 to Edendale. Top 1% scrotal size. Top 5% 200 day wt. Pigment 98/95.

PURCHASER:..... \$.....



**Acc. DAYS WHITEFACE**

**Lot 47 - DAYS HAZARD N086 (AI) (P)**

**N086**

**BIRTH DATE - 17/05/2017**

TH 122 71I VICTOR 719T (IMP USA) (P)  
 TH 71U 719T MR HEREFORD 11X (IMP USA) (P)  
 TH 7N 45P RITA 71U (P)

ALLENDALE WATERHOUSE D1 (PP)  
 DAYS ROBIN HOOD H38 (AI) (ET) (PP)  
 ALLENDALE FANCY U5 (AI) (P)

**SIRE - TH 70R 11X MR HEREFORD 34Z (IMP USA) (P)**  
 TH 557E 57G LEGACY 44M (P)  
 TH 172J 57G QUEEN MAKER 70R (P)  
 SADDLE-VALLEY QUEEN MAKER 172J (P)

**DAM - DAYS TRILBY K179 (P)**  
 ALLENDALE TIPPERARY D13 (AI) (ET) (P)  
 DAYS TRILBY F115 (P)  
 ALLENDALE TRILBY D105 (AI) (P)

DECEMBER 2018 GROUP BREEDPLAN EBVS							
CE DIR	CE DTRS	GL	BWT	200W	400W	600W	MCW
<b>+1.8</b>	<b>+0.1</b>	<b>-0.6</b>	<b>+4.5</b>	<b>+38</b>	<b>+64</b>	<b>+89</b>	<b>+66</b>
48%	37%	74%	73%	69%	69%	71%	64%
MILK	SS	CWT	EMA	RIB	RUMP	RBV%	IMF%
<b>+20</b>	<b>+3.3</b>	<b>+62</b>	<b>+5.5</b>	<b>+0.3</b>	<b>+0.8</b>	<b>+1.3</b>	<b>+0.1</b>
52%	77%	59%	52%	56%	59%	53%	54%

\$ INDEX VALUE	
SUP MKT	+\$112
GRASS FED	+\$107
GRAIN FED	+\$120
EU	+\$123

Attractive, strong topped Mr Hereford 34Z son. K179's first son sold for \$12,000 to Coryule. Top 5% scrotal size and EMA. Top 10% supermarket index. Pigment 100/100.

PURCHASER:..... \$.....



# ALLEDALE / DAYS WHITEFACE 2019

## Acc. DAYS WHITEFACE

Lot 48 - DAYS FORTITUDE N095 (AI) (P)

N095

BIRTH DATE - 20/05/2017

SCHU-LAR ON TARGET 22S (IMP USA) (ET) (P)  
HYALITE ON TARGET 936 (P)  
HYALITE TS LASS 310 (P)

SIRE - R LEADER 6964 (IMP USA) (PP)

MSU TCF REVOLUTION 4R (IMP USA) (PP)  
R MISS REVOLUTION 1009 (P)  
R MISS WRANGLER 3007 (P)

SOUTH BUKALONG WALKER 6 (AI) (P)  
SOUTH BUKALONG WALLACE 2 (P)  
SOUTH BUKALONG VICTORIA 152 (P)

DAM - DAYS FANCY H28 (AI) (ET) (P)

ALLEDALE NATIONAL W168 (PP)  
ALLEDALE FANCY A7 (AI) (ET) (P)  
ALLEDALE FANCY U5 (AI) (P)

DECEMBER 2018 GROUP BREEDPLAN EBVS							
CE DIR	CE DTRS	GL	BWT	200W	400W	600W	MCW
<b>+6.5</b>	<b>+5.0</b>	<b>-0.4</b>	<b>+2.4</b>	<b>+38</b>	<b>+63</b>	<b>+83</b>	<b>+66</b>
48%	35%	75%	74%	69%	70%	72%	63%
MILK	SS	CWT	EMA	RIB	RUMP	RBV%	IMF%
<b>+20</b>	<b>+3.6</b>	<b>+64</b>	<b>+5.3</b>	<b>+1.7</b>	<b>+2.3</b>	<b>+0.5</b>	<b>+1.1</b>
51%	77%	59%	52%	56%	59%	52%	53%

\$ INDEX VALUE	
SUP MKT	+\$130
GRASS FED	+\$129
GRAIN FED	+\$153
EU	+\$144

Long, dark coloured bull with a great pedigree and balanced figures. Fancy H28 is an ET sister to Patrick H37 (\$27,000 to Quamby and Chester) and Fancy H31 who is dam of lots 11 and 24-29. Top 5% scrotal and all indexes. Top 10% carcass wt, EMA and IMF. Pigment 100/100.

PURCHASER:..... \$.....

## Acc. DAYS WHITEFACE

Lot 49 - DAYS INTERPOL N080 (PP)

N080

BIRTH DATE - 15/05/2017

ALLEDALE VAGABOND A74 (AI) (P)  
ALLEDALE WATERHOUSE D1 (PP)  
ALLEDALE MARLINE X185 (P)

SIRE - DAYS ROBIN HOOD H38 (AI) (ET) (PP)

ALLEDALE KENWORTH 2 (P)  
ALLEDALE FANCY U5 (AI) (P)  
ALLEDALE FANCY 248 (AI) (P)

ALLEDALE WATERHOUSE D1 (PP)  
DAYS CALIBRE G74 (PP)  
ALLEDALE DAWN C62 (AI) (P)

DAM - DAYS BLISSFUL K43 (AI) (P)

DAYS WHISKEY E49 (TW) (S)  
DAYS BLISSFUL G111 (P)  
DAYS BLISSFUL E34 (AI) (P)

DECEMBER 2018 GROUP BREEDPLAN EBVS							
CE DIR	CE DTRS	GL	BWT	200W	400W	600W	MCW
<b>+4.9</b>	<b>+7.5</b>	<b>-3.1</b>	<b>+4.1</b>	<b>+36</b>	<b>+62</b>	<b>+88</b>	<b>+95</b>
54%	45%	69%	76%	71%	72%	74%	68%
MILK	SS	CWT	EMA	RIB	RUMP	RBV%	IMF%
<b>+17</b>	<b>+3.2</b>	<b>+60</b>	<b>+5.5</b>	<b>-0.3</b>	<b>+0.6</b>	<b>+1.9</b>	<b>+0.3</b>
57%	79%	65%	59%	62%	65%	58%	63%

\$ INDEX VALUE	
SUP MKT	+\$117
GRASS FED	+\$112
GRAIN FED	+\$121
EU	+\$130

Homozygous Polled. Big bull with a very good hindquarter. Top 5% calving ease daughters, GL, scrotal size and EMA. Top 10% supermarket, grassfed and EU indexes. Pigment 100/100.

PURCHASER:..... \$.....

**Acc. DAYS WHITEFACE**

**Lot 50 - DAYS ILLUMINATED N118 (PP)**

**N118**

**BIRTH DATE - 26/05/2017**

ALLENDALE VAGABOND A74 (AI) (P)  
 ALLENDALE WATERHOUSE D1 (PP)  
 ALLENDALE MARLINE X185 (P)  
**SIRE - DAYS ROBIN HOOD H38 (AI) (ET) (PP)**  
 ALLENDALE KENWORTH 2 (P)  
 ALLENDALE FANCY U5 (AI) (P)  
 ALLENDALE FANCY 248 (AI) (P)

ALLENDALE WATERHOUSE D1 (PP)  
 DAYS CALIBRE G74 (PP)  
 ALLENDALE DAWN C62 (AI) (P)  
**DAM - DAYS DAWN K16 (AI) (ET) (P)**  
 ALLENDALE NATIONAL W168 (PP)  
 ALLENDALE DAWN Z21 (AI) (P)  
 ALLENDALE DAWN V54 (AI) (P)

DECEMBER 2018 GROUP BREEDPLAN EBVS							
CE DIR	CE DTRS	GL	BWT	200W	400W	600W	MCW
<b>-0.4</b>	<b>+5.5</b>	<b>-1.1</b>	<b>+6.7</b>	<b>+39</b>	<b>+70</b>	<b>+102</b>	<b>+126</b>
55%	46%	67%	76%	71%	72%	74%	68%
MILK	SS	CWT	EMA	RIB	RUMP	RBY%	IMF%
<b>+11</b>	<b>+4.6</b>	<b>+61</b>	<b>+5.7</b>	<b>+0.4</b>	<b>+2.0</b>	<b>+1.3</b>	<b>+0.3</b>
58%	79%	65%	59%	62%	65%	59%	63%

\$ INDEX VALUE	
SUP MKT	+\$119
GRASS FED	+\$112
GRAIN FED	+\$119
EU	+\$131

Homozygous Polled. Long, attractive sire. Dawn Z21 is dam of the Wizard bulls, seven averaging \$17,142. He also has Fancy U5 and Dawn C62 in his pedigree. Top 1% scrotal size. Top 5% 400 and 600 day wt and EMA. Top 10% supermarket, grassfed and EU indexes. Pigment 100/100.

PURCHASER: ..... \$.....



# ALLEDALE / DAYS WHITEFACE 2019

## Acc. DAYS WHITEFACE

### Lot 51 - DAYS ILLINGWORTH N103 (AI) (TW) (PP)

### N103

**BIRTH DATE - 22/05/2017**

SCHU-LAR ON TARGET 22S (IMP USA) (ET) (P)  
HYALITE ON TARGET 936 (P)  
HYALITE TS LASS 310 (P)

ALLEDALE WATERHOUSE D1 (PP)  
DAYS CALIBRE G74 (PP)  
ALLEDALE DAWN C62 (AI) (P)

**SIRE - R LEADER 6964 (IMP USA) (PP)**

MSU TCF REVOLUTION 4R (IMP USA) (PP)  
R MISS REVOLUTION 1009 (P)  
R MISS WRANGLER 3007 (P)

**DAM - DAYS DAWN K3 (AI) (ET) (P)**

ALLEDALE NATIONAL W168 (PP)  
ALLEDALE DAWN Z21 (AI) (P)  
ALLEDALE DAWN V54 (AI) (P)

DECEMBER 2018 GROUP BREEDPLAN EBVS							
CE DIR	CE DTRS	GL	BWT	200W	400W	600W	MCW
<b>+4.4</b>	<b>+5.1</b>	<b>+3.0</b>	<b>+3.1</b>	<b>+39</b>	<b>+66</b>	<b>+86</b>	<b>+79</b>
47%	33%	63%	72%	66%	66%	66%	56%
MILK	SS	CWT	EMA	RIB	RUMP	RBV%	IMF%
<b>+12</b>	<b>+3.6</b>	<b>+65</b>	<b>+5.7</b>	<b>+1.6</b>	<b>+2.0</b>	<b>+0.2</b>	<b>+0.7</b>
50%	65%	54%	45%	46%	48%	43%	47%

\$ INDEX VALUE	
SUP MKT	+\$122
GRASS FED	+\$119
GRAIN FED	+\$135
EU	+\$134

Homozygous Polled. Long smooth skinned grandson of Dawn Z21 dam of the Wizard bulls. Top 5% scrotal size, EMA, supermarket, grassfed and EU indexes. Top 10% 400 day wt, carcass wt and grainfed index. Pigment 100/100.

PURCHASER:..... \$.....

## Acc. DAYS WHITEFACE

### Lot 52 - DAYS N068 (AI) (PP)

### N068

**BIRTH DATE - 13/05/2017**

QUAMBY PLAINS STOCKMASTER Y118 (P)  
WIRRUNA FLETCHER F214 (P)  
WIRRUNA LAST DAY B16 (AI) (H#)

ALLEDALE WATERHOUSE D1 (PP)  
DAYS ROBIN HOOD H38 (AI) (ET) (PP)  
ALLEDALE FANCY U5 (AI) (P)

**SIRE - WIRRUNA KATNOOK K74 (AI) (P)**

WIRRUNA DAFFY D1 (P)  
WIRRUNA VICTORIA G7 (AI) (P)  
WIRRUNA VICTORIA E112 (AI) (ET) (P)

**DAM - DAYS HARMONY K49 (AI) (P)**

ALLEDALE NATIONAL W168 (PP)  
DAYS HARMONY H24 (AI) (ET) (P)  
ALLEDALE HARMONY S37 (P)

DECEMBER 2018 GROUP BREEDPLAN EBVS							
CE DIR	CE DTRS	GL	BWT	200W	400W	600W	MCW
<b>-0.1</b>	<b>+2.9</b>	<b>-3.9</b>	<b>+4.8</b>	<b>+41</b>	<b>+64</b>	<b>+89</b>	<b>+77</b>
47%	36%	76%	73%	67%	67%	68%	60%
MILK	SS	CWT	EMA	RIB	RUMP	RBV%	IMF%
<b>+17</b>	<b>+3.0</b>	<b>+64</b>	<b>+6.5</b>	<b>+0.2</b>	<b>+0.4</b>	<b>+1.9</b>	<b>+1.2</b>
48%	66%	57%	45%	54%	58%	50%	56%

\$ INDEX VALUE	
SUP MKT	+\$117
GRASS FED	+\$114
GRAIN FED	+\$141
EU	+\$133

Homozygous Polled. Clean fronted, good topped Katnook son. Top 1% EMA. Top 5% gestation length. Top 10% 200 day wt, scrotal size, carcass wt, IMF and all indexes. Pigment 100/100.

PURCHASER:..... \$.....

**Acc. ALLENDALE**

**Lot 53 - ALLENDALE IDEAL N124 (PP)**

**N124**

**BIRTH DATE - 03/06/2017**

ALLENDALE WATERHOUSE D1 (PP)  
 DAYS ROBIN HOOD H38 (AI) (ET) (PP)  
 ALLENDALE FANCY U5 (AI) (P)

SHF WONDER M326 W18 ET (P)  
 REMITALL-WEST GAME DAY ET 74Y (IMP CAN) (P)  
 REMITALL MARVEL 78T (IMP CAN) (P)

**SIRE - ALLENDALE CHISEL L1 (ET) (PP)**  
 SOUTH BUKALONG SHANNON 40 (PP)  
 ALLENDALE CORA D47 (AI) (P)  
 ALLENDALE CORA B7 (AI) (P)

**DAM - ALLENDALE FANCY L21 (AI) (P)**  
 ALLENDALE ADVANTAGE E14 (AI) (P)  
 ALLENDALE FANCY H55 (AI) (P)  
 ALLENDALE FANCY B196 (P)

DECEMBER 2018 GROUP BREEDPLAN EBVS							
CE DIR	CE DTRS	GL	BWT	200W	400W	600W	MCW
<b>+1.8</b>	<b>+2.4</b>	<b>-2.5</b>	<b>+3.9</b>	<b>+36</b>	<b>+69</b>	<b>+86</b>	<b>+73</b>
41%	32%	57%	69%	65%	66%	69%	61%
MILK	SS	CWT	EMA	RIB	RUMP	RBV%	IMF%
<b>+22</b>	<b>+3.5</b>	<b>+65</b>	<b>+6.2</b>	<b>+1.3</b>	<b>+2.3</b>	<b>+0.7</b>	<b>+0.7</b>
43%	75%	56%	48%	52%	56%	50%	50%

\$ INDEX VALUE	
SUP MKT	+\$117
GRASS FED	+\$114
GRAIN FED	+\$132
EU	+\$127

Well balanced, good hindquarterd heifer's first calf. Chisel L1 sold to Phil Haling at Dubbo for \$16,000. Top 5% - 400 Day Wt, Milk, SS and EMA. Top 10% GL, Rib and Rump Fat, All Indexes. Top 20% IMF. Pigment 100/100. HOMOZYGOUS POLL.

PURCHASER:..... \$.....



# ALLEDALE / DAYS WHITEFACE 2019

## Acc. ALLENDALE

### Lot 54 - ALLENDALE INTERNATIONAL N103 (AI) (PP)

**N103**

**BIRTH DATE - 22/05/2017**

ALLEDALE VAGABOND A74 (AI) (P)  
ALLEDALE WATERHOUSE D1 (PP)  
ALLEDALE MARLINE X185 (P)

OKAWA COMMODORE 020076 (IMP NZL) (P)  
ALLEDALE WASHINGTON D57 (AI) (P)  
ALLEDALE FANCY Z59 (P)

**SIRE - ALLENDALE ANZAC K4 (ET) (PP)**

ALLEDALE NATIONAL W168 (PP)  
ALLEDALE DAWN B22 (AI) (ET) (P)  
ALLEDALE DAWN T60 (AI) (P)

**DAM - ALLENDALE DAISY H30 (AI) (P)**

ALLEDALE VAGABOND A74 (AI) (P)  
ALLEDALE DAISY C256 (P)  
ALLEDALE DAISY R148 (AI) (P)

DECEMBER 2018 GROUP BREEDPLAN EBVS								\$ INDEX VALUE	
CE DIR	CE DTRS	GL	BWT	200W	400W	600W	MCW	SUP MKT	
<b>-0.1</b>	<b>+3.4</b>	<b>+1.1</b>	<b>+6.4</b>	<b>+41</b>	<b>+71</b>	<b>+97</b>	<b>+98</b>		+\$116
47%	39%	76%	74%	69%	69%	72%	65%	GRASS FED	+\$109
MILK	SS	CWT	EMA	RIB	RUMP	RB%Y	IMF%	GRAIN FED	
<b>+18</b>	<b>+4.4</b>	<b>+63</b>	<b>+5.8</b>	<b>+0.5</b>	<b>+1.0</b>	<b>+2.0</b>	<b>-0.3</b>		+\$112
51%	77%	60%	52%	56%	60%	54%	55%	EU	+\$128

Deep, Long bodied bull from a good producing cow. Top 1% Scrotal Size. Top 5% 400 Day Wt, EMA and RBY. Top 10% 200 and 600 Day Wt, CWT, Supermarket, Grass fed and EU Indexes. Pigment 100/100. HOMOZYGOUS POLL.

PURCHASER:..... \$.....

## Acc. ALLENDALE

### Lot 55 - ALLENDALE INGLEWOOD N110 (PP)

**N110**

**BIRTH DATE - 25/05/2017**

ALLEDALE WATERHOUSE D1 (PP)  
DAYS ROBIN HOOD H38 (AI) (ET) (PP)  
ALLEDALE FANCY U5 (AI) (P)

GUILFORD EMPEROR E10 (AI) (P)  
GUILFORD HARVESTER H63 (P)  
GUILFORD VANITY Y84 (P)

**SIRE - ALLENDALE CHISEL L1 (ET) (PP)**

SOUTH BUKALONG SHANNON 40 (PP)  
ALLEDALE CORA D47 (AI) (P)  
ALLEDALE CORA B7 (AI) (P)

**DAM - ALLENDALE CORA L120 (P)**

ALLEDALE BUSHMAN F119 (P)  
ALLEDALE CORA H148 (P)  
ALLEDALE CORA D47 (AI) (P)

DECEMBER 2018 GROUP BREEDPLAN EBVS								\$ INDEX VALUE	
CE DIR	CE DTRS	GL	BWT	200W	400W	600W	MCW	SUP MKT	
<b>+1.2</b>	<b>+1.4</b>	<b>-1.9</b>	<b>+5.1</b>	<b>+42</b>	<b>+71</b>	<b>+95</b>	<b>+94</b>		+\$107
40%	31%	50%	71%	65%	66%	70%	62%	GRASS FED	+\$101
MILK	SS	CWT	EMA	RIB	RUMP	RB%Y	IMF%	GRAIN FED	
<b>+15</b>	<b>+2.7</b>	<b>+62</b>	<b>+3.6</b>	<b>+0.6</b>	<b>+1.6</b>	<b>+0.5</b>	<b>-0.1</b>		+\$103
42%	76%	56%	48%	52%	56%	50%	50%	EU	+\$114

Long, well balanced heifer's first calf. Top 5% 200 and 400 Day Wt. Top 10% 600 Day Wt and CWT. Top 15% GL, SS, Rump Fat and Supermarket Index. Top 20% Grass fed and EU Indexes. Pigment 100/100. HOMOZYGOUS POLL.

PURCHASER:..... \$.....

**Acc. ALLENDALE**

**Lot 56 - ALLENDALE H-BOMB N143 (PP)**

**N143**

**BIRTH DATE - 11/06/2017**

ALLEDALE VAGABOND A74 (AI) (P)  
 ALLENDALE WATERHOUSE D1 (PP)  
 ALLENDALE MARLINE X185 (P)  
**SIRE - ALLENDALE WASHINGTON G82 (ET) (P)**  
 ALLENDALE OVERTON (P)  
 ALLENDALE FANCY Z59 (P)  
 ALLENDALE FANCY V35 (P)

ALLEDALE YEMEN E39 (P)  
 ALLENDALE COLLINGWOOD G20 (AI) (P)  
 ALLENDALE BLUE MIST E13 (P)  
**DAM - ALLENDALE FANCY K1 (P)**  
 ALLENDALE UNRIVALLED (TW) (P)  
 ALLENDALE FANCY C36 (P)  
 ALLENDALE FANCY Y19 (AI) (P)

DECEMBER 2018 GROUP BREEDPLAN EBVS							
CE DIR	CE DTRS	GL	BWT	200W	400W	600W	MCW
<b>-6.2</b>	<b>-0.6</b>	<b>-1.6</b>	<b>+8.6</b>	<b>+39</b>	<b>+60</b>	<b>+93</b>	<b>+100</b>
46%	38%	55%	73%	67%	68%	71%	64%
MILK	SS	CWT	EMA	RIB	RUMP	RBY%	IMF%
<b>+20</b>	<b>+2.3</b>	<b>+44</b>	<b>+2.2</b>	<b>+1.4</b>	<b>+2.3</b>	<b>-1.3</b>	<b>+1.5</b>
51%	77%	58%	50%	54%	58%	52%	52%

\$ INDEX VALUE	
SUP MKT	+\$87
GRASS FED	+\$81
GRAIN FED	+\$106
EU	+\$94

A big, deep bodied bull. Top 5% Rump fat & IMF. Top 10% Rib fat. Top 15% 200 & 600 Day Wt, Milk. Top 20% GL. Pigment 100/100. HOMOZYGOUS POLL.

PURCHASER: ..... \$.....



# ALLENDALE / DAYS WHITEFACE 2019

## Acc. ALLENDALE

### Lot 57 - ALLENDALE IMPACT N090 (P)

**N090**

**BIRTH DATE - 18/05/2017**

ALLENDALE WATERHOUSE D1 (PP)  
DAYS ROBIN HOOD H38 (AI) (ET) (PP)  
ALLENDALE FANCY U5 (AI) (P)

**SIRE - ALLENDALE CHISEL L1 (ET) (PP)**

SOUTH BUKALONG SHANNON 40 (PP)  
ALLENDALE CORA D47 (AI) (P)  
ALLENDALE CORA B7 (AI) (P)

DEBARRY CALGARY C58 (P)  
ALLENDALE ANZAC H187 (ET) (P)  
ALLENDALE DAWN B22 (AI) (ET) (P)

**DAM - ALLENDALE MARLINE L119 (AI) (P)**

ALLENDALE PUCKAPUNYAL C235 (P)  
ALLENDALE MARLINE F5 (P)  
ALLENDALE MARLINE B90 (AI) (TW) (P)

DECEMBER 2018 GROUP BREEDPLAN EBVS							
CE DIR	CE DTRS	GL	BWT	200W	400W	600W	MCW
<b>-4.1</b>	<b>+1.1</b>	<b>+0.1</b>	<b>+7.1</b>	<b>+44</b>	<b>+67</b>	<b>+96</b>	<b>+103</b>
41%	32%	53%	71%	65%	66%	69%	61%
MILK	SS	CWT	EMA	RIB	RUMP	RB%Y	IMF%
<b>+12</b>	<b>+3.0</b>	<b>+55</b>	<b>+3.1</b>	<b>+0.6</b>	<b>+1.6</b>	<b>-0.1</b>	<b>+0.9</b>
42%	75%	56%	47%	52%	56%	49%	49%

\$ INDEX VALUE	
SUP MKT	+\$96
GRASS FED	+\$89
GRAIN FED	+\$104
EU	+\$103

Large Framed heifer's first calf. Top 5% 200 Day Wt. Top 10% 400 and 600 Day Wt and SS. Top 15% Rump fat and IMF. Pigment 100/100.

PURCHASER:..... \$.....

## Acc. ALLENDALE

### Lot 58 - ALLENDALE INTENSE N048 (AI) (PP)

**N048**

**BIRTH DATE - 29/04/2017**

ALLENDALE VAGABOND A74 (AI) (P)  
ALLENDALE WATERHOUSE D1 (PP)  
ALLENDALE MARLINE X185 (P)

**SIRE - ALLENDALE ANZAC K4 (ET) (PP)**

ALLENDALE NATIONAL W168 (PP)  
ALLENDALE DAWN B22 (AI) (ET) (P)  
ALLENDALE DAWN T60 (AI) (P)

KOANUI ROCKET 0219 (IMP NZL) (P)  
MORGANVALE FEVOLA (AI) (P)  
MORGANVALE STATUESQUE C215 (P)

**DAM - ALLENDALE FANCY J54 (P)**

WIRRUNA ABERCORN (AI) (P)  
ALLENDALE FANCY F9 (AI) (ET) (P)  
ALLENDALE FANCY U64 (AI) (P)

DECEMBER 2018 GROUP BREEDPLAN EBVS							
CE DIR	CE DTRS	GL	BWT	200W	400W	600W	MCW
<b>+8.5</b>	<b>+6.9</b>	<b>-0.8</b>	<b>+2.8</b>	<b>+32</b>	<b>+58</b>	<b>+79</b>	<b>+95</b>
45%	37%	73%	73%	68%	68%	71%	63%
MILK	SS	CWT	EMA	RIB	RUMP	RB%Y	IMF%
<b>+21</b>	<b>+3.4</b>	<b>+52</b>	<b>+2.3</b>	<b>+0.3</b>	<b>+0.7</b>	<b>-0.1</b>	<b>+0.2</b>
48%	76%	58%	50%	54%	58%	51%	52%

\$ INDEX VALUE	
SUP MKT	+\$99
GRASS FED	+\$94
GRAIN FED	+\$97
EU	+\$108

Deep, good skinned bull, suitable to use on heifers. Top 5% SS. Top 10% CE and Milk. Top 20% Birth Wt. Pigment 100/100. HOMOZYGOUS POLL.

PURCHASER:..... \$.....



# Acc. ALLENDALE

**Lot 59 - ALLENDALE FIREPOWER N136 (S)**

**N136**

**BIRTH DATE - 09/06/2017**

ALLENDALE SUPERSTAR B28 (AI) (ET) (S)  
 ALLENDALE YALLAROI 2 (AI) (TW) (P)  
 ALLENDALE FANCY A181 (AI) (P)  
**SIRE - ALLENDALE CHISEL G161 (P)**  
 SOUTH BUKALONG SHANNON 40 (PP)  
 ALLENDALE CORA D47 (AI) (P)  
 ALLENDALE CORA B7 (AI) (P)

WIRRUNA ABERCORN (AI) (P)  
 ALLENDALE YEMEN E39 (P)  
 ALLENDALE FANCY A158 (AI) (ET) (S)  
**DAM - ALLENDALE FANCY G21 (AI) (P)**  
 ALLENDALE A88 (P)  
 ALLENDALE FANCY E9 (P)  
 ALLENDALE FANCY B115 (P)

DECEMBER 2018 GROUP BREEDPLAN EBVS							
CE DIR	CE DTRS	GL	BWT	200W	400W	600W	MCW
<b>-5.0</b>	<b>+0.3</b>	<b>-2.4</b>	<b>+6.4</b>	<b>+43</b>	<b>+67</b>	<b>+91</b>	<b>+92</b>
44%	34%	59%	73%	68%	68%	71%	63%
MILK	SS	CWT	EMA	RIB	RUMP	RBY%	IMF%
<b>+12</b>	<b>+4.4</b>	<b>+57</b>	<b>+2.7</b>	<b>+0.1</b>	<b>+0.0</b>	<b>+0.7</b>	<b>+0.1</b>
49%	76%	58%	49%	54%	58%	52%	52%

\$ INDEX VALUE	
SUP MKT	+\$93
GRASS FED	+\$86
GRAIN FED	+\$96
EU	+\$105

Big, Long bull who is a full brother to Firepower K42 who sold for \$30,000 at Dubbo to Jacana. Top 1% SS. Top 5% 200 Day Wt. Top 10% GL and 400 Day Wt. Top 15% 600 Day Wt. Pigment 100/100.

PURCHASER:..... \$.....

# Acc. ALLENDALE

**Lot 60 - ALLENDALE INFERNO N073 (P)**

**N073**

**BIRTH DATE - 11/05/2017**

ALLENDALE WATERHOUSE D1 (PP)  
 DAYS ROBIN HOOD H38 (AI) (ET) (PP)  
 ALLENDALE FANCY U5 (AI) (P)  
**SIRE - ALLENDALE CHISEL L1 (ET) (PP)**  
 SOUTH BUKALONG SHANNON 40 (PP)  
 ALLENDALE CORA D47 (AI) (P)  
 ALLENDALE CORA B7 (AI) (P)

GUILFORD EMPEROR E10 (AI) (P)  
 GUILFORD HARVESTER H63 (P)  
 GUILFORD VANITY Y84 (P)  
**DAM - ALLENDALE MARLINE L52 (P)**  
 HARVIE TAILOR MADE ET 7W (IMP CAN) (AI) (P)  
 ALLENDALE MARLINE H1 (AI) (PP)  
 ALLENDALE MARLINE E60 (P)

DECEMBER 2018 GROUP BREEDPLAN EBVS							
CE DIR	CE DTRS	GL	BWT	200W	400W	600W	MCW
<b>-1.2</b>	<b>-1.0</b>	<b>-2.6</b>	<b>5.0</b>	<b>+42</b>	<b>+68</b>	<b>+97</b>	<b>+90</b>
40%	30%	46%	70%	65%	66%	69%	61%
MILK	SS	CWT	EMA	RIB	RUMP	RBY%	IMF%
<b>+17</b>	<b>+2.5</b>	<b>+66</b>	<b>+4.4</b>	<b>+0.3</b>	<b>1.0</b>	<b>+1.1</b>	<b>+0.3</b>
41%	75%	55%	47%	52%	56%	49%	49%

\$ INDEX VALUE	
SUP MKT	+\$107
GRASS FED	+\$101
GRAIN FED	+\$110
EU	+\$115

Long. Tall heifer's first calf. Granddam H1 is a donor. Top 5% 200 Day Wt and CWT. Top 10% GL, 400 and 600 Day Wt. Top 15% EMA and Supermarket Index. Top 20% SS, Grassfed and EU Indexes. Pigment 100/100.

PURCHASER:..... \$.....

# ALLENDALE / DAYS WHITEFACE 2019

## Acc. DAYS WHITEFACE

### Lot 61 - DAYS HERITAGE N081 (AI) (P)

### N081

**BIRTH DATE - 16/05/2017**

QUAMBY PLAINS STOCKMASTER Y118 (P)  
WIRRUNA FLETCHER F214 (P)  
WIRRUNA LAST DAY B16 (AI) (H#)

MOUNT DIFFICULT FELLIS Y12 (AI) (P)  
WIRRUNA ABERCORN (AI) (P)  
WIRRUNA GOLDEN VANITY R94 (AI) (P)

**SIRE - WIRRUNA KATNOOK K74 (AI) (P)**

WIRRUNA DAFFY D1 (P)  
WIRRUNA VICTORIA G7 (AI) (P)  
WIRRUNA VICTORIA E112 (AI) (ET) (P)

**DAM - DAYS FANCY E111 (P)**

JAMENA EX VIEW (P)  
ALLENDALE FANCY A230 (P)  
ALLENDALE FANCY W183 (P)

DECEMBER 2018 GROUP BREEDPLAN EBVS							
CE DIR	CE DTRS	GL	BWT	200W	400W	600W	MCW
<b>-2.1</b>	<b>+0.1</b>	<b>-3.2</b>	<b>+5.9</b>	<b>+37</b>	<b>+56</b>	<b>+82</b>	<b>+72</b>
48%	38%	76%	75%	70%	70%	73%	65%
MILK	SS	CWT	EMA	RIB	RUMP	RBV%	IMF%
<b>+17</b>	<b>+4.4</b>	<b>+57</b>	<b>+6.4</b>	<b>+0.4</b>	<b>+0.0</b>	<b>+2.3</b>	<b>+0.7</b>
51%	78%	60%	52%	56%	60%	54%	55%

\$ INDEX VALUE	
SUP MKT	+\$108
GRASS FED	+\$105
GRAIN FED	+\$129
EU	+\$128

Muscular, good coloured bull. Maternal brother sold for \$9,000 to Lynwood Pastoral last year. Top 1% scrotal size. Top 5% gestation length, Retail Beef Yield and EMA. Top 10% EU index. Pigment 100/100.

PURCHASER:..... \$.....

## Acc. DAYS WHITEFACE

### Lot 62 - DAYS INVESTIGATOR N048 (AI) (PP)

### N048

**BIRTH DATE - 09/05/2017**

SOUTH BUKALONG WALLACE 2 (P)  
DAYS PATRICK H37 (AI) (ET) (S)  
ALLENDALE FANCY A7 (AI) (ET) (P)

TH 71U 719T MR HEREFORD 11X (IMP USA) (P)  
TH 70R 11X MR HEREFORD 34Z (IMP USA) (P)  
TH 172J 57G QUEEN MAKER 70R (P)

**SIRE - DAYS FERRARI K128 (PP)**

ALLENDALE WATERHOUSE D1 (PP)  
DAYS GLADIOLA H184 (P)  
ALLENDALE GLADIOLA X178 (P)

**DAM - DAYS BANKSIA K310 (AI) (P)**

VALMA LANCELOT A61 (P)  
DAYS BANKSIA G330 (P)  
VALMA GOLDS BANKSIA A96 (P)

DECEMBER 2018 GROUP BREEDPLAN EBVS							
CE DIR	CE DTRS	GL	BWT	200W	400W	600W	MCW
<b>+3.1</b>	<b>+0.2</b>	<b>-0.4</b>	<b>+2.0</b>	<b>+31</b>	<b>+45</b>	<b>+61</b>	<b>+20</b>
40%	30%	73%	68%	65%	66%	69%	61%
MILK	SS	CWT	EMA	RIB	RUMP	RBV%	IMF%
<b>+20</b>	<b>+2.7</b>	<b>+49</b>	<b>+5.4</b>	<b>+1.5</b>	<b>+1.9</b>	<b>+0.3</b>	<b>+1.6</b>
42%	75%	56%	47%	51%	56%	49%	49%

\$ INDEX VALUE	
SUP MKT	+\$103
GRASS FED	+\$105
GRAIN FED	+\$140
EU	+\$116

Homozgyous Polled. Good topped, muscular bull suitable for use on heifers. Top 5% IMF. Top 10% EMA and grained index. Pigment 100/100.

PURCHASER:..... \$.....

# Acc. DAYS WHITEFACE

**Lot 63 - DAYS IMMACULATE N129 (P)**

**N129**

**BIRTH DATE - 31/05/2017**

ALLENDALE YACKA (AI) (P)  
 ALLENDALE ANZAC E114 (PP)  
 ALLENDALE DAWN B22 (AI) (ET) (P)  
**SIRE - INJEMIRA ANZAC AI J188 (AI) (PP)**  
 PEAKES ARTIST A8 (P)  
 INJEMIRA PATTIE D119 (P)  
 INJEMIRA PATTIE Z130 (AI) (ET) (P)

ALLENDALE WASHINGTON C77 (AI) (PP)  
 DAYS WHISKEY E49 (TW) (S)  
 ALLENDALE DAWN X92 (H#)  
**DAM - DAYS BLISSFUL G111 (P)**  
 ALLENDALE VAGABOND A74 (AI) (P)  
 DAYS BLISSFUL E34 (AI) (P)  
 ALLENDALE BLISSFUL B209 (P)

DECEMBER 2018 GROUP BREEDPLAN EBVS							
CE DIR	CE DTRS	GL	BWT	200W	400W	600W	MCW
<b>+2.8</b>	<b>+3.7</b>	<b>-2.0</b>	<b>+4.1</b>	<b>+36</b>	<b>+60</b>	<b>+78</b>	<b>+73</b>
46%	35%	60%	74%	69%	70%	73%	65%
MILK	SS	CWT	EMA	RIB	RUMP	RBV%	IMF%
<b>+18</b>	<b>+1.9</b>	<b>+56</b>	<b>+4.4</b>	<b>+0.8</b>	<b>+0.9</b>	<b>+0.3</b>	<b>+1.0</b>
48%	77%	61%	52%	57%	61%	53%	55%

\$ INDEX VALUE	
SUP MKT	+\$98
GRASS FED	+\$94
GRAIN FED	+\$113
EU	+\$107

Excellent top and hindquarter on this Anzac J188 son who is a trait leader for 200, 400 and 600 day wt and IMF. N129 has balanced figures including being in the top 10% for EMA. Pigment 100/100.

PURCHASER:..... \$.....

# Acc. DAYS WHITEFACE

**Lot 64 - DAYS IDENTITY N062 (AI) (S)**

**N062**

**BIRTH DATE - 11/05/2017**

ALLENDALE VAGABOND A74 (AI) (P)  
 ALLENDALE WATERHOUSE D1 (PP)  
 ALLENDALE MARLINE X185 (P)  
**SIRE - DAYS EXECUTIVE K168 (PP)**  
 ALLENDALE TIPPERARY D13 (AI) (ET) (P)  
 DAYS SILVIA G13 (AI) (P)  
 DAYS SILVIA E30 (AI) (P)

ALLENDALE ROBIN HOOD D194 (PP)  
 DAYS BALTIMORE F82 (P)  
 ALLENDALE FANCY D165 (P)  
**DAM - DAYS FANCY K20 (AI) (P)**  
 WIRRUNA ABERCORN (AI) (P)  
 DAYS FANCY H6 (P)  
 ALLENDALE FANCY B192 (P)

DECEMBER 2018 GROUP BREEDPLAN EBVS							
CE DIR	CE DTRS	GL	BWT	200W	400W	600W	MCW
<b>+8.6</b>	<b>+5.3</b>	<b>-5.9</b>	<b>+2.2</b>	<b>+35</b>	<b>+59</b>	<b>+75</b>	<b>+63</b>
41%	33%	74%	73%	68%	68%	71%	63%
MILK	SS	CWT	EMA	RIB	RUMP	RBV%	IMF%
<b>+22</b>	<b>+2.3</b>	<b>+57</b>	<b>+5.3</b>	<b>+0.3</b>	<b>+0.8</b>	<b>+1.2</b>	<b>+0.7</b>
44%	76%	58%	49%	54%	58%	51%	51%

\$ INDEX VALUE	
SUP MKT	+\$109
GRASS FED	+\$107
GRAIN FED	+\$122
EU	+\$120

Attractive deep bodied, low birth weight bull. Top 1% gestation length. Top 10% calving ease, milk and EMA. Pigment 100/100.

PURCHASER:..... \$.....

# ALLEDALE / DAYS WHITEFACE 2019

## Acc. DAYS WHITEFACE

Lot 65 - DAYS N039 (AI) (TW) (P)

N039

BIRTH DATE - 07/05/2017

QUAMBY PLAINS STOCKMASTER Y118 (P)  
WIRRUNA FLETCHER F214 (P)  
WIRRUNA LAST DAY B16 (AI) (H#)

SIRE - WIRRUNA KATNOOK K74 (AI) (P)

WIRRUNA DAFFY D1 (P)  
WIRRUNA VICTORIA G7 (AI) (P)  
WIRRUNA VICTORIA E112 (AI) (ET) (P)

ALLEDALE VAGABOND A74 (AI) (P)  
ALLEDALE WATERHOUSE D1 (PP)  
ALLEDALE MARLINE X185 (P)

DAM - DAYS FLORRIE K161 (P)

DAYS ROBIN HOOD E124 (P)  
DAYS FLORRIE G108 (P)  
DAYS FLORRIE E56 (AI) (P)

### DECEMBER 2018 GROUP BREEDPLAN EBVS

CE DIR	CE DTRS	GL	BWT	200W	400W	600W	MCW
<b>+1.9</b>	<b>+3.9</b>	<b>-3.8</b>	<b>+5.4</b>	<b>+40</b>	<b>+62</b>	<b>+90</b>	<b>+77</b>
47%	37%	61%	72%	63%	62%	62%	56%
MILK	SS	CWT	EMA	RIB	RUMP	RB%Y	IMF%
<b>+18</b>	<b>+3.0</b>	<b>+64</b>	<b>+6.8</b>	<b>+0.4</b>	<b>+0.2</b>	<b>+1.8</b>	<b>+1.6</b>
46%	60%	53%	44%	47%	50%	46%	49%

### \$ INDEX VALUE

SUP MKT	+\$126
GRASS FED	+\$124
GRAIN FED	+\$160
EU	+\$146

Quality muscular bull with very good figures. Florrie G108 has had 2 sons sell to \$16,000 to Ashmore Farms to average \$13,000. Top 1% EMA. Top 5% gestation length, IMF and all indexes. Top 10% 200 day wt, scrotal size and carcass wt. Pigment 100/100.

PURCHASER:..... \$.....

## Acc. DAYS WHITEFACE

Lot 66 - DAYS FITZROY N105 (AI) (PP)

N105

BIRTH DATE - 22/05/2017

TH 122 711 VICTOR 719T (IMP USA) (P)  
TH 71U 719T MR HEREFORD 11X (IMP USA) (P)  
TH 7N 45P RITA 71U (P)

SIRE - TH 70R 11X MR HEREFORD 34Z (IMP USA) (P)

TH 557E 57G LEGACY 44M (P)  
TH 172J 57G QUEEN MAKER 70R (P)  
SADDLE-VALLEY QUEEN MAKER 172J (P)

ALLEDALE VAGABOND A74 (AI) (P)  
ALLEDALE WATERHOUSE D1 (PP)  
ALLEDALE MARLINE X185 (P)

DAM - DAYS SILVIA H148 (P)

MARKOWEN INTRUDER (PP)  
ALLEDALE SILVIA C143 (P)  
ALLEDALE SILVIA N155 (AI) (P)

### DECEMBER 2018 GROUP BREEDPLAN EBVS

CE DIR	CE DTRS	GL	BWT	200W	400W	600W	MCW
<b>+5.2</b>	<b>+1.6</b>	<b>+1.8</b>	<b>+1.6</b>	<b>+32</b>	<b>+52</b>	<b>+70</b>	<b>+47</b>
49%	40%	75%	74%	69%	70%	73%	65%
MILK	SS	CWT	EMA	RIB	RUMP	RB%Y	IMF%
<b>+21</b>	<b>+2.2</b>	<b>+56</b>	<b>+5.0</b>	<b>+0.3</b>	<b>+0.2</b>	<b>+1.1</b>	<b>+0.0</b>
55%	77%	61%	53%	57%	61%	54%	56%

### \$ INDEX VALUE

SUP MKT	\$96
GRASS FED	\$94
GRAIN FED	\$101
EU	\$106

Homozygous Polled. Long bodied early maturing bull. Best 10% of the breed for birth weight, milk and EMA. Pigment 100/100.

PURCHASER:..... \$.....

# Acc. DAYS WHITEFACE

**Lot 67 - DAYS HUNTER N124 (AI) (P)**

**N124**

**BIRTH DATE - 28/05/2017**

TH 122 71I VICTOR 719T (IMP USA) (P)  
 TH 71U 719T MR HEREFORD 11X (IMP USA) (P)  
 TH 7N 45P RITA 71U (P)

ALLENDALE WATERHOUSE D1 (PP)  
 DAYS DRIFTER H9 (TW) (P)  
 PINE HILL MARITANA B513 (P)

**SIRE - TH 70R 11X MR HEREFORD 34Z (IMP USA) (P)**

**DAM - DAYS SIRIKIT K199 (P)**

TH 557E 57G LEGACY 44M (P)  
 TH 172J 57G QUEEN MAKER 70R (P)  
 SADDLE-VALLEY QUEEN MAKER 172J (P)

ALLENDALE VAN DIEMEN A124 (P)  
 DAYS SIRIKIT G164 (P)  
 PINE HILL SIRIKIT Z636 (P)

DECEMBER 2018 GROUP BREEDPLAN EBVS							
CE DIR	CE DTRS	GL	BWT	200W	400W	600W	MCW
<b>+3.1</b>	<b>+1.0</b>	<b>+3.2</b>	<b>+3.5</b>	<b>+35</b>	<b>+62</b>	<b>+85</b>	<b>+64</b>
46%	35%	73%	73%	69%	69%	72%	65%
MILK	SS	CWT	EMA	RIB	RUMP	RBV%	IMF%
<b>+21</b>	<b>+2.1</b>	<b>+63</b>	<b>+5.2</b>	<b>+0.5</b>	<b>+0.3</b>	<b>+1.1</b>	<b>+0.3</b>
51%	77%	59%	51%	55%	59%	52%	54%

\$ INDEX VALUE	
SUP MKT	+\$107
GRASS FED	+\$103
GRAIN FED	+\$117
EU	+\$117

Thick early maturing bull whose full brother sold for \$13,000 to Woomargama Station last year. Top 10% milk, carcase wt and EMA. Pigment 100/100.

PURCHASER:..... \$.....

# Acc. DAYS WHITEFACE

**Lot 68 - DAYS INNKEEPER N120 (P)**

**N120**

**BIRTH DATE - 26/05/2017**

MELVILLE EXCEL E443 (P)  
 DAYS ELABORATE J59 (AI) (P)  
 DAYS CORA E38 (AI) (P)

ALLENDALE WATERHOUSE D1 (PP)  
 DAYS CALIBRE G74 (PP)  
 ALLENDALE DAWN C62 (AI) (P)

**SIRE - DAYS GALLIPOLI L142 (PP)**

**DAM - DAYS FANCY L30 (AI) (P)**

DAYS CALIBRE G74 (PP)  
 DAYS FANCY J76 (AI) (P)  
 DAYS FANCY F38 (AI) (P)

WIRRUNA ABERCORN (AI) (P)  
 DAYS FANCY E111 (P)  
 ALLENDALE FANCY A230 (P)

DECEMBER 2018 GROUP BREEDPLAN EBVS							
CE DIR	CE DTRS	GL	BWT	200W	400W	600W	MCW
<b>+7.7</b>	<b>+6.7</b>	<b>-1.4</b>	<b>+3.0</b>	<b>+31</b>	<b>+51</b>	<b>+73</b>	<b>+83</b>
41%	32%	54%	72%	66%	67%	70%	62%
MILK	SS	CWT	EMA	RIB	RUMP	RBV%	IMF%
<b>+14</b>	<b>+2.2</b>	<b>+53</b>	<b>+5.1</b>	<b>+0.9</b>	<b>+1.6</b>	<b>+0.9</b>	<b>+1.1</b>
42%	77%	57%	49%	53%	57%	51%	50%

\$ INDEX VALUE	
SUP MKT	+\$111
GRASS FED	+\$110
GRAIN FED	+\$128
EU	+\$126

Muscular, low birthweight heifers first calf. Son of E111 sold for \$9,000 in 2018. Top 10% calving ease, EMA, IMF, grassfed and EU indexes. Pigment 100/100.

PURCHASER:..... \$.....

# **TATIARA ARTIFICIAL BREEDING SERVICES**

**Govt. Lic. Semen Production Centre**

**Box 595,  
Bordertown S.A. 5268  
Phone: 08 8752 1578  
Fax: 08 8752 2970**



**Semen collection and freezing  
Semen storage  
Artificial insemination  
Embryo collection and freezing**



**Semen collection and freezing  
Semen storage  
Laparoscopic insemination  
Embryo transfer**

**Licensed & unlicensed semen collection & dispatch - Export of  
semen - all protocols catered for.**

**Proprietors: KG & JM Watson**

**Acc. ALLENDALE**

**Lot 69 - ALLENDALE GANGSTER N158 (S)**

**N158**

**BIRTH DATE - 28/06/2017**

ALLENDALE WATERHOUSE D1 (PP)  
 DAYS ROBIN HOOD H38 (AI) (ET) (PP)  
 ALLENDALE FANCY U5 (AI) (P)

MOUNT DIFFICULT FELLIS Y12 (AI) (P)  
 WIRRUNA ABERCORN (AI) (P)  
 WIRRUNA GOLDEN VANITY R94 (AI) (P)

**SIRE - ALLENDALE CHISEL L3 (ET) (PP)**  
 SOUTH BUKALONG SHANNON 40 (PP)  
 ALLENDALE CORA D47 (AI) (P)  
 ALLENDALE CORA B7 (AI) (P)

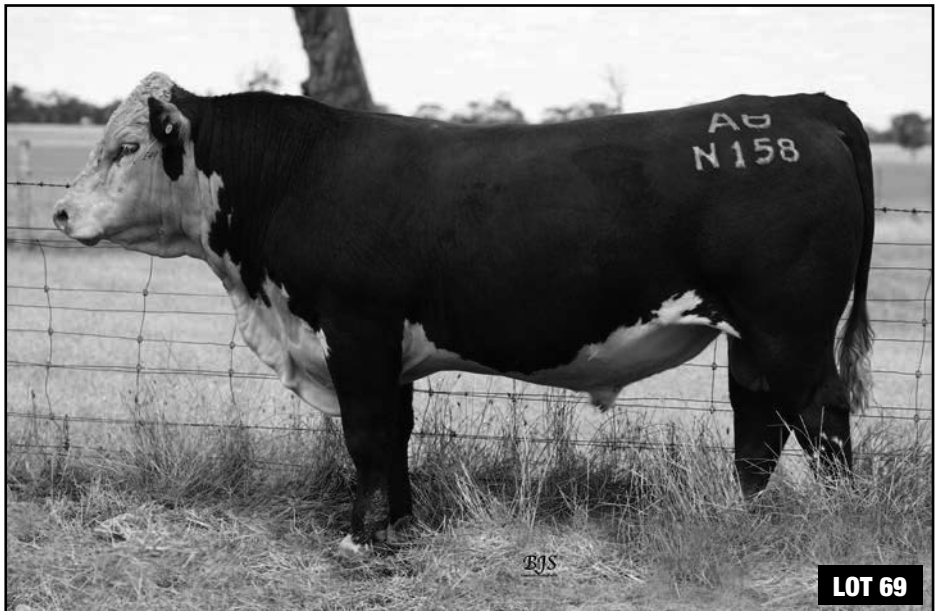
**DAM - ALLENDALE MARLINE E49 (P)**  
 BOBANKEN X-CEPTIONAL X44 (P)  
 ALLENDALE MARLINE A109 (P)  
 ALLENDALE MARLINE V153 (P)

DECEMBER 2018 GROUP BREEDPLAN EBVS							
CE DIR	CE DTRS	GL	BWT	200W	400W	600W	MCW
<b>+2.5</b>	<b>+1.3</b>	<b>-3.0</b>	<b>+3.8</b>	<b>+31</b>	<b>+55</b>	<b>+72</b>	<b>+65</b>
45%	37%	57%	73%	67%	67%	69%	62%
MILK	SS	CWT	EMA	RIB	RUMP	RBV%	IMF%
<b>+12</b>	<b>+3.4</b>	<b>+50</b>	<b>+5.2</b>	<b>+0.7</b>	<b>+1.9</b>	<b>+1.6</b>	<b>+0.0</b>
53%	74%	57%	48%	54%	58%	51%	53%

\$ INDEX VALUE	
SUP MKT	+\$104
GRASS FED	+\$102
GRAIN FED	+\$110
EU	+\$118

A Long, correct bull. Dam E49 has 4 ET sons in this sale - Lots 19, 20, 21 and 22, and 2 sons for Wodonga. N158 would be a good bull for cows and heifers. Top 5% SS. Top 10% GL, EMA and Rump Fat. Top 15% RBV and EU. Top 20% Supermarket and Grass fed Indexes. Pigment 100/100.

PURCHASER:..... \$.....



**LOT 69**

# ALLEDALE / DAYS WHITEFACE 2019

## Acc. ALLENDALE

**Lot 70 - ALLENDALE INCREASE N118 (PP)**

**N118**

**BIRTH DATE - 01/06/2017**

ALLEDALE WATERHOUSE D1 (PP)  
 DAYS ROBIN HOOD H38 (AI) (ET) (PP)  
 ALLENDALE FANCY U5 (AI) (P)

ALLEDALE SUPERSTAR B28 (AI) (ET) (S)  
 ALLENDALE YALLAROI 2 (AI) (TW) (P)  
 ALLENDALE FANCY A181 (AI) (P)

**SIRE - ALLENDALE CHISEL L3 (ET) (PP)**  
 SOUTH BUKALONG SHANNON 40 (PP)  
 ALLENDALE CORA D47 (AI) (P)  
 ALLENDALE CORA B7 (AI) (P)

**DAM - ALLENDALE FANCY K13 (P)**  
 ALLENDALE OVERTON (P)  
 ALLENDALE FANCY Z59 (P)  
 ALLENDALE FANCY V35 (P)

DECEMBER 2018 GROUP BREEDPLAN EBVS							
CE DIR	CE DTRS	GL	BWT	200W	400W	600W	MCW
-1.0	+1.0	-2.5	+4.6	+37	+59	+78	+67
44%	35%	55%	72%	66%	67%	70%	62%
MILK	SS	CWT	EMA	RIB	RUMP	RBV%	IMF%
+10	+3.4	+51	+4.6	+1.6	+2.9	+0.3	+0.9
45%	76%	57%	48%	53%	57%	50%	52%

\$ INDEX VALUE	
SUP MKT	+\$108
GRASS FED	+\$106
GRAIN FED	+\$126
EU	+\$121

Good headed, well muscled bull. A typical L3 son. Fancy Z59 mother of our Washington bulls is this bull's granddam. Top 5% SS, Rib and Rump fat. Top 10% GL and Grain fed Index. Top 15% EMA, IMF, Supermarket, Grass fed and EU Indexes. Pigment 100/100. HOMOZYGOUS POLL.

PURCHASER: ..... \$ .....





**Acc. ALLENDALE**

**Lot 71 - ALLENDALE INSPIRATION N060 (PP)**

**N060**

**BIRTH DATE - 03/05/2017**

WIRRUNA DAFFY D1 (P)  
 WIRRUNA GEELONG G171 (AI) (PP)  
 WIRRUNA LAST DAY E163 (AI) (P)  
**SIRE - ALLENDALE JI FREEWAY K28 (AI) (PP)**  
 ALLENDALE WATERHOUSE D1 (PP)  
 ABBERLEY MARLINE H10 (AI) (P)  
 ABBERLEY MARLINE E6 (AI) (P)

ALLENDALE YALLARO1 2 (AI) (TW) (P)  
 ALLENDALE CHISEL G161 (P)  
 ALLENDALE CORA D47 (AI) (P)  
**DAM - ALLENDALE FANCY L39 (AI) (TW) (P)**  
 ALLENDALE YEMEN E39 (P)  
 ALLENDALE FANCY G6 (P)  
 ALLENDALE FANCY E2 (AI) (P)

DECEMBER 2018 GROUP BREEDPLAN EBVS								\$ INDEX VALUE	
CE DIR	CE DTRS	GL	BWT	200W	400W	600W	MCW	SUP MKT	+
<b>+2.9</b>	<b>+0.1</b>	<b>-0.5</b>	<b>+2.5</b>	<b>+34</b>	<b>+54</b>	<b>+76</b>	<b>+65</b>		+\$105
41%	31%	58%	71%	65%	66%	69%	61%	GRASS FED	+\$102
MILK	SS	CWT	EMA	RIB	RUMP	RBV%	IMF%	GRAIN FED	+
<b>+15</b>	<b>+3.5</b>	<b>+57</b>	<b>+3.5</b>	<b>+0.6</b>	<b>+0.8</b>	<b>+0.7</b>	<b>+0.2</b>		+\$114
43%	76%	55%	47%	51%	56%	49%	49%	EU	+\$118

Meaty bull suitable for heifers. G6 is also the granddam of Lots 4 and 42. Top 5% SS. Top 15% Birth Wt and EU Index. Top 20% Supermarket and Grass fed Indexes. Pigment 100/100. HOMOZYGOUS POLL.

PURCHASER:..... \$.....



**LOT 71**

# ALLENDALE / DAYS WHITEFACE 2019

## Acc. ALLENDALE

**Lot 72 - ALLENDALE INFERNO N108 (PP)**

**N108**

**BIRTH DATE - 25/05/2017**

ALLENDALE WATERHOUSE D1 (PP)  
 DAYS ROBIN HOOD H38 (AI) (ET) (PP)  
 ALLENDALE FANCY U5 (AI) (P)

ALLENDALE YEMEN E39 (P)  
 ALLENDALE CARRIETON H149 (P)  
 ALLENDALE CORA B7 (AI) (P)

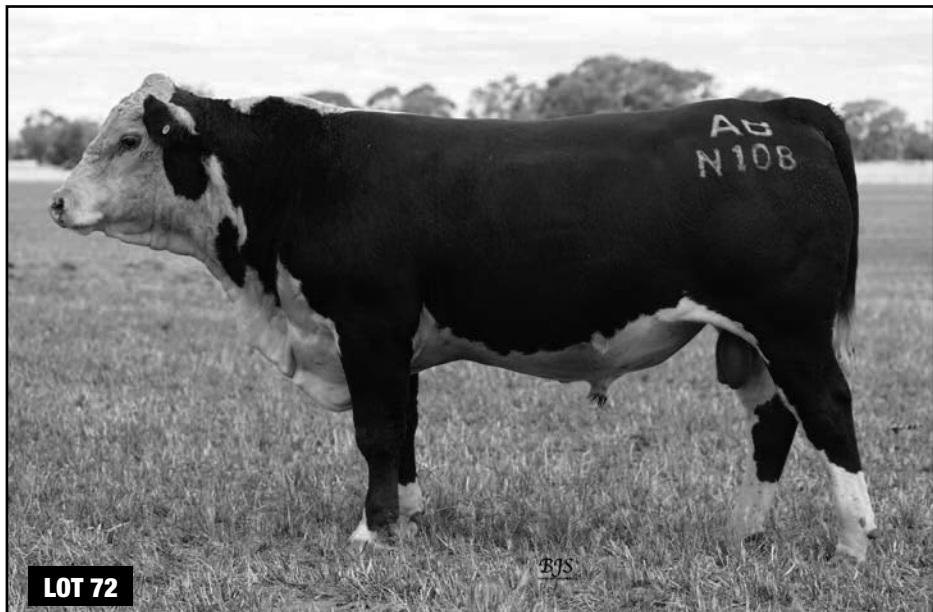
**SIRE - ALLENDALE CHISEL L3 (ET) (PP)**  
 SOUTH BUKALONG SHANNON 40 (PP)  
 ALLENDALE CORA D47 (AI) (P)  
 ALLENDALE CORA B7 (AI) (P)

**DAM - ALLENDALE DAISY K187 (P)**  
 ALLENDALE LANDLORD 3 (AI) (P)  
 ALLENDALE DAISY X216 (P)  
 ALLENDALE DAISY M7 (H)

DECEMBER 2018 GROUP BREEDPLAN EBVS								\$ INDEX VALUE	
CE DIR	CE DTRS	GL	BWT	200W	400W	600W	MCW	SUP MKT	+\$85
<b>+5.1</b>	<b>+2.3</b>	<b>-2.5</b>	<b>+1.2</b>	<b>+21</b>	<b>+38</b>	<b>+51</b>	<b>+48</b>	GRASS FED	+\$86
41%	33%	52%	71%	63%	63%	64%	55%	GRAIN FED	+\$91
MILK	SS	CWT	EMA	RIB	RUMP	RBV%	IMF%	EU	+\$97
<b>+12</b>	<b>+2.4</b>	<b>+36</b>	<b>+4.0</b>	<b>+1.0</b>	<b>+2.2</b>	<b>+0.6</b>	<b>+0.2</b>		
44%	63%	53%	38%	51%	54%	44%	50%		

Correct, well muscled bull. Typical L3. Good bull for Heifers. Top 5% Rump Fat. Top 10% GL and Birth Wt. Top 20% SS and Rib Fat. Pigment 100/100. HOMOZYGOUS POLL.

PURCHASER: ..... \$ .....



# Acc. ALLENDALE

## Lot 73 - ALLENDALE IVANHOE N016 (P)

**N016**

**BIRTH DATE - 18/04/2017**

ALLENDALE WATERHOUSE D1 (PP)  
 DAYS ROBIN HOOD H38 (AI) (ET) (PP)  
 ALLENDALE FANCY U5 (AI) (P)

ALLENDALE WATERHOUSE D1 (PP)  
 ALLENDALE WASHINGTON G82 (ET) (P)  
 ALLENDALE FANCY Z59 (P)

**SIRE - ALLENDALE CHISEL L3 (ET) (PP)**  
 SOUTH BUKALONG SHANNON 40 (PP)  
 ALLENDALE CORA D47 (AI) (P)  
 ALLENDALE CORA B7 (AI) (P)

**DAM - ALLENDALE FANCY K19 (AI) (P)**  
 ALLENDALE ANZAC E114 (PP)  
 ALLENDALE FANCY H25 (AI) (PP)  
 ALLENDALE FANCY B115 (P)

DECEMBER 2018 GROUP BREEDPLAN EBVS							
CE DIR	CE DTRS	GL	BWT	200W	400W	600W	MCW
<b>+0.6</b>	<b>+2.2</b>	<b>-3.5</b>	<b>+4.8</b>	<b>+36</b>	<b>+56</b>	<b>+77</b>	<b>+85</b>
43%	34%	56%	73%	67%	67%	71%	63%
MILK	SS	CWT	EMA	RIB	RUMP	RBV%	IMF%
<b>+14</b>	<b>+2.4</b>	<b>+47</b>	<b>+3.9</b>	<b>+1.2</b>	<b>+2.6</b>	<b>-0.4</b>	<b>+1.1</b>
45%	76%	57%	48%	54%	58%	51%	51%

\$ INDEX VALUE	
SUP MKT	+\$97
GRASS FED	+\$94
GRAIN FED	+\$111
EU	+\$107

Thick, early maturing bull. Granddam H25 is also the granddam of Lot 2. Top 5% GL and Rump Fat. Top 10% IMF. Top 15% Rib Fat. Top 20% SS. Pigment 100/100.

PURCHASER:..... \$.....

# Acc. ALLENDALE

## Lot 74 - ALLENDALE IDOL N154 (S)

**N154**

**BIRTH DATE - 20/06/2017**

ALLENDALE WATERHOUSE D1 (PP)  
 DAYS ROBIN HOOD H38 (AI) (ET) (PP)  
 ALLENDALE FANCY U5 (AI) (P)

ALLENDALE YACKA (AI) (P)  
 ALLENDALE ANZAC E114 (PP)  
 ALLENDALE DAWN B22 (AI) (ET) (P)

**SIRE - ALLENDALE CHISEL L3 (ET) (PP)**  
 SOUTH BUKALONG SHANNON 40 (PP)  
 ALLENDALE CORA D47 (AI) (P)  
 ALLENDALE CORA B7 (AI) (P)

**DAM - ALLENDALE BLUE MIST H9 (AI) (P)**  
 HEATHERDALE MAGNUM C97 (P)  
 ALLENDALE BLUE MIST E13 (P)  
 HEATHERDALE BLUE MIST C25 (AI) (P)

DECEMBER 2018 GROUP BREEDPLAN EBVS							
CE DIR	CE DTRS	GL	BWT	200W	400W	600W	MCW
<b>+2.1</b>	<b>+1.3</b>	<b>-3.0</b>	<b>+3.5</b>	<b>+36</b>	<b>+59</b>	<b>+75</b>	<b>+55</b>
45%	36%	57%	73%	67%	68%	71%	63%
MILK	SS	CWT	EMA	RIB	RUMP	RBV%	IMF%
<b>+17</b>	<b>+2.7</b>	<b>+58</b>	<b>+6.6</b>	<b>+2.8</b>	<b>+4.9</b>	<b>-0.7</b>	<b>+2.1</b>
48%	76%	58%	49%	55%	58%	52%	52%

\$ INDEX VALUE	
SUP MKT	+\$121
GRASS FED	+\$123
GRAIN FED	+\$158
EU	+\$132

Another good, early maturing L3 son. This fella has a few crosses of cattle with muscle and IMF. Dam H9 is about to join our donor program - she is a full sister to stud sire Collingwood J29. Top 1% EMA, Rib and Rump fat and IMF. Top 5% Supermarket, Grass fed and Grain Fed Indexes. Top 10% GL and EU Index. Top 15% Scrotal Size. Top 20% Cwt. Pigment 100/100.

PURCHASER:..... \$.....

# ALLENDALE / DAYS WHITEFACE 2019

## Acc. ALLENDALE

### Lot 75 - ALLENDALE IMPORT N141 (AI) (P)

**N141**

**BIRTH DATE - 10/06/2017**

ALLENDALE VAGABOND A74 (AI) (P)  
ALLENDALE WATERHOUSE D1 (PP)  
ALLENDALE MARLINE X185 (P)

ALLENDALE YEMEN E39 (P)  
ALLENDALE COLLINGWOOD G20 (AI) (P)  
ALLENDALE BLUE MIST E13 (P)

**SIRE - ALLENDALE ANZAC K4 (ET) (PP)**

**DAM - ALLENDALE DAWN J30 (P)**

ALLENDALE NATIONAL W168 (PP)  
ALLENDALE DAWN B22 (AI) (ET) (P)  
ALLENDALE DAWN T60 (AI) (P)

ALLENDALE ZEPPELIN E15 (AI) (P)  
ALLENDALE DAWN G141 (P)  
ALLENDALE DAWN A263 (P)

DECEMBER 2018 GROUP BREEDPLAN EBVS							
CE DIR	CE DTRS	GL	BWT	200W	400W	600W	MCW
<b>+0.7</b>	<b>+2.6</b>	<b>+0.4</b>	<b>+4.8</b>	<b>+37</b>	<b>+51</b>	<b>+70</b>	<b>+64</b>
45%	37%	73%	73%	68%	68%	71%	64%
MILK	SS	CWT	EMA	RIB	RUMP	RBV%	IMF%
<b>+20</b>	<b>+3.5</b>	<b>+42</b>	<b>+3.5</b>	<b>+0.8</b>	<b>+1.4</b>	<b>+0.2</b>	<b>+0.7</b>
47%	76%	58%	50%	55%	59%	52%	53%

\$ INDEX VALUE	
SUP MKT	+\$90
GRASS FED	+\$87
GRAIN FED	+\$102
EU	+\$101

Deep bodied, smooth skinned bull, suitable for heifers. Top 5% SS. Top 15% Milk. Top 20% IMF. Pigment 100/100.

PURCHASER:..... \$.....

## Acc. ALLENDALE

### Lot 76 - ALLENDALE FEDERAL N131 (AI) (S)

**N131**

**BIRTH DATE - 06/06/2017**

ALLENDALE VAGABOND A74 (AI) (P)  
ALLENDALE WATERHOUSE D1 (PP)  
ALLENDALE MARLINE X185 (P)

WIRRUNA ABERCORN (AI) (P)  
ALLENDALE YEMEN E39 (P)  
ALLENDALE FANCY A158 (AI) (ET) (S)

**SIRE - ALLENDALE ANZAC K4 (ET) (PP)**

**DAM - ALLENDALE KERRY MAID H45 (P)**

ALLENDALE NATIONAL W168 (PP)  
ALLENDALE DAWN B22 (AI) (ET) (P)  
ALLENDALE DAWN T60 (AI) (P)

ALLENDALE SUPERSTAR B26 (AI) (ET) (P)  
ALLENDALE KERRY MAID F7 (P)  
WIRANYA KERRY MAID W28 (S)

DECEMBER 2018 GROUP BREEDPLAN EBVS							
CE DIR	CE DTRS	GL	BWT	200W	400W	600W	MCW
<b>+9.4</b>	<b>+7.3</b>	<b>-1.3</b>	<b>+0.8</b>	<b>+26</b>	<b>+37</b>	<b>+48</b>	<b>+36</b>
46%	38%	74%	74%	68%	69%	71%	64%
MILK	SS	CWT	EMA	RIB	RUMP	RBV%	IMF%
<b>+19</b>	<b>+1.3</b>	<b>+39</b>	<b>+4.6</b>	<b>+0.9</b>	<b>+1.6</b>	<b>+1.1</b>	<b>+0.5</b>
49%	77%	59%	51%	55%	59%	53%	53%

\$ INDEX VALUE	
SUP MKT	+\$88
GRASS FED	+\$89
GRAIN FED	+\$98
EU	+\$99

Deep bodied bull, very suitable for heifers. Top 5% Bwt. Top 10% Calving Ease. Top 15% EMA and Rump Fat. Top 20% Milk. Pigment 100/100.

PURCHASER:..... \$.....

# Acc. ALLENDALE

**Lot 77 - ALLENDALE HOWZAT N041 (AI) (PP)**

**N041**

**BIRTH DATE - 27/04/2017**

ALLENDALE KING KONG 2 (S)  
 ALLENDALE NATIONAL W168 (PP)  
 ALLENDALE CORA R22 (P)  
**SIRE - ALLENDALE WASHINGTON K5 (ET) (PP)**  
 ALLENDALE OVERTON (P)  
 ALLENDALE FANCY Z59 (P)  
 ALLENDALE FANCY V35 (P)

ALLENDALE SUPERSTAR B28 (AI) (ET) (S)  
 ALLENDALE ADVANTAGE E14 (AI) (P)  
 ALLENDALE FANCY A301 (P)  
**DAM - ALLENDALE FANCY H55 (AI) (P)**  
 ALLENDALE PRECISION Z101 (P)  
 ALLENDALE FANCY B196 (P)  
 ALLENDALE FANCY Y213 (P)

DECEMBER 2018 GROUP BREEDPLAN EBVS							
CE DIR	CE DTRS	GL	BWT	200W	400W	600W	MCW
<b>-5.2</b>	<b>-5.1</b>	<b>-2.8</b>	<b>+6.7</b>	<b>+36</b>	<b>+59</b>	<b>+79</b>	<b>+82</b>
47%	39%	76%	74%	70%	70%	73%	65%
MILK	SS	CWT	EMA	RIB	RUMP	RBV%	IMF%
<b>+22</b>	<b>+1.8</b>	<b>+45</b>	<b>+3.7</b>	<b>+0.9</b>	<b>+1.4</b>	<b>-0.1</b>	<b>+0.8</b>
52%	78%	60%	52%	56%	60%	54%	55%

\$ INDEX VALUE	
SUP MKT	+\$69
GRASS FED	+\$63
GRAIN FED	+\$76
EU	+\$74

Deep, Soft, strong headed bull. Top 5% Milk. Top 10% GL. Top 20% Rump Fat and IMF. Pigment 100/100. HOMOZYGOUS POLL.

PURCHASER:..... \$.....

# Acc. DAYS WHITEFACE

**Lot 78 - DAYS INSIGHT N045 (AI) (PP)**

**N045**

**BIRTH DATE - 09/05/2017**

ALLENDALE WATERHOUSE D1 (PP)  
 DAYS CALIBRE G74 (PP)  
 ALLENDALE DAWN C62 (AI) (P)  
**SIRE - DAYS WIZARD K5 (AI) (ET) (S)**  
 ALLENDALE NATIONAL W168 (PP)  
 ALLENDALE DAWN Z21 (AI) (P)  
 ALLENDALE DAWN V54 (AI) (P)

VALMA MERCHANT (AI) (P)  
 YAVENVALE GURU G031 (PP)  
 YAVENVALE TREASURE D403 (P)  
**DAM - DAYS DAWN L2 (AI) (ET) (P)**  
 SOUTH BUKALONG SHANNON 40 (PP)  
 ALLENDALE DAWN D70 (AI) (P)  
 ALLENDALE DAWN A263 (P)

DECEMBER 2018 GROUP BREEDPLAN EBVS							
CE DIR	CE DTRS	GL	BWT	200W	400W	600W	MCW
<b>-3.2</b>	<b>+2.8</b>	<b>+0.0</b>	<b>+7.2</b>	<b>+42</b>	<b>+69</b>	<b>+98</b>	<b>+93</b>
45%	37%	72%	72%	67%	67%	70%	63%
MILK	SS	CWT	EMA	RIB	RUMP	RBV%	IMF%
<b>+13</b>	<b>+3.4</b>	<b>+62</b>	<b>+4.3</b>	<b>+1.0</b>	<b>+1.8</b>	<b>+0.5</b>	<b>+0.7</b>
48%	76%	58%	50%	54%	58%	51%	53%

\$ INDEX VALUE	
SUP MKT	+\$109
GRASS FED	+\$103
GRAIN FED	+\$121
EU	+\$119

Homozygous Polled. Good top and hindquarter on this heifer's first calf sired by the 2015 Adelaide Feature Show Grand Champion. Top 5% scrotal size and 400 day wt. Top 10% 200 and 600 day wt and carcass wt. Pigment 100/100.

PURCHASER:..... \$.....



**MGA Insurance Brokers Pty Ltd**

ACN 008 096 277 AFS LICENCE NO. 244601

61 Commercial Street, East Mount Gambier SA 5290

Phone: 8726 5300 Fax: 8723 1592

---

## **WHY NOT TRY OUR MILLENNIUM FARM INSURANCE**

---

- FEATURING:**
- *Full accidental damage cover*
  - *Broader cover on unspecified farm buildings contents and farm machinery*
  - *Increased theft cover*
  - *Plus many more additional benefits*

### **CONTACT**

**JONATHAN BRUHN**  
**FOR AN INDEPENDENT QUOTE**

- 
- **Rural** • **Corporate** • **Commercial** •
  - **Superannuation** • **Life** •
- 

*MGA are proud to have been associated with The Day Family for over 40 years and wish them continuing success*

Acc. DAYS WHITEFACE

Lot 79 - DAYS ISIDORE N104 (AI) (S)

N104

BIRTH DATE - 22/05/2017

QUAMBY PLAINS STOCKMASTER Y118 (P)  
 WIRRUNA FLETCHER F214 (P)  
 WIRRUNA LAST DAY B16 (AI) (H#)  
**SIRE - WIRRUNA KATNOOK K74 (AI) (P)**  
 WIRRUNA DAFFY D1 (P)  
 WIRRUNA VICTORIA G7 (AI) (P)  
 WIRRUNA VICTORIA E112 (AI) (ET) (P)

ALLEDALE VAGABOND A74 (AI) (P)  
 ALLEDALE WATERHOUSE D1 (PP)  
 ALLEDALE MARLINE X185 (P)  
**DAM - DAYS DALLAS J78 (P)**  
 WIRRUNA ABERCORN (AI) (P)  
 DAYS DALLAS (ET) (P)  
 DEBARRY DALLAS X75 (AI) (P)

DECEMBER 2018 GROUP BREEDPLAN EBVS							
CE DIR	CE DTRS	GL	BWT	200W	400W	600W	MCW
-5.3	+1.0	-2.6	+6.3	+39	+56	+81	+75
48%	38%	75%	74%	69%	69%	72%	65%
MILK	SS	CWT	EMA	RIB	RUMP	RBV%	IMF%
+14	+2.5	+50	+4.8	-0.3	-0.9	+1.7	+1.0
49%	77%	60%	52%	56%	60%	54%	55%

\$ INDEX VALUE	
SUP MKT	+\$88
GRASS FED	+\$84
GRAIN FED	+\$109
EU	+\$105

Long smooth skinned bull. Top 10% gestation length. EMA and IMF. Pigment 100/100.

PURCHASER:..... \$.....

Acc. DAYS WHITEFACE

Lot 80 - DAYS N128 (S)

N128

BIRTH DATE - 30/05/2017

TH 71U 719T MR HEREFORD 11X (IMP USA) (P)  
 TH 70R 11X MR HEREFORD 34Z (IMP USA) (P)  
 TH 172J 57G QUEEN MAKER 70R (P)  
**SIRE - DAYS GUNPOWDER L13 (AI) (S)**  
 ALLEDALE WATERHOUSE D1 (PP)  
 DAYS DAWN J71 (P)  
 ALLEDALE DAWN D161 (P)

ALLEDALE ROBIN HOOD D194 (PP)  
 DAYS BALTIMORE F82 (P)  
 ALLEDALE FANCY D165 (P)  
**DAM - DAYS SIRIKIT L46 (AI) (P)**  
 DAYS ARMSTRONG E312 (P)  
 DAYS SIRIKIT H15 (P)  
 PINE HILL SIRIKIT B705 (P)

DECEMBER 2018 GROUP BREEDPLAN EBVS							
CE DIR	CE DTRS	GL	BWT	200W	400W	600W	MCW
+3.9	+2.7	-3.5	+4.6	+36	+61	+81	+63
39%	29%	55%	71%	65%	66%	69%	61%
MILK	SS	CWT	EMA	RIB	RUMP	RBV%	IMF%
+18	+2.3	+57	+5.5	+0.7	+0.5	+0.5	+1.8
40%	75%	55%	47%	52%	56%	49%	48%

\$ INDEX VALUE	
SUP MKT	+\$108
GRASS FED	+\$107
GRAIN FED	+\$143
EU	+\$122

Attractive, good hindquartered heifer's first calf. Top 1% IMF. Top 5% gestation length and EMA. Top 10% grainfed index. Pigment 100/100.

PURCHASER:..... \$.....

# ALLEDALE / DAYS WHITEFACE 2019

## Acc. DAYS WHITEFACE

Lot 81 - DAYS HERDSMAN N036 (AI) (PP)

N036

BIRTH DATE - 06/05/2017

ALLEDALE WATERHOUSE D1 (PP)  
DAYS CALIBRE G74 (PP)  
ALLEDALE DAWN C62 (AI) (P)

MELVILLE EXCEL E443 (P)  
DAYS BRUNSWICK H69 (AI) (P)  
AMOR MARGEE Z26 (AI) (P)

SIRE - DAYS ROBIN HOOD J183 (PP)

ALLEDALE KENWORTH 2 (P)  
ALLEDALE FANCY U5 (AI) (P)  
ALLEDALE FANCY 248 (AI) (P)

DAM - DAYS FANCY K140 (P)

DAYS BEDFORD F14 (AI) (P)  
DAYS FANCY H165 (P)  
DAYS FANCY F165 (P)

DECEMBER 2018 GROUP BREEDPLAN EBVS							
CE DIR	CE DTRS	GL	BWT	200W	400W	600W	MCW
<b>+7.1</b>	<b>+5.2</b>	<b>-5.9</b>	<b>+3.3</b>	<b>+30</b>	<b>+48</b>	<b>+69</b>	<b>+57</b>
41%	34%	73%	71%	65%	63%	65%	58%
MILK	SS	CWT	EMA	RIB	RUMP	RB%Y	IMF%
<b>+18</b>	<b>+2.9</b>	<b>+46</b>	<b>+5.0</b>	<b>+0.7</b>	<b>+1.6</b>	<b>+1.4</b>	<b>+0.8</b>
46%	65%	53%	40%	50%	54%	46%	50%

\$ INDEX VALUE	
SUP MKT	+\$110
GRASS FED	+\$110
GRAIN FED	+\$129
EU	+\$125

Homozygous Polled. Big, long bull whose full brother sold for \$9,000 to Woomargama Station in 2018. Top 1% gestation length. Top 10% scrotal size, EMA, grassfed and EU indexes. Pigment 100/100.

PURCHASER:..... \$.....

## Acc. DAYS WHITEFACE

Lot 82 - DAYS GUARDIAN N020 (AI) (PP)

N020

BIRTH DATE - 29/04/2017

ALLEDALE VAGABOND A74 (AI) (P)  
ALLEDALE WATERHOUSE D1 (PP)  
ALLEDALE MARLINE X185 (P)  
SIRE - DAYS EXECUTIVE K168 (PP)  
ALLEDALE TIPPERARY D13 (AI) (ET) (P)  
DAYS SILVIA G13 (AI) (P)  
DAYS SILVIA E30 (AI) (P)

SOUTH BUKALONG WALLACE 2 (P)  
DAYS BEDFORD F14 (AI) (P)  
ALLEDALE MARSHALL LASS D100 (AI) (P)  
DAM - DAYS FANCY H165 (P)  
ALLEDALE ZUHKOV D191 (P)  
DAYS FANCY F165 (P)  
ALLEDALE FANCY C25 (AI) (ET) (P)

DECEMBER 2018 GROUP BREEDPLAN EBVS							
CE DIR	CE DTRS	GL	BWT	200W	400W	600W	MCW
<b>+3.5</b>	<b>+4.0</b>	<b>-5.5</b>	<b>+5.2</b>	<b>+43</b>	<b>+70</b>	<b>+99</b>	<b>+81</b>
41%	33%	72%	73%	68%	68%	71%	63%
MILK	SS	CWT	EMA	RIB	RUMP	RB%Y	IMF%
<b>+22</b>	<b>+3.4</b>	<b>+62</b>	<b>+4.6</b>	<b>+0.2</b>	<b>+0.6</b>	<b>+1.3</b>	<b>+0.8</b>
46%	77%	58%	49%	53%	57%	51%	51%

\$ INDEX VALUE	
SUP MKT	+\$128
GRASS FED	+\$123
GRAIN FED	+\$145
EU	+\$140

Homozygous Polled. Long bodied bull in top 1% for gestation length. Top 5% for 200, 400 and 600 day wt, milk, scrotal size and all indexes. Pigment 100/100.

PURCHASER:..... \$.....



# Acc. DAYS WHITEFACE

**Lot 83 - DAYS INDEPENDENT N190 (P)**

**N190**

**BIRTH DATE - 04/07/2017**

MELVILLE EXCEL E443 (P)  
 DAYS ELABORATE J59 (AI) (P)  
 DAYS CORA E38 (AI) (P)  
**SIRE - DAYS GLOBETROTTER L107 (P)**  
 DAYS BEDFORD F14 (AI) (P)  
 DAYS BLISSFUL J25 (AI) (P)  
 DAYS BLISSFUL G111 (P)

REMITALL EMBRACER 8E (IMP CAN) (P)  
 DAYS BLACKBERRY G82 (AI) (P)  
 ALLENDALE FANCY B94 (AI) (P)  
**DAM - DAYS FANCY J137 (P)**  
 ALLENDALE SUPERSTAR B28 (AI) (ET) (S)  
 DAYS FANCY G89 (AI) (ET) (P)  
 ALLENDALE FANCY Z59 (P)

DECEMBER 2018 GROUP BREEDPLAN EBVS							
CE DIR	CE DTRS	GL	BWT	200W	400W	600W	MCW
<b>+7.6</b>	<b>+4.9</b>	<b>-1.5</b>	<b>+3.5</b>	<b>+36</b>	<b>+56</b>	<b>+78</b>	<b>+63</b>
38%	27%	53%	70%	64%	65%	63%	57%
MILK	SS	CWT	EMA	RIB	RUMP	RBV%	IMF%
<b>+18</b>	<b>+2.6</b>	<b>+57</b>	<b>+5.5</b>	<b>-0.3</b>	<b>-0.4</b>	<b>+2.9</b>	<b>-0.4</b>
42%	75%	52%	46%	50%	55%	48%	48%

\$ INDEX VALUE	
SUP MKT	+\$108
GRASS FED	+\$105
GRAIN FED	+\$108
EU	+\$122

Quality medium maturity bull in the top 1% for Retail Beef Yield and top 5% for EMA. Pigment 100/100.

PURCHASER:..... \$.....

# Acc. DAYS WHITEFACE

**Lot 84 - DAYS IMPRESSION N186 (P)**

**N186**

**BIRTH DATE - 01/07/2017**

MELVILLE EXCEL E443 (P)  
 DAYS ELABORATE J59 (AI) (P)  
 DAYS CORA E38 (AI) (P)  
**SIRE - DAYS GALLIPOLI L142 (PP)**  
 DAYS CALIBRE G74 (PP)  
 DAYS FANCY J76 (AI) (P)  
 DAYS FANCY F38 (AI) (P)

TH 71U 719T MR HEREFORD 11X (IMP USA) (P)  
 TH 70R 11X MR HEREFORD 34Z (IMP USA) (P)  
 TH 172J 57G QUEEN MAKER 70R (P)  
**DAM - DAYS MARSHALL LASS L45 (AI) (P)**  
 DAYS CALIBRE G74 (PP)  
 DAYS MARSHALL LASS J81 (AI) (P)  
 ALLENDALE MARSHALL LASS C55 (AI) (P)

DECEMBER 2018 GROUP BREEDPLAN EBVS							
CE DIR	CE DTRS	GL	BWT	200W	400W	600W	MCW
<b>+4.9</b>	<b>+3.7</b>	<b>+0.8</b>	<b>+4.1</b>	<b>+36</b>	<b>+55</b>	<b>+79</b>	<b>+66</b>
38%	28%	53%	60%	62%	63%	60%	53%
MILK	SS	CWT	EMA	RIB	RUMP	RBV%	IMF%
<b>+17</b>	<b>+2.0</b>	<b>+58</b>	<b>+5.5</b>	<b>+1.6</b>	<b>+2.4</b>	<b>+0.3</b>	<b>+1.4</b>
39%	75%	52%	46%	50%	55%	48%	48%

\$ INDEX VALUE	
SUP MKT	+\$117
GRASS FED	+\$116
GRAIN FED	+\$143
EU	+\$129

Muscular strong topped heifer's first calf. C55 has had sons sell to \$20,000 to Shiloh Park. Top 5% EMA and IMF. Top 10% all indexes. Pigment 100/80.

PURCHASER:..... \$.....

# ALLEDALE / DAYS WHITEFACE 2019

## Acc. DAYS WHITEFACE

Lot 85 - DAYS N191 (S)

N191

BIRTH DATE - 05/07/2017

ALLEDALE YACKA (AI) (P)  
ALLEDALE ANZAC E114 (PP)  
ALLEDALE DAWN B22 (AI) (ET) (P)

SIRE - INJEMIRA ANZAC AI J188 (AI) (PP)

PEAKES ARTIST A8 (P)  
INJEMIRA PATTIE D119 (P)  
INJEMIRA PATTIE Z130 (AI) (ET) (P)

MOUNT DIFFICULT FELLIS Y12 (AI) (P)  
WIRRUNA ABERCORN (AI) (P)  
WIRRUNA GOLDEN VANITY R94 (AI) (P)

DAM - DAYS FANCY H6 (P)

ALLEDALE UTOPIA (P)  
ALLEDALE FANCY B192 (P)  
ALLEDALE FANCY Z180 (AI) (P)

DECEMBER 2018 GROUP BREEDPLAN EBVS							
CE DIR	CE DTRS	GL	BWT	200W	400W	600W	MCW
<b>-6.4</b>	<b>-1.9</b>	<b>-1.7</b>	<b>+6.7</b>	<b>+41</b>	<b>+70</b>	<b>+96</b>	<b>+90</b>
47%	37%	60%	73%	68%	68%	67%	61%
MILK	SS	CWT	EMA	RIB	RUMP	RBV%	IMF%
<b>+16</b>	<b>+3.9</b>	<b>+63</b>	<b>+6.0</b>	<b>+1.4</b>	<b>+2.1</b>	<b>+1.2</b>	<b>+0.3</b>
49%	77%	58%	53%	56%	60%	53%	55%

\$ INDEX VALUE	
SUP MKT	+\$107
GRASS FED	+\$101
GRAIN FED	+\$114
EU	+\$118

Smooth skinned muscular bull. Top 1% scrotal size. Top 5% 400 day wt and EMA. Top 10% 200 and 600 day wt. Pigment 100/100.

PURCHASER:..... \$.....

## Acc. DAYS WHITEFACE

Lot 86 - DAYS N217 (P)

N217

BIRTH DATE - 23/07/2017

ALLEDALE WATERHOUSE D1 (PP)  
DAYS CALIBRE G74 (PP)  
ALLEDALE DAWN C62 (AI) (P)  
SIRE - DAYS CAVALRY L57 (AI) (PP)  
ALLEDALE TOP NOTCH Z52 (AI) (TW) (P)  
ALLEDALE BLISSFUL B106 (P)  
ALLEDALE BLISSFUL Z28 (AI) (P)

PINE HILL CAVALIER C568 (AI) (P)  
INJEMIRA CAVALIER G032 (P)  
INJEMIRA LIONESSE B038 (AI) (H#)  
DAM - DAYS FANCY K189 (P)  
ALLEDALE VAN DIEMEN A124 (P)  
DAYS FANCY G144 (P)  
ALLEDALE FANCY D165 (P)

DECEMBER 2018 GROUP BREEDPLAN EBVS							
CE DIR	CE DTRS	GL	BWT	200W	400W	600W	MCW
<b>+2.1</b>	<b>+3.6</b>	<b>-0.9</b>	<b>+5.7</b>	<b>+38</b>	<b>+61</b>	<b>+87</b>	<b>+86</b>
38%	29%	48%	69%	63%	64%	62%	57%
MILK	SS	CWT	EMA	RIB	RUMP	RBV%	IMF%
<b>+15</b>	<b>+3.1</b>	<b>+55</b>	<b>+5.1</b>	<b>+0.6</b>	<b>+0.9</b>	<b>+0.9</b>	<b>+1.1</b>
43%	75%	51%	47%	51%	55%	48%	48%

\$ INDEX VALUE	
SUP MKT	+\$109
GRASS FED	+\$106
GRAIN FED	+\$128
EU	+\$123

Long deep bodied bull. First calf of K189 sold for \$8,000 to Inverloch Pastoral in 2018. Top 5% scrotal size. Top 10% EMA and IMF. Pigment 100/100.

PURCHASER:..... \$.....

# Acc. DAYS WHITEFACE

**Lot 87 - DAYS ILLUSTRIOUS N137 (AI) (TW) (P)**

**N137**

**BIRTH DATE - 02/06/2017**

ALLENDALE VAGABOND A74 (AI) (P)  
 ALLENDALE WATERHOUSE D1 (PP)  
 ALLENDALE MARLINE X185 (P)

ALLENDALE NATIONAL W168 (PP)  
 DUNOON DIAMANTINA D651 (AI) (S)  
 DUNOON FIRST DAY Y200 (H)

**SIRE - DAYS EXECUTIVE K168 (PP)**

ALLENDALE TIPPERARY D13 (AI) (ET) (P)  
 DAYS SILVIA G13 (AI) (P)  
 DAYS SILVIA E30 (AI) (P)

**DAM - DUNOON PRUDENCE G148 (AI) (P)**

IRONBARK 4-HOT SHOT M428 (H)  
 DUNOON PRUDENCE U031 (H)  
 DUNOON PRUDENCE S141 ET1 (AI) (ET) (H)

DECEMBER 2018 GROUP BREEDPLAN EBVS							
CE DIR	CE DTRS	GL	BWT	200W	400W	600W	MCW
<b>+1.7</b>	<b>+1.6</b>	<b>-2.1</b>	<b>+5.3</b>	<b>+40</b>	<b>+68</b>	<b>+96</b>	<b>+85</b>
43%	35%	59%	72%	64%	60%	62%	55%
MILK	SS	CWT	EMA	RIB	RUMP	RBV%	IMF%
<b>+21</b>	<b>+3.2</b>	<b>+60</b>	<b>+5.7</b>	<b>+0.1</b>	<b>-0.2</b>	<b>+1.7</b>	<b>+0.9</b>
47%	59%	53%	44%	47%	50%	45%	48%

\$ INDEX VALUE	
SUP MKT	+\$116
GRASS FED	+\$111
GRAIN FED	+\$134
EU	+\$130

Deep easy doing Executive son with good figures. Top 5% scrotal size and EMA. Top 10% 200, 400 and 600 day wt, milk and all indexes. Pigment 100/100.

PURCHASER:..... \$.....

# Acc. DAYS WHITEFACE

**Lot 88 - DAYS ICONIC N138 (PP)**

**N138**

**BIRTH DATE - 02/06/2017**

TH 71U 719T MR HEREFORD 11X (IMP USA) (P)  
 TH 70R 11X MR HEREFORD 34Z (IMP USA) (P)  
 TH 172J 57G QUEEN MAKER 70R (P)

TH 71U 719T MR HEREFORD 11X (IMP USA) (P)  
 DAYS WIZARD J204 (AI) (ET) (S)  
 ALLENDALE DAWN Z21 (AI) (P)

**SIRE - DAYS GUNPOWDER L13 (AI) (S)**

ALLENDALE WATERHOUSE D1 (PP)  
 DAYS DAWN J71 (P)  
 ALLENDALE DAWN D161 (P)

**DAM - DAYS FANCY L157 (P)**

ALLENDALE WATERHOUSE D1 (PP)  
 DAYS FANCY F59 (P)  
 ALLENDALE FANCY B167 (P)

DECEMBER 2018 GROUP BREEDPLAN EBVS							
CE DIR	CE DTRS	GL	BWT	200W	400W	600W	MCW
<b>+4.5</b>	<b>+3.1</b>	<b>-2.7</b>	<b>+2.1</b>	<b>+33</b>	<b>+55</b>	<b>+71</b>	<b>+57</b>
41%	30%	55%	71%	65%	65%	63%	56%
MILK	SS	CWT	EMA	RIB	RUMP	RBV%	IMF%
<b>+20</b>	<b>+2.6</b>	<b>+55</b>	<b>+4.5</b>	<b>+0.9</b>	<b>+1.4</b>	<b>+0.2</b>	<b>+0.9</b>
42%	76%	52%	48%	52%	57%	50%	50%

\$ INDEX VALUE	
SUP MKT	+\$104
GRASS FED	+\$102
GRAIN FED	+\$121
EU	+\$115

Homozygous Polled. Deep bodied heifer's first calf, suitable for use on heifers. Top 10% gestation length.

PURCHASER:..... \$.....

# ALLEDALE / DAYS WHITEFACE 2019

## Acc. DAYS WHITEFACE

### Lot 89 - DAYS HEADLINE N182 (TW) (S)

### N182

**BIRTH DATE - 26/06/2017**

TH 71U 719T MR HEREFORD 11X (IMP USA) (P)  
TH 70R 11X MR HEREFORD 34Z (IMP USA) (P)  
TH 172J 57G QUEEN MAKER 70R (P)

SOUTH BUKALONG WALLACE 2 (P)  
DAYS PATRICK H37 (AI) (ET) (S)  
ALLEDALE FANCY A7 (AI) (ET) (P)

**SIRE - DAYS GODFATHER L44 (AI) (S)**

SOUTH BUKALONG WALLACE 2 (P)  
DAYS FANCY H31 (AI) (ET) (P)  
ALLEDALE FANCY A7 (AI) (ET) (P)

**DAM - DAYS MOTH K120 (P)**

ALLEDALE WATERHOUSE D1 (PP)  
DAYS MOTH H50 (P)  
ALLEDALE MOTH C74 (AI) (P)

DECEMBER 2018 GROUP BREEDPLAN EBVS							
CE DIR	CE DTRS	GL	BWT	200W	400W	600W	MCW
<b>+1.5</b>	<b>+2.1</b>	<b>-2.9</b>	<b>+5.7</b>	<b>+47</b>	<b>+77</b>	<b>+109</b>	<b>+88</b>
41%	33%	53%	70%	61%	58%	59%	55%
MILK	SS	CWT	EMA	RIB	RUMP	RBV%	IMF%
<b>+18</b>	<b>+3.5</b>	<b>+73</b>	<b>+4.7</b>	<b>+0.7</b>	<b>+1.1</b>	<b>+0.7</b>	<b>+1.5</b>
43%	58%	49%	40%	44%	47%	42%	44%

\$ INDEX VALUE	
SUP MKT	+\$135
GRASS FED	+\$130
GRAIN FED	+\$164
EU	+\$148

Thick bodied bull. First calf of K120 sold for \$8,000 to Peter Tischler last year. Top 1% 200 and 400 day wt. Top 5% 500 day wt, scrotal size, carcass wt, IMF and all indexes. Pigment 100/100.

PURCHASER:..... \$.....

## Acc. DAYS WHITEFACE

### Lot 90 - DAYS N227 (P)

### N227

**BIRTH DATE - 30/07/2017**

ALLEDALE YACKA (AI) (P)  
ALLEDALE ANZAC E114 (PP)  
ALLEDALE DAWN B22 (AI) (ET) (P)

ALLEDALE SUPERSTAR B28 (AI) (ET) (S)  
DAYS WASHINGTON H35 (AI) (ET) (P)  
ALLEDALE FANCY Z59 (P)

**SIRE - INJEMIRA ANZAC AI J188 (AI) (PP)**

PEAKES ARTIST A8 (P)  
INJEMIRA PATTIE D119 (P)  
INJEMIRA PATTIE Z130 (AI) (ET) (P)

**DAM - DAYS MARLINE K90 (P)**

MERAWAH JUDGE W51 (P)  
ALLEDALE MARLINE Z65 (P)  
ALLEDALE MARLINE U155 (P)

DECEMBER 2018 GROUP BREEDPLAN EBVS							
CE DIR	CE DTRS	GL	BWT	200W	400W	600W	MCW
<b>-4.4</b>	<b>+1.2</b>	<b>+0.6</b>	<b>+6.4</b>	<b>+42</b>	<b>+64</b>	<b>+86</b>	<b>+81</b>
45%	34%	57%	73%	68%	68%	67%	61%
MILK	SS	CWT	EMA	RIB	RUMP	RBV%	IMF%
<b>+14</b>	<b>+1.2</b>	<b>+58</b>	<b>+4.8</b>	<b>+1.8</b>	<b>+2.7</b>	<b>-0.6</b>	<b>+1.4</b>
45%	77%	58%	52%	56%	60%	53%	55%

\$ INDEX VALUE	
SUP MKT	+\$91
GRASS FED	+\$87
GRAIN FED	+\$109
EU	+\$96

Smooth skinned, good hindquarterd bull in top 10% for 200 day wt, EMA and IMF. Pigment 100/100.

PURCHASER:..... \$.....

R J C E V A N S  
— & C o —

Accountants • Tax Agents • Advisors

# Avoid future storms

- Family Farm Reconstruction
- Estate Planning guidance
- Family Farm succession and protection
- Budgeting – Cash Flow & Management
- Taxation services

RJC Evans & Co have been granted an ASIC limited Australian Financial Services Licence (AFSL No. 482656) for all your self managed superannuation fund needs.

Call to make an appointment (08) 8272 2500 today. We also regularly visit rural areas. For sound investment advice contact our Financial Planner Gerrit Lombard.

Visit [rjcevans.com.au](http://rjcevans.com.au) to sign up for our monthly and quarterly newsletters

RJC Evans & Co Pty Ltd  
116 Greenhill Road UNLEY SA 5061  
ABN 40 007 804 220

T: (08) 8272 2500 F: (08) 8271 1853  
E: [rjcevans@rjcevans.com.au](mailto:rjcevans@rjcevans.com.au)  
W: [www.rjcevans.com.au](http://www.rjcevans.com.au)

*Servicing the  
community  
since 1920*



# Buyer's Instruction Slip

This slip must be completed by purchaser and handed to the Auctioneers prior to leaving the Sale.

**Please supply trading name and full address**

NAME .....

ADDRESS .....

.....

..... POSTCODE .....

PHONE ..... EMAIL .....

CONSIGN TO .....

.....

.....

INSURE FOR .....

AGENT .....

DATE ..... BUYER'S SIGNATURE .....

LOTS PURCHASED	PRICE

Please tick box if transfer required

Herefords Australia Limited  
Membership No.

.....

**NO VERBAL INSTRUCTIONS WILL BE ACCEPTED**



Days Robin Hood H38



Allendale Collingwood J29

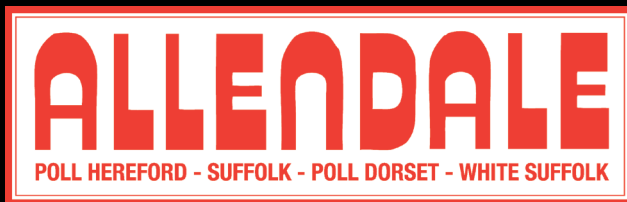




# 47<sup>TH</sup> ANNUAL PRODUCTION SALE

Friday, October 4th 2019

50 Stud Rams • 320 Flock Rams • 80 Stud Ewes



*"Red Meat Specialists"*



*Industry Leading Whiteface Genetics*



POLL DORSET - SUFFOLK - WHITE SUFFOLK - MATERNAL COMPOSITES

Agents: Landmark, Elders, Spence Dix & Co • 4% rebate to outside agents