



"RED MEAT SPECIALISTS"



INDUSTRY LEADING WHITEFACE GENETICS

22ND ANNUAL

Poll Hereford Production Sale

Monday, 24th February, 2020

1.30pm • Bordertown, South Australia



www.allendalestuds.com.au | www.dayswhiteface.com.au



SELLING AGENTS



Ross Milne	Hamilton	0408 057 558
Tom Dennis	Naracoorte	0427 975 207
Tom Penna	Adelaide	0428 854 708
Tony Wetherall	Adelaide	0427 390 001
Andy McGeoch	Orange	0418 737 470
Paul Jameson	Dubbo	0428 667 998



Gordon Wood	Strathalbyn	0408 813 215
Graeme Hampel	Bordertown	0408 838 292
Trevor Driver	Adelaide	0428 241 049
Richard Miller	Naracoorte	0428 849 327
Peter Godbolt	Albury	0457 591 929
John Settree	Dubbo	0408 297 368

4% REBATE TO OUTSIDE AGENTS

Conditions apply – see page 2.

The vendors and or their agents do not give any warranty as to errors or omissions, if any, in these particulars which they believe to be accurate when compiled.

Prospective purchasers should satisfy themselves by inspection or otherwise as to the accuracy of the particulars.



INDUSTRY LEADING WHITEFACE GENETICS



"RED MEAT SPECIALISTS"

90 PERFORMANCE RECORDED BULLS

OFFERED BY:

DAYS WHITEFACE

CONTACT

Lachlan Day

Mobile 0428 521 630 | **Email** lday@dayswhiteface.com.au

or **Graham Day** on 08 8752 2554

ALLENDALE

CONTACT

Alastair Day

Mobile 0429 782 711 | **Email** allendale@allendalestuds.com

or **Graham Day** on 08 8752 2554

SALE VENUE: Days Whiteface – 868 Naracoorte Rd, Bordertown

Buyers Information

Inspection

All cattle will be available for inspection from 11.00am on the morning of the Sale, however inspection can be arranged before hand by appointment.

Luncheon

Will be available on the property.

Delivery

While every care will be taken, no responsibility can be accepted whilst awaiting delivery.

Transfers

Please indicate on the Buyers Instruction Slip if a transfer is required.

Health

All cattle are officially government confirmed as TB free and Brucellosis free. The properties have a J-Bas 6 status for Bovine Johnes disease. All sale cattle treated with 7 in 1 (booster due Autumn 2020). All sale cattle treated with Dectomax, January 2020. All sale bulls ear notch tested as NOT persistently infected with the BVDV virus. All bulls have been vaccinated with Pestiguard and Vibrovax.

Interstate Purchasers

The Vendor agrees to hold any stock for interstate buyers until any necessary tests have been completed. Expenses incurred payable by the Purchasers. Should any cattle react, the sale will be cancelled.

Accommodation and Transport

The Auctioneers or vendors will be pleased to arrange accommodation in Adelaide or Bordertown.

Buying Orders

The Auctioneer's Stud Stock staff are well acquainted with the herd. Buying orders will be diligently executed by officers experienced in stud beef cattle practice.

Insurance

Can be arranged for transit and/or periods up to twelve (12) months cover.

Rebate

A rebate of four percent (4%) will be paid to outside agents in attendance. A rebate of one percent (1%) will be paid to outside agents not in attendance but introducing client in writing prior to sale.

BUYER'S INSTRUCTION SLIP - see Page 76

AVERAGE EBVS FOR 2018 BORN CALVES							
CE DIR	CE DTRS	GL	BWT	200W	400W	600W	MCW
+1.6	+1.6	-0.5	+4.4	+33	+55	+78	+68
MILK	SS	CWT	EMA	RIB	RUMP	RBV%	IMF%
+16	+2.1	+52	+3.3	+0.6	+0.7	+0.8	+0.5

\$ INDEX VALUE	
SSR	+\$126
NSR	+\$112
SBM	+\$126
NBT	+\$93

Welcome to our 2020 Bull Sale

Unfortunately, 2019 and early 2020 have been devastating for many around Australia. To all who have been dealing with drought and more recently devastating bushfires we hope there is a speedy recovery.

Here at Bordertown we got through on 65 percent of our annual rainfall but given the majority of it fell in the growing season our annual pastures performed well but the perennial pastures have struggled.

Everyone's crystal ball says the cattle market will be strong once it rains properly so let's hope that's soon.

This year for the first time both Studs will offer all bulls on Property. We believe this gives our clients the best possible opportunity to compare all our bulls at the one venue.

Our 2020 sale bulls present well. We believe they offer the phenotype that the market requires, backed up by some breed leading EBV's.

Our quest for genetic improvement sees us introduce genetics from all around the world. This year new US Sires Anodyne and Kickstart make a valuable contribution. They join successful homebred Sires and others sourced from across Australia.

We look forward to the opportunity of showing you our bulls at our Field Days on Tuesday February 11th, Sale Day Monday 24th February, or at any other time that suits you.

Happy to answer any questions about any of our bulls on offer, give us a call.

Regards,
Lachy and Alastair



Can't make the sale?

Register in just seven easy steps and log onto AuctionsPlus to bid from anywhere on your phone, tablet or desktop.

1

REGISTER ONLINE

FREE once off registration for all auctions.

2

VIEW CATALOGUE

Stock history, photos, videos, pedigrees and more .

3

LIMIT BID

Can't make the auction? Set your maximum bid prior to auction and let the system bid for you.

4

ENTER AUCTION

Log into the auction anytime, anywhere and bid on your mobile, tablet or computer.

5

CONTACT SELLER

Contact selling agent to arrange payment and delivery.

6

PAYMENT

Via the selling agent's terms and conditions.

7

DELIVERY

Arrange transport of livestock at your expense.

Contact AuctionsPlus on (02) 9262 4222
www.auctionsplus.com.au

Breedplan Explanation

EBV's are provided for the following traits:

CE DIR	Calving Ease Direct. Indicates how this animal influences the birth of its progeny. Positive EBV's indicate easier calving.
CE DTRS	Calving Ease Daughters. Indicates how well the animal produces daughters that have easier calving.
GL	Lower Gestation Length EBV's indicate easier calving and increased growth after birth.
SS	Scrotal size is an indicator of male fertility in regards to semen quality and quantity. SS is also positively associated with female fertility.
Birth Weight	The lower the birthweight EBV, the lighter is the birthweight potential of the progeny.
Genetic Milk	Reflects extra calf weight at weaning due to the genetic influence a sire has on his daughters milking and mothering ability.
200 Day Weight	Indicates the relative weight advantage of a sire at 8-10 months of age.
400 Day Weight	Indicates the relative weight advantage of a sire at yearling age.
600 Day Weight	The best single estimate of an animals genetic merit for growth beyond yearling age.
MWT	Mature Cow Weight is an estimate of the genetic difference in cow weight at 5 years of age.
CWT	Estimates the genetic difference in carcass weight and is adjusted to 650 days of age.
Fat Depth	Bulls with negative (-) EBV's for this trait are expected to produce relatively leaner progeny than bulls with positive (+) EBV's.
EMA	Bulls with positive (+) EBV's for this trait are expected to produce more muscular progeny than bulls with negative (-) EBV's.
Retail Beef Yield	Bulls with larger EBV's are expected to produce progeny with higher yielding carcasses.
Intramuscular Fat %	Positive EBV's indicate likelihood of more intramuscular fat.
Accuracies	The accuracy provides a measure of the reliability of the EBV. The higher the value, the less likelihood of the EBV changing with the addition of more performance records on the animal.
Selection Indexes	An index ranks an animal for single production goal - profit. They take the hard work out of knowing how much emphasis to give each of the available growth, maternal, carcass and fertility EBV's when selecting parent animals. An index is a composite EBV of traits best suited to a particular production system and target market.

Southern Self-Replacing Index: Estimates the genetic differences between animals in net profitability per cow joined in a commercial self-replacing straight bred Hereford herd targeting the domestic market. Daughters are retained for breeding and so maternal traits are of importance. Steers are slaughtered at 20 to 22 months of age to produce 300 kg carcasses with 10 mm P8 fat depth. A moderate cost is applied for cow feed costs during the annual feed shortage period.

Northern Self-Replacing Index: Estimates the genetic differences between animals in net profitability per cow joined in a commercial self-replacing herd targeting the domestic market. This index is suitable for use by both straight bred Hereford herds and in crossbreeding programs where Hereford bulls are being used over a Bos indicus based cow herd (e.g. flatback). Daughters are retained for breeding and so maternal traits are of importance. Steers are slaughtered at 20 to 22 months of age to produce 340 kg carcasses with 12 mm P8 fat depth. A high cost is applied for cow feed costs during the annual feed shortage period.

Southern Baldy Maternal Index: Estimates the genetic differences between animals in net profitability per cow joined in a commercial crossbred herd using Hereford bulls over Bos taurus females (e.g. Angus). A portion of the heifers are retained for breeding and so maternal traits are of importance. The steers and surplus heifers are destined for slaughter at 20 to 22 months of age. Steers produce 300 kg carcasses with 10 mm of P8 fat depth, while heifers produce 270 kg carcasses with 12 mm of P8 fat depth. A moderate cost is applied for cow feed costs during the annual feed shortage period.

Northern Baldy Terminal Index: Estimates the genetic differences between animals in net profitability per cow joined in a commercial crossbred herd (e.g. flatback) using Hereford bulls over Bos indicus/Tropical females (e.g. Santa Gertrudis) where all progeny (male and female) are destined for slaughter. Steers and heifers are slaughtered at 20 to 22 months of age. Steers produce 340 kg carcasses with 14 mm of P8 fat depth while heifers produce 300 kg carcasses with 17 mm of P8 fat depth.

Reference Sires



R LEADER 6964 (IMP USA) (PP)

OSAP43500058

BIRTH DATE - 05/01/2014

SCHU-LAR 5N OF 9L 3008 (IMP USA) (P)
 SCHU-LAR ON TARGET 22S (IMP USA) (ET) (P)
 SCHU-LAR 208 OF 1H 121 ET (P)

FELTONS LEGEND 242 (IMP USA) (P)
 MSU TCF REVOLUTION 4R (IMP USA) (PP)
 MSU TCF RACHAEL ET 54N (P)

SIRE - HYALITE ON TARGET 936 (P)

DAM - R MISS REVOLUTION 1009 (P)

KT TOP SECRET 1030 (P)
 HYALITE TS LASS 310 (P)
 HYALITE 215F LASS 812 (P)

JDF 16D WRANGLER 15 (P)
 R MISS WRANGLER 3007 (P)
 R MISS LASS 1741 (H#)

DECEMBER 2019 GROUP BREEDPLAN EBVS							
CE DIR	CE DTRS	GL	BWT	200W	400W	600W	MCW
+7.4	+1.9	+3.1	+1.9	+46	+68	+89	+56
82%	62%	96%	96%	94%	95%	95%	83%
MILK	SS	CWT	EMA	RIB	RUMP	RBV%	IMF%
+19	+3.7	+72	+5.7	+1.5	+1.2	+0.8	+0.7
73%	93%	81%	73%	75%	79%	70%	78%

\$ INDEX VALUE	
SSR	+\$195
NSR	+\$186
SBM	+\$197
NBT	+\$140

We are extremely pleased with the impact Leader will have on our herd. Genesis N102, the son we retained last year has bred well and the Leader daughters certainly didn't disappoint rearing their first calves in 2019. Leader is a trait leader for 200 day wt and scrotal size. He is also in the top 5% of the breed for carcase weight, EMA and all indexes. He has 5 sons on offer.

EBV in **Top 10%**

EBV in **Top 20%**

Reference Sires

GERBER ANODYNE 001A (IMP) (S)

OSA43408924A

BIRTH DATE - 27/01/2013

HH ADVANCE 767G 1ET (H)
CL 1 DOMINO 9126J 1ET (H)
CL 1 DOMINETTE 490 (H)

SIRE - KCF BENNETT 9126J R294 (P)

RRH MR FELT 3008 (IMP USA) (P)
KCF MISS 3008 N344 (P)
KCF MISS H119 L404 (P)

KCF BENNETT 3008 M326 (P)
GERBER SQUIRE 627S (P)
GERBER 24F DAGMAR 470P (P)

DAM - GERBER 627S HOLLY 096Y (P)

GERBER FIRESTORM 116K (P)
GERBER 116K HOLLY T115 (P)
GERBER 51M HOLLY 060K (P)

DECEMBER 2019 GROUP BREEDPLAN EBVS							
CE DIR	CE DTRS	GL	BWT	200W	400W	600W	MCW
+5.2	+4.5	-5.2	+3.0	+40	+67	+96	+76
53%	30%	86%	87%	81%	81%	83%	70%
MILK	SS	CWT	EMA	RIB	RUMP	RBV%	IMF%
+23	+2.4	+73	+3.4	+0.1	-1.1	+0.9	+0.4
29%	81%	66%	52%	58%	64%	55%	61%

\$ INDEX VALUE	
SSR	+\$167
NSR	+\$142
SBM	+\$178
NBT	+\$128

Gerber Anodyne is owned by performance US herd Sand Hill Farms. We selected Anodyne for his length and mobility coupled with some really impressive US performance data. His data is unique in that he is a trait leader for calving ease, birthweight, weaning and yearling weight - a rare combination. Just as impressive is his carcass data which has been derived from actual abattoir results. He is in the top 5% of the breed for rib eye and marbling. He has 15 sons on offer. Photo inside back cover.

ALLEDALE CHISEL L3 (ET) (PP)

L3

BIRTH DATE - 10/02/2015

ALLEDALE VAGABOND A74 (AI) (P)
ALLEDALE WATERHOUSE D1 (PP)
ALLEDALE MARLINE X185 (P)

SIRE - DAYS ROBIN HOOD H38 (AI) (ET) (PP)

ALLEDALE KENWORTH 2 (P)
ALLEDALE FANCY U5 (AI) (P)
ALLEDALE FANCY 248 (AI) (P)

SOUTH BUKALONG SHAW 3 (P)
SOUTH BUKALONG SHANNON 40 (PP)
SOUTH BUKALONG PETAL 88 (P)

DAM - ALLEDALE CORA D47 (AI) (P)

ALLEDALE ROBIN HOOD (AI) (P)
ALLEDALE CORA B7 (AI) (P)
ALLEDALE CORA Y208 (P)

DECEMBER 2019 GROUP BREEDPLAN EBVS							
CE DIR	CE DTRS	GL	BWT	200W	400W	600W	MCW
+5.7	+4.3	-4.0	+3.0	+40	+66	+89	+80
68%	53%	74%	92%	88%	87%	88%	79%
MILK	SS	CWT	EMA	RIB	RUMP	RBV%	IMF%
+12	+3.5	+65	+6.0	+1.5	+3.6	+0.5	+1.0
61%	88%	78%	69%	73%	77%	69%	75%

\$ INDEX VALUE	
SSR	+\$184
NSR	+\$186
SBM	+\$186
NBT	+\$136

Chisel L3 is an early maturing, muscular bull with a strong head and an excellent eye set. His dam D47 has had 5 sons used in our stud. D47's sons at auction have sold to \$20,000 for Chisel L8 at Wodonga to Howquadales and 5 have averaged \$15,000. L3 is the sire of 10 bulls in this years sale. Photo inside back cover.

EBV in **Top 10%**

EBV in **Top 20%**

Reference Sires



ALLEDALE CHISEL L8 (ET) (S)

L8

BIRTH DATE - 15/02/2015

KCF BENNETT 3008 M326 (P)
SHF WONDER M326 W18 ET (P)
SHF GOVERNESS 236G L37 (P)

SOUTH BUKALONG SHAW 3 (P)
SOUTH BUKALONG SHANNON 40 (PP)
SOUTH BUKALONG PETAL 88 (P)

SIRE - REMITALL-WEST GAME DAY ET 74Y (IMP CAN) (P)
REMITALL PATRIOT ET 13P (IMP CAN) (P)
REMITALL MARVEL 78T (IMP CAN) (P)
REMITALL MAVREL 105N (P)

DAM - ALLEDALE CORA D47 (AI) (P)
ALLEDALE ROBIN HOOD (AI) (P)
ALLEDALE CORA B7 (AI) (P)
ALLEDALE CORA Y208 (P)

DECEMBER 2019 GROUP BREEDPLAN EBVS							
CE DIR	CE DTRS	GL	BWT	200W	400W	600W	MCW
+0.8	+4.0	-2.2	+4.6	+47	+81	+109	+95
62%	48%	79%	87%	82%	82%	84%	75%
MILK	SS	CWT	EMA	RIB	RUMP	RBV%	IMF%
+19	+5.3	+74	+3.3	+0.0	-0.6	+1.1	+0.3
59%	83%	71%	61%	66%	71%	63%	68%

\$ INDEX VALUE	
SSR	+\$185
NSR	+\$165
SBM	+\$179
NBT	+\$126

Chisel L8 is a long bodied, correct bull sold at Wodonga for \$20,000 to Howquadales. His dam D47 has had 5 sons used in our stud. D47's 5 sons at auction have averaged \$15,000.

EBV in **Top 10%**

EBV in **Top 20%**

Reference Sires



BJS Photography

ALLENDALE GAMBLER L143 (P)

L143

BIRTH DATE - 02/07/2015

ALLENDALE YACKA (AI) (P)
 ALLENDALE ANZAC E114 (PP)
 ALLENDALE DAWN B22 (AI) (ET) (P)

SIRE - ALLENDALE CHINCHILLA J23 (AI) (PP)
 ALLENDALE TOP NOTCH Z52 (AI) (TW) (P)
 ALLENDALE FANCY B115 (P)
 ALLENDALE FANCY Z13 (P)

DEBARRY EDEN (PP)
 ALLENDALE WALHALLOW D149 (AI) (P)
 ALLENDALE CORA W35 (P)
DAM - ALLENDALE LAST DAY F57 (PP)
 ALLENDALE VENGEANCE A49 (AI) (P)
 ALLENDALE LAST DAY D45 (AI) (P)
 ALLENDALE LAST DAY A254 (P)

DECEMBER 2019 GROUP BREEDPLAN EBVS							
CE DIR	CE DTRS	GL	BWT	200W	400W	600W	MCW
-3.6	-0.7	+4.3	+7.6	+39	+62	+88	+66
64%	42%	90%	93%	90%	88%	88%	77%
MILK	SS	CWT	EMA	RIB	RUMP	RBV%	IMF%
+15	+2.7	+58	+8.2	+2.0	+3.1	+1.0	+1.6
53%	90%	75%	64%	69%	75%	66%	71%

\$ INDEX VALUE	
SSR	+\$153
NSR	+\$143
SBM	+\$139
NBT	+\$96

Gambler has 10 sons in this sale, 6 from Allendale and 4 from Day's. Gambler has passed on his outstanding carcass attributes. Sold at Dubbo in 2018 for \$40,000 to Kerlson Pines, Gambler has had an impact wherever he's been used.

EBV in **Top 10%**

EBV in **Top 20%**



Supporting your business.

Next time you are thinking about a partner for your livestock business, think Elders. Marketing over 1.72 million cattle and 9.5 million sheep each year by our livestock specialists located across Australia and overseas, ensures we have access to the relevant information and trends that will affect your business.

Our team will assist you to select the right sales option, whether that be through online or traditional channels, to ensure the best price is achieved. We can also work with you on improving productivity to gain more meat, wool or milk from your stock, as well as sourcing stock or land, or providing finance options to maintain cash flow. That's why Elders is the right choice to help you make more possible.

For more information contact:

Tom Dennis 0427 975 207

Ross Milne 0408 057 558

Tony Wetherall 0427 390 001

Andy McGeoch (NSW) 0418 737 470

elders.com.au



ULT340 12/15

Acc. DAYS WHITEFACE

Lot 1 - DAYS IMPERIAL P183 (AI) (PP)

P183

BIRTH DATE - 04/06/2018

POLL STATUS - HOMOZYGOUS

PIGMENT - 100/100

ALLENDALE VAGABOND A74 (AI) (P)
 ALLENDALE WATERHOUSE D1 (PP)
 ALLENDALE MARLINE X185 (P)

TH 71U 719T MR HEREFORD 11X (IMP USA) (P)
 TH 70R 11X MR HEREFORD 34Z (IMP USA) (P)
 TH 172J 57G QUEEN MAKER 70R (P)

SIRE - DAYS EXECUTIVE K168 (PP)

DAM - DAYS FANCY K110 (AI) (PP)

ALLENDALE TIPPERARY D13 (AI) (ET) (P)
 DAYS SILVIA G13 (AI) (P)
 DAYS SILVIA E30 (AI) (P)

DAYS WIZARD F5 (AI) (ET) (S)
 DAYS FANCY H166 (P)
 ALLENDALE FANCY A230 (P)

DECEMBER 2019 GROUP BREEDPLAN EBVS							
CE DIR	CE DTRS	GL	BWT	200W	400W	600W	MCW
+2.1	+3.2	-1.6	+4.8	+39	+65	+90	+66
44%	35%	76%	74%	69%	68%	68%	62%
MILK	SS	CWT	EMA	RIB	RUMP	RBV%	IMF%
+21	+4.1	+59	+6.3	+1.2	+1.8	+0.9	+1.0
50%	78%	58%	52%	56%	60%	54%	56%

\$ INDEX VALUE	
SSR	+\$169
NSR	+\$156
SBM	+\$169
NBT	+\$119

Imperial P183 is a long bodied smooth skinned bull with plenty of muscle which is backed up by his muscle EBV. His sire Executive sold to Talbalba and Injemira for \$45,000 at Dubbo. Fancy K110 is developing into one of our best cows with her 2017 drop son retained and a cracking 2019 bull calf. P183 was used over cows in our 2019 joining and we are retaining semen for within herd use only.

PURCHASER:..... \$.....



LOT 1

EBV in Top 10%

EBV in Top 20%

Acc. DAYS WHITEFACE

Lot 2 - DAYS HALLMARK P163 (AI) (ET) (PP)

P163

BIRTH DATE - 01/06/2018

POLL STATUS - HOMOZYGOUS

PIGMENT - 80/100

ALLENDALE ANZAC E114 (PP)
 ALLENDALE CHINCHILLA J23 (AI) (PP)
 ALLENDALE FANCY B115 (P)

SOUTH BUKALONG WALKER 6 (AI) (P)
 SOUTH BUKALONG WALLACE 2 (P)
 SOUTH BUKALONG VICTORIA 152 (P)

SIRE - ALLENDALE GAMBLER L143 (P)

DAM - DUNOON UNA H510 (AI) (P)

ALLENDALE WALHALLOW D149 (AI) (P)
 ALLENDALE LAST DAY F57 (PP)
 ALLENDALE LAST DAY D45 (AI) (P)

ALLENDALE NATIONAL W168 (PP)
 DUNOON UNA D532 (AI) (P)
 DUNOON UNA Y160 (H)

DECEMBER 2019 GROUP BREEDPLAN EBVS							
CE DIR	CE DTRS	GL	BWT	200W	400W	600W	MCW
+3.6	+3.0	+0.1	+4.8	+41	+66	+94	+62
45%	35%	64%	72%	67%	66%	66%	59%
MILK	SS	CWT	EMA	RIB	RUMP	RBV%	IMF%
+17	+4.6	+68	+6.5	+2.4	+3.9	+0.5	+2.0
52%	74%	57%	50%	54%	58%	51%	55%

\$ INDEX VALUE	
SSR	+\$205
NSR	+\$198
SBM	+\$199
NBT	+\$138

This muscular Gambler son has a cracking set of data including a top 1% IMF figure. Una H510 is one of our lead cows, an ET donor who has 4 other sons in the sale including Lot 5. P163 was used in the stud on cows in 2019 and we are retaining semen for within herd use only.

PURCHASER:..... \$.....



LOT 2

EBV in **Top 10%**

EBV in **Top 20%**

Acc. DAYS WHITEFACE

Lot 3 - DAYS INDICATOR P155 (AI) (S)

P155

BIRTH DATE - 31/05/2018

POLL STATUS - SCURRED

PIGMENT - 100/100

CL 1 DOMINO 9126J 1ET (H)

ALLENDALE VAGABOND A74 (AI) (P)

KCF BENNETT 9126J R294 (P)

ALLENDALE WATERHOUSE D1 (PP)

KCF MISS 3008 N344 (P)

ALLENDALE MARLINE X185 (P)

SIRE - GERBER ANODYNE 001A (IMP) (S)

DAM - DAYS DAWN H71 (P)

GERBER SQUIRE 627S (P)

ALLENDALE ROBIN HOOD Z239 (P)

GERBER 627S HOLLY 096Y (P)

ALLENDALE DAWN C62 (AI) (P)

GERBER 116K HOLLY T115 (P)

ALLENDALE DAWN A150 (AI) (ET) (P)

DECEMBER 2019 GROUP BREEDPLAN EBVS							
CE DIR	CE DTRS	GL	BWT	200W	400W	600W	MCW
+6.2	+7.1	-3.8	+3.0	+37	+67	+93	+95
41%	32%	74%	65%	64%	65%	63%	57%
MILK	SS	CWT	EMA	RIB	RUMP	RBV%	IMF%
+18	+4.2	+66	+4.1	+0.3	+0.1	+0.5	+1.1
43%	74%	54%	47%	52%	56%	50%	49%

\$ INDEX VALUE	
SSR	+\$166
NSR	+\$151
SBM	+\$178
NBT	+\$135

The first of our Gerber Anodyne's. We really like the length, outlook and testicular development of this bull. His data shows a great birth to growth spread. Dawn H71 is a full sister to the \$90,000 Calibre G74. Her Leader son last year sold for \$9,000 to the Tischlers. We used P155 on cows last year and are retaining semen for within herd use only.

PURCHASER:..... \$.....



LOT 3

EBV in Top 10%

EBV in Top 20%

Acc. DAYS WHITEFACE

Lot 4 - DAYS JACKEROO P098 (AI) (PP)

P098

BIRTH DATE - 17/05/2018

POLL STATUS - HOMOZYGOUS

PIGMENT - 100/100

SCHU-LAR ON TARGET 22S (IMP USA) (ET) (P)

ALLEDALE VAGABOND A74 (AI) (P)

HYALITE ON TARGET 936 (P)

ALLEDALE WATERHOUSE D1 (PP)

HYALITE TS LASS 310 (P)

ALLEDALE MARLINE X185 (P)

SIRE - R LEADER 6964 (IMP USA) (PP)

DAM - DAYS FLORRIE K161 (P)

MSU TCF REVOLUTION 4R (IMP USA) (PP)

DAYS ROBIN HOOD E124 (P)

R MISS REVOLUTION 1009 (P)

DAYS FLORRIE G108 (P)

R MISS WRANGLER 3007 (P)

DAYS FLORRIE E56 (AI) (P)

DECEMBER 2019 GROUP BREEDPLAN EBVS							
CE DIR	CE DTRS	GL	BWT	200W	400W	600W	MCW
+5.4	+4.2	+1.0	+3.6	+44	+71	+96	+73
50%	40%	75%	73%	69%	69%	67%	61%
MILK	SS	CWT	EMA	RIB	RUMP	RBV%	IMF%
+21	+5.6	+71	+6.8	+0.5	+0.4	+1.6	+0.7
50%	77%	57%	52%	55%	59%	53%	54%

\$ INDEX VALUE	
SSR	+\$197
NSR	+\$184
SBM	+\$197
NBT	+\$140

A long bodied smooth skinned bull with great data including being in the top 1% of the breed for scrotal size, EMA and both self-replacing indexes. We used him on heifers, and he is also being progeny tested in a commercial herd. Please ask us if you would like more information on this. Semen being retained for in herd use only.

PURCHASER:..... \$.....



LOT 4

EBV in **Top 10%**

EBV in **Top 20%**

Acc. DAYS WHITEFACE

Lot 5 - DAYS HALLMARK P017 (AI) (ET) (S)

P017

BIRTH DATE - 22/04/2018

POLL STATUS - SCURRED

PIGMENT - 85/70

SCHU-LAR ON TARGET 22S (IMP USA) (ET) (P)

SOUTH BUKALONG WALKER 6 (AI) (P)

HYALITE ON TARGET 936 (P)

SOUTH BUKALONG WALLACE 2 (P)

HYALITE TS LASS 310 (P)

SOUTH BUKALONG VICTORIA 152 (P)

SIRE - R LEADER 6964 (IMP USA) (PP)

DAM - DUNOON UNA H510 (AI) (P)

MSU TCF REVOLUTION 4R (IMP USA) (PP)

ALLENDALE NATIONAL W168 (PP)

R MISS REVOLUTION 1009 (P)

DUNOON UNA D532 (AI) (P)

R MISS WRANGLER 3007 (P)

DUNOON UNA Y160 (H)

DECEMBER 2019 GROUP BREEDPLAN EBVS							
CE DIR	CE DTRS	GL	BWT	200W	400W	600W	MCW
+6.5	+3.6	+1.0	+4.1	+46	+72	+98	+59
51%	42%	65%	73%	68%	68%	67%	60%
MILK	SS	CWT	EMA	RIB	RUMP	RBV%	IMF%
+17	+3.8	+74	+5.5	+1.9	+2.3	+0.8	+1.5
55%	71%	58%	51%	55%	58%	51%	55%

\$ INDEX VALUE	
SSR	+\$217
NSR	+\$207
SBM	+\$218
NBT	+\$151

An outstanding carcass on this performance bull who is our highest indexing bull in the catalogue. He has four maternal siblings in the sale including Lot 2. P017 was used on cows and semen is being retained for within herd use only.

PURCHASER:..... \$.....



LOT 5

EBV in **Top 10%**

EBV in **Top 20%**

Acc. DAYS WHITEFACE

Lot 6 - DAYS DEMONSTRATOR P010 (AI) (ET) (PP)

P010

BIRTH DATE - 29/04/2018

POLL STATUS - HETEROZYGOUS

PIGMENT - 100/100

ALLENDALE YACKA (AI) (P)

DEBARRY EDEN (PP)

ALLENDALE ANZAC E114 (PP)

ALLENDALE TIPPERARY D13 (AI) (ET) (P)

ALLENDALE DAWN B22 (AI) (ET) (P)

ALLENDALE FANCY U64 (AI) (P)

SIRE - INJEMIRA ANZAC H006 (PP)

DAM - DAYS CORA F76 (P)

PINE HILL ERIK Y601 (AI) (S)

OKAWA COMMODORE 020076 (IMP NZL) (P)

INJEMIRA MARINDA B028 (AI) (P)

ALLENDALE CORA D26 (AI) (P)

INJEMIRA MARINDA Y065 (H)

ALLENDALE A1 (P)

DECEMBER 2019 GROUP BREEDPLAN EBVS							
CE DIR	CE DTRS	GL	BWT	200W	400W	600W	MCW
-2.3	-0.1	-0.2	+5.9	+45	+68	+91	+74
49%	40%	65%	74%	70%	69%	69%	63%
MILK	SS	CWT	EMA	RIB	RUMP	RBV%	IMF%
+20	+3.0	+59	+3.7	+1.4	+2.0	+0.5	+0.1
61%	73%	59%	51%	57%	60%	54%	58%

\$ INDEX VALUE	
SSR	+\$141
NSR	+\$126
SBM	+\$131
NBT	+\$92

Strong headed, deep bodied bull with lots of early growth. Anzac H006 is a trait leader for 200, 400 and 600 day wt, milk and scrotal size. 3 sons of Cora F76 have averaged \$11,500 including a Dubbo performance class winner.

PURCHASER:..... \$.....



LOT 6

EBV in **Top 10%**

EBV in **Top 20%**

Acc. ALLEDALE

Lot 7 - ALLEDALE FCF JUSTIN P108 (AI) (P)

P108

BIRTH DATE - 20/05/2018

POLL STATUS - HETEROZYGOUS

PIGMENT - 100/100

SHF WONDER M326 W18 ET (P)
 REMITALL-WEST GAME DAY ET 74Y (IMP CAN) (P)
 REMITALL MARVEL 78T (IMP CAN) (P)

ALLEDALE WATERHOUSE D1 (PP)
 ALLEDALE WASHINGTON G82 (ET) (P)
 ALLEDALE FANCY Z59 (P)

SIRE - ALLEDALE CHISEL L8 (ET) (S)
 SOUTH BUKALONG SHANNON 40 (PP)
 ALLEDALE CORA D47 (AI) (P)
 ALLEDALE CORA B7 (AI) (P)

DAM - ALLEDALE FCF FANCY J80 (TW) (P)
 WIRRUNA ABERCORN (AI) (P)
 ALLEDALE FANCY D207 (AI) (P)
 ALLEDALE FANCY U66 (AI) (P)

DECEMBER 2019 GROUP BREEDPLAN EBVS							
CE DIR	CE DTRS	GL	BWT	200W	400W	600W	MCW
-3.7	+1.9	+0.9	+5.8	+40	+72	+98	+92
42%	34%	72%	71%	66%	66%	65%	59%
MILK	SS	CWT	EMA	RIB	RUMP	RBV%	IMF%
+19	+3.9	+61	+5.3	+1.5	+2.3	+0.2	+1.6
47%	76%	54%	48%	53%	57%	50%	51%

\$ INDEX VALUE	
SSR	+\$156
NSR	+\$140
SBM	+\$142
NBT	+\$103

A very good bull that was used heavily in our stud last year. The type, pedigree and figures of this bull make him a top prospect. Retaining semen for within herd use only.

PURCHASER:..... \$.....



EJS

LOT 7

EBV in Top 10%

EBV in Top 20%

Acc. ALLENDALE

Lot 8 - ALLENDALE HIGH PRESSURE P113 (AI) (PP)

P113

BIRTH DATE - 24/05/2018

POLL STATUS - HOMOZYGOUS

PIGMENT - 100/100

ALLENDALE ANZAC E114 (PP)

SHF WONDER M326 W18 ET (P)

ALLENDALE CHINCHILLA J23 (AI) (PP)

REMITALL-WEST GAME DAY ET 74Y (IMP CAN) (P)

ALLENDALE FANCY B115 (P)

REMITALL MARVEL 78T (IMP CAN) (P)

SIRE - ALLENDALE GAMBLER L143 (P)

DAM - ALLENDALE FANCY K59 (AI) (P)

ALLENDALE WALHOLLOW D149 (AI) (P)

TYCOLAH GOLD RUSH (S)

ALLENDALE LAST DAY F57 (PP)

ALLENDALE FANCY F96 (AI) (P)

ALLENDALE LAST DAY D45 (AI) (P)

ALLENDALE FANCY W187 (P)

DECEMBER 2019 GROUP BREEDPLAN EBVS							
CE DIR	CE DTRS	GL	BWT	200W	400W	600W	MCW
-2.4	+2.0	+4.1	+7.6	+39	+73	+103	+95
42%	31%	75%	73%	68%	67%	66%	60%
MILK	SS	CWT	EMA	RIB	RUMP	RBV%	IMF%
+20	+5.7	+62	+5.7	+1.2	+1.5	+0.4	+1.4
46%	77%	55%	49%	53%	58%	51%	52%

\$ INDEX VALUE	
SSR	+\$165
NSR	+\$142
SBM	+\$152
NBT	+\$108

Strong topped, muscular bull from a good RWGD daughter. Used in our stud in 2019.

PURCHASER:..... \$.....



EBV in **Top 10%**

EBV in **Top 20%**

Acc. ALLEDALE

Lot 9 - ALLEDALE DALBY P123 (ET) (PP)

P123

BIRTH DATE - 28/05/2018

POLL STATUS - HOMOZYGOUS

PIGMENT - 100/100

ALLEDALE ANZAC E114 (PP)
 ALLEDALE CHINCHILLA J23 (AI) (PP)
 ALLEDALE FANCY B115 (P)

DEBARRY EDEN (PP)
 ALLEDALE ROBIN HOOD C30 (AI) (ET) (P)
 ALLEDALE FANCY U5 (AI) (P)

SIRE - ALLEDALE GAMBLER L143 (P)
 ALLEDALE WALHALLOW D149 (AI) (P)
 ALLEDALE LAST DAY F57 (PP)
 ALLEDALE LAST DAY D45 (AI) (P)

DAM - ALLEDALE GLADIOLA E31 (P)
 ALLEDALE SHAMROCK 3 (AI) (S)
 ALLEDALE GLADIOLA C108 (P)
 ALLEDALE GLADIOLA A51 (P)

DECEMBER 2019 GROUP BREEDPLAN EBVS							
CE DIR	CE DTRS	GL	BWT	200W	400W	600W	MCW
+0.7	+2.6	+2.0	+4.5	+30	+48	+66	+30
43%	32%	62%	72%	67%	66%	66%	60%
MILK	SS	CWT	EMA	RIB	RUMP	RBV%	IMF%
+18	+2.4	+43	+6.4	+1.5	+2.2	+1.3	+1.0
53%	74%	55%	48%	53%	57%	51%	53%

\$ INDEX VALUE	
SSR	+\$144
NSR	+\$135
SBM	+\$138
NBT	+\$90

A very thick, soft, well muscled bull, P123 is from a hard working Robin Hood C30 daughter. We used P123 in our stud in 2019

PURCHASER:..... \$.....



EJS

LOT 9

EBV in Top 10%

EBV in Top 20%

Acc. ALLENDALE

Lot 10 - ALLENDALE JACKAL P135 (ET) (S)

P135

BIRTH DATE - 31/05/2018

POLL STATUS - SCURRED

PIGMENT - 100/100

ALLENDALE YALLAROI 2 (AI) (TW) (PP)

SHF WONDER M326 W18 ET (P)

ALLENDALE CHISEL G161 (P)

REMITALL-WEST GAME DAY ET 74Y (IMP CAN) (P)

ALLENDALE CORA D47 (AI) (P)

REMITALL MARVEL 78T (IMP CAN) (P)

SIRE - ALLENDALE ANZAC M009 (ET) (PP)

DAM - ALLENDALE KERRY MAID L113 (AI) (P)

ALLENDALE NATIONAL W168 (PP)

ALLENDALE SUPERSTAR B26 (AI) (ET) (P)

ALLENDALE DAWN B22 (AI) (ET) (P)

ALLENDALE KERRY MAID F7 (P)

ALLENDALE DAWN T60 (AI) (P)

WIRANYA KERRY MAID W28 (S)

DECEMBER 2019 GROUP BREEDPLAN EBVS

CE DIR	CE DTRS	GL	BWT	200W	400W	600W	MCW
+2.0	+3.8	-0.6	+3.3	+40	+68	+90	+77
42%	34%	60%	70%	65%	63%	63%	56%
MILK	SS	CWT	EMA	RIB	RUMP	RBY%	IMF%
+21	+3.8	+62	+3.1	+0.9	+1.3	+0.1	+0.7
49%	72%	52%	46%	50%	54%	48%	49%

\$ INDEX VALUE

SSR	+\$154
NSR	+\$139
SBM	+\$155
NBT	+\$113

A long, well balanced bull. Used in our stud in 2019. P135 has an excellent pedigree. Dam L113 is also the dam of the interesting lot 22 bull.

PURCHASER:..... \$.....



EBV in **Top 10%**

EBV in **Top 20%**

Acc. ALLENDALE

Lot 11 - ALLENDALE GALLIPOLI P002 (AI) (ET) (PP)

P002

BIRTH DATE - 22/03/2018

POLL STATUS - HOMOZYGOUS

PIGMENT - 100/100

SOUTH BUKALONG WALKER 6 (AI) (P)
 SOUTH BUKALONG WALLACE 2 (P)
 SOUTH BUKALONG VICTORIA 152 (P)

EBBX CALGARY (AI) (ET) (P)
 DEBARRY CALGARY C58 (P)
 DEBARRY DALLAS X75 (AI) (P)

SIRE - GLENTREVOR WALLACE H427 (AI) (PP)

DAM - ALLENDALE DAWN H183 (ET) (PP)

GLENTREVOR ROCKET D016 (AI) (P)
 GLENTREVOR MARITANA F240 (P)
 GLENTREVOR MARITANA C925 (AI) (P)

ALLENDALE NATIONAL W168 (PP)
 ALLENDALE DAWN B22 (AI) (ET) (P)
 ALLENDALE DAWN T60 (AI) (P)

DECEMBER 2019 GROUP BREEDPLAN EBVS							
CE DIR	CE DTRS	GL	BWT	200W	400W	600W	MCW
+10.3	+8.7	-1.1	+0.5	+29	+50	+66	+51
52%	43%	62%	71%	67%	67%	66%	60%
MILK	SS	CWT	EMA	RIB	RUMP	RBY%	IMF%
+14	+2.0	+52	+3.0	+2.0	+3.1	-0.5	+1.6
58%	74%	57%	52%	55%	59%	53%	57%

\$ INDEX VALUE	
SSR	+\$153
NSR	+\$151
SBM	+\$173
NBT	+\$127

Long bull used on stud heifers in 2019. Dam H183 has bred well selling bulls to \$16,000 to Gary Bowyer and \$8,000 to Mahwallock East. Note Granddam B22 is the mother of our Anzac bulls.

PURCHASER: \$.....



EBV in Top 10%

EBV in Top 20%

Acc. ALLENDALE

Lot 12 - ALLENDALE GALLIPOLI P011 (AI) (ET) (PP)

P011

BIRTH DATE - 28/03/2018

POLL STATUS - HOMOZYGOUS

PIGMENT - 100/100

QUAMBY PLAINS STOCKMASTER Y118 (P)
 WIRRUNA FLETCHER F214 (P)
 WIRRUNA LAST DAY B16 (AI) (H#)

EBBX CALGARY (AI) (ET) (P)
 DEBARRY CALGARY C58 (P)
 DEBARRY DALLAS X75 (AI) (P)

SIRE - WIRRUNA KATNOOK K74 (AI) (P)

DAM - ALLENDALE DAWN H183 (ET) (PP)

WIRRUNA DAFFY D1 (P)
 WIRRUNA VICTORIA G7 (AI) (P)
 WIRRUNA VICTORIA E112 (AI) (ET) (P)

ALLENDALE NATIONAL W168 (PP)
 ALLENDALE DAWN B22 (AI) (ET) (P)
 ALLENDALE DAWN T60 (AI) (P)

DECEMBER 2019 GROUP BREEDPLAN EBVS							
CE DIR	CE DTRS	GL	BWT	200W	400W	600W	MCW
+1.1	+2.8	-2.5	+4.0	+32	+46	+61	+54
49%	39%	63%	71%	67%	67%	67%	61%
MILK	SS	CWT	EMA	RIB	RUMP	RBV%	IMF%
+10	+2.7	+42	+6.6	+0.9	+0.8	+1.5	+1.4
54%	75%	61%	54%	59%	62%	53%	60%

\$ INDEX VALUE	
SSR	+\$122
NSR	+\$122
SBM	+\$121
NBT	+\$90

Deep bodied bull with good carcass figures. Dam H183 has bred well selling bulls to \$16,000 to Gary Bowyer and \$8,000 to Mahwallock East. Note Granddam B22 is the mother of our Anzac bulls.

PURCHASER:..... \$.....



EBV in **Top 10%**

EBV in **Top 20%**

Acc. DAYS WHITEFACE

Lot 13 - DAYS JFK P046 (AI) (PP)

P046

BIRTH DATE - 05/05/2018

POLL STATUS - HOMOZYGOUS

PIGMENT - 100/100

CL 1 DOMINO 9126J 1ET (H)

TH 70R 11X MR HEREFORD 34Z (IMP USA) (P)

KCF BENNETT 9126J R294 (P)

DAYS FORESIGHT K134 (AI) (PP)

KCF MISS 3008 N344 (P)

DAYS FANCY H161 (P)

SIRE - GERBER ANODYNE 001A (IMP) (S)

DAM - DAYS SILVIA M123 (P)

GERBER SQUIRE 627S (P)

DAYS WASHINGTON H35 (AI) (ET) (P)

GERBER 627S HOLLY 096Y (P)

DAYS SILVIA K97 (P)

GERBER 116K HOLLY T115 (P)

ALLEDALE SILVIA C143 (P)

DECEMBER 2019 GROUP BREEDPLAN EBVS							
CE DIR	CE DTRS	GL	BWT	200W	400W	600W	MCW
+5.6		-1.2	+3.1	+36	+64	+94	+75
35%		72%	72%	65%	66%	69%	59%
MILK	SS	CWT	EMA	RIB	RUMP	RBV%	IMF%
+18	+3.6	+70	+4.9	+0.9	+0.7	+1.2	+0.3
32%	74%	54%	44%	50%	54%	47%	46%

\$ INDEX VALUE	
SSR	+\$178
NSR	+\$163
SBM	+\$185
NBT	+\$132

A quality, deep bodied, strong headed heifers first calf with balanced figures including a really good birth to growth spread.

PURCHASER: \$.....



EBV in Top 10%

EBV in Top 20%

Acc. DAYS WHITEFACE

Lot 14 - DAYS JERILDERIE P052 (AI) (P)

P052

BIRTH DATE - 06/05/2018

POLL STATUS - HETEROZYGOUS

PIGMENT - 100/100

SCHU-LAR ON TARGET 22S (IMP USA) (ET) (P)
 HYALITE ON TARGET 936 (P)
 HYALITE TS LASS 310 (P)

SOUTH BUKALONG WALLACE 2 (P)
 DAYS PATRICK H37 (AI) (ET) (S)
 ALLEDALE FANCY A7 (AI) (ET) (P)

SIRE - R LEADER 6964 (IMP USA) (PP)
 MSU TCF REVOLUTION 4R (IMP USA) (PP)
 R MISS REVOLUTION 1009 (P)
 R MISS WRANGLER 3007 (P)

DAM - DAYS DALLAS M060 (AI) (P)
 WIRRUNA ABERCORN (AI) (P)
 DAYS DALLAS (ET) (P)
 DEBARRY DALLAS X75 (AI) (P)

DECEMBER 2019 GROUP BREEDPLAN EBVS							
CE DIR	CE DTRS	GL	BWT	200W	400W	600W	MCW
+3.2	+1.2	-0.7	+4.1	+45	+68	+95	+73
49%	38%	75%	73%	69%	70%	72%	64%
MILK	SS	CWT	EMA	RIB	RUMP	RBV%	IMF%
+20	+3.3	+69	+4.1	+0.6	+0.6	+0.8	+0.4
50%	77%	59%	51%	55%	59%	52%	54%

\$ INDEX VALUE	
SSR	+\$165
NSR	+\$149
SBM	+\$169
NBT	+\$122

Long, deep bodied, smooth skinned heifers first calf in the top 5% for 200 day wt.

PURCHASER: \$



LOT 14

EBV in **Top 10%**

EBV in **Top 20%**

Acc. DAYS WHITEFACE

Lot 15 - DAYS HERCULES P109 (AI) (PP)

P109

BIRTH DATE - 21/05/2018

POLL STATUS - HOMOZYGOUS

PIGMENT - 100/100

SCHU-LAR ON TARGET 22S (IMP USA) (ET) (P)

ALLENDALE WATERHOUSE D1 (PP)

HYALITE ON TARGET 936 (P)

DAYS CALIBRE G74 (PP)

HYALITE TS LASS 310 (P)

ALLENDALE DAWN C62 (AI) (P)

SIRE - R LEADER 6964 (IMP USA) (PP)

DAM - DAYS DALLAS K42 (AI) (P)

MSU TCF REVOLUTION 4R (IMP USA) (PP)

WIRRUNA ABERCORN (AI) (P)

R MISS REVOLUTION 1009 (P)

DAYS DALLAS (ET) (P)

R MISS WRANGLER 3007 (P)

DEBARRY DALLAS X75 (AI) (P)

DECEMBER 2019 GROUP BREEDPLAN EBVS							
CE DIR	CE DTRS	GL	BWT	200W	400W	600W	MCW
+4.2	+3.1	+0.3	+3.0	+38	+55	+73	+55
50%	40%	76%	73%	68%	65%	66%	60%
MILK	SS	CWT	EMA	RIB	RUMP	RBV%	IMF%
+17	+3.1	+52	+4.9	+1.3	+1.9	+0.5	+0.9
51%	63%	57%	49%	53%	56%	50%	54%

\$ INDEX VALUE	
SSR	+\$149
NSR	+\$143
SBM	+\$151
NBT	+\$109

Moderate framed, thick bodied good headed bull.

PURCHASER:..... \$.....

Lot 16 - DAYS INFINITE P065 (AI) (S)

P065

BIRTH DATE - 08/05/2018

POLL STATUS - SCURRED

PIGMENT - 100/100

CL 1 DOMINO 9126J 1ET (H)

ALLENDALE WATERHOUSE D1 (PP)

KCF BENNETT 9126J R294 (P)

DAYS ROBIN HOOD H38 (AI) (ET) (PP)

KCF MISS 3008 N344 (P)

ALLENDALE FANCY U5 (AI) (P)

SIRE - GERBER ANODYNE 001A (IMP) (S)

DAM - DAYS COLLEEN L35 (P)

GERBER SQUIRE 627S (P)

OKAWA COMMODORE 020076 (IMP NZL) (P)

GERBER 627S HOLLY 096Y (P)

DAYS COLLEEN J17 (AI) (ET) (P)

GERBER 116K HOLLY T115 (P)

MERAWAH COLLEEN C155 (PP)

DECEMBER 2019 GROUP BREEDPLAN EBVS							
CE DIR	CE DTRS	GL	BWT	200W	400W	600W	MCW
+4.5	+3.9	-4.2	+2.2	+35	+61	+83	+71
39%	29%	73%	72%	66%	66%	70%	61%
MILK	SS	CWT	EMA	RIB	RUMP	RBV%	IMF%
+20	+1.3	+66	+5.0	+0.8	+1.1	+1.6	-0.5
38%	75%	56%	46%	51%	56%	49%	48%

\$ INDEX VALUE	
SSR	+\$150
NSR	+\$141
SBM	+\$159
NBT	+\$116

Long correct deep bodied bull with a good hindquarter.

PURCHASER:..... \$.....

EBV in Top 10%

EBV in Top 20%

Strong History, Bright Future



- Professionalism • Commitment
- Network • Presentation

Our passion for your business drives results.

- **Gordon Wood** 0408 813 215 • **Leo Redden** 0408 806 021
- **Richard Miller** 0428 849 327

landmark.com.au

LANDMARK

2014-15-16-17-18-19-20

Acc. DAYS WHITEFACE

Lot 17 - DAYS P116 (PP)

P116

BIRTH DATE - 24/05/2018

POLL STATUS - HOMOZYGOUS

PIGMENT - 100/100

DAYS CALIBRE G74 (PP)
DAYS ROBIN HOOD J183 (PP)
ALLENDALE FANCY U5 (AI) (P)

TH 71U 719T MR HEREFORD 11X (IMP USA) (P)
TH 70R 11X MR HEREFORD 34Z (IMP USA) (P)
TH 172J 57G QUEEN MAKER 70R (P)

SIRE - DAYS HOMESTEAD M033 (AI) (P)

DAM - DAYS FANCY M040 (AI) (P)

WIRRUNA GEELONG G171 (AI) (PP)
DAYS MISS REGAL K35 (AI) (P)
DAYS MISS REGAL G54 (P)

DAYS WASHINGTON H35 (AI) (ET) (P)
DAYS FANCY K178 (P)
DAYS FANCY F59 (P)

DECEMBER 2019 GROUP BREEDPLAN EBVS							
CE DIR	CE DTRS	GL	BWT	200W	400W	600W	MCW
+5.3	+5.1	-1.5	+3.9	+36	+56	+79	+69
38%	29%	57%	71%	65%	66%	69%	61%
MILK	SS	CWT	EMA	RIB	RUMP	RBV%	IMF%
+19	+5.0	+54	+4.6	+0.7	+1.3	+0.6	+0.6
43%	76%	55%	47%	51%	56%	49%	48%

\$ INDEX VALUE	
SSR	+\$150
NSR	+\$140
SBM	+\$156
NBT	+\$114

Well balanced long bodied heifers first calf with a good hindquarter. Homestead M033 sold to The Snuggery for \$18,000.

PURCHASER:..... \$.....

Lot 18 - DAYS P080 (AI) (S)

P080

BIRTH DATE - 12/05/2018

POLL STATUS - SCURRED

PIGMENT - 65/100

CL 1 DOMINO 9126J 1ET (H)
KCF BENNETT 9126J R294 (P)
KCF MISS 3008 N344 (P)

ALLENDALE WATERHOUSE D1 (PP)
DAYS DRIFTER H9 (TW) (P)
PINE HILL MARITANA B513 (P)

SIRE - GERBER ANODYNE 001A (IMP) (S)

DAM - DAYS FANCY K170 (P)

GERBER SQUIRE 627S (P)
GERBER 627S HOLLY 096Y (P)
GERBER 116K HOLLY T115 (P)

ALLENDALE VENGEANCE A49 (AI) (P)
DAYS FANCY E13 (AI) (ET) (P)
ALLENDALE FANCY S19 (AI) (P)

DECEMBER 2019 GROUP BREEDPLAN EBVS							
CE DIR	CE DTRS	GL	BWT	200W	400W	600W	MCW
+3.0	+4.6	-2.7	+4.7	+40	+68	+102	+99
37%	26%	72%	72%	66%	66%	70%	61%
MILK	SS	CWT	EMA	RIB	RUMP	RBV%	IMF%
+19	+2.1	+67	+3.2	-0.1	-0.8	+1.0	+0.1
36%	74%	55%	45%	50%	55%	48%	47%

\$ INDEX VALUE	
SSR	+\$153
NSR	+\$130
SBM	+\$164
NBT	+\$121

A very long Anodyne son with a top 5% 600 day wt.

PURCHASER:..... \$.....

EBV in **Top 10%** EBV in **Top 20%**

Acc. DAYS WHITEFACE

Lot 19 - DAYS JACKHAMMER P035 (AI) (S)

P035

BIRTH DATE - 02/05/2018

POLL STATUS - SCURRED

PIGMENT - 100/90

CL 1 DOMINO 9126J 1ET (H)
KCF BENNETT 9126J R294 (P)
KCF MISS 3008 N344 (P)

MATARIKI HOLY - SMOKE (IMP NZL) (P)
WIRRUNA JUSTIN J13 (AI) (PP)
WIRRUNA DOREEN G393 (P)

SIRE - GERBER ANODYNE 001A (IMP) (S)

DAM - DAYS MARSHALL LASS M045 (AI) (P)

GERBER SQUIRE 627S (P)
GERBER 627S HOLLY 096Y (P)
GERBER 116K HOLLY T115 (P)

ALLENDALE WATERHOUSE D1 (PP)
DAYS MARSHALL LASS K56 (P)
ALLENDALE MARSHALL LASS C91 (AI) (P)

DECEMBER 2019 GROUP BREEDPLAN EBVS							
CE DIR	CE DTRS	GL	BWT	200W	400W	600W	MCW
+1.4	+4.3	-2.0	+4.9	+43	+70	+95	+69
38%	27%	74%	72%	65%	66%	70%	61%
MILK	SS	CWT	EMA	RIB	RUMP	RBV%	IMF%
+18	+3.6	+67	+5.4	+1.2	+1.2	+0.8	+1.1
36%	75%	55%	46%	51%	55%	48%	48%

\$ INDEX VALUE	
SSR	+\$186
NSR	+\$170
SBM	+\$178
NBT	+\$121

Moderate framed bull with a very good carcass with excellent EBV's. Top 5% on both self-replacing indexes.

PURCHASER:..... \$.....

Lot 20 - DAYS IMPERIOUS P050 (AI) (TW) (P)

P050

BIRTH DATE - 06/05/2018

POLL STATUS - HETEROZYGOUS

PIGMENT - 100/100

SOUTH BUKALONG WALLACE 2 (P)
DAYS PATRICK H37 (AI) (ET) (S)
ALLENDALE FANCY A7 (AI) (ET) (P)

REMITALL ACME 10A (P)
REMITALL EMBRACER 8E (IMP CAN) (P)
PLAIN LAKE BELLE 20X 117P 5B (P)

SIRE - DAYS FERRARI K128 (PP)

DAM - DAYS DAWN L23 (AI) (P)

ALLENDALE WATERHOUSE D1 (PP)
DAYS GLADIOLA H184 (P)
ALLENDALE GLADIOLA X178 (P)

SOUTH BUKALONG SHANNON 40 (PP)
ALLENDALE DAWN D70 (AI) (P)
ALLENDALE DAWN A263 (P)

DECEMBER 2019 GROUP BREEDPLAN EBVS							
CE DIR	CE DTRS	GL	BWT	200W	400W	600W	MCW
+7.7	+6.7	-2.5	+4.2	+37	+60	+82	+53
43%	34%	60%	71%	64%	64%	66%	60%
MILK	SS	CWT	EMA	RIB	RUMP	RBV%	IMF%
+16	+3.7	+56	+4.8	+0.0	-0.1	+1.1	+1.1
48%	70%	53%	45%	49%	52%	47%	49%

\$ INDEX VALUE	
SSR	+\$177
NSR	+\$163
SBM	+\$188
NBT	+\$131

Very good bodied bull with a good skin. Dawn L23's first calf was used in the herd and sold for \$16,000 to Harlock Pastoral at last years sale.

PURCHASER:..... \$.....

EBV in **Top 10%**

EBV in **Top 20%**

Acc. DAYS WHITEFACE

Lot 21 - ALLENDALE ZANZIBAR P105 (AI) (PP)

P105

BIRTH DATE - 17/05/2018

POLL STATUS - HOMOZYGOUS

PIGMENT - 100/100

ALLENDALE ANZAC E114 (PP)
 ALLENDALE CHINCHILLA J23 (AI) (PP)
 ALLENDALE FANCY B115 (P)

ALLENDALE ROSEMOUNT 2 (AI) (P)
 ALLENDALE PRECISION Z101 (P)
 ALLENDALE ELIZABETH S8 (AI) (P)

SIRE - ALLENDALE GAMBLER L143 (P)
 ALLENDALE WALHALLOW D149 (AI) (P)
 ALLENDALE LAST DAY F57 (PP)
 ALLENDALE LAST DAY D45 (AI) (P)

DAM - ALLENDALE FLORRIE B130 (P)
 MARKOWEN GENERAL (P)
 ALLENDALE FLORRIE Y4 (P)
 ALLENDALE FLORRIE T146 (P)

DECEMBER 2019 GROUP BREEDPLAN EBVS							
CE DIR	CE DTRS	GL	BWT	200W	400W	600W	MCW
-0.3	-1.1	+0.8	+6.2	+34	+52	+74	+66
43%	31%	74%	74%	69%	69%	71%	63%
MILK	SS	CWT	EMA	RIB	RUMP	RBV%	IMF%
+16	+2.4	+45	+5.8	+1.4	+2.3	+0.5	+1.4
50%	76%	58%	48%	53%	58%	51%	52%

\$ INDEX VALUE	
SSR	+\$117
NSR	+\$107
SBM	+\$117
NBT	+\$91

A top quality, strong topped bull. A son of B130, topped our 2017 sale selling for \$24,000 to Nick and Paul Laucke. Very good carcass figures on this bull.

PURCHASER: \$.....



EBV in Top 10%

EBV in Top 20%

Acc. ALLENDALE

Lot 22 - ALLENDALE JACKAL P176 (PP)

P176

BIRTH DATE - 19/06/2018

POLL STATUS - HOMOZYGOUS

PIGMENT - 70/100

ALLENDALE WATERHOUSE D1 (PP)
 DAYS ROBIN HOOD H38 (AI) (ET) (PP)
 ALLENDALE FANCY U5 (AI) (P)

SHF WONDER M326 W18 ET (P)
 REMITALL-WEST GAME DAY ET 74Y (IMP CAN) (P)
 REMITALL MARVEL 78T (IMP CAN) (P)

SIRE - ALLENDALE CHISEL L3 (ET) (PP)
 SOUTH BUKALONG SHANNON 40 (PP)
 ALLENDALE CORA D47 (AI) (P)
 ALLENDALE CORA B7 (AI) (P)

DAM - ALLENDALE KERRY MAID L113 (AI) (P)
 ALLENDALE SUPERSTAR B26 (AI) (ET) (P)
 ALLENDALE KERRY MAID F7 (P)
 WIRANYA KERRY MAID W28 (S)

DECEMBER 2019 GROUP BREEDPLAN EBVS							
CE DIR	CE DTRS	GL	BWT	200W	400W	600W	MCW
+4.4	+5.1	-2.2	+5.9	+50	+84	+125	+105
43%	34%	56%	65%	66%	66%	69%	61%
MILK	SS	CWT	EMA	RIB	RUMP	RBY%	IMF%
+19	+3.6	+84	+5.7	+0.9	+1.7	+1.5	+1.1
48%	75%	58%	49%	53%	57%	51%	52%

\$ INDEX VALUE	
SSR	+\$233
NSR	+\$217
SBM	+\$235
NBT	+\$167

Heavy bodied, good skinned bull with real power. Dam is a top young cow and is also the dam of lot 10. P176 is number 4 bull in the breed for 2018 drop on his Southern Self Replacing Index.

PURCHASER:..... \$.....



EBV in **Top 10%**

EBV in **Top 20%**

Acc. ALLENDALE

Lot 23 - ALLENDALE IMRAN P106 (AI) (PP)

P106

BIRTH DATE - 17/05/2018

POLL STATUS - HOMOZYGOUS

PIGMENT - 100/95

ALLENDALE ANZAC E114 (PP)
 ALLENDALE CHINCHILLA J23 (AI) (PP)
 ALLENDALE FANCY B115 (P)

ALLENDALE BUSHMAN F119 (P)
 ALLENDALE EUREKA J9 (AI) (PP)
 ALLENDALE DAWN C29 (AI) (ET) (P)

SIRE - ALLENDALE GAMBLER L143 (P)
 ALLENDALE WALHALLOW D149 (AI) (P)
 ALLENDALE LAST DAY F57 (PP)
 ALLENDALE LAST DAY D45 (AI) (P)

DAM - ALLENDALE DAWN L56 (P)
 ALLENDALE COLLINGWOOD G20 (AI) (P)
 ALLENDALE DAWN J30 (P)
 ALLENDALE DAWN G141 (P)

DECEMBER 2019 GROUP BREEDPLAN EBVS							
CE DIR	CE DTRS	GL	BWT	200W	400W	600W	MCW
-3.5	-0.1	+3.9	+7.5	+41	+62	+92	+70
40%	27%	73%	73%	68%	68%	71%	63%
MILK	SS	CWT	EMA	RIB	RUMP	RBY%	IMF%
+20	+2.5	+62	+7.3	+2.0	+3.0	+0.9	+1.4
43%	77%	57%	48%	53%	58%	50%	50%

\$ INDEX VALUE	
SSR	+\$149
NSR	+\$135
SBM	+\$140
NBT	+\$98

Smooth, well balanced Gambler son with excellent carcass figures

PURCHASER: \$.....



EJS

LOT 23

EBV in Top 10%

EBV in Top 20%

Acc. ALLENDALE

Lot 24 - ALLENDALE CADET P080 (AI) (TW) (P)

P080

BIRTH DATE - 11/05/2018

POLL STATUS - HETEROZYGOUS

PIGMENT - 100/100

SHF WONDER M326 W18 ET (P)
 REMITALL-WEST GAME DAY ET 74Y (IMP CAN) (P)
 REMITALL MARVEL 78T (IMP CAN) (P)

ALLENDALE ROBIN HOOD Y169 (P)
 ALLENDALE WATERLOO B50 (AI) (P)
 ALLENDALE FANCY Z35 (AI) (P)

SIRE - ALLENDALE CHISEL L8 (ET) (S)

DAM - ALLENDALE DAISY D48 (AI) (P)

SOUTH BUKALONG SHANNON 40 (PP)
 ALLENDALE CORA D47 (AI) (P)
 ALLENDALE CORA B7 (AI) (P)

MERAWAH JUDGE W51 (P)
 ALLENDALE DAISY Z80 (TW) (P)
 ALLENDALE DAISY V107 (AI) (P)

DECEMBER 2019 GROUP BREEDPLAN EBVS							
CE DIR	CE DTRS	GL	BWT	200W	400W	600W	MCW
+2.8	+3.0	+0.1	+4.3	+41	+69	+92	+90
44%	36%	60%	72%	65%	62%	64%	59%
MILK	SS	CWT	EMA	RIB	RUMP	RBV%	IMF%
+16	+3.9	+59	+2.6	-1.1	-1.7	+1.7	-0.4
52%	60%	54%	45%	51%	54%	48%	51%

\$ INDEX VALUE	
SSR	+\$146
NSR	+\$130
SBM	+\$151
NBT	+\$113

Correct, deep bodied bull. A typical L8 son carrying very good growth figures

PURCHASER:..... \$.....

Lot 25 - ALLENDALE JON SNOW P066 (AI) (PP)

P066

BIRTH DATE - 07/05/2018

POLL STATUS - HOMOZYGOUS

PIGMENT - 85/100

ALLENDALE ANZAC E114 (PP)
 ALLENDALE CHINCHILLA J23 (AI) (PP)
 ALLENDALE FANCY B115 (P)

WIRRUNA ABERCORN (AI) (P)
 ALLENDALE YEMEN E39 (P)
 ALLENDALE FANCY A158 (AI) (ET) (S)

SIRE - ALLENDALE GAMBLER L143 (P)

DAM - ALLENDALE KATE J24 (P)

ALLENDALE WALHALLOW D149 (AI) (P)
 ALLENDALE LAST DAY F57 (P)
 ALLENDALE LAST DAY D45 (AI) (P)

ALLENDALE ZEPPELIN (AI) (S)
 ABBERLEY KATE 9 (P)
 ABBERLEY KATE B3 (TW) (P)

DECEMBER 2019 GROUP BREEDPLAN EBVS							
CE DIR	CE DTRS	GL	BWT	200W	400W	600W	MCW
+4.0	+1.6	-0.7	+4.2	+33	+55	+77	+62
43%	32%	74%	73%	67%	64%	65%	59%
MILK	SS	CWT	EMA	RIB	RUMP	RBV%	IMF%
+17	+2.4	+56	+6.1	+1.3	+2.2	+1.2	+0.8
48%	62%	54%	45%	51%	55%	48%	52%

\$ INDEX VALUE	
SSR	+\$150
NSR	+\$144
SBM	+\$154
NBT	+\$114

Good hindquarter, medium framed Gambler son.

PURCHASER:..... \$.....

EBV in **Top 10%**

EBV in **Top 20%**

Acc. ALLENDALE

Lot 26 - ALLENDALE JARRAH P091 (AI) (S)

P091

BIRTH DATE - 14/05/2018

POLL STATUS - SCURRED

PIGMENT - 90/100

SHF WONDER M326 W18 ET (P)
 REMITALL-WEST GAME DAY ET 74Y (IMP CAN) (P)
 REMITALL MARVEL 78T (IMP CAN) (P)
SIRE - ALLENDALE CHISEL L8 (ET) (S)
 SOUTH BUKALONG SHANNON 40 (PP)
 ALLENDALE CORA D47 (AI) (P)
 ALLENDALE CORA B7 (AI) (P)

ALLENDALE ZEPPELIN E15 (AI) (P)
 ALLENDALE CAULFIELD G146 (P)
 ALLENDALE MARLINE C233 (P)
DAM - ALLENDALE FANCY J10 (P)
 ALLENDALE YEMEN E39 (P)
 ALLENDALE FANCY G21 (AI) (P)
 ALLENDALE FANCY E9 (P)

DECEMBER 2019 GROUP BREEDPLAN EBVS							
CE DIR	CE DTRS	GL	BWT	200W	400W	600W	MCW
+3.0	+3.8	-1.7	+3.1	+39	+68	+92	+69
39%	31%	71%	72%	67%	67%	71%	63%
MILK	SS	CWT	EMA	RIB	RUMP	RBV%	IMF%
+22	+4.5	+68	+5.0	+0.3	+0.2	+1.1	+0.8
47%	76%	57%	47%	53%	57%	50%	50%

\$ INDEX VALUE	
SSR	+\$173
NSR	+\$157
SBM	+\$174
NBT	+\$124

A deep, long bull with good figures. P091's dam weans one of the best calves every year.

PURCHASER:..... \$.....

Lot 27 - ALLENDALE JARDINE P058 (S)

P058

BIRTH DATE - 03/05/2018

POLL STATUS - SCURRED

PIGMENT - 100/100

ALLENDALE YACKA (AI) (P)
 ALLENDALE ANZAC E114 (PP)
 ALLENDALE DAWN B22 (AI) (ET) (P)
SIRE - ALLENDALE GALILEO M112 (AI) (PP)
 MORGANVALE FEVOLA (AI) (P)
 ALLENDALE FANCY H32 (PP)
 ALLENDALE FANCY F82 (AI) (P)

WIRRUNA GEELONG G171 (AI) (PP)
 ALLENDALE JI FREEWAY K28 (AI) (PP)
 ABBERLEY MARLINE H10 (AI) (P)
DAM - ALLENDALE KATE M017 (AI) (P)
 ALLENDALE COLLINGWOOD G20 (AI) (P)
 ALLENDALE KATE K46 (AI) (S)
 ABBERLEY KATE 8 (P)

DECEMBER 2019 GROUP BREEDPLAN EBVS							
CE DIR	CE DTRS	GL	BWT	200W	400W	600W	MCW
+7.0	+5.1	-3.2	+2.8	+37	+61	+84	+72
37%	31%	57%	70%	63%	64%	68%	60%
MILK	SS	CWT	EMA	RIB	RUMP	RBV%	IMF%
+20	+2.2	+64	+4.8	+1.5	+2.0	+0.0	+1.4
44%	75%	54%	45%	50%	54%	48%	47%

\$ INDEX VALUE	
SSR	+\$155
NSR	+\$144
SBM	+\$173
NBT	+\$132

A deep, good skinned bull. Handy figures on this heifers first calf. Galileo sold to Mahwallock East at Wodonga in 2018.

PURCHASER:..... \$.....

EBV in **Top 10%** EBV in **Top 20%**

Acc. ALLENDALE

Lot 28 - ALLENDALE JACKAROO P165 (PP)

P165

BIRTH DATE - 13/06/2018

POLL STATUS - HOMOZYGOUS

PIGMENT - 100/100

ALLENDALE WATERHOUSE D1 (PP)
 DAYS ROBIN HOOD H38 (AI) (ET) (PP)
 ALLENDALE FANCY U5 (AI) (P)

ALLENDALE NATIONAL W168 (PP)
 ALLENDALE ZEPPELIN E15 (AI) (P)
 ALLENDALE FANCY Z247 (P)

SIRE - ALLENDALE CHISEL L3 (ET) (PP)

DAM - ALLENDALE FANCY G91 (P)

SOUTH BUKALONG SHANNON 40 (PP)
 ALLENDALE CORA D47 (AI) (P)
 ALLENDALE CORA B7 (AI) (P)

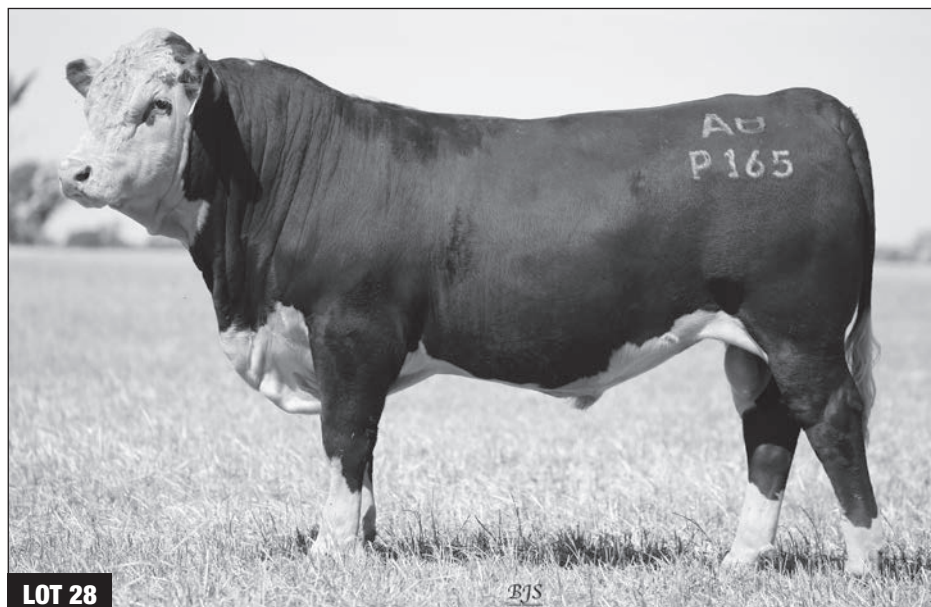
RUSSELYNN SUPERIOR (P)
 ALLENDALE FANCY V206 (P)
 ALLENDALE FANCY R32 (P)

DECEMBER 2019 GROUP BREEDPLAN EBVS							
CE DIR	CE DTRS	GL	BWT	200W	400W	600W	MCW
+4.0	+2.1	-2.1	+4.2	+39	+67	+84	+69
43%	35%	54%	74%	68%	68%	71%	64%
MILK	SS	CWT	EMA	RIB	RUMP	RBV%	IMF%
+13	+2.7	+58	+5.5	+0.5	+1.4	+0.9	+0.9
50%	76%	59%	50%	55%	59%	52%	53%

\$ INDEX VALUE	
SSR	+\$154
NSR	+\$149
SBM	+\$162
NBT	+\$122

A quality, well balanced bull with good figures makes P165 a very attractive package.

PURCHASER: \$.....



EBV in **Top 10%**

EBV in **Top 20%**

Acc. ALLENDALE

Lot 29 - ALLENDALE INQUEST P088 (TW) (S)

P088

BIRTH DATE - 13/05/2018

POLL STATUS - SCURRED

PIGMENT - 100/100

ALLENDALE WATERHOUSE D1 (PP)
 DAYS ROBIN HOOD H38 (AI) (ET) (PP)
 ALLENDALE FANCY U5 (AI) (P)

SHF WONDER M326 W18 ET (P)
 REMITALL-WEST GAME DAY ET 74Y (IMP CAN) (P)
 REMITALL MARVEL 78T (IMP CAN) (P)

SIRE - ALLENDALE CHISEL L3 (ET) (PP)
 SOUTH BUKALONG SHANNON 40 (PP)
 ALLENDALE CORA D47 (AI) (P)
 ALLENDALE CORA B7 (AI) (P)

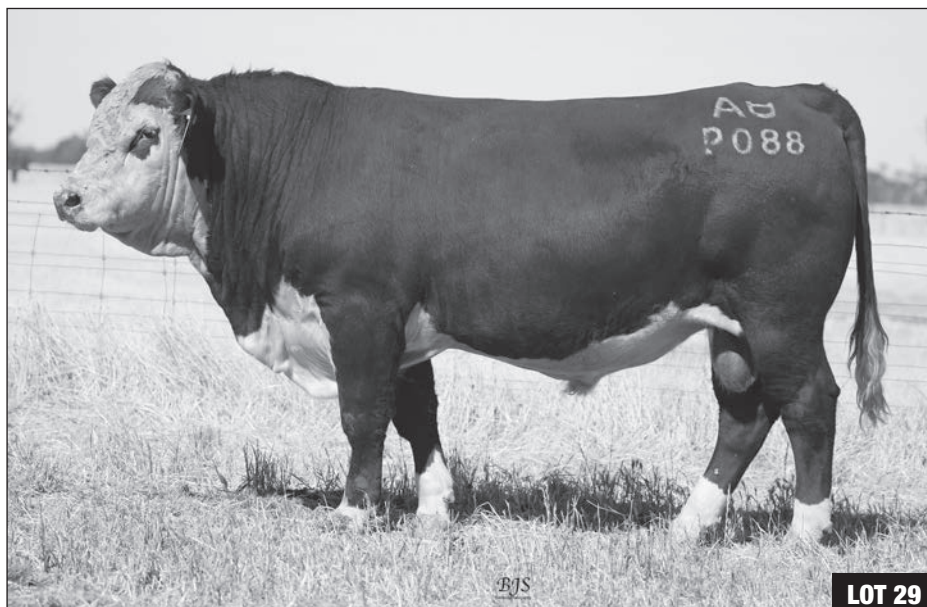
DAM - ALLENDALE FANCY K47 (AI) (P)
 ALLENDALE WASHINGTON D57 (AI) (P)
 ALLENDALE FANCY G84 (ET) (P)
 ALLENDALE FANCY Y19 (AI) (P)

DECEMBER 2019 GROUP BREEDPLAN EBVS							
CE DIR	CE DTRS	GL	BWT	200W	400W	600W	MCW
+4.5	+5.8	-2.3	+4.2	+39	+65	+88	+78
43%	34%	57%	72%	65%	63%	64%	58%
MILK	SS	CWT	EMA	RIB	RUMP	RBY%	IMF%
+21	+2.3	+61	+4.6	+1.4	+2.6	+0.2	+0.7
47%	61%	55%	46%	52%	55%	48%	52%

\$ INDEX VALUE	
SSR	+\$163
NSR	+\$152
SBM	+\$169
NBT	+\$122

Deep, thick and early maturing best describe P088. From a good RWGD daughter, P088 has very good Breedplan figures and an excellent full brother for next year.

PURCHASER: \$.....



BJS

LOT 29

EBV in Top 10%

EBV in Top 20%

Acc. DAYS WHITEFACE

Lot 30 - DAYS JAMIESON P021 (AI) (PP)

P021

BIRTH DATE - 26/04/2018

POLL STATUS - HOMOZYGOUS

PIGMENT - 100/75

CL 1 DOMINO 9126J 1ET (H)
 KCF BENNETT 9126J R294 (P)
 KCF MISS 3008 N344 (P)

ALLEDALE ANZAC E114 (PP)
 INJEMIRA ANZAC AI J188 (AI) (PP)
 INJEMIRA PATTIE D119 (P)

SIRE - GERBER ANODYNE 001A (IMP) (S)

DAM - DAYS FANCY M113 (P)

GERBER SQUIRE 627S (P)
 GERBER 627S HOLLY 096Y (P)
 GERBER 116K HOLLY T115 (P)

WIRRUNA ABERCORN (AI) (P)
 DAYS FANCY F7 (AI) (ET) (P)
 ALLEDALE FANCY U64 (AI) (P)

DECEMBER 2019 GROUP BREEDPLAN EBVS							
CE DIR	CE DTRS	GL	BWT	200W	400W	600W	MCW
-0.1	+1.1	-4.7	+5.0	+42	+71	+103	+96
37%	26%	72%	72%	65%	66%	70%	60%
MILK	SS	CWT	EMA	RIB	RUMP	RBV%	IMF%
+16	+1.4	+75	+4.6	+0.5	+0.1	+0.8	+0.6
34%	75%	55%	45%	50%	55%	48%	47%

\$ INDEX VALUE	
SSR	+\$155
NSR	+\$135
SBM	+\$156
NBT	+\$115

Big, strong, deep bodied, good skinned heifers first calf with very good growth EBV's.

PURCHASER:..... \$.....



LOT 30

EBV in **Top 10%**

EBV in **Top 20%**

Acc. DAYS WHITEFACE

Lot 31 - DAYS DEMONSTRATOR P009 (AI) (ET) (P)

P009

BIRTH DATE - 16/04/2018

POLL STATUS - HETEROZYGOUS

PIGMENT - 100/100

QUAMBY PLAINS STOCKMASTER Y118 (P)
 WIRRUNA FLETCHER F214 (P)
 WIRRUNA LAST DAY B16 (AI) (H#)
SIRE - WIRRUNA KATNOOK K74 (AI) (P)
 WIRRUNA DAFFY D1 (P)
 WIRRUNA VICTORIA G7 (AI) (P)
 WIRRUNA VICTORIA E112 (AI) (ET) (P)

DEBARRY EDEN (PP)
 ALLENDALE TIPPERARY D13 (AI) (ET) (P)
 ALLENDALE FANCY U64 (AI) (P)
DAM - DAYS CORA F76 (P)
 OKAWA COMMODORE 020076 (IMP NZL) (P)
 ALLENDALE CORA D26 (AI) (P)
 ALLENDALE A1 (P)

DECEMBER 2019 GROUP BREEDPLAN EBVS							
CE DIR	CE DTRS	GL	BWT	200W	400W	600W	MCW
+4.4	+1.8	-2.6	+6.3	+45	+64	+96	+71
49%	38%	65%	74%	70%	70%	72%	65%
MILK	SS	CWT	EMA	RIB	RUMP	RBV%	IMF%
+19	+2.6	+59	+4.7	+0.0	-0.5	+1.5	+1.4
57%	76%	63%	54%	60%	63%	55%	61%

\$ INDEX VALUE	
SSR	+\$179
NSR	+\$159
SBM	+\$184
NBT	+\$134

Long, deep bodied Katnook son who is a trait leader for EMA and IMF. 3 sons of Cora F76 have averaged \$11,500 including a Dubbo performance class winner. ET brother to Lot 68.

PURCHASER:..... \$.....

Lot 32 - DAYS HEMISPHERE P004 (AI) (ET) (PP)

P004

BIRTH DATE - 19/04/2018

POLL STATUS - HOMOZYGOUS

PIGMENT - 100/100

ALLENDALE YACKA (AI) (P)
 ALLENDALE ANZAC E114 (PP)
 ALLENDALE DAWN B22 (AI) (ET) (P)
SIRE - INJEMIRA ANZAC H006 (PP)
 PINE HILL ERIK Y601 (AI) (S)
 INJEMIRA MARINDA B028 (AI) (P)
 INJEMIRA MARINDA Y065 (H)

ALLENDALE VAGABOND A74 (AI) (P)
 ALLENDALE WATERHOUSE D1 (PP)
 ALLENDALE MARLINE X185 (P)
DAM - DAYS CORA J92 (P)
 ALLENDALE TIPPERARY D13 (AI) (ET) (P)
 DAYS CORA F76 (P)
 ALLENDALE CORA D26 (AI) (P)

DECEMBER 2019 GROUP BREEDPLAN EBVS							
CE DIR	CE DTRS	GL	BWT	200W	400W	600W	MCW
+0.9	+3.7	-1.6	+3.9	+39	+62	+84	+79
49%	41%	64%	74%	70%	70%	72%	65%
MILK	SS	CWT	EMA	RIB	RUMP	RBV%	IMF%
+15	+2.8	+58	+4.4	+0.6	+0.7	+1.4	+0.3
59%	76%	61%	53%	58%	61%	55%	60%

\$ INDEX VALUE	
SSR	+\$144
NSR	+\$137
SBM	+\$144
NBT	+\$105

Long bodied good skinned bull. ET brother to Lot 33 & Lot 67 . First son of Cora J92 was used in the stud and sold for \$22,000 to Sacul Investments.

PURCHASER:..... \$.....

EBV in **Top 10%** EBV in **Top 20%**

Acc. DAYS WHITEFACE

Lot 33 - DAYS HEMISPHERE P012 (AI) (ET) (PP)

P012

BIRTH DATE - 20/04/2018

POLL STATUS - HOMOZYGOUS

PIGMENT - 100/100

ALLEDALE YACKA (AI) (P)
 ALLEDALE ANZAC E114 (PP)
 ALLEDALE DAWN B22 (AI) (ET) (P)

ALLEDALE VAGABOND A74 (AI) (P)
 ALLEDALE WATERHOUSE D1 (P)
 ALLEDALE MARLINE X185 (P)

SIRE - INJEMIRA ANZAC H006 (PP)

PINE HILL ERIK Y601 (AI) (S)
 INJEMIRA MARINDA B028 (AI) (P)
 INJEMIRA MARINDA Y065 (H)

DAM - DAYS CORA J92 (P)

ALLEDALE TIPPERARY D13 (AI) (ET) (P)
 DAYS CORA F76 (P)
 ALLEDALE CORA D26 (AI) (P)

DECEMBER 2019 GROUP BREEDPLAN EBVS							
CE DIR	CE DTRS	GL	BWT	200W	400W	600W	MCW
+2.0	+3.9	-0.6	+5.1	+41	+68	+94	+79
49%	41%	63%	74%	70%	70%	72%	65%
MILK	SS	CWT	EMA	RIB	RUMP	RBV%	IMF%
+22	+4.0	+63	+5.0	+0.7	+0.6	+1.6	+0.4
59%	76%	61%	53%	57%	61%	55%	59%

\$ INDEX VALUE	
SSR	+\$165
NSR	+\$151
SBM	+\$167
NBT	+\$120

Long bodied, correct structured bull. ET brother to Lot 32 & Lot 67.

PURCHASER:..... \$.....

Lot 34 - DAYS JAMBOREE P108 (AI) (S)

P108

BIRTH DATE - 21/05/2018

POLL STATUS - SCURRED

PIGMENT - 90/100

CL 1 DOMINO 9126J 1ET (H)
 KCF BENNETT 9126J R294 (P)
 KCF MISS 3008 N344 (P)

ALLEDALE SUPERSTAR B28 (AI) (ET) (S)
 DAYS WASHINGTON H35 (AI) (ET) (P)
 ALLEDALE FANCY Z59 (P)

SIRE - GERBER ANODYNE 001A (IMP) (S)

GERBER SQUIRE 627S (P)
 GERBER 627S HOLLY 096Y (P)
 GERBER 116K HOLLY T115 (P)

DAM - DAYS DAWN K91 (P)

ALLEDALE VAGABOND A74 (AI) (P)
 DAYS DAWN F32 (AI) (P)
 ALLEDALE DAWN C62 (AI) (P)

DECEMBER 2019 GROUP BREEDPLAN EBVS							
CE DIR	CE DTRS	GL	BWT	200W	400W	600W	MCW
-0.9	+4.1	-2.6	+5.9	+42	+65	+98	+98
37%	26%	73%	72%	66%	67%	70%	62%
MILK	SS	CWT	EMA	RIB	RUMP	RBV%	IMF%
+18	+2.4	+63	+3.0	+0.0	-0.6	+0.7	+0.5
37%	74%	55%	45%	51%	56%	49%	48%

\$ INDEX VALUE	
SSR	+\$134
NSR	+\$111
SBM	+\$137
NBT	+\$101

Big, deep bodied bull. Dawn C62 dam of Calibre.

PURCHASER:..... \$.....

EBV in **Top 10%**

EBV in **Top 20%**

Acc. DAYS WHITEFACE

Lot 35 - DAYS INNOVATOR P102 (AI) (PP)

P102

BIRTH DATE - 19/05/2018

POLL STATUS - HOMOZYGOUS

PIGMENT - 100/100

ALLENDALE VAGABOND A74 (AI) (P)
 ALLENDALE WATERHOUSE D1 (PP)
 ALLENDALE MARLINE X185 (P)

HEATHERDALE JUNCTION W203 (P)
 TAS BALTIMORE A14 (AI) (P)
 WIRANYA BISETTA W24 (P)

SIRE - DAYS EXECUTIVE K168 (PP)

DAM - DAYS FANCY G148 (P)

ALLENDALE TIPPERARY D13 (AI) (ET) (P)
 DAYS SILVIA G13 (AI) (P)
 DAYS SILVIA E30 (AI) (P)

ALLENDALE NATIONAL W168 (PP)
 ALLENDALE FANCY A6 (AI) (ET) (P)
 ALLENDALE FANCY U5 (AI) (P)

DECEMBER 2019 GROUP BREEDPLAN EBVS							
CE DIR	CE DTRS	GL	BWT	200W	400W	600W	MCW
+4.2	+4.7	-0.1	+4.5	+38	+63	+86	+73
45%	37%	75%	75%	70%	70%	73%	65%
MILK	SS	CWT	EMA	RIB	RUMP	RBV%	IMF%
+20	+3.3	+57	+6.3	-0.3	+0.0	+2.1	+0.3
51%	78%	60%	53%	56%	61%	54%	56%

\$ INDEX VALUE	
SSR	+\$158
NSR	+\$146
SBM	+\$166
NBT	+\$122

Long smooth skinned bull whose full brother sold for \$7,000 last year to South Killanoola. Fancy U5 is dam of the Robin Hood bulls.

PURCHASER:..... \$.....

Lot 36 - DAYS JAKARTA P076 (AI) (PP)

P076

BIRTH DATE - 11/05/2018

POLL STATUS - HOMOZYGOUS

PIGMENT - 100/100

ALLENDALE VAGABOND A74 (AI) (P)
 ALLENDALE WATERHOUSE D1 (PP)
 ALLENDALE MARLINE X185 (P)

MELVILLE EXCEL E443 (P)
 DAYS ELABORATE J59 (AI) (P)
 DAYS CORA E38 (AI) (P)

SIRE - DAYS EXECUTIVE K168 (PP)

DAM - DAYS DALLAS L73 (P)

ALLENDALE TIPPERARY D13 (AI) (ET) (P)
 DAYS SILVIA G13 (AI) (P)
 DAYS SILVIA E30 (AI) (P)

ALLENDALE WATERHOUSE D1 (PP)
 DAYS DALLAS J78 (P)
 DAYS DALLAS (ET) (P)

DECEMBER 2019 GROUP BREEDPLAN EBVS							
CE DIR	CE DTRS	GL	BWT	200W	400W	600W	MCW
+1.6	+3.4	-4.9	+6.2	+42	+72	+99	+90
44%	35%	75%	75%	70%	70%	73%	65%
MILK	SS	CWT	EMA	RIB	RUMP	RBV%	IMF%
+20	+3.5	+59	+4.7	-0.4	-0.6	+1.6	+0.6
48%	78%	61%	53%	57%	61%	55%	57%

\$ INDEX VALUE	
SSR	+\$162
NSR	+\$143
SBM	+\$165
NBT	+\$122

Big, long bull with a strong top and top 5% for 400 day wt.

PURCHASER:..... \$.....

EBV in **Top 10%** EBV in **Top 20%**

zoetis

MISSING LEPTOSPIROSIS VACCINATIONS COULD LAY YOU OFF WORK FOR MONTHS

In addition to reducing the reproductive performance of beef and dairy herds, leptospirosis can spread from cattle to humans and develop into an ongoing chronic-fatigue-like illness

Don't risk your family, your employees, yourself or your herd. Vaccinate your cattle with Ultravac® 7in1*, the only 7in1 that prevents shedding of leptospires, and can be used in calves from 4 weeks of age.

Protection against leptospirosis and clostridial diseases



FOR MORE INFORMATION, SPEAK TO YOUR LOCAL ZOETIS REPRESENTATIVE OR CALL 1800 963 847

*See product leaflet for details of administration and product claims.

Zoetis Australia Pty Ltd, ABN 94 156 476 425, Level 6, 5 Baker Boulevard, Rhodes NSW 2138. © 2016 Zoetis Inc. All rights reserved. Z0450 08/16.

Acc. DAYS WHITEFACE

Lot 37 - DAYS FORT WORTH P042 (AI) (S)

P042

BIRTH DATE - 04/05/2018

POLL STATUS - SCURRED

PIGMENT - 100/100

CL 1 DOMINO 9126J 1ET (H)
KCF BENNETT 9126J R294 (P)
KCF MISS 3008 N344 (P)

ALLENDALE NATIONAL W168 (PP)
PINE HILL ENERGISE E604 (AI) (P)
PINE HILL SIRIKIT B705 (P)

SIRE - GERBER ANODYNE 001A (IMP) (S)

DAM - DAYS DAISY H44 (P)

GERBER SQUIRE 627S (P)
GERBER 627S HOLLY 096Y (P)
GERBER 116K HOLLY T115 (P)

ALLENDALE WASHINGTON D57 (AI) (P)
DAYS DAISY F57 (AI) (P)
ALLENDALE DAISY C243 (P)

DECEMBER 2019 GROUP BREEDPLAN EBVS							
CE DIR	CE DTRS	GL	BWT	200W	400W	600W	MCW
+4.5	+2.6	-3.8	+3.5	+32	+50	+69	+62
39%	28%	73%	72%	66%	67%	70%	62%
MILK	SS	CWT	EMA	RIB	RUMP	RBV%	IMF%
+17	+0.8	+52	+4.4	+0.7	+0.0	+1.0	+0.8
41%	75%	56%	46%	51%	56%	49%	48%

\$ INDEX VALUE	
SSR	+\$120
NSR	+\$107
SBM	+\$131
NBT	+\$102

Good structured, short gestation length bull suitable for heifers. First son of H44 sold for \$10,000 to Woomargama Station.

PURCHASER:..... \$.....

Lot 38 - DAYS JUGGERNAUT P086 (AI) (S)

P086

BIRTH DATE - 13/05/2018

POLL STATUS - SCURRED

PIGMENT - 100/100

ALLENDALE VAGABOND A74 (AI) (P)
ALLENDALE WATERHOUSE D1 (PP)
ALLENDALE MARLINE X185 (P)

ALLENDALE WATERHOUSE D1 (PP)
DAYS WIZARD F5 (AI) (ET) (S)
ALLENDALE DAWN Z21 (AI) (P)

SIRE - DAYS EXECUTIVE K168 (PP)

DAM - DAYS MOONSHINE K304 (AI) (P)

ALLENDALE TIPPERARY D13 (AI) (ET) (P)
DAYS SILVIA G13 (AI) (P)
DAYS SILVIA E30 (AI) (P)

ALLENDALE TIPPERARY D13 (AI) (ET) (P)
DAYS MOONSHINE G314 (AI) (P)
VALMA GOLD'S MOONSHINE Y54 (P)

DECEMBER 2019 GROUP BREEDPLAN EBVS							
CE DIR	CE DTRS	GL	BWT	200W	400W	600W	MCW
-2.8	+2.9	-2.7	+6.7	+43	+75	+103	+93
44%	36%	77%	75%	70%	71%	74%	66%
MILK	SS	CWT	EMA	RIB	RUMP	RBV%	IMF%
+19	+3.8	+63	+6.0	-0.7	-1.0	+2.8	-0.4
50%	79%	61%	53%	57%	62%	55%	58%

\$ INDEX VALUE	
SSR	+\$156
NSR	+\$139
SBM	+\$151
NBT	+\$106

A bull with a very good carcass and great growth EBV's.

PURCHASER:..... \$.....

EBV in Top 10% EBV in Top 20%

Acc. ALLEDALE

Lot 39 - ALLEDALE ESKIMO P122 (ET) (PP)

P122

BIRTH DATE - 28/05/2018

POLL STATUS - HOMOZYGOUS

PIGMENT - 100/100

CHURCHILL SENSATION 028X (H)
 CHURCHILL RED BULL 200Z (P)
 CHURCHILL LADY 002X ET (P)

DEBARRY EDEN (PP)
 ALLEDALE WALHALLOW D149 (AI) (P)
 ALLEDALE CORA W35 (P)

SIRE - CHURCHILL KICKSTART 501C (IMP USA) (AI) (ET) (P)

DAM - ALLEDALE SILVIA F62 (PP)

HVH KREMLIN 57F 108K (P)
 HVH OKSANA 4L 33N (P)
 HVH GENETIC QUEEN 53H 4L (P)

ALLEDALE TRAFFORD B6 (AI) (ET) (S)
 ALLEDALE SILVIA D170 (P)
 ALLEDALE SILVIA A37 (AI) (ET) (P)

DECEMBER 2019 GROUP BREEDPLAN EBVS							
CE DIR	CE DTRS	GL	BWT	200W	400W	600W	MCW
+11.3	+5.3	-2.2	+2.6	+33	+64	+82	+74
45%	28%	61%	71%	67%	66%	65%	58%
MILK	SS	CWT	EMA	RIB	RUMP	RBV%	IMF%
+15	+1.6	+64	+4.9	-0.1	-0.9	+2.2	-0.6
44%	74%	54%	47%	51%	56%	49%	50%

\$ INDEX VALUE	
SSR	+\$159
NSR	+\$148
SBM	+\$184
NBT	+\$139

A long, smooth bull by new US sire Kickstart. F62 dam of a bull that sold for \$16,000 to Larry Wallace at Wodonga. F62 has an outstanding Chisel L3 son for next year.

PURCHASER:..... \$.....



EBV in **Top 10%**

EBV in **Top 20%**

Acc. ALLEDALE

Lot 40 - ALLEDALE INVERELL P101 (AI) (PP)

P101

BIRTH DATE - 16/05/2018

POLL STATUS - HOMOZYGOUS

PIGMENT - 100/100

CHURCHILL SENSATION 028X (H)
 CHURCHILL RED BULL 200Z (P)
 CHURCHILL LADY 002X ET (P)

ALLEDALE SUPERSTAR B28 (AI) (ET) (S)
 ALLEDALE YALLARO 2 (AI) (TW) (PP)
 ALLEDALE FANCY A181 (AI) (P)

SIRE - CHURCHILL KICKSTART 501C (IMP USA) (AI) (ET) (P)

DAM - ALLEDALE FANCY G108 (P)

HVH KREMLIN 57F 108K (P)
 HVH OKSANA 4L 33N (P)
 HVH GENETIC QUEEN 53H 4L (P)

BRAXTON WESTWIND 120M (IMP NZL) (P)
 ALLEDALE FANCY A158 (AI) (ET) (S)
 ALLEDALE FANCY V190 (AI) (P)

DECEMBER 2019 GROUP BREEDPLAN EBVS							
CE DIR	CE DTRS	GL	BWT	200W	400W	600W	MCW
+2.4	+3.0	-3.3	+6.2	+45	+77	+107	+108
47%	31%	75%	74%	69%	69%	72%	64%
MILK	SS	CWT	EMA	RIB	RUMP	RBV%	IMF%
+10	+2.6	+70	+2.9	-0.7	-1.9	+1.7	-0.2
42%	77%	59%	49%	53%	58%	51%	52%

\$ INDEX VALUE	
SSR	+\$162
NSR	+\$144
SBM	+\$169
NBT	+\$125

Powerful Kickstart son. P101 gets a fair bit of grunt from Yallaro. A really good half brother sold to TRT Pastrol at last years sale.

PURCHASER:..... \$.....



EJS

LOT 40

EBV in Top 10%

EBV in Top 20%

Acc. ALLENDALE

Lot 41 - ALLENDALE JINDALEE P097 (PP)

P097

BIRTH DATE - 14/05/2018

POLL STATUS - HOMOZYGOUS

PIGMENT - 100/100

ALLENDALE YACKA (AI) (P)
 ALLENDALE ANZAC E114 (PP)
 ALLENDALE DAWN B22 (AI) (ET) (P)

SHF WONDER M326 W18 ET (P)
 REMITALL-WEST GAME DAY ET 74Y (IMP CAN) (P)
 REMITALL MARVEL 78T (IMP CAN) (P)

SIRE - ALLENDALE GALILEO M112 (AI) (PP)

DAM - ALLENDALE FANCY M008 (ET) (P)

MORGANVALE FEVOLA (AI) (P)
 ALLENDALE FANCY H32 (PP)
 ALLENDALE FANCY F82 (AI) (P)

ALLENDALE OVERTON (P)
 ALLENDALE FANCY Z59 (P)
 ALLENDALE FANCY V35 (P)

DECEMBER 2019 GROUP BREEDPLAN EBVS							
CE DIR	CE DTRS	GL	BWT	200W	400W	600W	MCW
-2.7	+2.9	-2.0	+7.4	+43	+74	+105	+111
41%	35%	55%	69%	63%	64%	67%	60%
MILK	SS	CWT	EMA	RIB	RUMP	RBV%	IMF%
+17	+3.8	+63	+3.2	+0.8	+0.8	-0.2	+1.1
47%	75%	54%	47%	50%	54%	48%	48%

\$ INDEX VALUE	
SSR	+\$140
NSR	+\$118
SBM	+\$136
NBT	+\$103

A long, smooth, heifers first calf. Granddam Z59 mother of our Washington bulls and still working at 15 years old.

PURCHASER:..... \$.....

Lot 42 - ALLENDALE INSANE P124 (PP)

P124

BIRTH DATE - 28/05/2018

POLL STATUS - HOMOZYGOUS

PIGMENT - 100/100

ALLENDALE WATERHOUSE D1 (PP)
 DAYS ROBIN HOOD H38 (AI) (ET) (PP)
 ALLENDALE FANCY U5 (AI) (P)

ALLENDALE ADVANTAGE E14 (AI) (P)
 ALLENDALE DIXY H107 (AI) (S)
 ALLENDALE LAST DAY E10 (P)

SIRE - ALLENDALE CHISEL L3 (ET) (PP)

DAM - ALLENDALE CORA K66 (P)

SOUTH BUKALONG SHANNON 40 (PP)
 ALLENDALE CORA D47 (AI) (P)
 ALLENDALE CORA B7 (AI) (P)

MERRINA A74 REACTOR E148 (P)
 ALLENDALE CORA H76 (P)
 ALLENDALE CORA C193 (P)

DECEMBER 2019 GROUP BREEDPLAN EBVS							
CE DIR	CE DTRS	GL	BWT	200W	400W	600W	MCW
+3.4	+2.5	-1.2	+5.2	+43	+68	+97	+93
41%	32%	50%	73%	68%	68%	71%	63%
MILK	SS	CWT	EMA	RIB	RUMP	RBV%	IMF%
+21	+2.0	+65	+4.2	+0.4	+1.4	+0.8	+0.3
47%	77%	58%	49%	54%	58%	51%	52%

\$ INDEX VALUE	
SSR	+\$153
NSR	+\$139
SBM	+\$163
NBT	+\$124

Chisel L3 son with extra frame. Dam K66 had a son sell to the Henty Anderson's for \$10,000 at last years sale.

PURCHASER:..... \$.....

EBV in **Top 10%**

EBV in **Top 20%**

Acc. ALLENDALE

Lot 43 - ALLENDALE JEEPERS P077 (PP)

P077

BIRTH DATE - 11/05/2018

POLL STATUS - HOMOZYGOUS

PIGMENT - 100/90

ALLENDALE YACKA (AI) (P)
 ALLENDALE ANZAC E114 (PP)
 ALLENDALE DAWN B22 (AI) (ET) (P)

WIRRUNA GEELONG G171 (AI) (PP)
 ALLENDALE JI FREEWAY K28 (AI) (PP)
 ABBERLEY MARLINE H10 (AI) (P)

SIRE - ALLENDALE GALILEO M112 (AI) (PP)

DAM - ALLENDALE MARLINE M058 (P)

MORGANVALE FEVOLA (AI) (P)
 ALLENDALE FANCY H32 (PP)
 ALLENDALE FANCY F82 (AI) (P)

ALLENDALE WASHINGTON G82 (ET) (P)
 ALLENDALE MARLINE K135 (P)
 ALLENDALE MARLINE C23 (AI) (ET) (P)

DECEMBER 2019 GROUP BREEDPLAN EBVS							
CE DIR	CE DTRS	GL	BWT	200W	400W	600W	MCW
+7.0	+5.6	-0.8	+1.8	+33	+54	+86	+55
38%	31%	53%	70%	63%	64%	68%	60%
MILK	SS	CWT	EMA	RIB	RUMP	RBV%	IMF%
+21	+2.0	+59	+3.9	+1.3	+1.9	+0.3	+1.6
45%	75%	54%	46%	50%	54%	48%	47%

\$ INDEX VALUE	
SSR	+\$181
NSR	+\$165
SBM	+\$192
NBT	+\$135

Smooth, deep bodied bull that would make a top end heifer bull. Good figures and pedigree

PURCHASER:..... \$.....

Lot 44 - ALLENDALE JABIRU P114 (PP)

P114

BIRTH DATE - 25/05/2018

POLL STATUS - HOMOZYGOUS

PIGMENT - 100/100

ALLENDALE YACKA (AI) (P)
 ALLENDALE ANZAC E114 (PP)
 ALLENDALE DAWN B22 (AI) (ET) (P)

WIRRUNA GEELONG G171 (AI) (PP)
 ALLENDALE JI FREEWAY K28 (AI) (PP)
 ABBERLEY MARLINE H10 (AI) (P)

SIRE - ALLENDALE GALILEO M112 (AI) (PP)

DAM - ALLENDALE DAWN M027 (AI) (P)

MORGANVALE FEVOLA (AI) (P)
 ALLENDALE FANCY H32 (PP)
 ALLENDALE FANCY F82 (AI) (P)

ALLENDALE COWBOY H23 (AI) (P)
 ALLENDALE DAWN K122 (P)
 ALLENDALE DAWN G141 (P)

DECEMBER 2019 GROUP BREEDPLAN EBVS							
CE DIR	CE DTRS	GL	BWT	200W	400W	600W	MCW
+4.3	+3.5	-0.2	+4.8	+41	+64	+94	+85
37%	30%	56%	70%	63%	64%	68%	60%
MILK	SS	CWT	EMA	RIB	RUMP	RBV%	IMF%
+16	+1.4	+63	+3.4	-0.2	-0.1	+1.1	+0.4
44%	75%	53%	45%	50%	54%	48%	47%

\$ INDEX VALUE	
SSR	+\$146
NSR	+\$130
SBM	+\$163
NBT	+\$123

Long, smooth skinned Galileo son. Heifers first calf. The JI Freeway daughters look like they may be good.

PURCHASER:..... \$.....

EBV in **Top 10%** EBV in **Top 20%**

Acc. ALLENDALE

Lot 45 - ALLENDALE JESTER P024 (AI) (PP)

P024

BIRTH DATE - 12/04/2018

POLL STATUS - HOMOZYGOUS

PIGMENT - 100/100

CHURCHILL SENSATION 028X (H)
 CHURCHILL RED BULL 200Z (P)
 CHURCHILL LADY 002X ET (P)

MERAWAH ELLIOTT F115 (PP)
 KERLSON PINES JESTER J99 (PP)
 KERLSON PINES U-BEAUTY C34 (P)

SIRE - CHURCHILL KICKSTART 501C (IMP USA) (AI) (ET) (P)

DAM - ALLENDALE FANCY M040 (AI) (P)

HVH KREMLIN 57F 108K (P)
 HVH OKSANA 4L 33N (P)
 HVH GENETIC QUEEN 53H 4L (P)

ALLENDALE WASHINGTON G82 (ET) (P)
 ALLENDALE FCF FANCY J80 (TW) (P)
 ALLENDALE FANCY D207 (AI) (P)

DECEMBER 2019 GROUP BREEDPLAN EBVS							
CE DIR	CE DTRS	GL	BWT	200W	400W	600W	MCW
+6.3	+4.0	-4.9	+4.8	+38	+75	+105	+104
44%	26%	75%	73%	68%	68%	71%	63%
MILK	SS	CWT	EMA	RIB	RUMP	RBV%	IMF%
+16	+3.4	+74	+4.8	+1.0	+0.9	+0.9	+0.3
32%	77%	57%	48%	52%	57%	50%	50%

\$ INDEX VALUE	
SSR	+\$178
NSR	+\$163
SBM	+\$190
NBT	+\$143

Long, deep heifers first calf. Granddam J80 dam of lot 7. Different pedigree and excellent numbers.

PURCHASER:..... \$.....

Lot 46 - ALLENDALE JETHRO P093 (AI) (S)

P093

BIRTH DATE - 14/05/2018

POLL STATUS - SCURRED

PIGMENT - 60/100

ALLENDALE ANZAC E114 (PP)
 ALLENDALE CHINCHILLA J23 (AI) (P)
 ALLENDALE FANCY B115 (P)

ALLENDALE WATERHOUSE D1 (PP)
 ALLENDALE WASHINGTON G82 (ET) (P)
 ALLENDALE FANCY Z59 (P)

SIRE - ALLENDALE GAMBLER L143 (P)

DAM - ALLENDALE CORA L105 (P)

ALLENDALE WALHOLLOW D149 (AI) (P)
 ALLENDALE LAST DAY F57 (PP)
 ALLENDALE LAST DAY D45 (AI) (P)

OKAWA COMMODORE 020076 (IMP NZL) (P)
 ALLENDALE CORA C14 (AI) (P)
 MOORLANDS CORA W063 (H)

DECEMBER 2019 GROUP BREEDPLAN EBVS							
CE DIR	CE DTRS	GL	BWT	200W	400W	600W	MCW
-1.2	+1.3	+1.5	+8.3	+44	+68	+100	+96
42%	31%	74%	73%	68%	68%	71%	63%
MILK	SS	CWT	EMA	RIB	RUMP	RBV%	IMF%
+21	+3.8	+61	+6.1	+1.0	+1.3	+1.3	+0.5
46%	77%	58%	48%	53%	57%	50%	51%

\$ INDEX VALUE	
SSR	+\$149
NSR	+\$132
SBM	+\$146
NBT	+\$108

A long, deep bull with plenty of growth and muscle

PURCHASER:..... \$.....

EBV in **Top 10%**

EBV in **Top 20%**

Acc. DAYS WHITEFACE

Lot 47 - DAYS JUBILEE P105 (AI) (S)

P105

BIRTH DATE - 20/05/2018

POLL STATUS - SCURRED

PIGMENT - 95/100

CL 1 DOMINO 9126J 1ET (H)
KCF BENNETT 9126J R294 (P)
KCF MISS 3008 N344 (P)

ALLENDALE WATERHOUSE D1 (PP)
DAYS ROBIN HOOD H38 (AI) (ET) (PP)
ALLENDALE FANCY U5 (AI) (P)

SIRE - GERBER ANODYNE 001A (IMP) (S)

DAM - DAYS FANCY L50 (P)

GERBER SQUIRE 627S (P)
GERBER 627S HOLLY 096Y (P)
GERBER 116K HOLLY T115 (P)

DAYS BRAVADO F152 (P)
DAYS FANCY H213 (P)
ALLENDALE FANCY B192 (P)

DECEMBER 2019 GROUP BREEDPLAN EBVS							
CE DIR	CE DTRS	GL	BWT	200W	400W	600W	MCW
+1.7	+3.6	-3.1	+3.2	+37	+59	+84	+70
38%	27%	73%	71%	65%	66%	69%	59%
MILK	SS	CWT	EMA	RIB	RUMP	RBV%	IMF%
+21	+1.9	+65	+6.4	+0.8	+1.5	+1.4	+0.5
37%	75%	55%	46%	50%	55%	47%	47%

\$ INDEX VALUE	
SSR	+\$149
NSR	+\$140
SBM	+\$153
NBT	+\$111

Deep quality bull with EMA in top 5%.

PURCHASER:..... \$.....

Lot 48 - DAYS P077 (AI) (S)

P077

BIRTH DATE - 11/05/2018

POLL STATUS - SCURRED

PIGMENT - 100/100

CL 1 DOMINO 9126J 1ET (H)
KCF BENNETT 9126J R294 (P)
KCF MISS 3008 N344 (P)

ALLENDALE WATERHOUSE D1 (PP)
DAYS ROBIN HOOD H38 (AI) (ET) (PP)
ALLENDALE FANCY U5 (AI) (P)

SIRE - GERBER ANODYNE 001A (IMP) (S)

DAM - DAYS FANCY L7 (AI) (ET) (P)

GERBER SQUIRE 627S (P)
GERBER 627S HOLLY 096Y (P)
GERBER 116K HOLLY T115 (P)

TAS BALTIMORE A14 (AI) (P)
ALLENDALE FANCY D165 (P)
ALLENDALE FANCY A213 (P)

DECEMBER 2019 GROUP BREEDPLAN EBVS							
CE DIR	CE DTRS	GL	BWT	200W	400W	600W	MCW
-0.5	+3.5	-3.7	+5.4	+41	+69	+105	+101
39%	28%	73%	72%	66%	66%	70%	61%
MILK	SS	CWT	EMA	RIB	RUMP	RBV%	IMF%
+17	+2.8	+71	+5.0	+0.5	+0.7	+1.4	+0.0
36%	75%	55%	46%	51%	55%	48%	48%

\$ INDEX VALUE	
SSR	+\$164
NSR	+\$148
SBM	+\$162
NBT	+\$115

Long, deep bodied bull with high growth EBV's.

PURCHASER:..... \$.....

EBV in Top 10% EBV in Top 20%

Acc. DAYS WHITEFACE

Lot 49 - DAYS JUSTIFY P083 (AI) (PP)

P083

BIRTH DATE - 12/05/2018

POLL STATUS - HOMOZYGOUS

PIGMENT - 100/100

CL 1 DOMINO 9126J 1ET (H)
KCF BENNETT 9126J R294 (P)
KCF MISS 3008 N344 (P)

ALLEDALE WATERHOUSE D1 (PP)
DAYS ROBIN HOOD H38 (AI) (ET) (PP)
ALLEDALE FANCY U5 (AI) (P)

SIRE - GERBER ANODYNE 001A (IMP) (S)

DAM - DAYS MARLINE L144 (P)

GERBER SQUIRE 627S (P)
GERBER 627S HOLLY 096Y (P)
GERBER 116K HOLLY T115 (P)

DAYS ARMSTRONG E312 (P)
DAYS MARLINE H139 (P)
ALLEDALE MARLINE B3 (AI) (P)

DECEMBER 2019 GROUP BREEDPLAN EBVS							
CE DIR	CE DTRS	GL	BWT	200W	400W	600W	MCW
+8.1	+6.0	-5.2	+0.4	+25	+41	+50	+42
38%	27%	72%	72%	66%	66%	70%	61%
MILK	SS	CWT	EMA	RIB	RUMP	RBV%	IMF%
+17	+1.4	+42	+3.7	+0.5	+0.5	+0.8	+0.0
37%	75%	55%	46%	51%	55%	48%	48%

\$ INDEX VALUE	
SSR	+\$109
NSR	+\$105
SBM	+\$126
NBT	+\$95

Correct, good hind quartered heifer bull.

PURCHASER:..... \$.....

Lot 50 - DAYS JUMPSTART P137 (PP)

P137

BIRTH DATE - 27/05/2018

POLL STATUS - HOMOZYGOUS

PIGMENT - 100/100

TH 71U 719T MR HEREFORD 11X (IMP USA) (P)
DAYS WIZARD J204 (AI) (ET) (S)
ALLEDALE DAWN Z21 (AI) (P)

DAYS CALIBRE G74 (PP)
DAYS WIZARD K5 (AI) (ET) (S)
ALLEDALE DAWN Z21 (AI) (P)

SIRE - DAYS HORIZON M028 (AI) (PP)

DAM - DAYS FANCY M180 (P)

DAYS ROBIN HOOD H38 (AI) (ET) (PP)
DAYS FANCY K26 (AI) (P)
DAYS FANCY H31 (AI) (ET) (P)

ALLEDALE WATERHOUSE D1 (PP)
DAYS FANCY H176 (TW) (P)
ALLEDALE FANCY A243 (P)

DECEMBER 2019 GROUP BREEDPLAN EBVS							
CE DIR	CE DTRS	GL	BWT	200W	400W	600W	MCW
+5.5	+6.3	-3.4	+2.4	+31	+48	+57	+46
37%	29%	55%	71%	65%	66%	70%	60%
MILK	SS	CWT	EMA	RIB	RUMP	RBV%	IMF%
+11	+2.7	+44	+6.0	+2.0	+3.4	+0.3	+0.8
45%	77%	56%	47%	52%	56%	49%	51%

\$ INDEX VALUE	
SSR	+\$134
NSR	+\$141
SBM	+\$139
NBT	+\$100

Like the previous Lot, a good hind quartered correct heifer bull. Horizon M028 sold for \$26,000 to Yarram Park.

PURCHASER:..... \$.....

EBV in **Top 10%**

EBV in **Top 20%**

Acc. DAYS WHITEFACE

Lot 51 - DAYS P024 (AI) (S)

P024

BIRTH DATE - 30/04/2018

POLL STATUS - SCURRED

PIGMENT - 100/100

CL 1 DOMINO 9126J 1ET (H)
 KCF BENNETT 9126J R294 (P)
 KCF MISS 3008 N344 (P)
SIRE - GERBER ANODYNE 001A (IMP) (S)
 GERBER SQUIRE 627S (P)
 GERBER 627S HOLLY 096Y (P)
 GERBER 116K HOLLY T115 (P)

DAYS CALIBRE G74 (PP)
 DAYS ROBIN HOOD J183 (PP)
 ALLENDALE FANCY U5 (AI) (P)
DAM - DAYS CHERRY RIPE M044 (AI) (P)
 TH 70R 11X MR HEREFORD 34Z (IMP USA) (P)
 DAYS CHERRY RIPE K125 (AI) (P)
 DAYS CHERRY RIPE H93 (P)

DECEMBER 2019 GROUP BREEDPLAN EBVS							
CE DIR	CE DTRS	GL	BWT	200W	400W	600W	MCW
+6.6		-3.6	+3.1	+35	+59	+83	+67
35%		74%	71%	65%	66%	69%	61%
MILK	SS	CWT	EMA	RIB	RUMP	RBV%	IMF%
+20	+2.5	+61	+4.7	+0.6	+0.4	+1.1	+0.8
31%	74%	54%	44%	50%	55%	47%	46%

\$ INDEX VALUE	
SSR	+\$160
NSR	+\$147
SBM	+\$173
NBT	+\$128

Well balanced smooth bodied heifer bull.

PURCHASER:..... \$.....

Lot 52 - DAYS P057 (AI) (S)

P057

BIRTH DATE - 06/05/2018

POLL STATUS - SCURRED

PIGMENT - 100/95

CL 1 DOMINO 9126J 1ET (H)
 KCF BENNETT 9126J R294 (P)
 KCF MISS 3008 N344 (P)
SIRE - GERBER ANODYNE 001A (IMP) (S)
 GERBER SQUIRE 627S (P)
 GERBER 627S HOLLY 096Y (P)
 GERBER 116K HOLLY T115 (P)

ALLENDALE WATERHOUSE D1 (PP)
 DAYS ELABORATE K107 (PP)
 DAYS CORA E38 (AI) (P)
DAM - DAYS MARLINE M173 (P)
 DAYS ARMSTRONG E312 (P)
 DAYS MARLINE H139 (P)
 ALLENDALE MARLINE B3 (AI) (P)

DECEMBER 2019 GROUP BREEDPLAN EBVS							
CE DIR	CE DTRS	GL	BWT	200W	400W	600W	MCW
+7.5		-2.2	+1.6	+30	+48	+66	+45
34%		72%	71%	65%	65%	69%	59%
MILK	SS	CWT	EMA	RIB	RUMP	RBV%	IMF%
+20	+2.8	+51	+3.1	+1.2	+1.0	-0.2	+1.0
31%	74%	54%	44%	49%	54%	47%	46%

\$ INDEX VALUE	
SSR	+\$139
NSR	+\$124
SBM	+\$150
NBT	+\$108

Thick strong topped low birthweight heifer bull.

PURCHASER:..... \$.....

EBV in **Top 10%** EBV in **Top 20%**

Acc. DAYS WHITEFACE

Lot 53 - DAYS GOONDIWINDI P197 (AI) (PP)

P197

BIRTH DATE - 10/06/2018

POLL STATUS - HOMOZYGOUS

PIGMENT - 100/100

ALLENDALE ANZAC E114 (PP)
 ALLENDALE CHINCHILLA J23 (AI) (PP)
 ALLENDALE FANCY B115 (P)

ALLENDALE VAGABOND A74 (AI) (P)
 ALLENDALE WATERHOUSE D1 (PP)
 ALLENDALE MARLINE X185 (P)

SIRE - ALLENDALE GAMBLER L143 (P)

DAM - DAYS SHAMROCK H18 (P)

ALLENDALE WALHALLOW D149 (AI) (P)
 ALLENDALE LAST DAY F57 (PP)
 ALLENDALE LAST DAY D45 (AI) (P)

REMITALL HOLLYWOOD 37H (IMP CAN) (P)
 MERAWAH SHAMROCK W99 (AI) (P)
 MERAWAH SHAMROCK Q38 (P)

DECEMBER 2019 GROUP BREEDPLAN EBVS							
CE DIR	CE DTRS	GL	BWT	200W	400W	600W	MCW
-2.5	+2.9	+1.5	+5.7	+36	+58	+82	+60
43%	34%	74%	73%	69%	69%	72%	64%
MILK	SS	CWT	EMA	RIB	RUMP	RBV%	IMF%
+15	+1.8	+55	+7.7	+1.9	+2.7	+1.0	+1.2
49%	77%	59%	51%	55%	59%	52%	54%

\$ INDEX VALUE	
SSR	+\$152
NSR	+\$143
SBM	+\$140
NBT	+\$93

Easy doing bull with a very good skin and excellent carcass.

PURCHASER:..... \$.....



LOT 53

EBV in **Top 10%**

EBV in **Top 20%**

Acc. DAYS WHITEFACE

Lot 54 - DAYS P071 (AI) (TW) (S)

P071

BIRTH DATE - 10/05/2018

POLL STATUS - SCURRED

PIGMENT - 100/100

CL 1 DOMINO 9126J 1ET (H)
KCF BENNETT 9126J R294 (P)
KCF MISS 3008 N344 (P)

ALLENDALE WATERHOUSE D1 (PP)
DAYS ROBIN HOOD H38 (AI) (ET) (PP)
ALLENDALE FANCY U5 (AI) (P)

SIRE - GERBER ANODYNE 001A (IMP) (S)
GERBER SQUIRE 627S (P)
GERBER 627S HOLLY 096Y (P)
GERBER 116K HOLLY T115 (P)

DAM - DAYS DAISY L49 (P)
PINE HILL ENERGISE E604 (AI) (P)
DAYS DAISY H44 (P)
DAYS DAISY F57 (AI) (P)

DECEMBER 2019 GROUP BREEDPLAN EBVS							
CE DIR	CE DTRS	GL	BWT	200W	400W	600W	MCW
-0.5	+3.2	-3.2	+4.8	+41	+63	+90	+80
39%	28%	57%	70%	61%	59%	61%	54%
MILK	SS	CWT	EMA	RIB	RUMP	RBV%	IMF%
+19	+2.2	+64	+5.0	+0.5	+0.7	+1.1	+0.5
35%	55%	49%	40%	45%	49%	42%	45%

\$ INDEX VALUE	
SSR	+\$143
NSR	+\$128
SBM	+\$142
NBT	+\$103

Very good bodied Anodyne son.

PURCHASER: \$.....



LOT 54

EBV in Top 10%

EBV in Top 20%

Acc. DAYS WHITEFACE

Lot 55 - DAYS HALLMARK P149 (AI) (ET) (PP)

P149

BIRTH DATE - 30/05/2018

POLL STATUS - HOMOZYGOUS

PIGMENT - 100/100

SCHU-LAR ON TARGET 22S (IMP USA) (ET) (P)

SOUTH BUKALONG WALKER 6 (AI) (P)

HYALITE ON TARGET 936 (P)

SOUTH BUKALONG WALLACE 2 (P)

HYALITE TS LASS 310 (P)

SOUTH BUKALONG VICTORIA 152 (P)

SIRE - R LEADER 6964 (IMP USA) (PP)

DAM - DUNOON UNA H510 (AI) (P)

MSU TCF REVOLUTION 4R (IMP USA) (PP)

ALLEDALE NATIONAL W168 (PP)

R MISS REVOLUTION 1009 (P)

DUNOON UNA D532 (AI) (P)

R MISS WRANGLER 3007 (P)

DUNOON UNA Y160 (H)

DECEMBER 2019 GROUP BREEDPLAN EBVS							
CE DIR	CE DTRS	GL	BWT	200W	400W	600W	MCW
+6.2	+3.5	+0.7	+2.7	+42	+59	+81	+47
51%	42%	65%	73%	68%	67%	69%	61%
MILK	SS	CWT	EMA	RIB	RUMP	RBV%	IMF%
+18	+2.2	+62	+3.7	+1.7	+2.1	-0.2	+1.5
55%	71%	58%	51%	55%	58%	51%	55%

\$ INDEX VALUE	
SSR	+\$174
NSR	+\$162
SBM	+\$179
NBT	+\$126

Excellent bodied low birthweight Leader son. A full brother to Lot 5.

PURCHASER:..... \$.....



EBV in **Top 10%**

EBV in **Top 20%**

Acc. DAYS WHITEFACE

Lot 56 - DAYS JOKER P185 (S)

P185

BIRTH DATE - 05/06/2018

POLL STATUS - SCURRED

PIGMENT - 100/100

MATARIKI HOLY - SMOKE (IMP NZL) (P)
 WIRRUNA JUSTIN J13 (AI) (PP)
 WIRRUNA DOREEN G393 (P)

PINE HILL CAVALIER C568 (AI) (P)
 INJEMIRA CAVALIER G032 (P)
 INJEMIRA LIONESS B038 (AI) (H#)

SIRE - DAYS FERRARI M080 (AI) (PP)

DAM - DAYS FANCY L180 (P)

ALLENDALE WATERHOUSE D1 (PP)
 DAYS GLADIOLA H184 (P)
 ALLENDALE GLADIOLA X178 (P)

DAYS WIZARD F5 (AI) (ET) (S)
 DAYS FANCY H41 (P)
 DAYS FANCY F49 (AI) (P)

DECEMBER 2019 GROUP BREEDPLAN EBVS							
CE DIR	CE DTRS	GL	BWT	200W	400W	600W	MCW
+6.0	+5.0	-2.1	+4.8	+42	+65	+88	+73
37%	30%	50%	66%	63%	64%	67%	58%
MILK	SS	CWT	EMA	RIB	RUMP	RBV%	IMF%
+20	+1.7	+60	+4.0	+1.3	+1.7	+0.3	+0.3
44%	75%	54%	46%	50%	54%	48%	48%

\$ INDEX VALUE	
SSR	+\$161
NSR	+\$146
SBM	+\$170
NBT	+\$123

Thick well-muscled bull with a balanced set of EBV's.

PURCHASER:..... \$.....

Lot 57 - DAYS JERICHO P239 (PP)

P239

BIRTH DATE - 30/06/2018

POLL STATUS - HOMOZYGOUS

PIGMENT - 100/100

TH 71U 719T MR HEREFORD 11X (IMP USA) (P)
 TH 70R 11X MR HEREFORD 34Z (IMP USA) (P)
 TH 172J 57G QUEEN MAKER 70R (P)

MM STOCKMASTER 092 (P)
 MM RSM STOCKMASTER 512 (IMP USA) (P)
 MM MISS MASTER 977 (P)

SIRE - DAYS BENEDICT M099 (AI) (PP)

DAM - DAYS DAWN G81 (AI) (ET) (P)

MARKOWEN INTRUDER (PP)
 ALLENDALE MISS REGAL D138 (TW) (P)
 SILVERTON MISS REGAL W044 (H)

ALLENDALE NATIONAL W168 (PP)
 ALLENDALE DAWN Z21 (AI) (P)
 ALLENDALE DAWN V54 (AI) (P)

DECEMBER 2019 GROUP BREEDPLAN EBVS							
CE DIR	CE DTRS	GL	BWT	200W	400W	600W	MCW
-1.1	-3.8	+0.4	+3.3	+34	+50	+65	+39
42%	36%	56%	71%	66%	66%	69%	61%
MILK	SS	CWT	EMA	RIB	RUMP	RBV%	IMF%
+15	+2.1	+49	+4.4	+1.3	+1.3	+0.5	+1.0
50%	76%	56%	48%	52%	56%	50%	49%

\$ INDEX VALUE	
SSR	+\$121
NSR	+\$111
SBM	+\$110
NBT	+\$78

Well balanced, thick bodied bull. Benedict M099 sold for \$16,000 to Senior Park.

PURCHASER:..... \$.....

EBV in Top 10% EBV in Top 20%

Acc. ALLENDALE

Lot 58 - ALLENDALE JACK-IN-A-BOX P050 (AI) (PP)

P050

BIRTH DATE - 21/04/2018

POLL STATUS - HOMOZYGOUS

PIGMENT - 100/100

ALLENDALE YALLARO I 2 (AI) (TW) (PP)

ALLENDALE CHISEL G161 (P)

ALLENDALE CORA D47 (AI) (P)

SIRE - ALLENDALE ANZAC M009 (ET) (PP)

ALLENDALE NATIONAL W168 (PP)

ALLENDALE DAWN B22 (AI) (ET) (P)

ALLENDALE DAWN T60 (AI) (P)

SHF WONDER M326 W18 ET (P)

REMITALL-WEST GAME DAY ET 74Y (IMP CAN) (P)

REMITALL MARVEL 78T (IMP CAN) (P)

DAM - ALLENDALE BLISSFUL M023 (AI) (P)

ALLENDALE ADVANTAGE E14 (AI) (P)

ALLENDALE BLISSFUL K49 (AI) (P)

BURANDO OCT BLISSFUL 82 (P)

DECEMBER 2019 GROUP BREEDPLAN EBVS							
CE DIR	CE DTRS	GL	BWT	200W	400W	600W	MCW
+2.7	+3.5	-1.0	+3.2	+37	+59	+71	+61
42%	33%	74%	73%	67%	67%	70%	63%
MILK	SS	CWT	EMA	RIB	RUMP	RBV%	IMF%
+20	+3.5	+52	+3.0	+1.0	+1.2	-0.3	+0.7
45%	76%	57%	47%	52%	56%	50%	50%

\$ INDEX VALUE	
SSR	+\$122
NSR	+\$110
SBM	+\$126
NBT	+\$94

Deep, heavy bodied heifers first calf. Hard working females in this bulls pedigree

PURCHASER:..... \$.....



EBV in **Top 10%**

EBV in **Top 20%**

Acc. ALLENDALE

Lot 59 - ALLENDALE JONO P128 (PP)

P128

BIRTH DATE - 29/05/2018

POLL STATUS - HOMOZYGOUS

PIGMENT - 100/100

ALLENDALE WATERHOUSE D1 (PP)
 DAYS ROBIN HOOD H38 (AI) (ET) (PP)
 ALLENDALE FANCY U5 (AI) (P)

ALLENDALE YACKA (AI) (P)
 ALLENDALE ANZAC E114 (PP)
 ALLENDALE DAWN B22 (AI) (ET) (P)

SIRE - ALLENDALE CHISEL L3 (ET) (PP)

DAM - ALLENDALE FANCY H25 (AI) (PP)

SOUTH BUKALONG SHANNON 40 (PP)
 ALLENDALE CORA D47 (AI) (P)
 ALLENDALE CORA B7 (AI) (P)

ALLENDALE TOP NOTCH Z52 (AI) (TW) (P)
 ALLENDALE FANCY B115 (P)
 ALLENDALE FANCY Z13 (P)

DECEMBER 2019 GROUP BREEDPLAN EBVS							
CE DIR	CE DTRS	GL	BWT	200W	400W	600W	MCW
+5.7	+4.0	-4.9	+3.6	+37	+58	+75	+81
46%	38%	60%	74%	69%	69%	72%	65%
MILK	SS	CWT	EMA	RIB	RUMP	RBV%	IMF%
+12	+2.2	+50	+4.3	+0.0	+0.8	+0.5	+1.0
53%	63%	60%	52%	56%	60%	54%	56%

\$ INDEX VALUE	
SSR	+\$127
NSR	+\$122
SBM	+\$142
NBT	+\$114

A thick, good hindquartered bull. Dam has been a donor and full brothers have sold to Glen Bowman for \$20,000 at Dubbo and Coryule Pastrol at \$17,000. Top price 2016.

PURCHASER:..... \$.....

Lot 60 - ALLENDALE EXPERT P145 (PP)

P145

BIRTH DATE - 05/06/2018

POLL STATUS - HOMOZYGOUS

PIGMENT - 100/100

ALLENDALE WATERHOUSE D1 (PP)
 DAYS ROBIN HOOD H38 (AI) (ET) (PP)
 ALLENDALE FANCY U5 (AI) (P)

OKAWA COMMODORE 020076 (IMP NZL) (P)
 ALLENDALE WASHINGTON D57 (AI) (P)
 ALLENDALE FANCY Z59 (P)

SIRE - ALLENDALE CHISEL L3 (ET) (PP)

DAM - ALLENDALE FANCY F77 (P)

SOUTH BUKALONG SHANNON 40 (PP)
 ALLENDALE CORA D47 (AI) (P)
 ALLENDALE CORA B7 (AI) (P)

ALLENDALE A88 (P)
 ALLENDALE FANCY D22 (P)
 ALLENDALE FANCY A243 (P)

DECEMBER 2019 GROUP BREEDPLAN EBVS							
CE DIR	CE DTRS	GL	BWT	200W	400W	600W	MCW
+5.2	+4.8	-1.1	+2.0	+28	+43	+56	+43
45%	36%	51%	74%	69%	69%	72%	64%
MILK	SS	CWT	EMA	RIB	RUMP	RBV%	IMF%
+10	+2.3	+42	+4.8	+1.5	+2.8	+0.5	+0.6
50%	77%	59%	50%	55%	59%	52%	53%

\$ INDEX VALUE	
SSR	+\$135
NSR	+\$137
SBM	+\$135
NBT	+\$95

Muscular, easy doing bull suitable for heifers

PURCHASER:..... \$.....

EBV in **Top 10%** EBV in **Top 20%**

Acc. ALLENDALE

Lot 61 - ALLENDALE JASPER P112 (PP)

P112

BIRTH DATE - 24/05/2018

POLL STATUS - HOMOZYGOUS

PIGMENT - 100/100

ALLENDALE WATERHOUSE D1 (PP)
DAYS ROBIN HOOD H38 (AI) (ET) (PP)
ALLENDALE FANCY U5 (AI) (P)

ALLENDALE YALLAROI 2 (AI) (TW) (PP)
ALLENDALE CHISEL G161 (P)
ALLENDALE CORA D47 (AI) (P)

SIRE - ALLENDALE CHISEL L3 (ET) (PP)

DAM - ALLENDALE DAISY K43 (AI) (P)

SOUTH BUKALONG SHANNON 40 (PP)
ALLENDALE CORA D47 (AI) (P)
ALLENDALE CORA B7 (AI) (P)

ALLENDALE YEMEN E39 (P)
ALLENDALE DAISY G50 (P)
ALLENDALE DAISY E111 (P)

DECEMBER 2019 GROUP BREEDPLAN EBVS							
CE DIR	CE DTRS	GL	BWT	200W	400W	600W	MCW
+0.4	+0.7	-3.9	+5.3	+42	+59	+76	+72
44%	34%	57%	74%	69%	69%	72%	63%
MILK	SS	CWT	EMA	RIB	RUMP	RBV%	IMF%
+8	+4.0	+51	+4.6	+0.8	+2.0	+0.8	+0.0
48%	77%	59%	50%	55%	59%	52%	54%

\$ INDEX VALUE	
SSR	+\$132
NSR	+\$132
SBM	+\$125
NBT	+\$91

Muscular, early maturing bull.

PURCHASER:..... \$.....

Lot 62 - ALLENDALE JAGUAR P099 (PP)

P099

BIRTH DATE - 15/05/2018

POLL STATUS - HOMOZYGOUS

PIGMENT - 100/100

ALLENDALE WATERHOUSE D1 (PP)
DAYS ROBIN HOOD H38 (AI) (ET) (PP)
ALLENDALE FANCY U5 (AI) (P)

ALLENDALE ANZAC E114 (PP)
ALLENDALE COLLINGWOOD J29 (AI) (PP)
ALLENDALE BLUE MIST E13 (P)

SIRE - ALLENDALE CHISEL L3 (ET) (PP)

DAM - ALLENDALE DAWN L90 (P)

SOUTH BUKALONG SHANNON 40 (PP)
ALLENDALE CORA D47 (AI) (P)
ALLENDALE CORA B7 (AI) (P)

MORGANVALE FEVOLA (AI) (P)
ALLENDALE DAWN H58 (P)
ALLENDALE DAWN F27 (AI) (P)

DECEMBER 2019 GROUP BREEDPLAN EBVS							
CE DIR	CE DTRS	GL	BWT	200W	400W	600W	MCW
+8.6	+5.9	-3.5	+0.4	+29	+52	+66	+57
42%	33%	51%	73%	68%	68%	71%	63%
MILK	SS	CWT	EMA	RIB	RUMP	RBV%	IMF%
+15	+2.1	+53	+4.7	+1.8	+3.4	-0.7	+1.5
46%	76%	58%	49%	54%	58%	51%	53%

\$ INDEX VALUE	
SSR	+\$147
NSR	+\$146
SBM	+\$160
NBT	+\$122

Quality bull suitable for heifers. Good carcass figures.

PURCHASER:..... \$.....

EBV in **Top 10%**

EBV in **Top 20%**

Acc. ALLEDALE

Lot 63 - ALLEDALE BULLS EYE P138 (S)

P138

BIRTH DATE - 01/06/2018

POLL STATUS - SCURRED

PIGMENT - 100/100

ALLEDALE WATERHOUSE D1 (PP)
 DAYS ROBIN HOOD H38 (AI) (ET) (PP)
 ALLEDALE FANCY U5 (AI) (P)

OKAWA YOUTH U93 (P)
 OKAWA COMMODORE 020076 (IMP NZL) (P)
 OKAWA BELLA U29 (P)

SIRE - ALLEDALE CHISEL L3 (ET) (PP)
 SOUTH BUKALONG SHANNON 40 (PP)
 ALLEDALE CORA D47 (AI) (P)
 ALLEDALE CORA B7 (AI) (P)

DAM - ALLEDALE CORA C14 (AI) (P)
 WALLAN CREEK POWER SURGE S044 (AI) (H)
 MOORLANDS CORA W063 (H)
 MOORLANDS CORA S137 (H)

DECEMBER 2019 GROUP BREEDPLAN EBVS							
CE DIR	CE DTRS	GL	BWT	200W	400W	600W	MCW
+4.9	+3.5	-3.8	+3.8	+39	+63	+86	+79
47%	39%	57%	74%	69%	68%	71%	63%
MILK	SS	CWT	EMA	RIB	RUMP	RBV%	IMF%
+15	+2.8	+64	+4.7	+0.7	+1.6	+1.5	-0.1
54%	75%	59%	51%	55%	59%	53%	54%

\$ INDEX VALUE	
SSR	+\$164
NSR	+\$159
SBM	+\$167
NBT	+\$122

Deep, strong headed bull. A half brother by Waterhouse was used successfully in our stud.

PURCHASER:..... \$.....

Lot 64 - ALLEDALE GALILEO P152 (PP)

P152

BIRTH DATE - 09/06/2018

POLL STATUS - HOMOZYGOUS

PIGMENT - 100/100

ALLEDALE WATERHOUSE D1 (PP)
 DAYS ROBIN HOOD H38 (AI) (ET) (PP)
 ALLEDALE FANCY U5 (AI) (P)

KOANUI ROCKET 0219 (IMP NZL) (P)
 MORGANVALE FEVOLA (AI) (P)
 MORGANVALE STATUESQUE C215 (P)

SIRE - ALLEDALE CHISEL L3 (ET) (PP)
 SOUTH BUKALONG SHANNON 40 (PP)
 ALLEDALE CORA D47 (AI) (P)
 ALLEDALE CORA B7 (AI) (P)

DAM - ALLEDALE FANCY H32 (PP)
 TYCOLAH GOLD RUSH (S)
 ALLEDALE FANCY F82 (AI) (P)
 ALLEDALE FANCY Z260 (P)

DECEMBER 2019 GROUP BREEDPLAN EBVS							
CE DIR	CE DTRS	GL	BWT	200W	400W	600W	MCW
+7.5	+6.2	-3.5	+1.7	+31	+51	+72	+60
43%	34%	54%	74%	68%	68%	72%	63%
MILK	SS	CWT	EMA	RIB	RUMP	RBV%	IMF%
+15	+2.3	+55	+4.8	+1.9	+3.6	+0.1	+1.1
49%	77%	59%	50%	55%	59%	52%	53%

\$ INDEX VALUE	
SSR	+\$156
NSR	+\$156
SBM	+\$167
NBT	+\$122

A correct, good bodied, smooth bull. Like his 1/2 brother Galileo M112, P152 is also very suitable for heifers. Galileo M112, has 4 good sons in this sale

PURCHASER:..... \$.....

EBV in **Top 10%** EBV in **Top 20%**

Acc. ALLENDALE

Lot 65 - ALLENDALE IMMORTAL P198 (PP)

P198

BIRTH DATE - 21/07/2018

POLL STATUS - HOMOZYGOUS

PIGMENT - 100/100

ALLENDALE YALLAROI 2 (AI) (TW) (PP)
 ALLENDALE CHISEL G161 (P)
 ALLENDALE CORA D47 (AI) (P)

SHF WONDER M326 W18 ET (P)
 REMITALL-WEST GAME DAY ET 74Y (IMP CAN) (P)
 REMITALL MARVEL 78T (IMP CAN) (P)

SIRE - ALLENDALE ANZAC M009 (ET) (PP)

DAM - ALLENDALE DAISY K63 (AI) (P)

ALLENDALE NATIONAL W168 (PP)
 ALLENDALE DAWN B22 (AI) (ET) (P)
 ALLENDALE DAWN T60 (AI) (P)

ALLENDALE WATERLOO B50 (AI) (P)
 ALLENDALE DAISY D48 (AI) (P)
 ALLENDALE DAISY Z80 (TW) (P)

DECEMBER 2019 GROUP BREEDPLAN EBVS							
CE DIR	CE DTRS	GL	BWT	200W	400W	600W	MCW
+4.4	+4.2	+0.6	+1.3	+30	+55	+61	+59
43%	34%	59%	73%	66%	66%	70%	62%
MILK	SS	CWT	EMA	RIB	RUMP	RBV%	IMF%
+11	+3.5	+50	+5.0	+1.0	+1.4	+0.3	+0.7
47%	74%	56%	47%	52%	56%	50%	50%

\$ INDEX VALUE	
SSR	+\$123
NSR	+\$124
SBM	+\$128
NBT	+\$98

Young, attractive bull suitable for heifers. A son of K63 sold for \$16,000 to Peter Young at last years sale.

PURCHASER:..... \$.....

Lot 66 - ALLENDALE JOKER P104 (AI) (PP)

P104

BIRTH DATE - 17/05/2018

POLL STATUS - HOMOZYGOUS

PIGMENT - 80/100

ALLENDALE SUPERSTAR B28 (AI) (ET) (S)
 ALLENDALE YALLAROI 2 (AI) (TW) (PP)
 ALLENDALE FANCY A181 (AI) (P)

ALLENDALE ANZAC E114 (PP)
 ALLENDALE CHINCHILLA J23 (AI) (PP)
 ALLENDALE FANCY B115 (P)

SIRE - ALLENDALE FCF BARKLY H127 (P)

DAM - ALLENDALE FANCY L140 (TW) (P)

OKAWA COMMODORE 020076 (IMP NZL) (P)
 ALLENDALE FANCY C210 (AI) (P)
 ALLENDALE FANCY Y98 (P)

ALLENDALE WASHINGTON D57 (AI) (P)
 ALLENDALE FANCY G83 (ET) (P)
 ALLENDALE FANCY Y19 (AI) (P)

DECEMBER 2019 GROUP BREEDPLAN EBVS							
CE DIR	CE DTRS	GL	BWT	200W	400W	600W	MCW
+0.4	+1.9	+1.5	+3.0	+35	+55	+62	+49
44%	35%	74%	74%	69%	69%	72%	64%
MILK	SS	CWT	EMA	RIB	RUMP	RBV%	IMF%
+12	+1.8	+47	+4.7	+1.4	+2.0	+0.5	+0.5
50%	78%	59%	51%	54%	59%	52%	53%

\$ INDEX VALUE	
SSR	+\$119
NSR	+\$118
SBM	+\$114
NBT	+\$81

A long bodied bull sired by Barkly who has bred tremendously well for Ian Durkin at Mountain Valley, Coolatai

PURCHASER:..... \$.....

EBV in **Top 10%**

EBV in **Top 20%**

Acc. DAYS WHITEFACE

Lot 67 - DAYS HEMISPHERE P156 (AI) (ET) (PP)

P156

BIRTH DATE - 31/05/2018

POLL STATUS - HOMOZYGOUS

PIGMENT - 100/100

ALLENDALE YACKA (AI) (P)
 ALLENDALE ANZAC E114 (PP)
 ALLENDALE DAWN B22 (AI) (ET) (P)

ALLENDALE VAGABOND A74 (AI) (P)
 ALLENDALE WATERHOUSE D1 (PP)
 ALLENDALE MARLINE X185 (P)

SIRE - INJEMIRA ANZAC H006 (PP)

DAM - DAYS CORA J92 (P)

PINE HILL ERIK Y601 (AI) (S)
 INJEMIRA MARINDA B028 (AI) (P)
 INJEMIRA MARINDA Y065 (H)

ALLENDALE TIPPERARY D13 (AI) (ET) (P)
 DAYS CORA F76 (P)
 ALLENDALE CORA D26 (AI) (P)

DECEMBER 2019 GROUP BREEDPLAN EBVS							
CE DIR	CE DTRS	GL	BWT	200W	400W	600W	MCW
+2.2	+4.0	-1.4	+3.9	+40	+70	+92	+80
49%	41%	63%	70%	68%	67%	68%	63%
MILK	SS	CWT	EMA	RIB	RUMP	RBV%	IMF%
+19	+3.4	+65	+4.3	+1.5	+2.1	+0.6	+0.6
59%	66%	59%	51%	56%	60%	54%	59%

\$ INDEX VALUE	
SSR	+\$165
NSR	+\$155
SBM	+\$165
NBT	+\$119

Deep bodied, smooth skinned bull who is a full brother to Lot's 32 and 33. Cora J92 has had sons sell to \$22,000.

PURCHASER: \$.....



LOT 67

EBV in Top 10%

EBV in Top 20%

R J C E V A N S
— & Co —

Accountants • Tax Agents • Advisors

Avoid future storms

- Budgeting – Cash Flow & Management
- Family Farm Succession & Protection
- Family Farm Reconstruction
- Estate Planning guidance
- Taxation services
- SMSF Administration & Advice
- Financial Planning

Call to make an appointment
(08) 8272 2500 today.

 Follow us on Facebook for updates
on when or where we are visiting

 Visit rjcevans.com.au
to sign up for our
monthly and quarterly
newsletters

RJC Evans & Co Pty Ltd
116 Greenhill Road, UNLEY SA 5061
ABN 40 007 804 220
T: (08) 8272 2500 F: (08) 8271 1853
E: rjcevans@rjcevans.com.au
W: www.rjcevans.com.au

VR4342448

Servicing the rural community since 1921



Acc. DAYS WHITEFACE

Lot 68 - DAYS DEMONSTRATOR P179 (AI) (ET) (PP)

P179

BIRTH DATE - 04/06/2018

POLL STATUS - HOMOZYGOUS

PIGMENT - 100/100

QUAMBY PLAINS STOCKMASTER Y118 (P)

DEBARRY EDEN (PP)

WIRRUNA FLETCHER F214 (P)

ALLEDALE TIPPERARY D13 (AI) (ET) (P)

WIRRUNA LAST DAY B16 (AI) (H#)

ALLEDALE FANCY U64 (AI) (P)

SIRE - WIRRUNA KATNOOK K74 (AI) (P)

DAM - DAYS CORA F76 (P)

WIRRUNA DAFFY D1 (P)

OKAWA COMMODORE 020076 (IMP NZL) (P)

WIRRUNA VICTORIA G7 (AI) (P)

ALLEDALE CORA D26 (AI) (P)

WIRRUNA VICTORIA E112 (AI) (ET) (P)

ALLEDALE A1 (P)

DECEMBER 2019 GROUP BREEDPLAN EBVS							
CE DIR	CE DTRS	GL	BWT	200W	400W	600W	MCW
+2.6	+1.3	-2.3	+5.0	+38	+57	+80	+59
49%	38%	65%	71%	68%	69%	70%	64%
MILK	SS	CWT	EMA	RIB	RUMP	RBV%	IMF%
+19	+3.6	+52	+5.5	+0.6	+0.3	+1.3	+1.7
57%	73%	63%	54%	60%	63%	54%	61%

\$ INDEX VALUE	
SSR	+\$159
NSR	+\$145
SBM	+\$157
NBT	+\$115

Long level topped bull in the top 5% of the breed for IMF. Full brother to Lot 31. 3 sons of Cora F76 have averaged \$11,500 including a Dubbo performance class winner.

PURCHASER: \$.....



LOT 68

EBV in Top 10%

EBV in Top 20%

Acc. DAYS WHITEFACE

Lot 69 - DAYS HALLMARK P180 (AI) (ET) (PP)

P180

BIRTH DATE - 04/06/2018

POLL STATUS - HOMOZYGOUS

PIGMENT - 100/100

ALLENDALE ANZAC E114 (PP)
ALLENDALE CHINCHILLA J23 (AI) (PP)
ALLENDALE FANCY B115 (P)

SOUTH BUKALONG WALKER 6 (AI) (P)
SOUTH BUKALONG WALLACE 2 (P)
SOUTH BUKALONG VICTORIA 152 (P)

SIRE - ALLENDALE GAMBLER L143 (P)

DAM - DUNOON UNA H510 (AI) (P)

ALLENDALE WALHOLLOW D149 (AI) (P)
ALLENDALE LAST DAY F57 (PP)
ALLENDALE LAST DAY D45 (AI) (P)

ALLENDALE NATIONAL W168 (PP)
DUNOON UNA D532 (AI) (P)
DUNOON UNA Y160 (H)

DECEMBER 2019 GROUP BREEDPLAN EBVS							
CE DIR	CE DTRS	GL	BWT	200W	400W	600W	MCW
+1.4	+2.4	+0.5	+7.1	+44	+70	+102	+72
45%	35%	64%	72%	66%	65%	66%	59%
MILK	SS	CWT	EMA	RIB	RUMP	RBV%	IMF%
+18	+3.0	+64	+4.3	+1.8	+2.6	+0.1	+1.9
52%	65%	57%	49%	54%	57%	51%	55%

\$ INDEX VALUE	
SSR	+\$189
NSR	+\$170
SBM	+\$185
NBT	+\$129

Big, well balanced bull with top 1% IMF. Full brother to Lot 2.

PURCHASER:..... \$.....

Lot 70 - DAYS JIGSAW P195 (PP)

P195

BIRTH DATE - 08/06/2018

POLL STATUS - HOMOZYGOUS

PIGMENT - 100/100

TH 71U 719T MR HEREFORD 11X (IMP USA) (P)
DAYS WIZARD J204 (AI) (ET) (S)
ALLENDALE DAWN Z21 (AI) (P)

TH 70R 11X MR HEREFORD 34Z (IMP USA) (P)
DAYS FAHRENHEIT K103 (AI) (PP)
DAYS MARSHALL LASS H133 (PP)

SIRE - DAYS HORIZON M028 (AI) (PP)

DAM - DAYS FANCY M023 (P)

DAYS ROBIN HOOD H38 (AI) (ET) (PP)
DAYS FANCY K26 (AI) (P)
DAYS FANCY H31 (AI) (ET) (P)

DAYS BRAVADO F152 (P)
DAYS FANCY H213 (P)
ALLENDALE FANCY B192 (P)

DECEMBER 2019 GROUP BREEDPLAN EBVS							
CE DIR	CE DTRS	GL	BWT	200W	400W	600W	MCW
+2.0	+1.5	-2.5	+4.7	+41	+63	+89	+73
36%	27%	53%	71%	65%	66%	69%	60%
MILK	SS	CWT	EMA	RIB	RUMP	RBV%	IMF%
+22	+3.4	+61	+6.0	+0.7	+1.4	+1.5	+0.9
41%	76%	55%	46%	51%	55%	48%	49%

\$ INDEX VALUE	
SSR	+\$155
NSR	+\$144
SBM	+\$160
NBT	+\$120

Long good headed heifers first calf.

PURCHASER:..... \$.....

EBV in **Top 10%**

EBV in **Top 20%**

Acc. DAYS WHITEFACE

Lot 71 - DAYS JUGGLER P114 (AI) (PP)

P114

BIRTH DATE - 23/05/2018

POLL STATUS - HOMOZYGOUS

PIGMENT - 100/100

ALLENDALE VAGABOND A74 (AI) (P)
 ALLENDALE WATERHOUSE D1 (PP)
 ALLENDALE MARLINE X185 (P)

ALLENDALE NATIONAL W168 (PP)
 PINE HILL ENERGISE E604 (AI) (P)
 PINE HILL SIRIKIT B705 (P)

SIRE - DAYS EXECUTIVE K168 (PP)

DAM - DAYS DAWN J151 (P)

ALLENDALE TIPPERARY D13 (AI) (ET) (P)
 DAYS SILVIA G13 (AI) (P)
 DAYS SILVIA E30 (AI) (P)

ALLENDALE TIPPERARY D13 (AI) (ET) (P)
 DAYS DAWN F120 (P)
 ALLENDALE DAWN D114 (P)

DECEMBER 2019 GROUP BREEDPLAN EBVS							
CE DIR	CE DTRS	GL	BWT	200W	400W	600W	MCW
-2.8	+0.9	-1.7	+6.4	+41	+65	+90	+77
46%	38%	76%	75%	69%	69%	71%	65%
MILK	SS	CWT	EMA	RIB	RUMP	RBV%	IMF%
+17	+3.3	+52	+4.4	+0.4	+0.4	+0.4	+1.5
51%	75%	59%	51%	56%	60%	54%	57%

\$ INDEX VALUE	
SSR	+\$139
NSR	+\$120
SBM	+\$131
NBT	+\$95

Long correct Executive son with top 5% IMF.

PURCHASER:..... \$.....

Lot 72 - DAYS EXCEPTIONAL P123 (AI) (PP)

P123

BIRTH DATE - 24/05/2018

POLL STATUS - HOMOZYGOUS

PIGMENT - 100/100

ALLENDALE ANZAC E114 (PP)
 ALLENDALE CHINCHILLA J23 (AI) (PP)
 ALLENDALE FANCY B115 (P)

OKAWA YOUTH U93 (P)
 OKAWA COMMODORE 020076 (IMP NZL) (P)
 OKAWA BELLA U29 (P)

SIRE - ALLENDALE GAMBLER L143 (P)

DAM - ALLENDALE CORA D26 (AI) (P)

ALLENDALE WALHOLLOW D149 (AI) (P)
 ALLENDALE LAST DAY F57 (PP)
 ALLENDALE LAST DAY D45 (AI) (P)

ALLENDALE KINGSWOOD 6 (P)
 ALLENDALE A1 (P)
 ALLENDALE CORA X59 (P)

DECEMBER 2019 GROUP BREEDPLAN EBVS							
CE DIR	CE DTRS	GL	BWT	200W	400W	600W	MCW
+3.1	+1.1	+1.1	+4.2	+33	+50	+70	+52
46%	36%	76%	74%	69%	68%	70%	62%
MILK	SS	CWT	EMA	RIB	RUMP	RBV%	IMF%
+14	+2.7	+46	+3.7	+1.1	+1.5	+0.5	+0.3
53%	75%	58%	49%	54%	58%	52%	54%

\$ INDEX VALUE	
SSR	+\$133
NSR	+\$123
SBM	+\$132
NBT	+\$93

Correct, well balanced good hind quartered bull. Cora D26 has had sons sell to \$16,000 at Dubbo.

PURCHASER:..... \$.....

EBV in **Top 10%** EBV in **Top 20%**

Acc. DAYS WHITEFACE

Lot 73 - DAYS JINDABYNE P200 (S)

P200

BIRTH DATE - 09/06/2018

POLL STATUS - SCURRED

PIGMENT - 100/100

TH 71U 719T MR HEREFORD 11X (IMP USA) (P)
 TH 70R 11X MR HEREFORD 34Z (IMP USA) (P)
 TH 172J 57G QUEEN MAKER 70R (P)

SOUTH BUKALONG WALLACE 2 (P)
 DAYS PATRICK H37 (AI) (ET) (S)
 ALLENDALE FANCY A7 (AI) (ET) (P)

SIRE - DAYS BENEDICT M099 (AI) (PP)

DAM - DAYS HARMONY L22 (AI) (P)

MARKOWEN INTRUDER (PP)
 ALLENDALE MISS REGAL D138 (TW) (P)
 SILVERTON MISS REGAL W044 (H)

ALLENDALE UNRIVALLED (TW) (P)
 DAYS HARMONY J22 (AI) (ET) (P)
 ALLENDALE HARMONY S37 (P)

DECEMBER 2019 GROUP BREEDPLAN EBVS							
CE DIR	CE DTRS	GL	BWT	200W	400W	600W	MCW
-4.3	-0.1	-1.0	+7.9	+48	+74	+109	+79
39%	31%	55%	71%	65%	66%	69%	61%
MILK	SS	CWT	EMA	RIB	RUMP	RBV%	IMF%
+19	+2.3	+68	+4.3	+0.9	+1.3	+0.5	+1.1
44%	75%	55%	47%	52%	56%	49%	48%

\$ INDEX VALUE	
SSR	+\$164
NSR	+\$139
SBM	+\$155
NBT	+\$104

Long larger framed H38 son with high growth figures.

PURCHASER:..... \$.....

Lot 74 - DAYS P204 (S)

P204

BIRTH DATE - 11/06/2018

POLL STATUS - SCURRED

PIGMENT - 100/100

ALLENDALE VAGABOND A74 (AI) (P)
 ALLENDALE WATERHOUSE D1 (PP)
 ALLENDALE MARLINE X185 (P)

TH 71U 719T MR HEREFORD 11X (IMP USA) (P)
 TH 70R 11X MR HEREFORD 34Z (IMP USA) (P)
 TH 172J 57G QUEEN MAKER 70R (P)

SIRE - DAYS ROBIN HOOD H38 (AI) (ET) (PP)

DAM - DAYS MISS REGAL L42 (AI) (P)

ALLENDALE KENWORTH 2 (P)
 ALLENDALE FANCY U5 (AI) (P)
 ALLENDALE FANCY 248 (AI) (P)

PINE HILL ENERGISE E604 (AI) (P)
 DAYS MISS REGAL J99 (TW) (P)
 ALLENDALE MISS REGAL D138 (TW) (P)

DECEMBER 2019 GROUP BREEDPLAN EBVS							
CE DIR	CE DTRS	GL	BWT	200W	400W	600W	MCW
-7.1	-0.2	-1.3	+7.3	+47	+73	+102	+89
52%	44%	65%	74%	69%	70%	73%	67%
MILK	SS	CWT	EMA	RIB	RUMP	RBV%	IMF%
+17	+4.1	+63	+5.9	+0.0	+0.9	+1.6	+0.2
57%	77%	63%	56%	59%	63%	56%	60%

\$ INDEX VALUE	
SSR	+\$144
NSR	+\$130
SBM	+\$127
NBT	+\$87

Big, long bull with plenty of growth including top 1% for 200 day wt.

PURCHASER:..... \$.....

EBV in **Top 10%**

EBV in **Top 20%**

Acc. ALLENDALE

Lot 75 - ALLENDALE JAMAICA P044 (AI) (PP)

P044

BIRTH DATE - 20/04/2018

POLL STATUS - HOMOZYGOUS

PIGMENT - 100/100

ALLENDALE WATERHOUSE D1 (PP)
 DAYS ROBIN HOOD H38 (AI) (ET) (PP)
 ALLENDALE FANCY U5 (AI) (P)

ALLENDALE ANZAC E114 (PP)
 ALLENDALE COLLINGWOOD J29 (AI) (PP)
 ALLENDALE BLUE MIST E13 (P)

SIRE - ALLENDALE CHISEL L1 (ET) (PP)
 SOUTH BUKALONG SHANNON 40 (PP)
 ALLENDALE CORA D47 (AI) (P)
 ALLENDALE CORA B7 (AI) (P)

DAM - ALLENDALE FANCY M114 (P)
 ALLENDALE CAULFIELD G146 (P)
 ALLENDALE FANCY J10 (P)
 ALLENDALE FANCY G21 (AI) (P)

DECEMBER 2019 GROUP BREEDPLAN EBVS							
CE DIR	CE DTRS	GL	BWT	200W	400W	600W	MCW
-3.0	+0.4	-0.7	+5.4	+40	+60	+82	+64
43%	32%	71%	72%	66%	67%	70%	63%
MILK	SS	CWT	EMA	RIB	RUMP	RBV%	IMF%
+16	+3.1	+54	+5.5	+1.7	+3.3	-0.1	+1.4
45%	76%	57%	48%	53%	57%	50%	51%

\$ INDEX VALUE	
SSR	+\$140
NSR	+\$132
SBM	+\$127
NBT	+\$89

A long, muscular, high yielding heifers first calf.

PURCHASER:..... \$.....

Lot 76 - ALLENDALE IMAGE P098 (AI) (P)

P098

BIRTH DATE - 14/05/2018

POLL STATUS - POLLED

PIGMENT - 100/100

SHF WONDER M326 W18 ET (P)
 REMITALL-WEST GAME DAY ET 74Y (IMP CAN) (P)
 REMITALL MARVEL 78T (IMP CAN) (P)

ALLENDALE WATERHOUSE D1 (PP)
 DAYS ROBIN HOOD H38 (AI) (ET) (PP)
 ALLENDALE FANCY U5 (AI) (P)

SIRE - ALLENDALE DICKSON L13 (ET) (PP)
 ALLENDALE WALHOLLOW D149 (AI) (P)
 ALLENDALE FANCY F70 (PP)
 ALLENDALE FANCY D156 (P)

DAM - ALLENDALE DAISY L79 (AI) (P)
 ALLENDALE WASHINGTON D57 (AI) (P)
 ALLENDALE DAISY H30 (AI) (P)
 ALLENDALE DAISY C256 (P)

DECEMBER 2019 GROUP BREEDPLAN EBVS							
CE DIR	CE DTRS	GL	BWT	200W	400W	600W	MCW
-2.2	+4.5	-0.3	+4.5	+36	+58	+81	+63
38%	31%	72%	70%	64%	65%	69%	61%
MILK	SS	CWT	EMA	RIB	RUMP	RBV%	IMF%
+18	+1.7	+57	+6.7	+2.0	+3.2	+1.1	+1.2
44%	76%	55%	47%	51%	55%	48%	47%

\$ INDEX VALUE	
SSR	+\$149
NSR	+\$143
SBM	+\$141
NBT	+\$97

A muscular, strong topped bull backed up by excellent carcass EBVs

PURCHASER:..... \$.....

EBV in Top 10% EBV in Top 20%

TATIARA ARTIFICIAL BREEDING SERVICES

Box 595, Bordertown S.A. 5268
Phone: 08 8752 1578 • Fax: 08 8752 2970
Email: tabs@lm.net.au



- Semen collection and freezing
- Semen storage
- Artificial insemination



- Semen collection and freezing
- Semen storage
- Laparoscopic insemination
- Embryo transfer

Proprietors: KG & JM Watson

Acc. ALLEDALE

Lot 77 - ALLEDALE JAMESTOWN P031 (AI) (PP)

P031

BIRTH DATE - 16/04/2018

POLL STATUS - HOMOZYGOUS

PIGMENT - 70/75

SOUTH BUKALONG WALKER 6 (AI) (P)
 SOUTH BUKALONG WALLACE 2 (P)
 SOUTH BUKALONG VICTORIA 152 (P)

ALLEDALE NATIONAL W168 (PP)
 ALLEDALE WASHINGTON K5 (ET) (PP)
 ALLEDALE FANCY Z59 (P)

SIRE - GLENTREVOR WALLACE H427 (AI) (PP)

DAM - ALLEDALE MARLINE M064 (AI) (P)

GLENTREVOR ROCKET D016 (AI) (P)
 GLENTREVOR MARITANA F240 (P)
 GLENTREVOR MARITANA C925 (AI) (P)

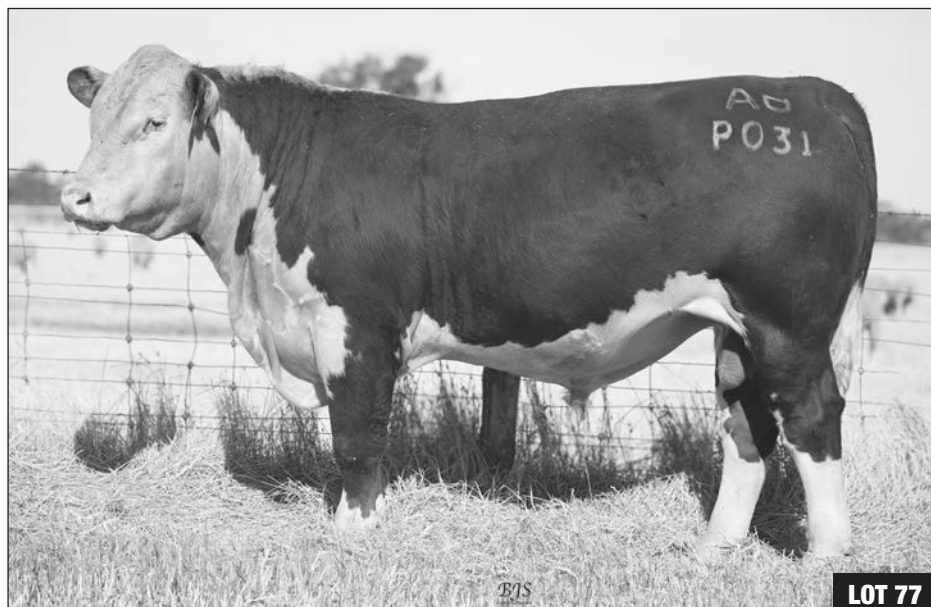
ALLEDALE YALLAROI 2 (AI) (TW) (PP)
 ALLEDALE MARLINE H15 (AI) (P)
 ALLEDALE MARLINE E49 (P)

DECEMBER 2019 GROUP BREEDPLAN EBVS							
CE DIR	CE DTRS	GL	BWT	200W	400W	600W	MCW
+8.1	+6.8	-5.2	+2.9	+39	+66	+86	+62
49%	40%	76%	73%	69%	69%	72%	65%
MILK	SS	CWT	EMA	RIB	RUMP	RBV%	IMF%
+13	+2.7	+65	+4.3	+1.0	+1.5	+0.8	+1.1
54%	77%	60%	52%	56%	60%	54%	56%

\$ INDEX VALUE	
SSR	+\$183
NSR	+\$178
SBM	+\$197
NBT	+\$141

A heifers first calf with a strong muscle pattern and tidy figures. Could be used on heifers.

PURCHASER: \$.....



LOT 77

EBV in Top 10%

EBV in Top 20%

Acc. ALLENDALE

Lot 78 - ALLENDALE JI FAIRFAX P139 (AI) (P)

P139

BIRTH DATE - 02/06/2018

POLL STATUS - POLLED

PIGMENT - 100/100

SHF WONDER M326 W18 ET (P)
 REMITALL-WEST GAME DAY ET 74Y (IMP CAN) (P)
 REMITALL MARVEL 78T (IMP CAN) (P)

EBBX CALGARY (AI) (ET) (P)
 DEBARRY CALGARY C58 (P)
 DEBARRY DALLAS X75 (AI) (P)

SIRE - ALLENDALE CHISEL L8 (ET) (S)

DAM - ABBERLEY KATE 2 (P)

SOUTH BUKALONG SHANNON 40 (PP)
 ALLENDALE CORA D47 (AI) (P)
 ALLENDALE CORA B7 (AI) (P)

ALLENDALE ROSEMOUNT 2 (AI) (P)
 ABBERLEY KATE B1 (AI) (P)
 ABBERLEY KATE (AI) (P)

DECEMBER 2019 GROUP BREEDPLAN EBVS							
CE DIR	CE DTRS	GL	BWT	200W	400W	600W	MCW
+0.7	+0.4	-1.9	+3.8	+33	+52	+69	+63
42%	34%	72%	73%	67%	68%	71%	63%
MILK	SS	CWT	EMA	RIB	RUMP	RBV%	IMF%
+14	+2.7	+42	+2.4	+0.3	+0.2	+0.5	+0.4
48%	76%	57%	48%	53%	57%	51%	51%

\$ INDEX VALUE	
SSR	+\$110
NSR	+\$97
SBM	+\$109
NBT	+\$81

Soft bull suitable to use on heifers

PURCHASER:..... \$.....

Lot 79 - ALLENDALE JUSTICE P057 (AI) (PP)

P057

BIRTH DATE - 02/05/2018

POLL STATUS - HOMOZYGOUS

PIGMENT - 100/100

ALLENDALE KING KONG 2 (S)
 ALLENDALE NATIONAL W168 (PP)
 ALLENDALE CORA R22 (P)

DEBARRY CALGARY C58 (P)
 ALLENDALE ANZAC H182 (ET) (PP)
 ALLENDALE DAWN B22 (AI) (ET) (P)

SIRE - ALLENDALE WASHINGTON K5 (ET) (PP)

DAM - ALLENDALE FCF FANCY L19 (AI) (P)

ALLENDALE OVERTON (P)
 ALLENDALE FANCY Z59 (P)
 ALLENDALE FANCY V35 (P)

ALLENDALE WASHINGTON G82 (ET) (P)
 ALLENDALE FCF FANCY J80 (TW) (P)
 ALLENDALE FANCY D207 (AI) (P)

DECEMBER 2019 GROUP BREEDPLAN EBVS							
CE DIR	CE DTRS	GL	BWT	200W	400W	600W	MCW
-0.8	-0.5	-4.0	+5.2	+33	+54	+67	+88
45%	39%	76%	74%	69%	70%	73%	66%
MILK	SS	CWT	EMA	RIB	RUMP	RBV%	IMF%
+17	+1.9	+43	+4.6	+1.2	+1.9	-0.1	+0.9
51%	78%	60%	52%	56%	60%	54%	56%

\$ INDEX VALUE	
SSR	+\$78
NSR	+\$71
SBM	+\$82
NBT	+\$76

A long, correct bull

PURCHASER:..... \$.....

EBV in **Top 10%**

EBV in **Top 20%**

Acc. ALLENDALE

Lot 80 - ALLENDALE JAKARTA P096 (AI) (PP)

P096

BIRTH DATE - 14/05/2018

POLL STATUS - HOMOZYGOUS

PIGMENT - 95/95

SHF WONDER M326 W18 ET (P)
 REMITALL-WEST GAME DAY ET 74Y (IMP CAN) (P)
 REMITALL MARVEL 78T (IMP CAN) (P)

HARVIE TAILOR MADE ET 7W (IMP CAN) (AI) (P)
 ALLENDALE ANZAC H172 (ET) (P)
 ALLENDALE DAWN B22 (AI) (ET) (P)

SIRE - ALLENDALE CHISEL L8 (ET) (S)

DAM - ALLENDALE FANCY K196 (P)

SOUTH BUKALONG SHANNON 40 (PP)
 ALLENDALE CORA D47 (AI) (P)
 ALLENDALE CORA B7 (AI) (P)

ALLENDALE WATERHOUSE D1 (PP)
 ALLENDALE FANCY G123 (AI) (P)
 ALLENDALE FANCY Z247 (P)

DECEMBER 2019 GROUP BREEDPLAN EBVS							
CE DIR	CE DTRS	GL	BWT	200W	400W	600W	MCW
+0.8	+4.1	-0.9	+4.3	+42	+71	+94	+93
40%	31%	71%	72%	66%	67%	70%	62%
MILK	SS	CWT	EMA	RIB	RUMP	RBV%	IMF%
+20	+3.0	+63	+3.1	+0.3	+0.5	+0.7	+0.0
45%	75%	56%	47%	52%	56%	49%	49%

\$ INDEX VALUE	
SSR	+\$141
NSR	+\$127
SBM	+\$145
NBT	+\$108

Correct, easy doing, long bodied bull

PURCHASER:..... \$.....

Lot 81 - ALLENDALE JOE BLOW P161 (PP)

P161

BIRTH DATE - 12/06/2018

POLL STATUS - HOMOZYGOUS

PIGMENT - 100/100

ALLENDALE YALLAROI 2 (AI) (TW) (PP)
 ALLENDALE CHISEL G161 (P)
 ALLENDALE CORA D47 (AI) (P)

HARVIE TRAVELER 69T (IMP CAN) (P)
 HARVIE TAILOR MADE ET 7W (IMP CAN) (AI) (P)
 HARVIE MISS FIREFLY 51F (IMP CAN) (P)

SIRE - ALLENDALE ANZAC M009 (ET) (PP)

DAM - ALLENDALE FANCY K7 (ET) (P)

ALLENDALE NATIONAL W168 (PP)
 ALLENDALE DAWN B22 (AI) (ET) (P)
 ALLENDALE DAWN T60 (AI) (P)

ALLENDALE OVERTON (P)
 ALLENDALE FANCY Z59 (P)
 ALLENDALE FANCY V35 (P)

DECEMBER 2019 GROUP BREEDPLAN EBVS							
CE DIR	CE DTRS	GL	BWT	200W	400W	600W	MCW
+0.5	+0.8	-1.6	+4.9	+39	+57	+72	+85
44%	35%	55%	73%	67%	66%	70%	62%
MILK	SS	CWT	EMA	RIB	RUMP	RBV%	IMF%
+11	+4.3	+46	+2.7	+1.1	+1.5	-0.9	+1.1
48%	75%	56%	48%	52%	56%	50%	50%

\$ INDEX VALUE	
SSR	+\$101
NSR	+\$93
SBM	+\$99
NBT	+\$83

Correct, easing doing bull. Excellent pedigree with grand dams B22 and Z59

PURCHASER:..... \$.....

EBV in **Top 10%** EBV in **Top 20%**

Acc. ALLENDALE

Lot 82 - ALLENDALE FRONT RUNNER P197 (P)

P197

BIRTH DATE - 18/07/2018

POLL STATUS - POLLED

PIGMENT - 100/100

PINE HILL GOLIATH A615 (AI) (S)
YALGOO BERETTA F069 (P)
YALGOO BEAUTY Z183 (P)

HARVIE TRAVELER 69T (IMP CAN) (P)
HARVIE TAILOR MADE ET 7W (IMP CAN) (AI) (P)
HARVIE MISS FIREFLY 51F (IMP CAN) (P)

SIRE - WRATTENBULLIE LANGFORD (PP)

DAM - ALLENDALE MARLINE H1 (AI) (PP)

CASCADE EL DORADO E27 (P)
WRATTENBULLIE ZEITA J23 (AI) (ET) (P)
WRATTENBULLIE ZEITAF31 (P)

ALLENDALE WASHINGTON C77 (AI) (PP)
ALLENDALE MARLINE E60 (P)
ALLENDALE MARLINE B36 (AI) (P)

DECEMBER 2019 GROUP BREEDPLAN EBVS							
CE DIR	CE DTRS	GL	BWT	200W	400W	600W	MCW
+4.2	-1.6	-1.6	+3.1	+29	+50	+73	+69
38%	29%	49%	71%	65%	65%	68%	60%
MILK	SS	CWT	EMA	RIB	RUMP	RBV%	IMF%
+14	+3.2	+51	+4.2	+0.9	+1.5	+0.8	+0.1
47%	73%	54%	44%	50%	54%	47%	46%

\$ INDEX VALUE	
SSR	+\$124
NSR	+\$116
SBM	+\$129
NBT	+\$101

Correct, good skinned bull. Dam is a very good donor female.

PURCHASER:..... \$.....

Acc. DAYS WHITEFACE

Lot 83 - DAYS JUMBUCK P244 (PP)

P244

BIRTH DATE - 05/07/2018

POLL STATUS - HOMOZYGOUS

PIGMENT - 100/100

ALLENDALE WATERHOUSE D1 (PP)
DAYS CALIBRE G74 (PP)
ALLENDALE DAWN C62 (AI) (P)

ALLENDALE ROBIN HOOD D194 (PP)
DAYS BALTIMORE F82 (P)
ALLENDALE FANCY D165 (P)

SIRE - DAYS CAVALRY L57 (AI) (PP)

DAM - DAYS LYDIA L33 (AI) (P)

ALLENDALE TOP NOTCH Z52 (AI) (TW) (P)
ALLENDALE BLISSFUL B106 (P)
ALLENDALE BLISSFUL Z28 (AI) (P)

DAYS BLACKBERRY G82 (AI) (P)
DAYS LYDIA J116 (P)
DAYS LYDIA G94 (P)

DECEMBER 2019 GROUP BREEDPLAN EBVS							
CE DIR	CE DTRS	GL	BWT	200W	400W	600W	MCW
+1.7	+3.0	-2.9	+6.2	+42	+61	+88	+76
41%	32%	57%	72%	66%	66%	64%	59%
MILK	SS	CWT	EMA	RIB	RUMP	RBV%	IMF%
+20	+2.0	+55	+4.4	+0.3	+0.7	+0.5	+1.4
47%	76%	53%	47%	51%	55%	49%	49%

\$ INDEX VALUE	
SSR	+\$136
NSR	+\$119
SBM	+\$146
NBT	+\$111

Well balanced, good hind quartered bull in the top 5% for IMF.

PURCHASER:..... \$.....

EBV in **Top 10%**

EBV in **Top 20%**

Acc. DAYS WHITEFACE



LOT 83

Lot 84 - DAYS DERBY P272 (PP)

P272

BIRTH DATE - 27/07/2018

POLL STATUS - HOMOZYGOUS

PIGMENT - 100/100

TH 71U 719T MR HEREFORD 11X (IMP USA) (P)
 TH 70R 11X MR HEREFORD 34Z (IMP USA) (P)
 TH 172J 57G QUEEN MAKER 70R (P)

DEBARRY EDEN (PP)
 ALLENDALE TIPPERARY D13 (AI) (ET) (P)
 ALLENDALE FANCY U64 (AI) (P)

SIRE - DAYS BENEDICT M099 (AI) (PP)

DAM - DAYS DAWN F66 (P)

MARKOWEN INTRUDER (P)
 ALLENDALE MISS REGAL D138 (TW) (P)
 SILVERTON MISS REGAL W044 (H)

ALLENDALE NATIONAL W168 (PP)
 ALLENDALE DAWN D102 (AI) (P)
 ALLENDALE DAWN A245 (P)

DECEMBER 2019 GROUP BREEDPLAN EBVS

CE DIR	CE DTRS	GL	BWT	200W	400W	600W	MCW
-2.0	-3.4	+3.2	+6.4	+38	+67	+89	+65
41%	34%	52%	71%	65%	65%	64%	58%
MILK	SS	CWT	EMA	RIB	RUMP	RBV%	IMPF%
+17	+3.7	+56	+6.3	+1.0	+1.3	+1.8	+0.6
50%	75%	53%	48%	52%	56%	50%	49%

\$ INDEX VALUE

SSR	+\$154
NSR	+\$142
SBM	+\$143
NBT	+\$102

Youngest bull in the sale, a smooth bodied bull with EMA in the top 5%.

PURCHASER:..... \$.....

EBV in **Top 10%**

EBV in **Top 20%**

Acc. DAYS WHITEFACE

Lot 85 - DAYS INNKEEPER P187 (PP)

P187

BIRTH DATE - 06/06/2018

POLL STATUS - HOMOZYGOUS

PIGMENT - 100/100

ALLEDALE ANZAC E114 (PP)
 INJEMIRA ANZAC AI J188 (AI) (PP)
 INJEMIRA PATTIE D119 (P)

ALLEDALE WATERHOUSE D1 (PP)
 DAYS CALIBRE G74 (PP)
 ALLENDALE DAWN C62 (AI) (P)

SIRE - DAYS HEMISPHERE M065 (P)

DAM - DAYS FANCY L30 (AI) (P)

ALLEDALE WATERHOUSE D1 (PP)
 DAYS CORA J92 (P)
 DAYS CORA F76 (P)

WIRRUNA ABERCORN (AI) (P)
 DAYS FANCY E111 (P)
 ALLENDALE FANCY A230 (P)

DECEMBER 2019 GROUP BREEDPLAN EBVS							
CE DIR	CE DTRS	GL	BWT	200W	400W	600W	MCW
+5.1	+5.2	-2.4	+4.8	+34	+58	+85	+98
41%	33%	55%	73%	67%	68%	71%	63%
MILK	SS	CWT	EMA	RIB	RUMP	RBV%	IMF%
+13	+2.1	+58	+4.8	+0.7	+1.2	+0.5	+1.2
49%	76%	58%	50%	54%	58%	52%	54%

\$ INDEX VALUE	
SSR	+\$135
NSR	+\$126
SBM	+\$151
NBT	+\$121

Long smooth bodied bull.

PURCHASER:..... \$.....

Lot 86 - DAYS HOMESTEAD P157 (PP)

P157

BIRTH DATE - 31/05/2018

POLL STATUS - HOMOZYGOUS

PIGMENT - 100/100

MELVILLE EXCEL E443 (P)
 DAYS ELABORATE J59 (AI) (P)
 DAYS CORA E38 (AI) (P)

WIRRUNA DAFFY D1 (P)
 WIRRUNA GEELONG G171 (AI) (PP)
 WIRRUNA LAST DAY E163 (AI) (P)

SIRE - DAYS GALLIPOLI L142 (PP)

DAM - DAYS MISS REGAL K35 (AI) (P)

DAYS CALIBRE G74 (PP)
 DAYS FANCY J76 (AI) (P)
 DAYS FANCY F38 (AI) (P)

ALLEDALE WATERHOUSE D1 (PP)
 DAYS MISS REGAL G54 (P)
 ALLENDALE MISS REGAL D138 (TW) (P)

DECEMBER 2019 GROUP BREEDPLAN EBVS							
CE DIR	CE DTRS	GL	BWT	200W	400W	600W	MCW
+10.1	+6.5	-3.0	+1.1	+24	+38	+55	+44
44%	33%	64%	74%	67%	67%	69%	62%
MILK	SS	CWT	EMA	RIB	RUMP	RBV%	IMF%
+18	+3.3	+45	+5.1	+1.3	+2.1	+0.8	+1.0
46%	73%	56%	48%	52%	56%	50%	52%

\$ INDEX VALUE	
SSR	+\$134
NSR	+\$133
SBM	+\$153
NBT	+\$115

Heifer bull. Maternal brother M033 was used on heifers and sold to The Snuggery for \$18,000.

PURCHASER:..... \$.....

EBV in **Top 10%**

EBV in **Top 20%**

Acc. DAYS WHITEFACE

Lot 87 - DAYS INVESTIGATOR P192 (PP)

P192

BIRTH DATE - 07/06/2018

POLL STATUS - HOMOZYGOUS

PIGMENT - 100/100

MELVILLE EXCEL E443 (P)
 DAYS ELABORATE J59 (AI) (P)
 DAYS CORA E38 (AI) (P)

TH 71U 719T MR HEREFORD 11X (IMP USA) (P)
 TH 70R 11X MR HEREFORD 34Z (IMP USA) (P)
 TH 172J 57G QUEEN MAKER 70R (P)

SIRE - DAYS GALLIPOLI L142 (PP)

DAM - DAYS BANKSIA K310 (AI) (P)

DAYS CALIBRE G74 (P)
 DAYS FANCY J76 (AI) (P)
 DAYS FANCY F38 (AI) (P)

VALMA LANCELOT A61 (P)
 DAYS BANKSIA G330 (P)
 VALMA GOLDS BANKSIA A96 (P)

DECEMBER 2019 GROUP BREEDPLAN EBVS							
CE DIR	CE DTRS	GL	BWT	200W	400W	600W	MCW
+7.4	+2.7	-1.4	+2.3	+31	+51	+71	+52
42%	30%	62%	73%	68%	68%	70%	62%
MILK	SS	CWT	EMA	RIB	RUMP	RBV%	IMF%
+17	+3.6	+56	+4.8	+1.2	+1.4	+0.9	+1.1
42%	76%	57%	48%	52%	57%	50%	50%

\$ INDEX VALUE	
SSR	+\$155
NSR	+\$149
SBM	+\$164
NBT	+\$122

Long, well balanced bull suitable for heifers.

PURCHASER:..... \$.....

Lot 88 - DAYS GALLIPOLI P236 (PP)

P236

BIRTH DATE - 29/06/2018

POLL STATUS - HOMOZYGOUS

PIGMENT - 95/100

ALLENDALE ANZAC E114 (PP)
 INJEMIRA ANZAC AI J188 (AI) (PP)
 INJEMIRA PATTIE D119 (P)

ALLENDALE WATERHOUSE D1 (PP)
 DAYS CALIBRE G74 (PP)
 ALLENDALE DAWN C62 (AI) (P)

SIRE - DAYS HEMISPHERE M065 (P)

DAM - DAYS FANCY J76 (AI) (P)

ALLENDALE WATERHOUSE D1 (PP)
 DAYS CORA J92 (P)
 DAYS CORA F76 (P)

ALLENDALE WASHINGTON D57 (AI) (P)
 DAYS FANCY F38 (AI) (P)
 ALLENDALE FANCY C231 (P)

DECEMBER 2019 GROUP BREEDPLAN EBVS							
CE DIR	CE DTRS	GL	BWT	200W	400W	600W	MCW
+2.6	+4.6	-2.5	+3.0	+31	+43	+64	+61
43%	34%	57%	73%	68%	69%	71%	63%
MILK	SS	CWT	EMA	RIB	RUMP	RBV%	IMF%
+12	+0.9	+50	+5.2	+1.7	+2.6	+0.4	+1.0
51%	77%	59%	51%	55%	59%	53%	55%

\$ INDEX VALUE	
SSR	+\$117
NSR	+\$117
SBM	+\$123
NBT	+\$92

Soft, quality bull suitable for heifers who is a maternal brother to Gallipoli L142 used in the stud.

PURCHASER:..... \$.....

EBV in **Top 10%** EBV in **Top 20%**

Acc. DAYS WHITEFACE

Lot 89 - DAYS HALLMARK P228 (TW) (P)

P228

BIRTH DATE - 25/06/2018

POLL STATUS - HETEROZYGOUS

PIGMENT - 95/95

MELVILLE EXCEL E443 (P)
 DAYS ELABORATE J59 (AI) (P)
 DAYS CORA E38 (AI) (P)

SOUTH BUKALONG WALKER 6 (AI) (P)
 SOUTH BUKALONG WALLACE 2 (P)
 SOUTH BUKALONG VICTORIA 152 (P)

SIRE - DAYS GALLIPOLI L142 (PP)

DAM - DUNOON UNA H510 (AI) (P)

DAYS CALIBRE G74 (PP)
 DAYS FANCY J76 (AI) (P)
 DAYS FANCY F38 (AI) (P)

ALLEDALE NATIONAL W168 (PP)
 DUNOON UNA D532 (AI) (P)
 DUNOON UNA Y160 (H)

DECEMBER 2019 GROUP BREEDPLAN EBVS							
CE DIR	CE DTRS	GL	BWT	200W	400W	600W	MCW
+7.6	+5.5	-2.9	+3.4	+32	+50	+74	+55
46%	35%	64%	72%	64%	63%	63%	57%
MILK	SS	CWT	EMA	RIB	RUMP	RBV%	IMF%
+13	+2.2	+54	+5.4	+1.3	+2.2	+0.9	+1.7
49%	61%	54%	46%	51%	54%	48%	52%

\$ INDEX VALUE	
SSR	+\$168
NSR	+\$165
SBM	+\$179
NBT	+\$130

Correct, good hind quartered natural son of successful donor Dunoon Una H510.

PURCHASER:..... \$.....

Lot 90 - DAYS P235 (P)

P235

BIRTH DATE - 28/06/2018

POLL STATUS - POLLED

PIGMENT - 100/100

DAYS CALIBRE G74 (PP)
 DAYS ROBIN HOOD J183 (PP)
 ALLEDALE FANCY U5 (AI) (P)

MATARIKI HOLY - SMOKE (IMP NZL) (P)
 WIRRUNA JUSTIN J13 (AI) (PP)
 WIRRUNA DOREEN G393 (P)

SIRE - DAYS HOMESTEAD M033 (AI) (P)

DAM - DAYS DAWN M030 (AI) (P)

WIRRUNA GEELONG G171 (AI) (PP)
 DAYS MISS REGAL K35 (AI) (P)
 DAYS MISS REGAL G54 (P)

DAYS CALIBRE G74 (PP)
 DAYS DAWN K16 (AI) (ET) (P)
 ALLEDALE DAWN Z21 (AI) (P)

DECEMBER 2019 GROUP BREEDPLAN EBVS							
CE DIR	CE DTRS	GL	BWT	200W	400W	600W	MCW
+5.9	+7.0	-3.3	+3.6	+37	+50	+66	+55
40%	32%	56%	70%	66%	66%	69%	61%
MILK	SS	CWT	EMA	RIB	RUMP	RBV%	IMF%
+16	+3.4	+49	+4.8	+1.0	+1.7	+0.7	+0.7
43%	76%	56%	48%	52%	56%	50%	50%

\$ INDEX VALUE	
SSR	+\$141
NSR	+\$137
SBM	+\$148
NBT	+\$106

Quality, correct well muscled bull suitable for heifers.

PURCHASER:..... \$.....

EBV in **Top 10%**

EBV in **Top 20%**



MGA Insurance Brokers Pty Ltd

ABN 29 008 096 277 AFS LICENCE NO. 244601

61 Commercial Street East, Mount Gambier SA 5290

Phone: 8726 5300 Fax: 8726 5305

WHY NOT TRY OUR MILLENNIUM FARM INSURANCE

- FEATURING:**
- *Full accidental damage cover*
 - *Broader cover on unspecified farm buildings contents and farm machinery*
 - *Increased theft cover*
 - *Plus many more additional benefits*

CONTACT

JONATHAN BRUHN
FOR AN INDEPENDENT QUOTE

-
- **Rural** • **Corporate** • **Commercial** •
 - **Superannuation** • **Life** •
-

MGA are proud to have been associated with The Day Family for over 40 years and wish them continuing success

Buyer's Instruction Slip

This slip must be completed by purchaser and handed to the Auctioneers prior to leaving the Sale.

Please supply trading name and full address

NAME

ADDRESS

.....

..... POSTCODE

PHONE EMAIL

CONSIGN TO

.....

.....

INSURE FOR

AGENT

DATE BUYER'S SIGNATURE

LOTS PURCHASED	PRICE

Please tick box if transfer required

Herefords Australia Limited
Membership No.

.....

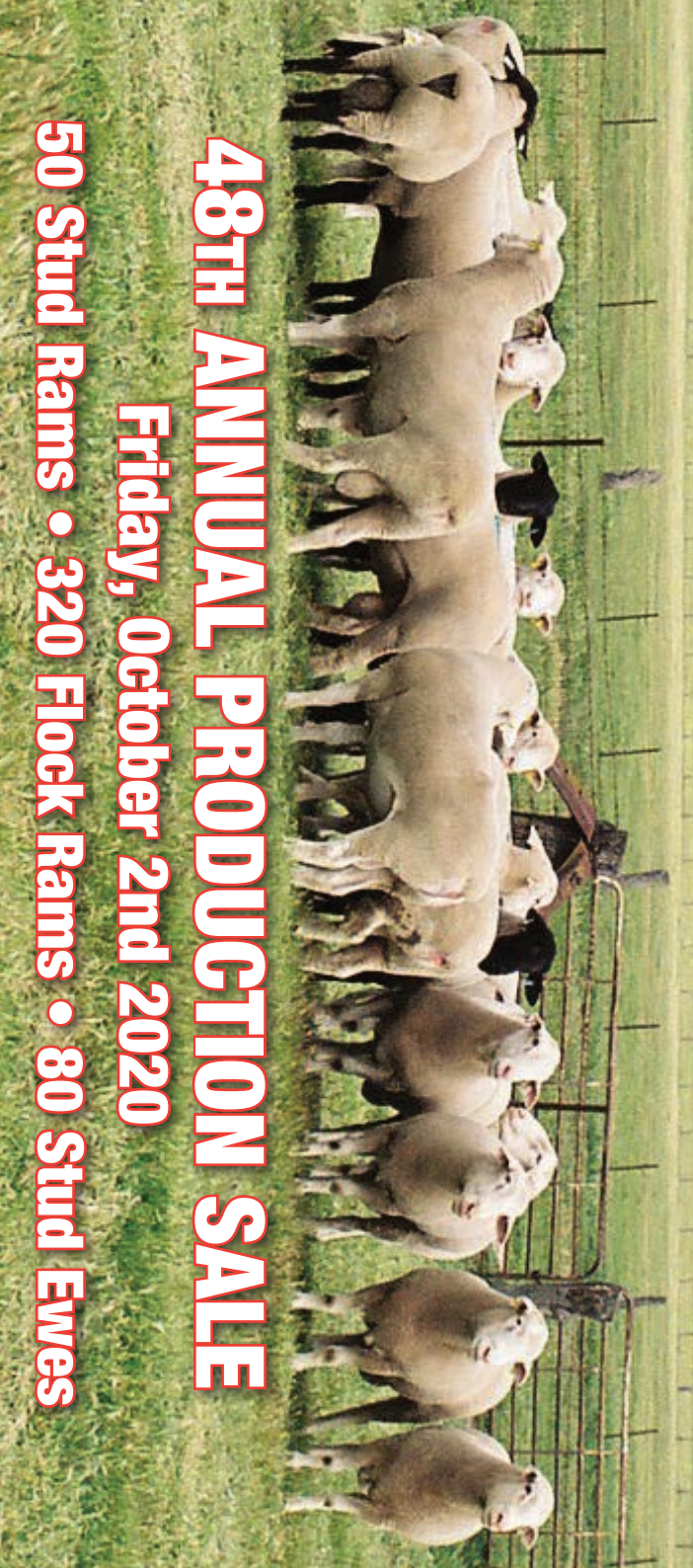
NO VERBAL INSTRUCTIONS WILL BE ACCEPTED



Gerber Anodyne 001A



Allendale Chisel L3



48TH ANNUAL PRODUCTION SALE

Friday, October 2nd 2020

50 Stud Rams • 320 Flock Rams • 80 Stud Ewes



ALLENDALE
POLL HEREFORD - SUFFOLK - POLL DORSET - WHITE SUFFOLK

"RED MEAT SPECIALISTS"

DAYS
WHITEFACE
Poll Herefords | White Suffolks
Maternal Composites



INDUSTRY LEADING WHITEFACE GENETICS



POLL DORSET - SUFFOLK - WHITE SUFFOLK - MATERNAL COMPOSITES

Agents: Landmark, Elders, Spence Dix & Co • 4% rebate to outside agents