



Poll Herefords | White Suffolks  
Maternal Composites

**Industry Leading Whiteface Genetics**



**Annual On-Property Sale**  
**Friday 1st October 2021**

Lachy Day: 0428 621 630

[www.dayswhiteface.com.au](http://www.dayswhiteface.com.au)



Poll Herefords | White Suffolks  
Maternal Composites

## Increased Genetic Gain

Our 2021 offering in both the White Suffolks and Maternal Composites once again has a significant year on year increase in genetic gain. The strong demand last year particularly for our White Suffolks means we will have a higher number on offer.

We were all hoping the world would be back to normal for our 2021 sale. There's still a good chance borders will be open, and our sale can be conducted in a normal manner. We will be using Auctions Plus again this year and will also video our stud rams which will help anyone that cannot attend in person.

You should all receive a catalogue but please contact us if you do not. The catalogue, along with stud ram videos and group flock ram videos will be available on our website.

As always and more importantly than ever please contact us with any questions. We are more than happy for private inspections prior to the sale.

## Annual on property sale Friday 1st October



**Give Lachy a call on 0428521630**

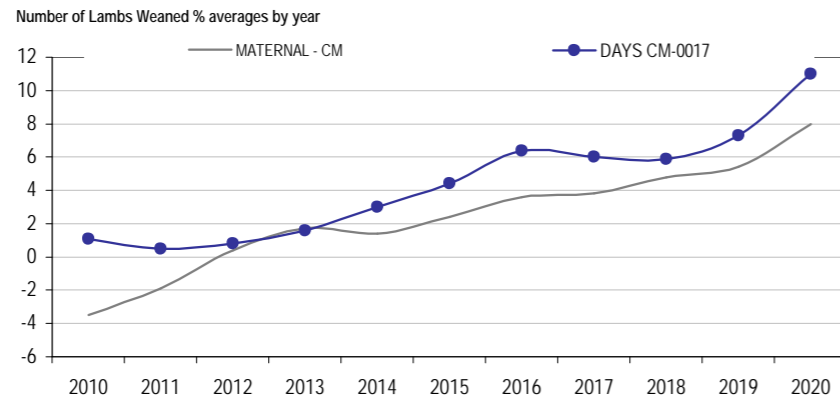
# Why Choose Days Maternal Composites?



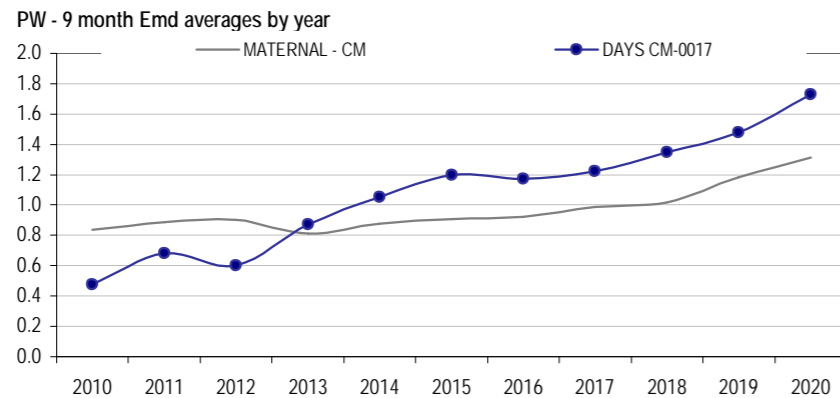
MN3

Focus in our Composites has been on fertility, muscle and fat. This shows in our ASBV graphs where we are above breed average in all these important traits.

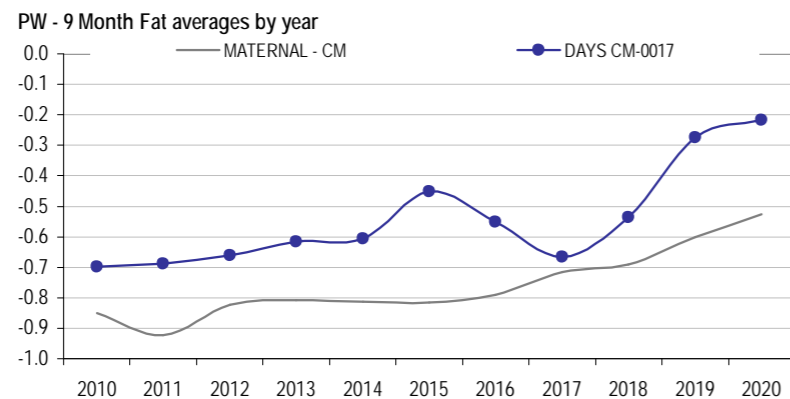
## Fertility - More Lambs Weaned



## Carry Extra Muscle - Gives the yield processors want



## Carry Extra fat - Helps with fertility, resilience and lamb survival



Our Maternal offering is headlined by the impressive CH 170188 who is the top 1% for NLW, PEMD, top 5% for fat and has an extraordinarily high maternal carcass production plus index. Also, for top 20% growth he has a low mature weight which is important in maintaining a moderate sized ewe flock.

Another AI Sire L174993 has come up exceptionally well for eating quality being in the top 5% for both IMF and Shear Force. Home bred sire 19M027 who will be strongly represented in the sale is in the top 1% for muscle and top 5% on the MCP+ index.



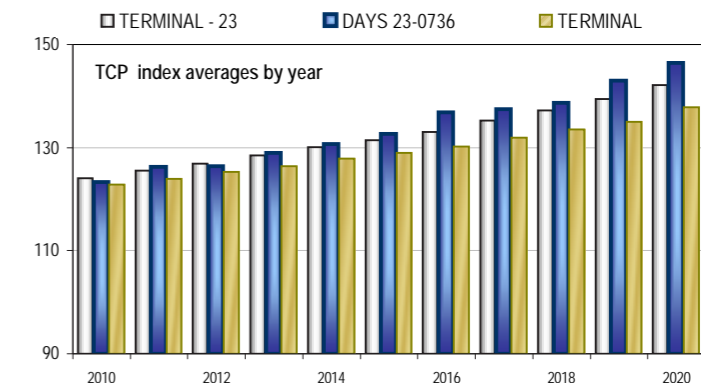
MN3

# White Suffolks

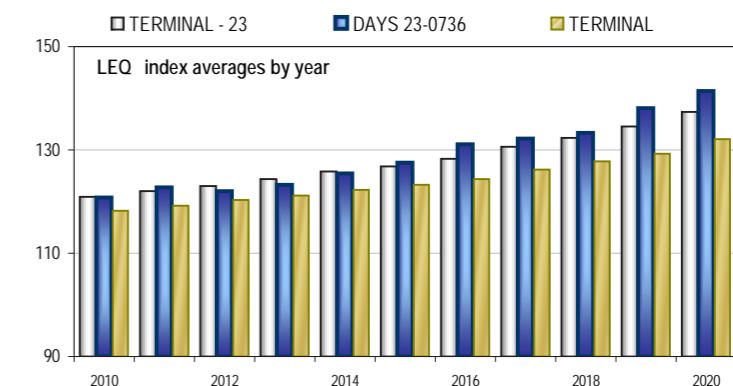


The White Suffolk offering has a number of high performing new sires represented. The two rams purchased in 2019, Waratah 180007 and Wakeleigh 180241 have both worked well with our ewes. The Waratah ram who is in the top 5% of terminal sires for post weaning weight, top 10% for muscle, and top 2% on the TCP index, has bred particularly well and will have a number of sons in our stud ram offering. Wakeleigh 180241 who is in the top 10% of terminal sires for the TCP index has left a structurally correct group of rams.

Performance of a range of home bred sires is also impressive. Days 190108 sold to Baringa and Seriston last year has left some great progeny and his balanced figures see him in the top 5% for both TCP and EQ Indexes. Other homebred sires 180081, 180083 and 180294 are all at least in the top 10% for both post weaning weight and the TCP index. Days White Suffolks perform well on both major indexes



The TCP index focuses on increasing weight and muscle with modest improvements in eating quality



With the LEQ Index Growth and carcass traits improve at a slower rate that with the TCP index but improved eating quality and a reduction in internal parasites have an increased emphasis

